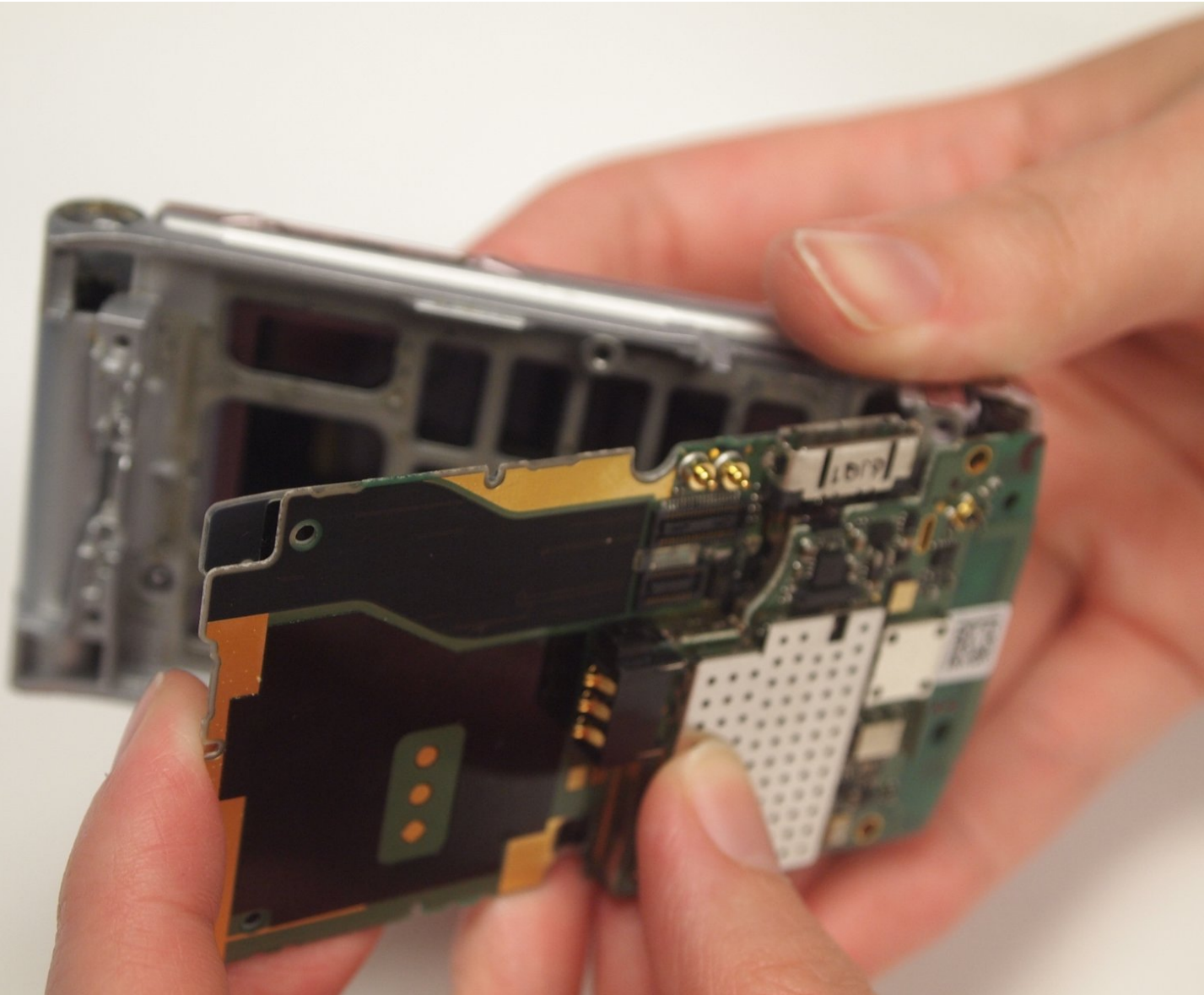




Sanyo Katana Motherboard Replacement

This guide will instruct on how remove the back casing and motherboard from the device.

Written By: StephenYH



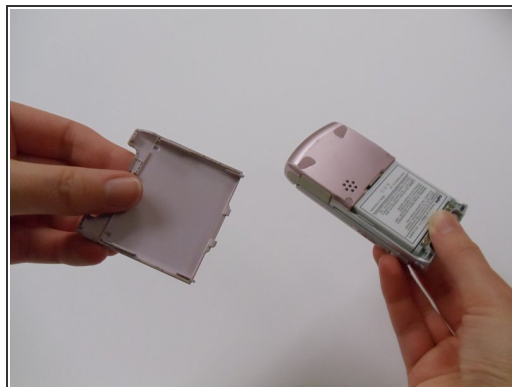
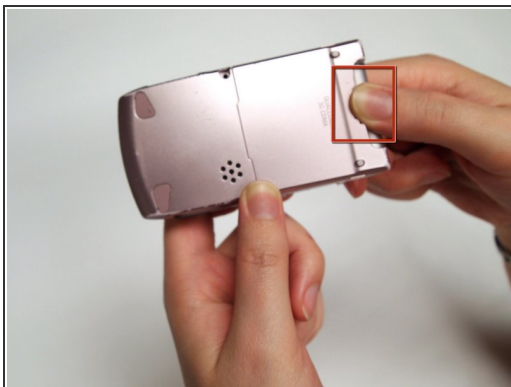
INTRODUCTION

The motherboard is the core component of the device, and removing it will not be an easy task. The keypad is attached to the motherboard and will remain attached at the end of this guide.

TOOLS:

- [Spudger](#) (1)
 - [Tri-point Y0 Screwdriver](#) (1)
-

Step 1 — Battery



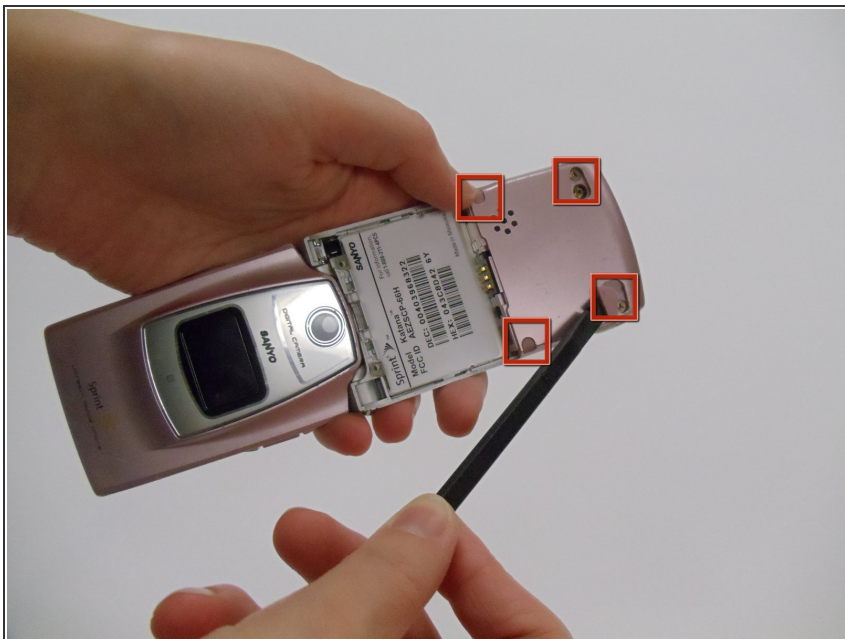
- Place thumb on the tab located at the back of the phone and slide button towards your hand and away from phone.
- While holding down the button, pull cover off with other hand.

Step 2



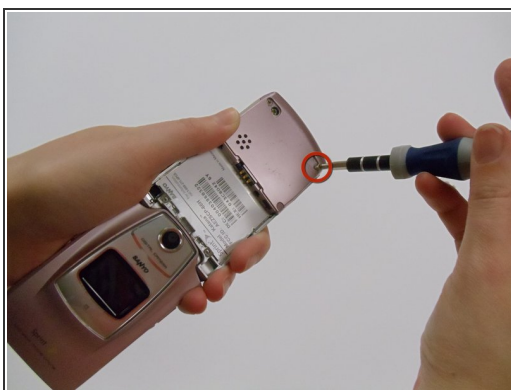
- Use fingers to grip the battery and remove it from the phone.

Step 3 — Back Casing



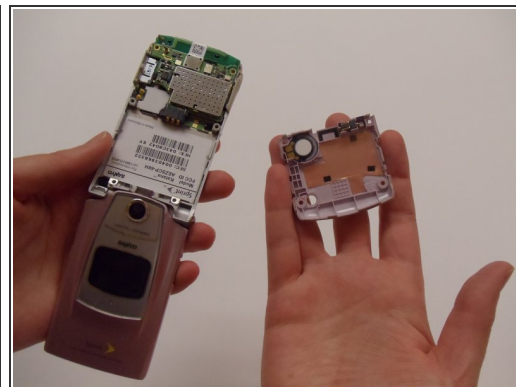
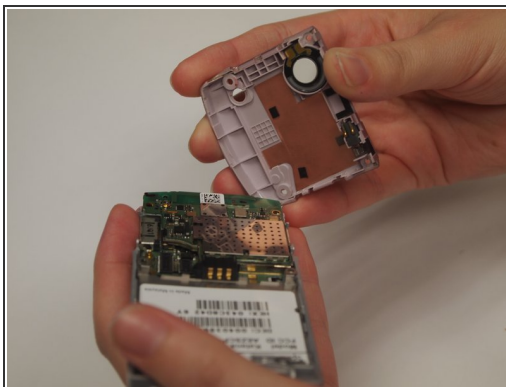
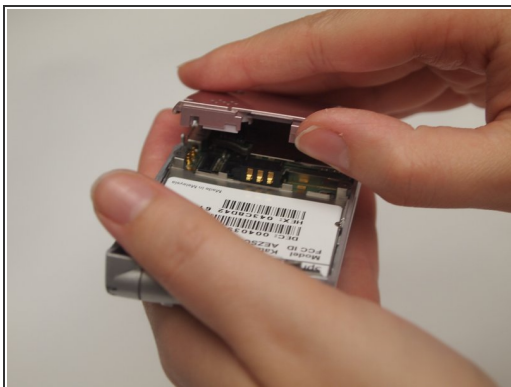
- Using a spudger, remove the four rubber coverings on the lower back plate.

Step 4



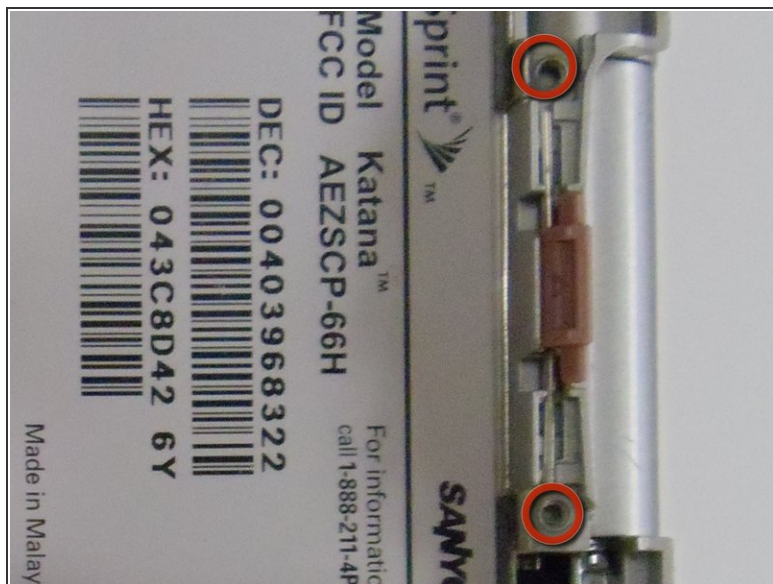
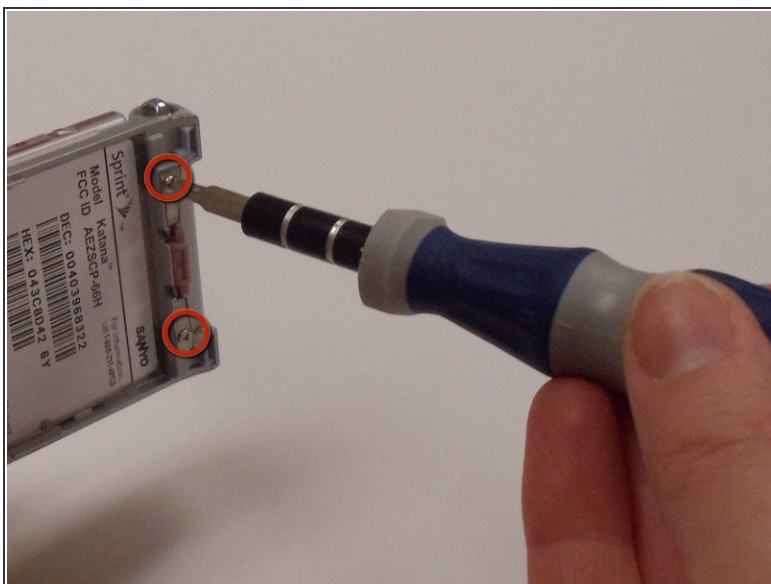
- Using a Tri-wing Y0 screwdriver, remove the four 4.4mm screws securing the back plate.

Step 5



- Remove the lower back cover to reveal part of the motherboard and the circular speaker housed in the back cover plate.



Step 6 — Motherboard



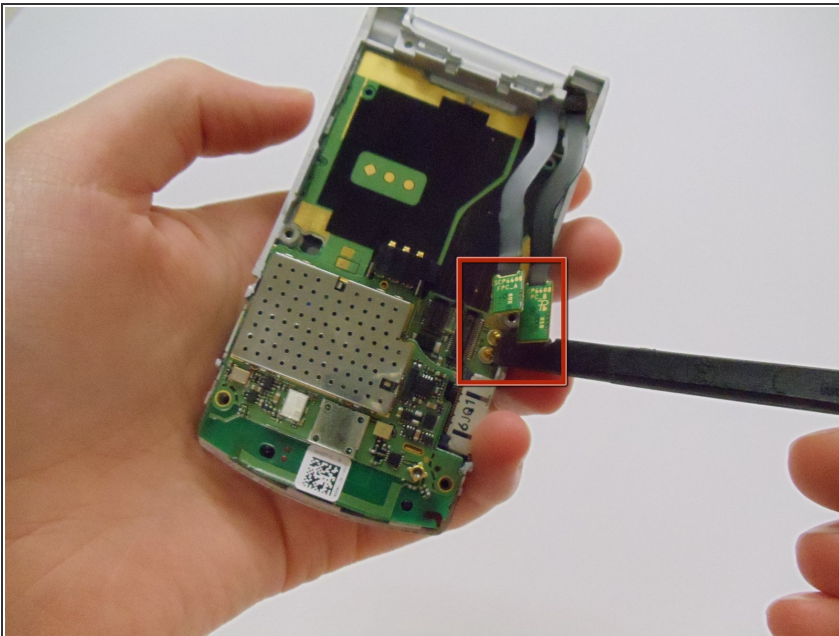
- Unscrew the 4.4mm screws at the top of the phone with the Tri-wing Y0 Screwdriver.

Step 7



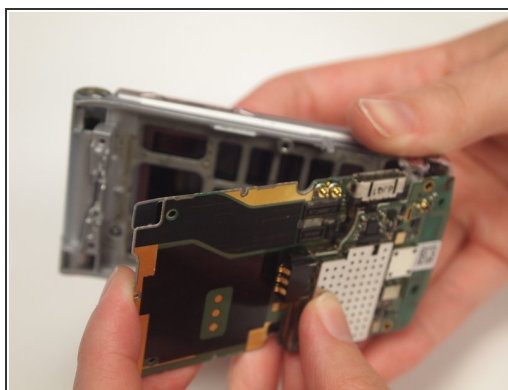
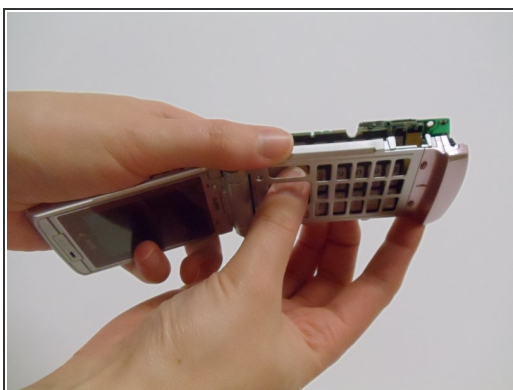
-  For the following steps, the phone is shown closed to make manipulating the parts easier.
- Using a spudger, remove the thin aluminum plate to access the upper motherboard.
 -  This will most likely be difficult to pry off and will take a considerable amount of force. Stay clear of the piece to avoid injury when it comes free of the device.

Step 8



- Use the flat end of the spudger to remove two ribbon cables from the back of the motherboard.

Step 9



- Open the phone and firmly hold the phone casing with one hand and push the motherboard out of the case with the other by pushing on the keys.
- Once the keys are free from the casing, close the phone and pull the motherboard from the back of the phone the remainder of the way with your fingers.

To reassemble your device, follow these instructions in reverse order.