



Lenovo Yoga C930-13IKB Motherboard Replacement

Written By: Josiah Grayson Sawyer



TOOLS:

T5 Torx Screwdriver (1)
iFixit Opening Tool (1)
Phillips #00 Screwdriver (1)
Phillips #0 Screwdriver (1)
Halberd Spudger (1)
Nylon-Tipped Reverse Tweezers (1)

PARTS:

Thermal Paste (1)
5B20S72100 - Lenovo Yoga C930-13IKB Laptop Motherboard with Intel Core i5-8250U, UMA Graphics, 12GB RAM (1)
5B20S72103 - Lenovo Yoga C930-13IKB Laptop Motherboard with Intel Core i7-8550U, UMA Graphics, 12GB RAM (1)
5B20S72098 - Lenovo Yoga C930-13IKB Laptop Motherboard with Intel Core i5-8250U, UMA Graphics, 16GB RAM (1)
5B20S72099 - Lenovo Yoga C930-13IKB Laptop Motherboard with Intel Core i5-8250U, UMA Graphics, 8GB RAM (1)
5B20S72101 - Lenovo Yoga C930-13IKB Laptop Motherboard with Intel Core i7-8550U, UMA Graphics, 16GB RAM (1)
5B20S72102 - Lenovo Yoga C930-13IKB Laptop Motherboard with Intel Core i7-8550U, UMA Graphics, 8GB RAM (1)

Step 1 — Back Cover



- Flip the device over so that the underside is facing up.
- Remove the six 3.5 mm T5 Torx screws.

Step 2



- Pry off the back cover using the plastic opening tool.
 - Loosen the back cover in multiple spots using the opening tool, then remove the whole back.
- ① You may have to run the plastic tool along the edges until you find a small gap to separate the back cover from the laptop.

⚠ Do not use a metal tool when working with your device.

Step 3



- Carefully lift the cover off with your hands.

Step 4 — SSD



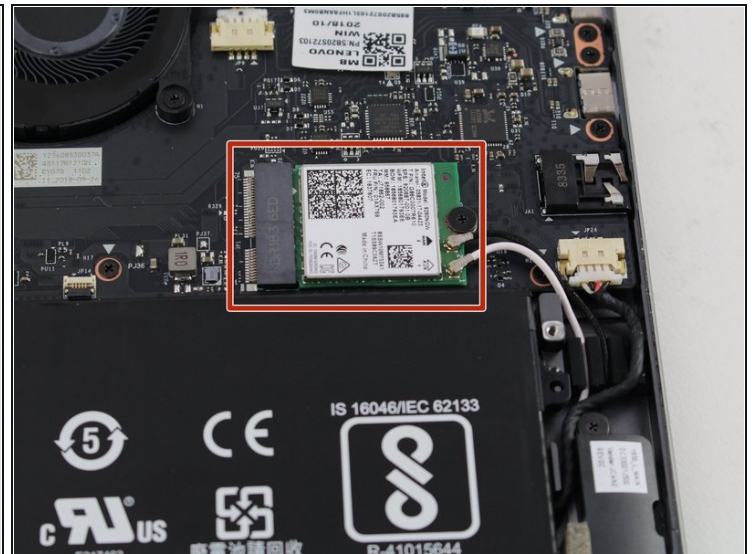
- Remove the screw (2 mm with a 5 mm head) that connect the SSD to the motherboard using a Phillips #00 screwdriver.

Step 5



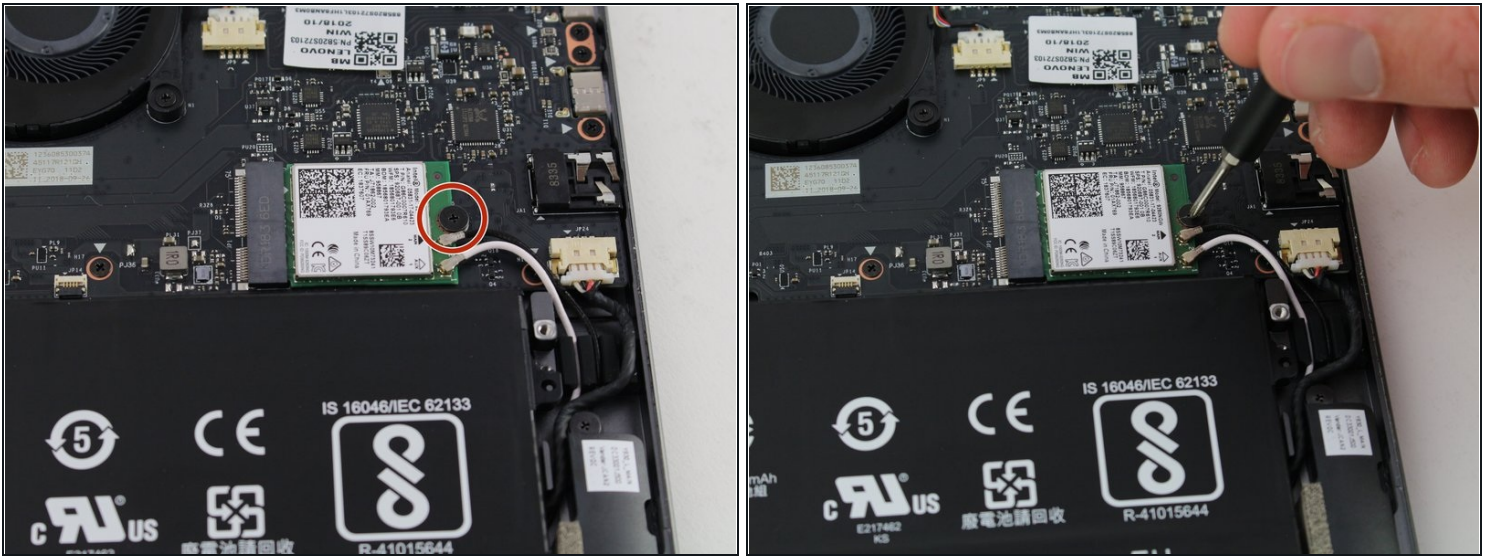
- Pinch the left side of the SSD card.
- Pull gently to the left, horizontal to the laptop.

Step 6 — Wi-Fi Card



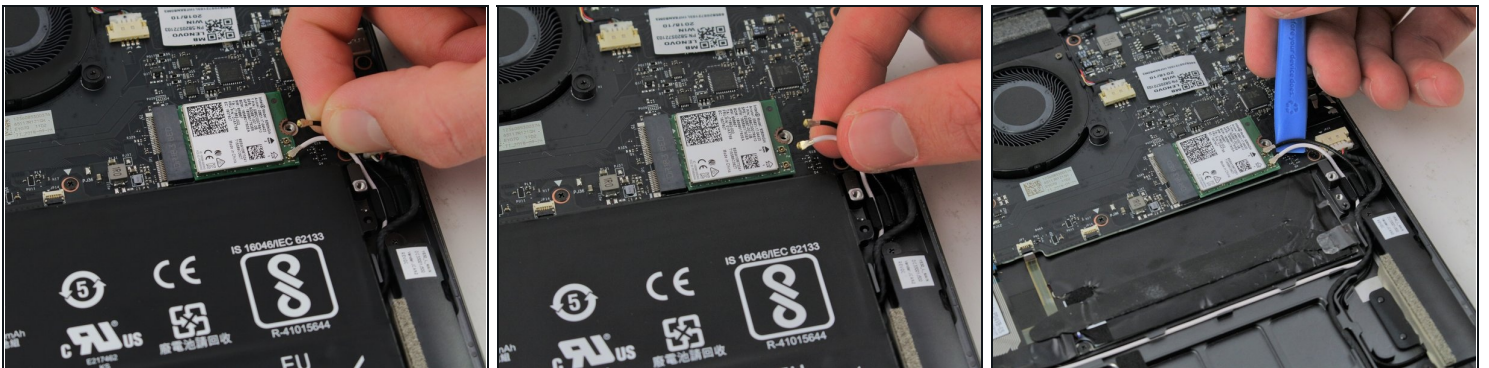
- Find the Wi-Fi card located on the right just above the battery. It is a green chip with a white label that says "Intel 9260" somewhere on it.

Step 7



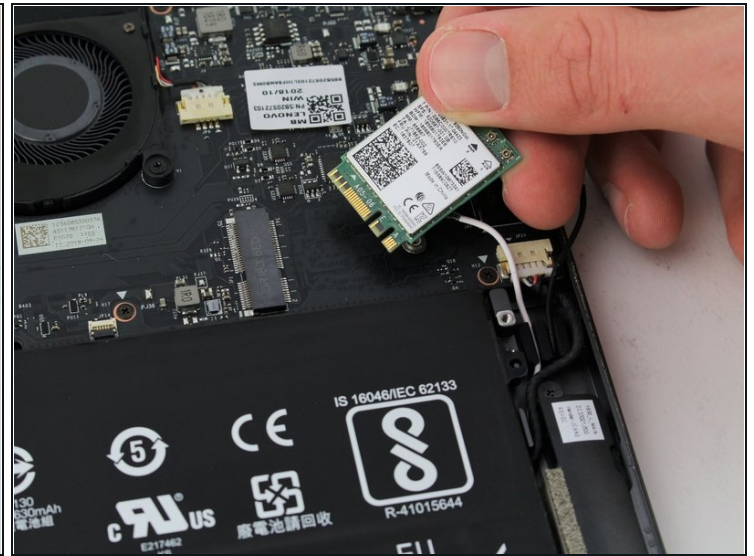
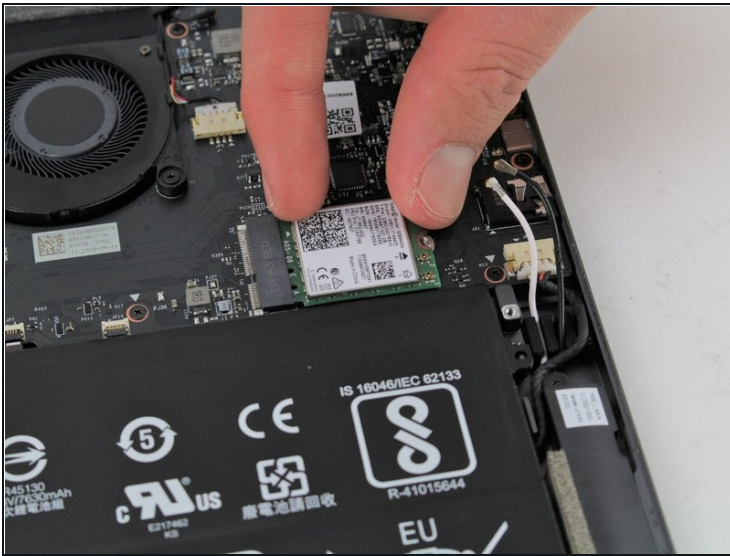
- Use a Phillips #00 screwdriver to remove the single 2 mm screw that attaches the card to the motherboard.

Step 8



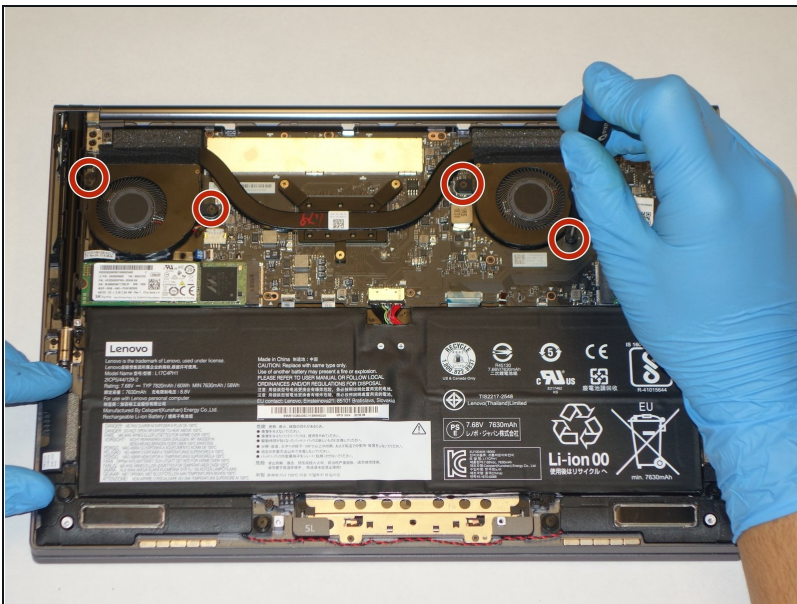
- Gently pull or use the [iFixit opening tool](#) to detach the black and white wires from the card.
- ☑ When reassembling, these wires are difficult to reattach, so be patient. Line the wires up with your fingers and press down on the connections with the opening tool.

Step 9



- Pinch the card on either side and pull to the right to unplug it from the motherboard.

Step 10 — Coolant Fans



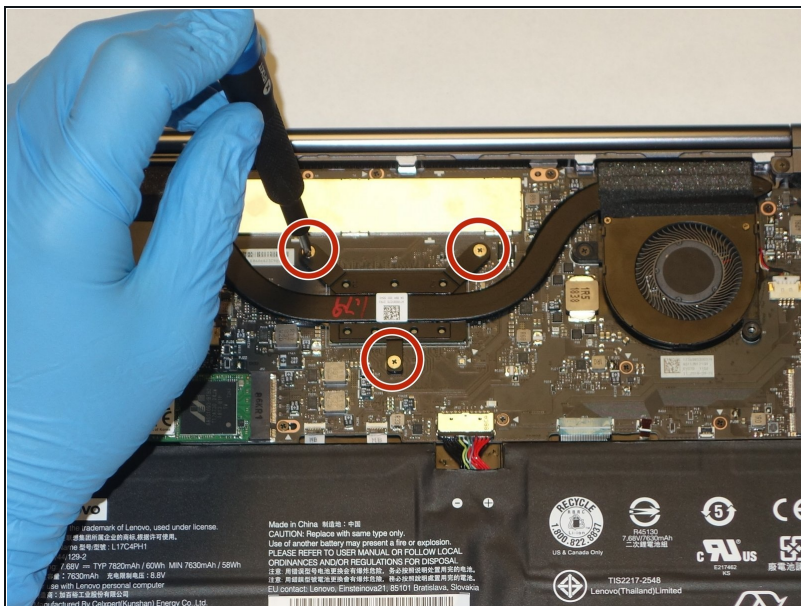
- Remove the four 3 mm Phillips #0 screws from the fan assembly.

Step 11



- Remove the four 2 mm Phillips #00 screws from the fans themselves.

Step 12



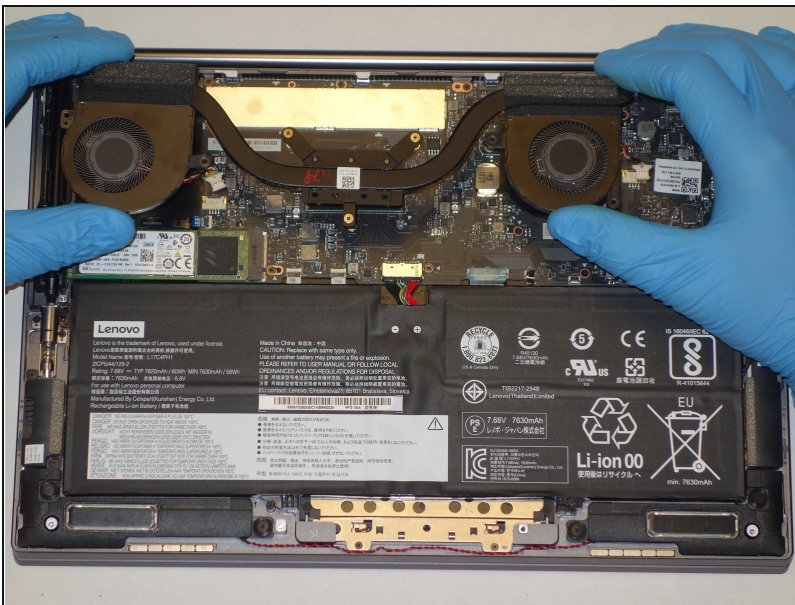
- Unscrew the three 3 mm Phillips #0 screws on the heatsink.

Step 13



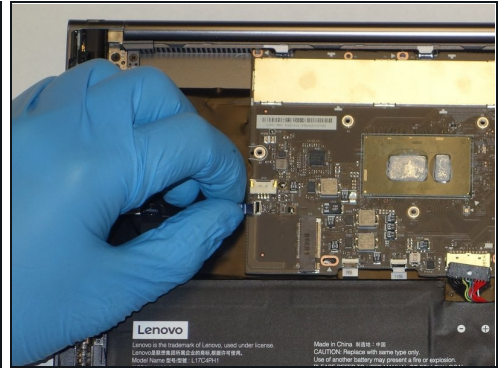
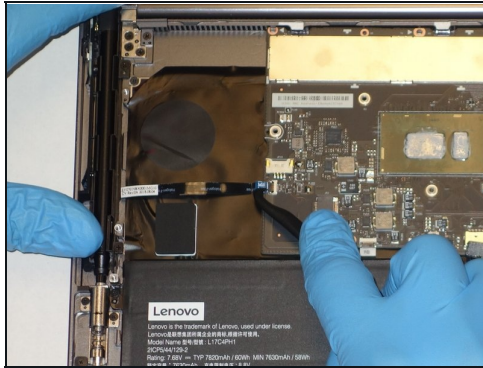
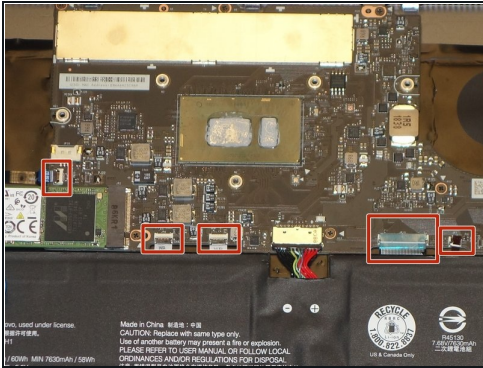
- Use a plastic opening tool to remove the two small, white power cable connectors for each of the two fans.

Step 14



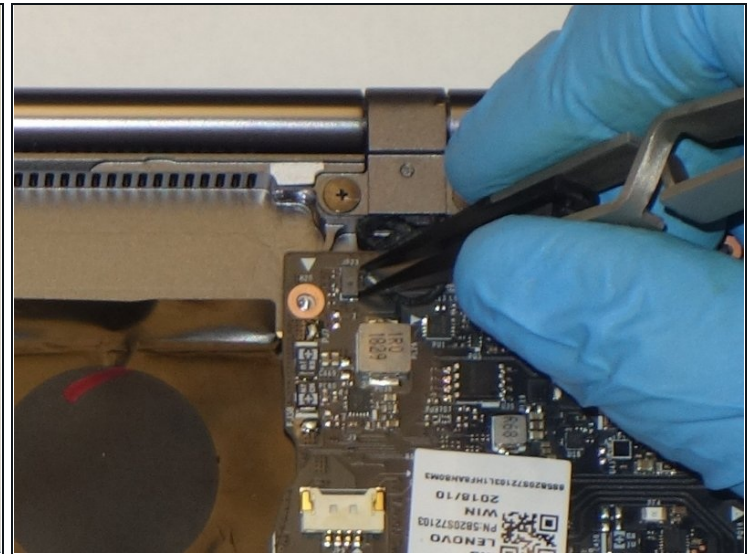
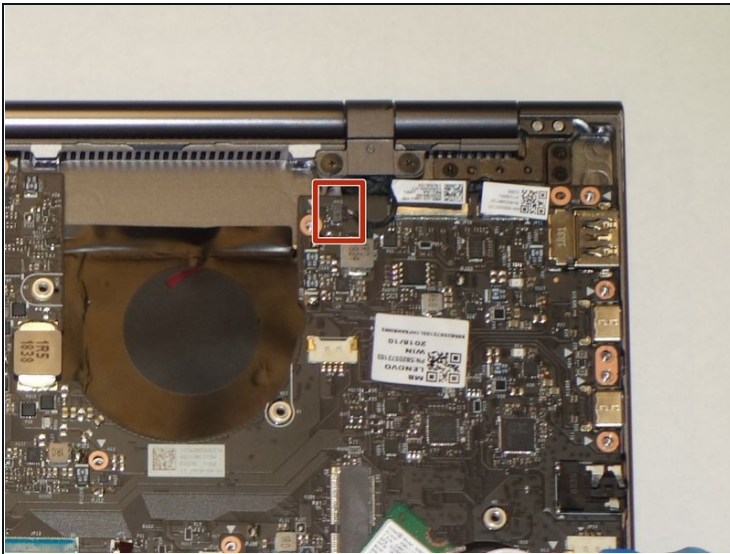
- Gently lift the fan assembly out of the laptop.
- ☑ Be sure to clean and reapply thermal paste to the heatsink during reassembly.

Step 15 — Motherboard



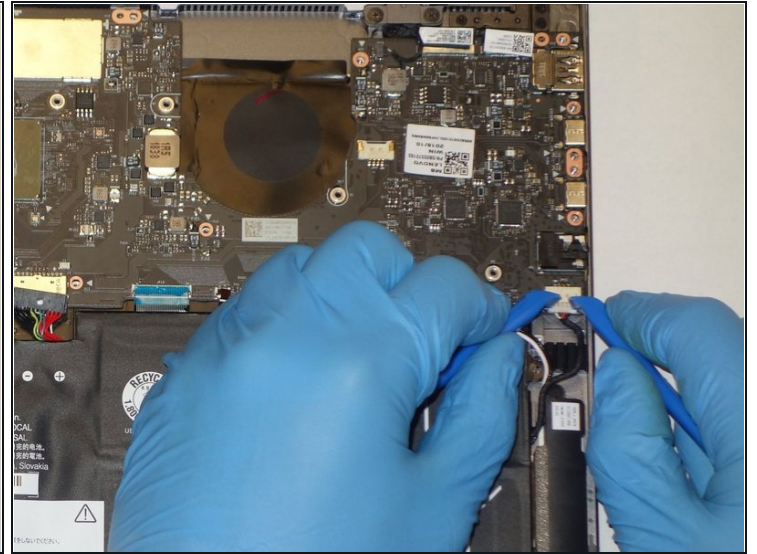
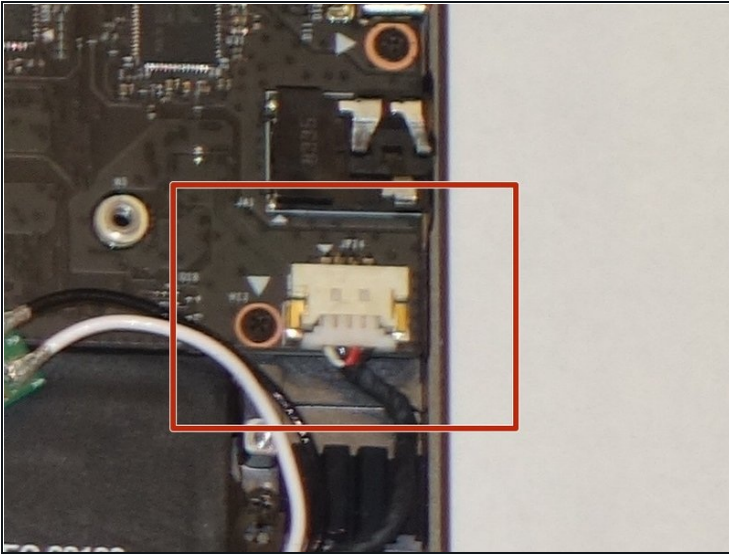
- Using the Halberd Spudger, gently lift the black tab on top of each of the five ZIF connectors for the ribbon cables. Then pull the cables out from the connectors.

Step 16



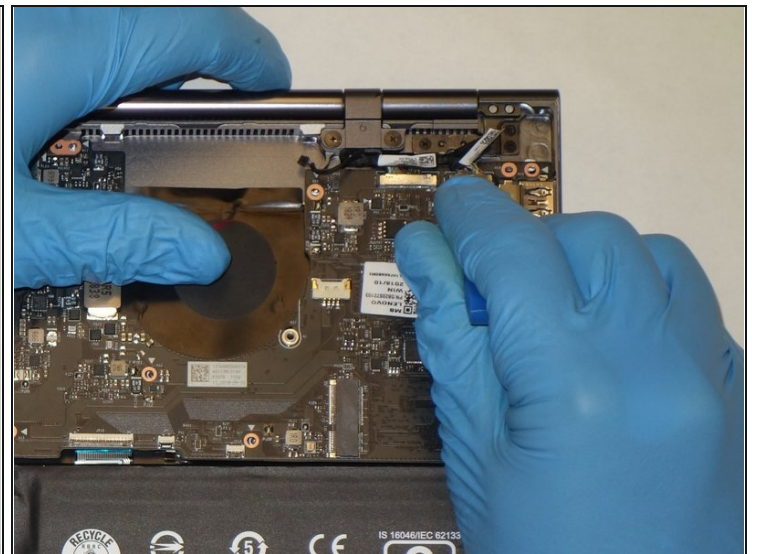
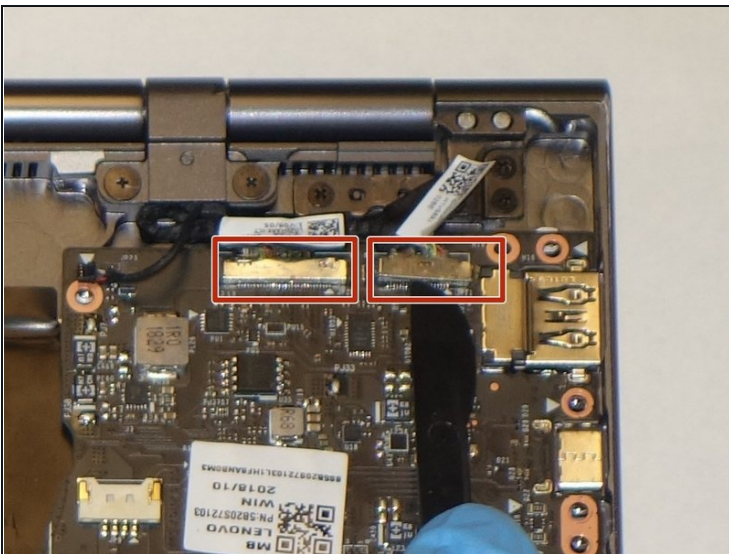
- Using the reverse tweezers, gently pull out the small black cable towards the top right of the motherboard.

Step 17



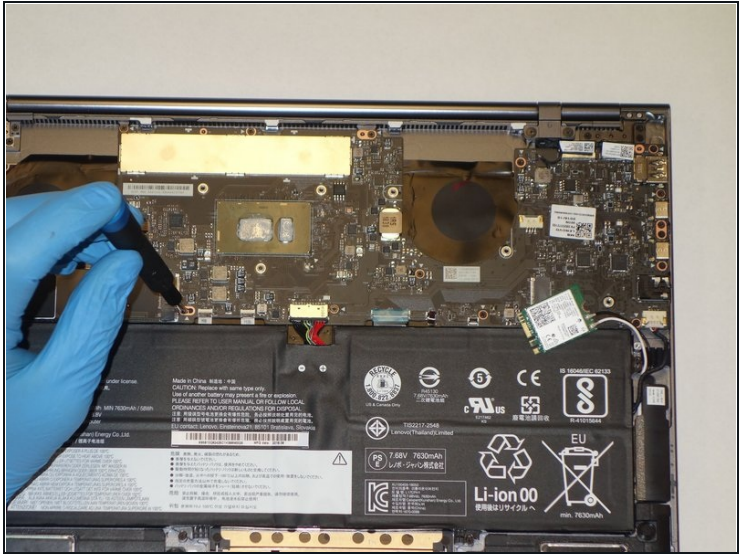
- Using two plastic opening tools gently unplug the white speaker cable connector from the bottom left of the motherboard.

Step 18



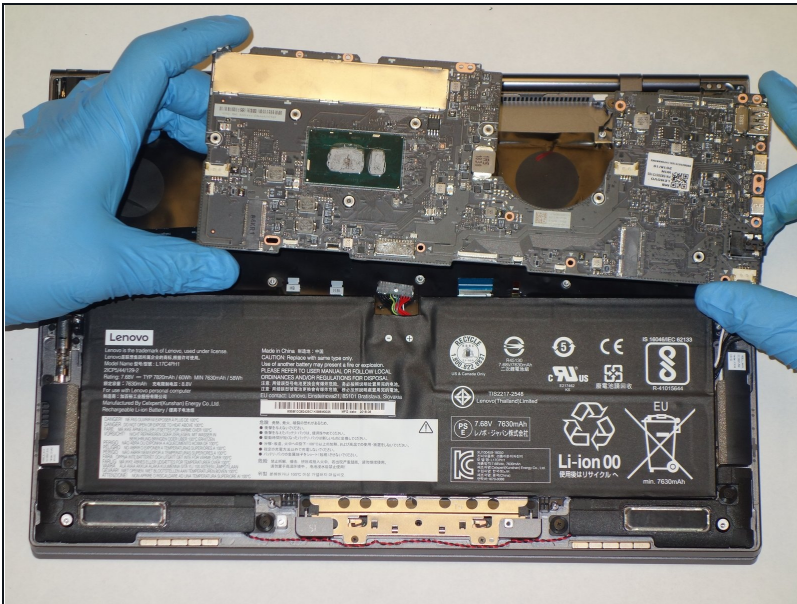
- Using the plastic opening tool, gently pry up on the metal tabs of the two display cables to remove the cables from the top right corner of the motherboard.

Step 19



- Remove the fourteen 3 mm Phillips #00 screws that hold in the motherboard.

Step 20



- While gently grasping each side of the motherboard, carefully lift the assembly out.

To reassemble your device, follow these instructions in reverse order.