



Motorola Moto E6 Screen Assembly Replacement

This guide will show the user how to replace...

Written By: Ty Duben



INTRODUCTION

This guide will show the user how to replace the screen assembly in the Motorola Moto E6. It should be replaced if it is malfunctioning or broken. A cracked screen is prone to further damage and should be fixed promptly. A cracked screen can also be potentially hazardous and the user should be cautious while replacing.

Before you begin, download the [Rescue and Smart Assistant](#) app to backup your device and diagnose whether your problem is software or hardware related.

TOOLS:

[iFixit Opening Tool](#) (1)

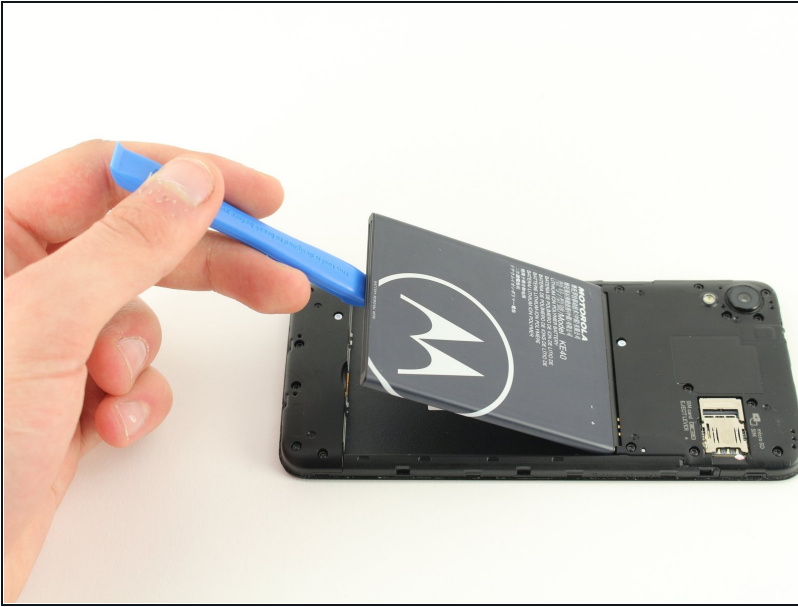
[T4 Torx Screwdriver](#) (1)

Step 1 — Back Cover



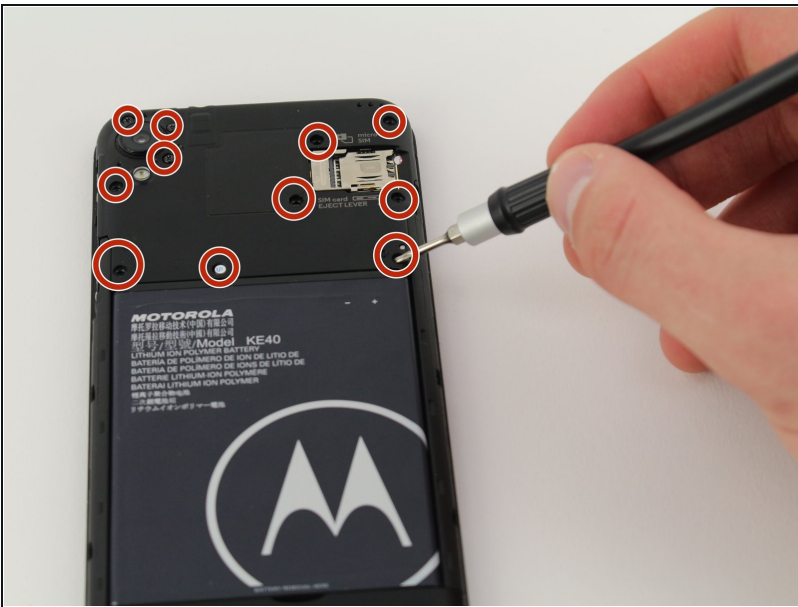
- Begin by prying open the bottom right of the device using the plastic opening tool.
- Work your way around the edge of the device, slowly prying open the casing until it pops off.

Step 2 — Battery



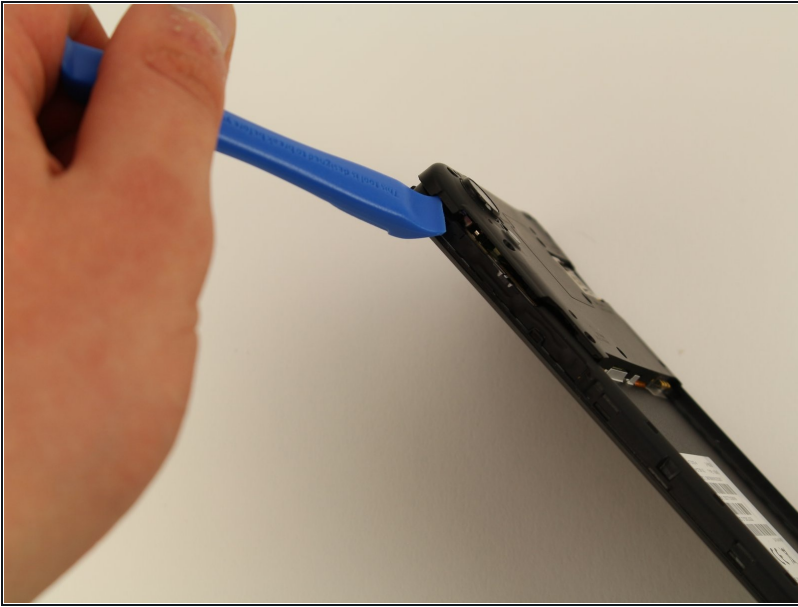
- Use the opening tool on the divot located below the battery to pop it out.

Step 3 — Motherboard



- Remove the eleven 3.8 mm T4 Torx screws located above the battery compartment.

Step 4



- Use the plastic opening tools to pry open the piece located at the top of the device.
- Start by prying open the side of the compartment and work your way towards the camera module, prying open the compartment as you go.
- Pop off the piece above the battery compartment.

Step 5



- Remove the two 1.1 mm T4 Torx screws from the bottom left and top right sides of the motherboard.

Step 6



- Remove the two press fit cables at the bottom of the motherboard with the plastic opening tool.
- Remove the coaxial cable using the plastic opening tool.
- After removing the cables, remove the motherboard from the phone by hand.

Step 7 — Charging Dock



- Remove the seven 3.8 mm T4 screws on the piece located below the battery compartment.

Step 8



- Begin prying off the bottom piece with the opening tools on the divot located at the bottom left.
- Work your way around the piece until it pops off.

Step 9



- Remove the press fit cable at the top of the charging dock with the plastic opening tool.
- Remove the coaxial cable using the plastic opening tool.

Step 10



- Remove the two 1.1 mm T4 Torx screws on the bottom right and top left sides of the charging dock.
- Remove the charging dock by hand.

Step 11 — Screen Assembly



- After removing the motherboard and the charging dock, the screen assembly can be replaced.

To reassemble your device, follow these instructions in reverse order.