



# How to Fix a Broken Toilet Paper Holder

In this guide, we will look at how to fix a broken or loose toilet paper holder by replacing the drywall anchors with newer, better ones.

Written By: Andrew Nammour



## INTRODUCTION

How annoying is it to place your toilet paper in places other than its holder? Want to solve this issue? In this guide, we will look at how to fix a broken or loose toilet paper holder by replacing the drywall anchors with newer, better ones. The process is relatively simple, although it does require hand stability to drill the wall properly.

- It is optional to put a towel under the wall being drilled. This will help prevent drywall powder to fall on the floor.
- The screwdrivers used in this project fit the screws being used. Use the screwdriver according to the screws in possession.

---

### TOOLS:

- [Cross head or Phillips screwdrivers and/or allen keys as required.](#) (1)
  - [Screwdriver](#) (1)
  - [Cordless Drill](#) (1)
  - [5/16" drill bit](#) (1)
  - [Drywall anchor \(3/8"-1/2"\)](#) (1)
-

## Step 1 — How to Fix a Broken Toilet Paper Holder



- As you can tell, the left holder is loose. Replacing the anchor is much needed.

## Step 2



- Remove the Allen screw under each holder.
- ⓘ I used a 1/6" Allen bit because that is what fit my toilet paper holder's Allen screw. Use the bit according to the screw available.
- ⓘ If the screw size is unknown, I would recommend buying a pack with several Allen bits and trying each until the right one is found.

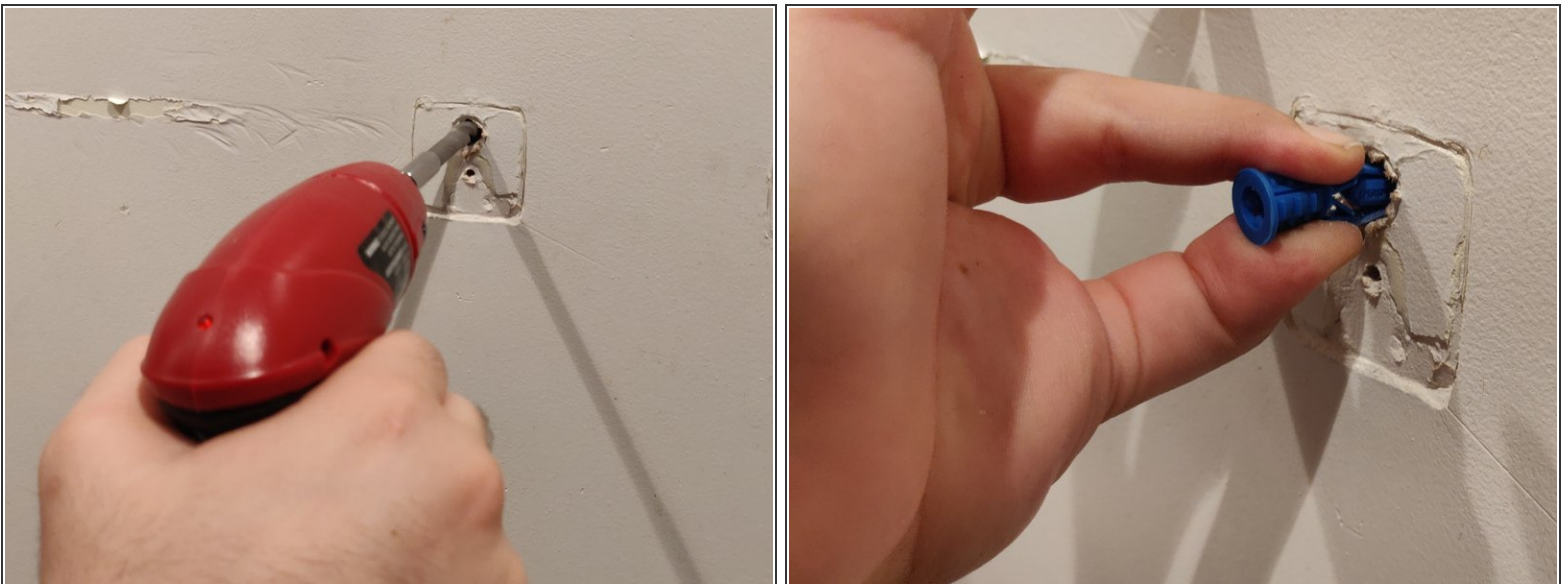


### Step 3



- After unscrewing the holder, take it off and begin unscrewing the screws in the wall. The type of screwdriver depends on the screws used.
- Remove the clip after removing all screws. You should be left with two big holes and two small holes in the wall.

### Step 4



- Remove the existing anchor and drill the top hole with the 5/16" drill bit. This will make space for the new anchor to be placed.
- Pinch the new 3/8"-1/2" anchor, place it into the top hole, and push it to be level with the wall.

## Step 5



- After placing the new anchor in, align the clip accordingly and proceed to screw in the anchor, starting with the top hole and then the bottom hole.
- ⓘ You have the option to use either a screwdriver or drill (head based on the screws in possession).

## Step 6



- When you have completed the previous step for both sides, place the toilet paper holder in place and re-screw the Allen screw until both holders feel stiff.