



Dexter 300W Corded Delta Sander - 300DS2.5

Carbon Replacement

Written By: Céline Chemineau



INTRODUCTION

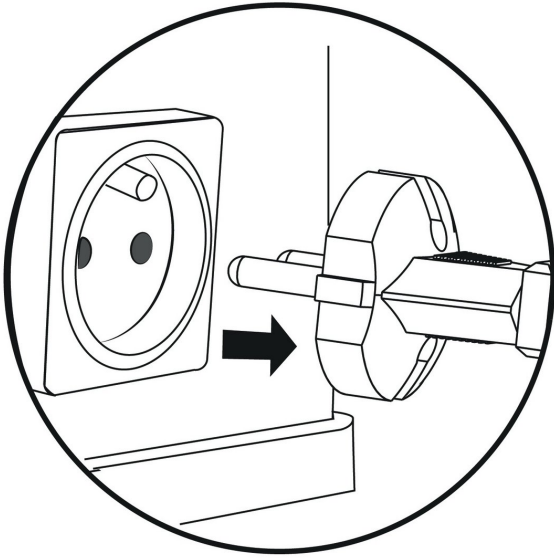
This tutorial shows you the change of only one carbon, to change the second you just have to follow the same method.




PARTS:

- [New Item](#) (1)
 - [New Item](#) (1)
 - [New Item](#) (1)
-

Step 1 — Unplug



 Before you begin, remember to disconnect the mains plug.

Step 2



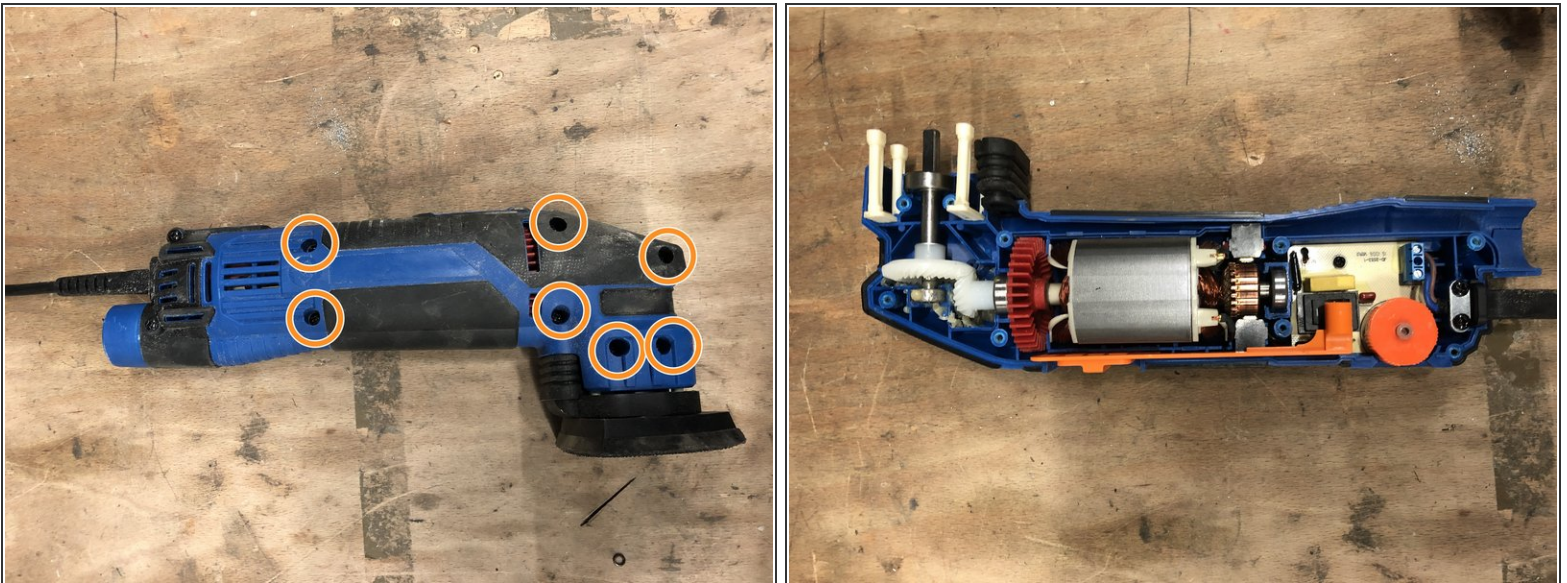
- Remove the three screws from the pad.

Step 3



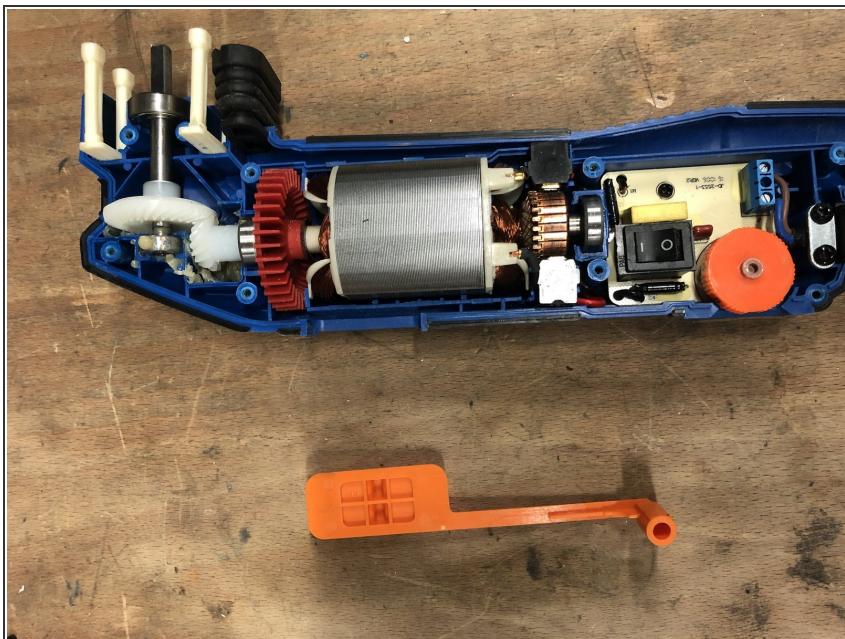
- Be careful to keep the three small marbles.

Step 4



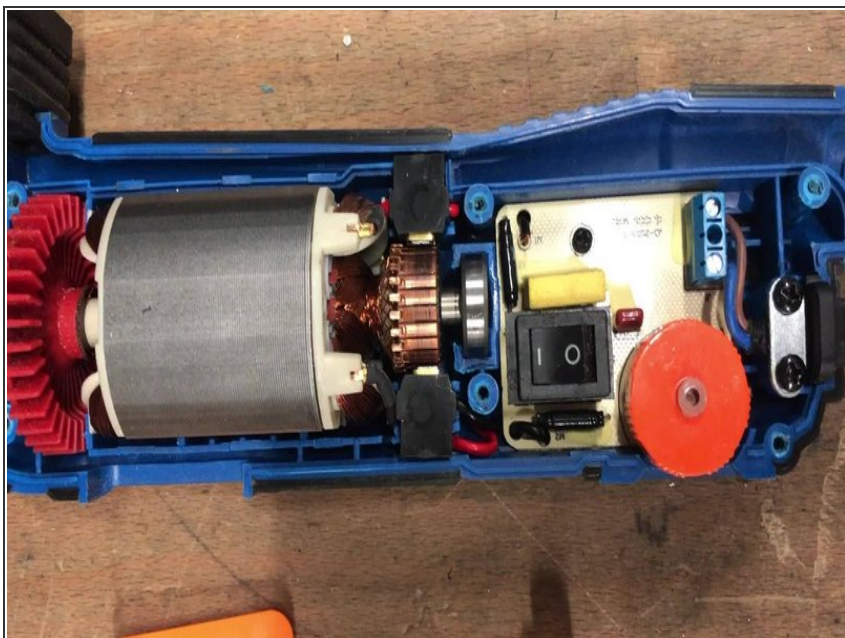
- Unscrew the screws to open the shell.

Step 5



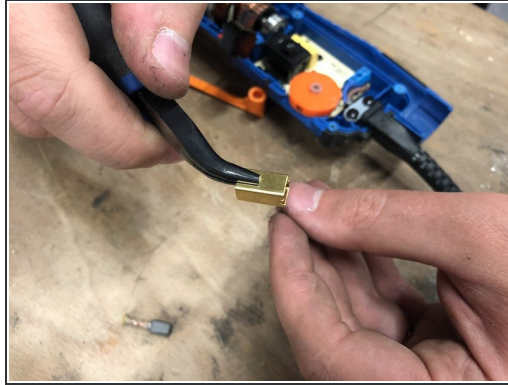
- Remove the orange cap.

Step 6



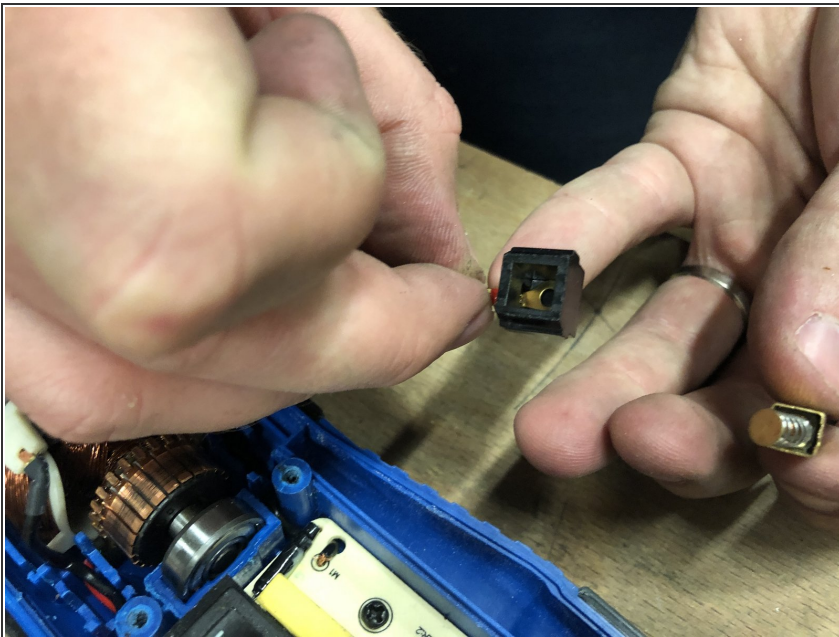
- Using a screwdriver lift the brushes.

Step 7



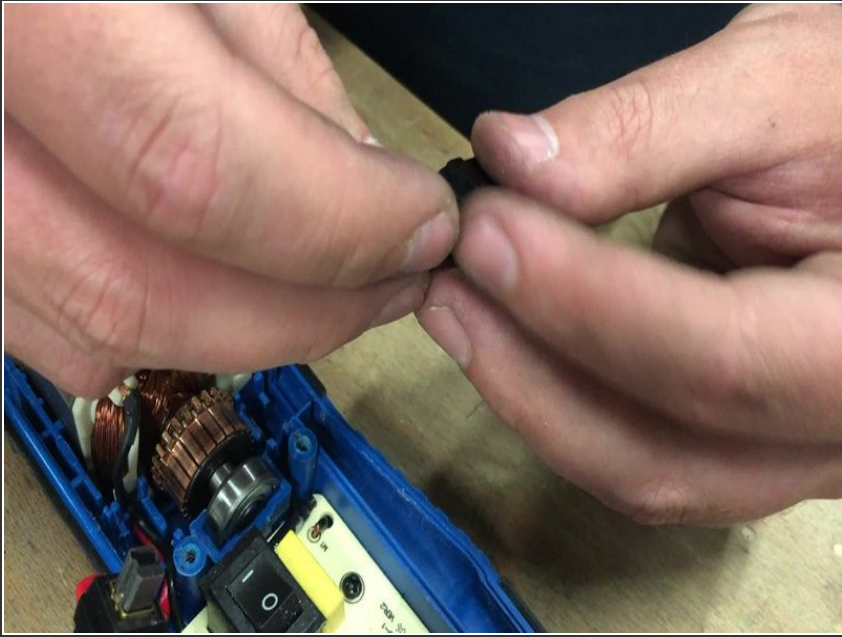
- Remove the carbon from its housing then take it out.
- Using pliers, fold down the small tab.

Step 8



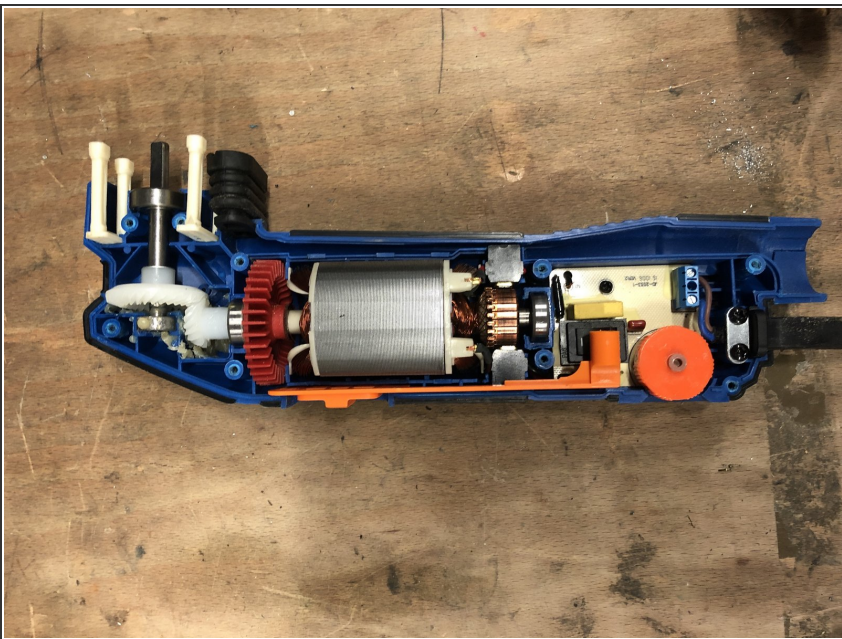
- Replace the new carbon in its carbon holder.

Step 9



- Reconnect the carbon, test if the carbon slides well inside.

Step 10



- Replace the coals in their housing.

Step 11



⚠ Before closing, check that no cable is blocked and that each part is in its place.

- Replace the screws on the hull.

Step 12



- Replace the retaining flange, be careful to have the three small balls.

Step 13



- Tighten the three screws of the retaining plate then that of the pad.

To reassemble follow guide through or in reverse