



Dexter 300W Corded Delta Sander - 300DS2.5

Toothed Wheel Replacement

Written By: Céline Chemineau



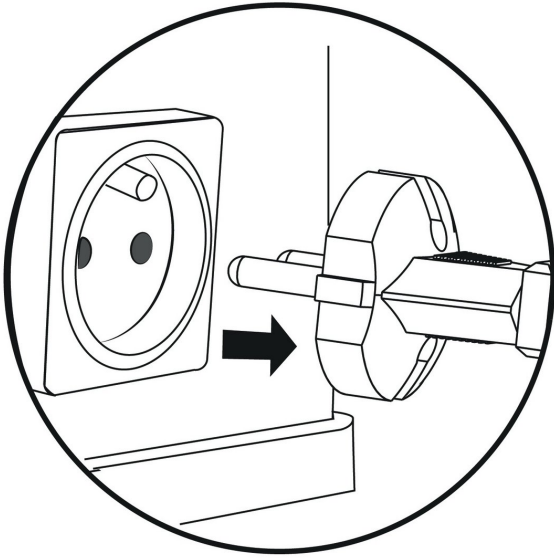
INTRODUCTION


This guide will show you how to replace the gear wheel

TOOLS:

- [New Item](#) (1)
-

Step 1 — Unplug



 Before starting, remember to disconnect the outlet from the area.

Step 2



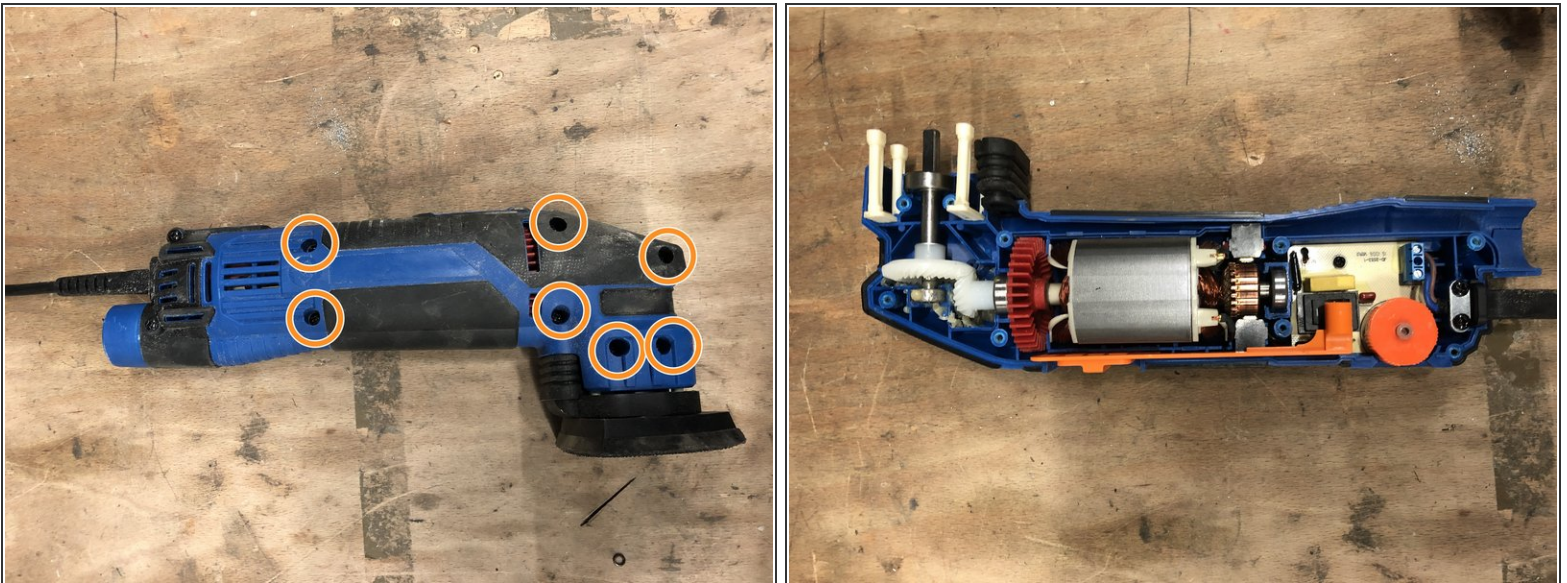
- Remove the three screws from the pad.
- Then the three screws of the holding flange.

Step 3



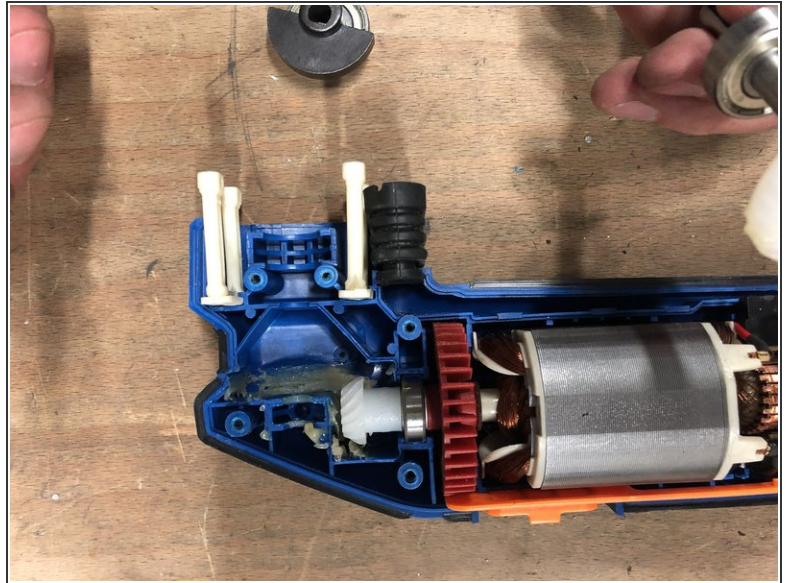
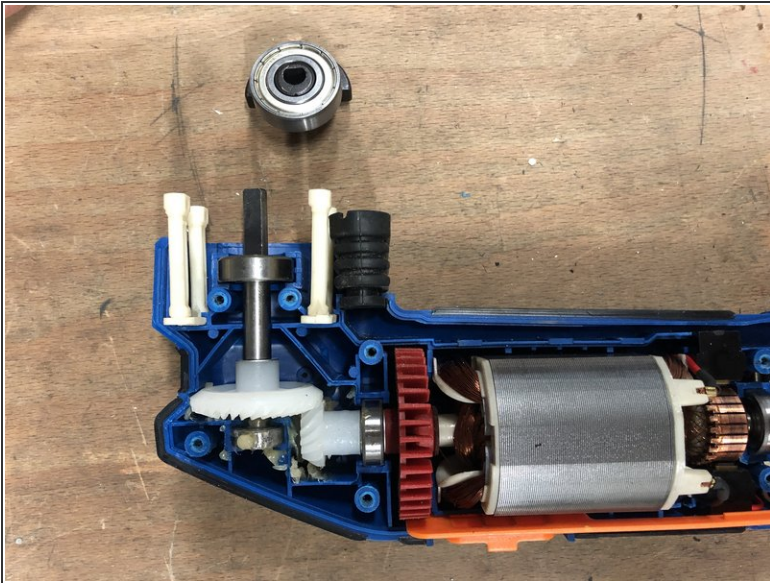
- Be careful to keep the three small balls.

Step 4



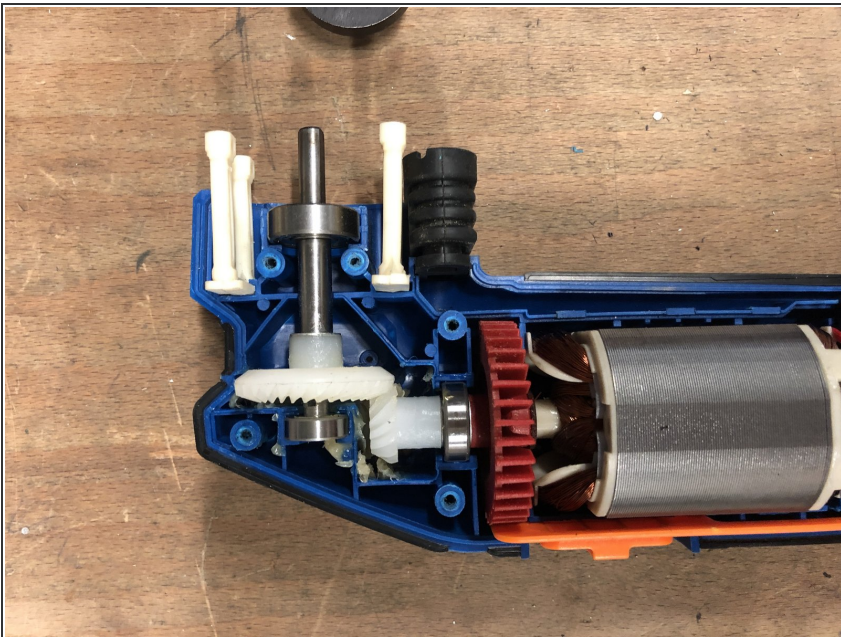
- Unscrew the screws to open the shell.

Step 5



- Remove the pendulum and recover the bearing.

Step 6



- ⓘ Remember to put back some fat before replacing the new pendulum.
- Replace the new part.

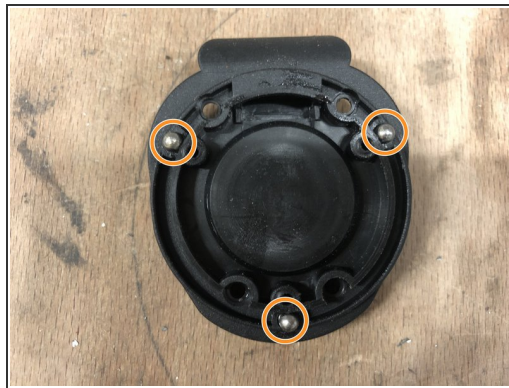
Step 7



⚠ Before closing, check that no cables are blocked and that each room is in its housing.

- Replace the screws on the shell.

Step 8



- Replace the holding flask, be careful to have the three small balls.

Step 9



- Line the three screws of the holding flange and then that of the pad.

To reassemble follow guide or in reverse