



Repair a Dexter Corded Belt Sander - 900W 2.5in width

Written By: Céline Chemineau

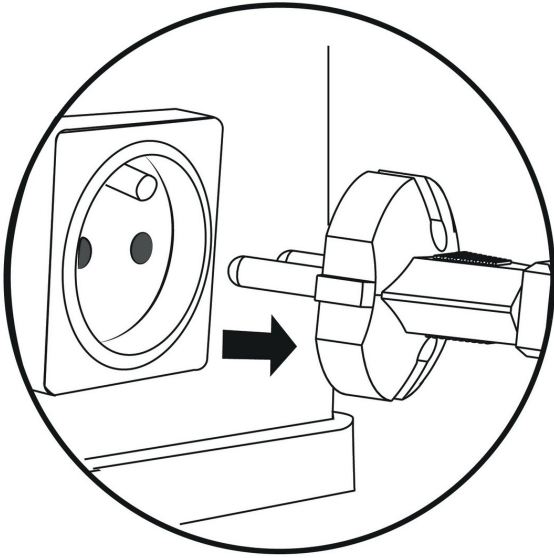





TOOLS:

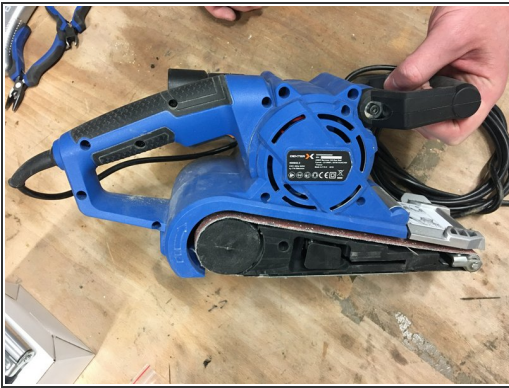
- [New Item](#) (1)
-

Step 1 — Unplug



 Before starting, remember to unplug the device.

Step 2



- Remove the handle by unscrewing the screw.

Step 3



- Pry up the sanding belt to remove it.

Step 4



- Unscrew the four screws to access the drive belt.

Step 5



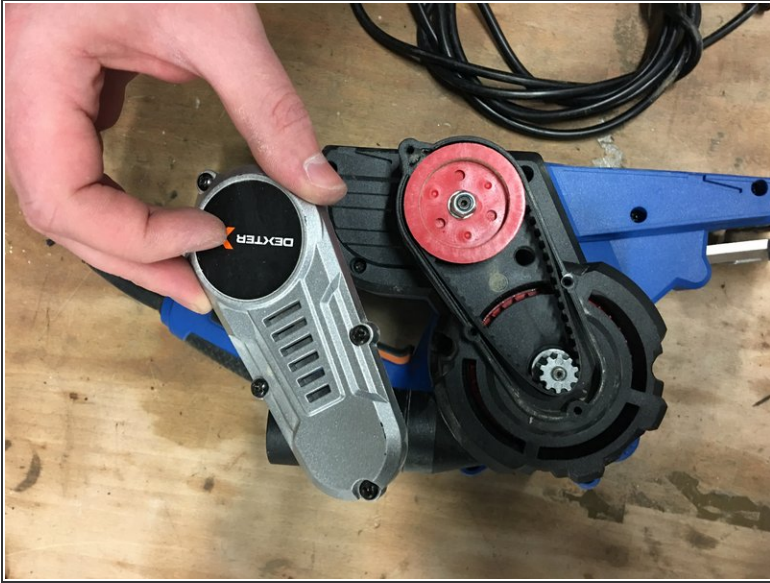
- Remove the drive belt.

Step 6



- Replace with the new drive belt. To put it on, place the drive belt on the right wheel first.

Step 7



- Screw the protection cap back into place with the four screws.

Step 8



- Replace the sanding belt and handle.