



# SRS-XB22 Battery Replacement

Device teardown to access the battery for replacement.

Written By: Charlie Turner



# INTRODUCTION

This is a battery replacement / teardown guide for the SRS-XB22 Bluetooth speaker. I couldn't find a guide anywhere on the internet for the speaker; as I had to fix my wife's speaker, I thought I'd do a guide on how I tore it down. I hope this helps you.



## TOOLS:

- [Spudger](#) (1)
  - [iFixit Opening Picks set of 6](#) (1)
  - [Phillips Head Screwdriver: Size PH1](#) (1)
-

## Step 1 — Remove the front grill



- Firstly, you need to pry the speaker grill away from the speaker.
- Use a spudger/guitar pick to prise up each end of the grill.
- You are trying to lift a clip at either end. (*circled in red*)
- Once lifted at both ends, gently pull the grill forwards.

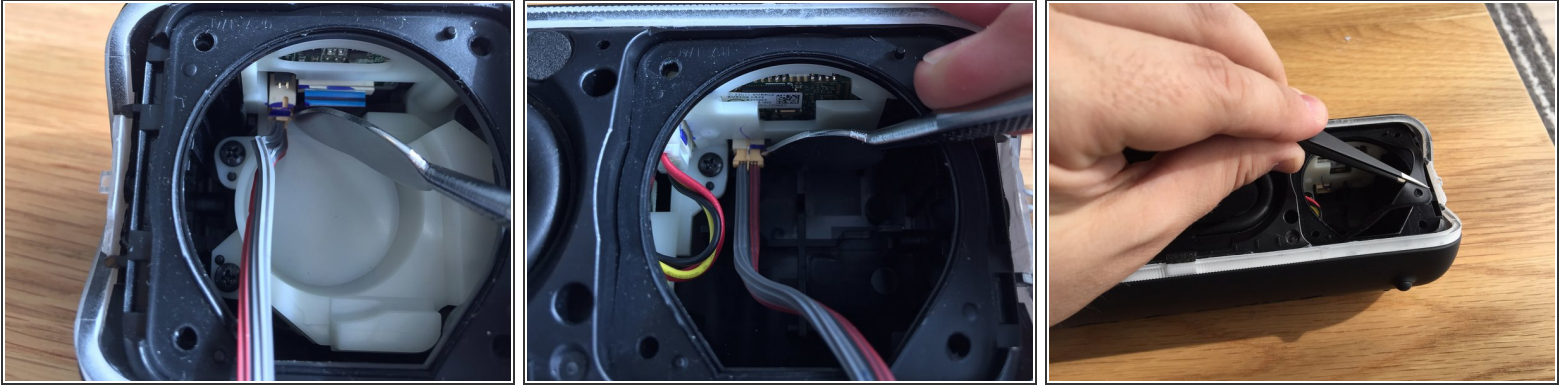
## Step 2 — Unscrew the speakers



- Completely remove the grill.
- Remove the 8 screws that hold the speakers in place.
- Slowly pull the speakers forward to free them from the case.



### Step 3 — Remove the speakers



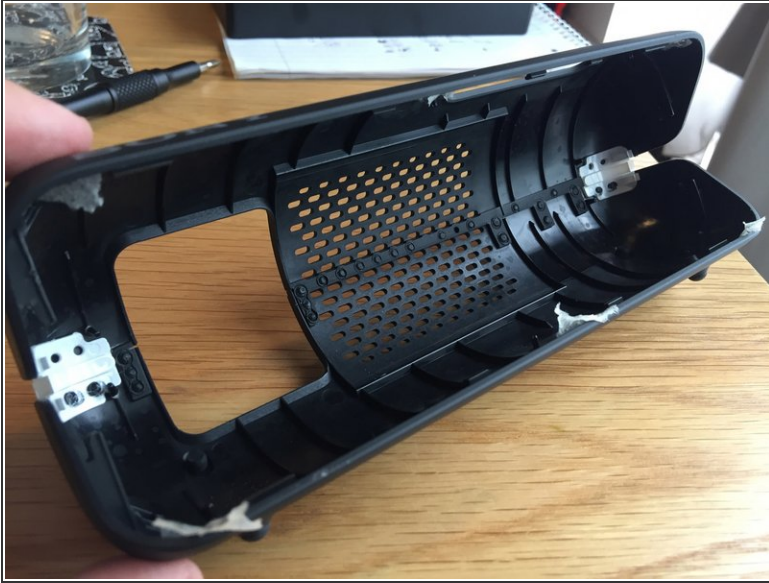
- Disconnect the speaker cables from the internal circuit boards.
- Be careful, the sockets are easy to damage
- Remove both of the rubber gaskets from the case - one for the left speaker, one for the right.

### Step 4 — Removing the outer case.



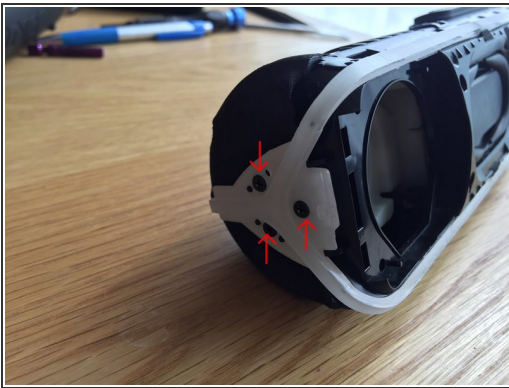
- Starting at the ends of the speaker, prise the back case away from the main unit.
- Work your way along the front of the case.
- Once the front is freed, work your way along the edges, freeing the whole case.
  - *There is A LOT of double sided tape between the outer and inner case. It requires a lot of work to remove it.*
  - *The case is one piece. Although it looks as if it splits at the rear, it is sealed together.*

## Step 5 — Remove the rear casing



- Remove the rear outer casing of the speaker.

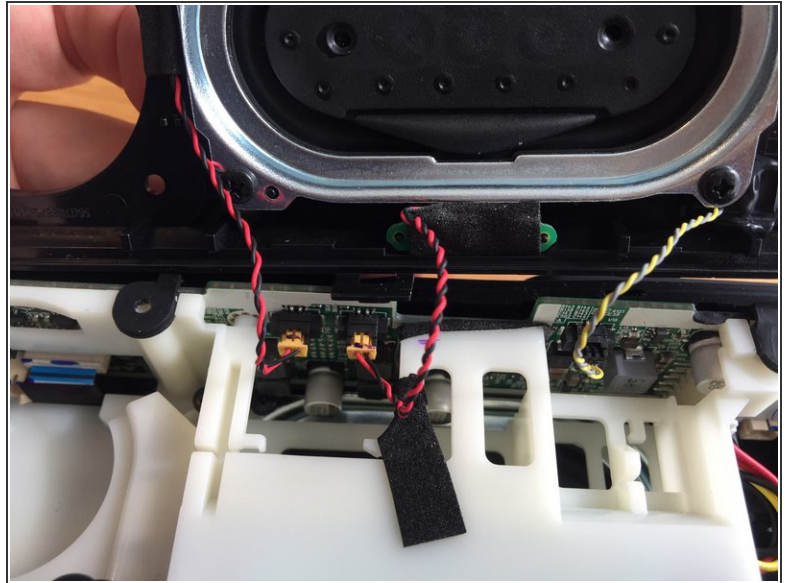
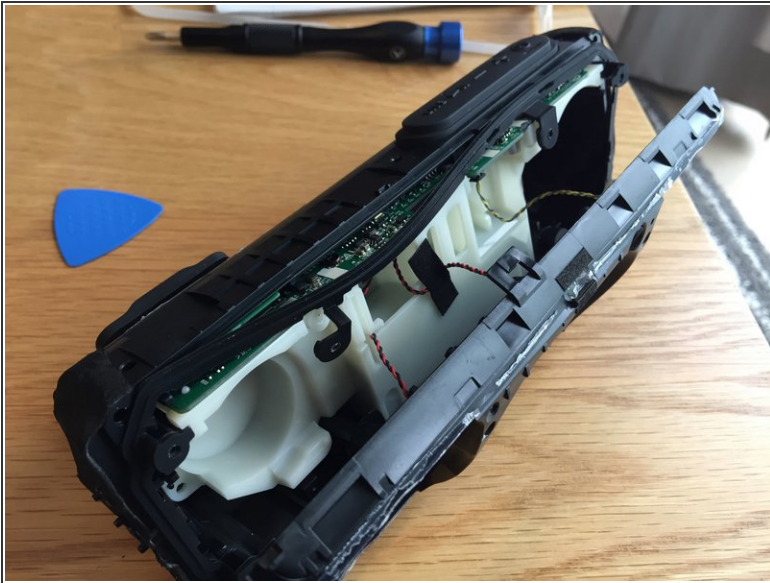
## Step 6 — Remove the front cover



- Remove 3 screws at either end of the speaker, so 6 screws in total.
- Using a spudger, unclip the top and bottom plastic clips, holding the front of the speaker.
- *(I made the error and removed the illuminated surround, hence it is not in two of my pictures here - it is NOT necessary to remove it)*

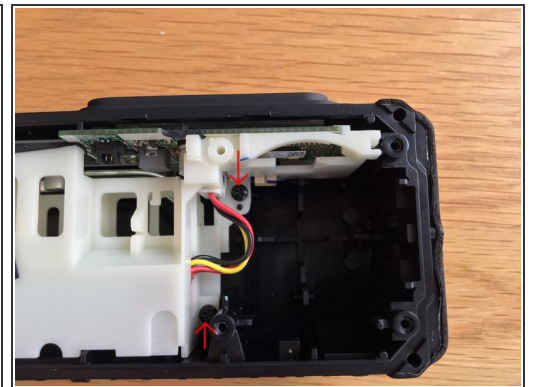
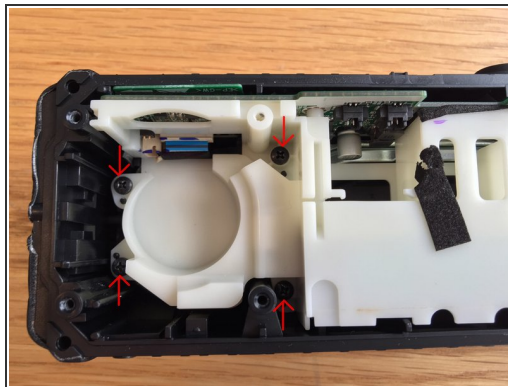
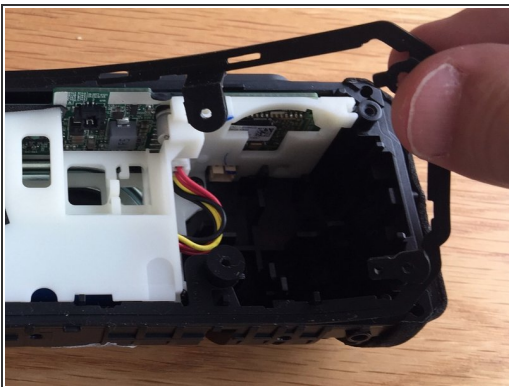


## Step 7 — Disconnect the front panel



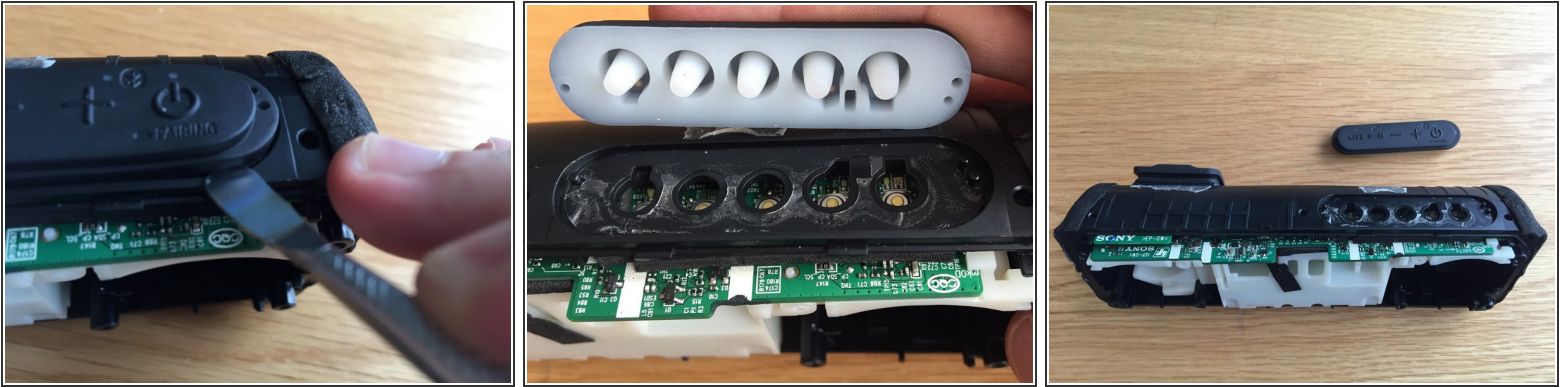
- Slowly pull the front panel forwards.
- Be careful, there are 3 wires still connected.
- Disconnect the three wires, freeing the front panel.

## Step 8 — Freeing the internal components



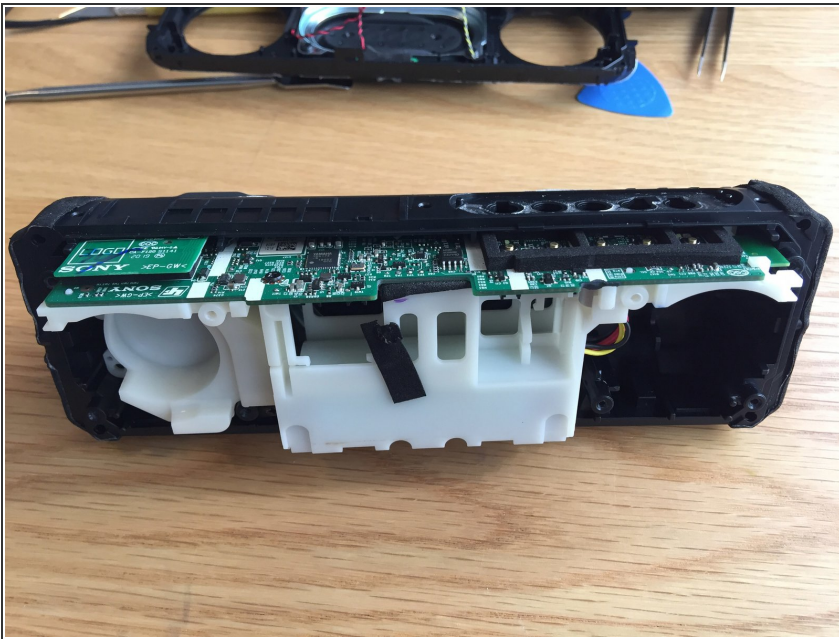
- Lift the rubber gasket away from the unit.
- Locate the 6 screws holding the internal structure in place.
- Remove these 6 screws.

## Step 9



- Use a spudger to lift the button away from the speaker.
- Be careful, it's held down by more sticky tape!

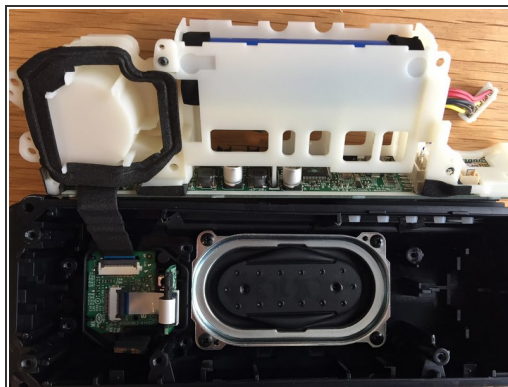
## Step 10 — Remove the internal structure



- Slide the main plastic unit forward from the speaker.
- There will still be a couple of circuit boards in the back that are connected. These are the boards for the rear panel.



## Step 11 — Remove the battery



- Disconnect the battery lead from the circuit board.
- Carefully, pull the battery out of its recess.

To reassemble your device, follow these instructions in reverse order.