



Samsung Galaxy A10 Battery Replacement

Use this guide to replace a worn-out or dead...

Written By: Adriana Zwink



INTRODUCTION

Use this guide to replace a worn-out or dead battery in your Galaxy A10.

If your battery is swollen, [take appropriate precautions](#). For your safety, discharge your battery below 25% before disassembling your phone. This reduces the risk of a dangerous thermal event if the battery is accidentally damaged during the repair.

You'll need replacement adhesive to reattach components when reassembling the device.



TOOLS:

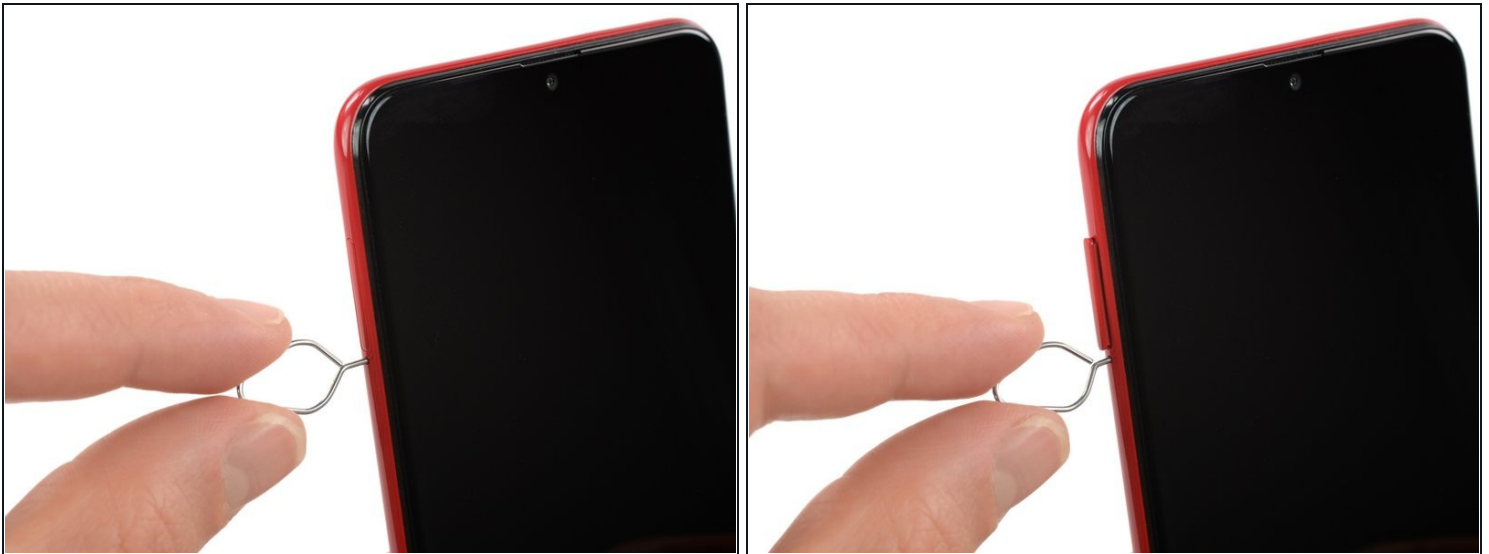
Phillips #00 Screwdriver (1)
SIM Card Eject Tool (1)
iFixit Opening Picks (Set of 6) (1)
Spudger (1)
iOpener (1)
Plastic Cards (1)



PARTS:

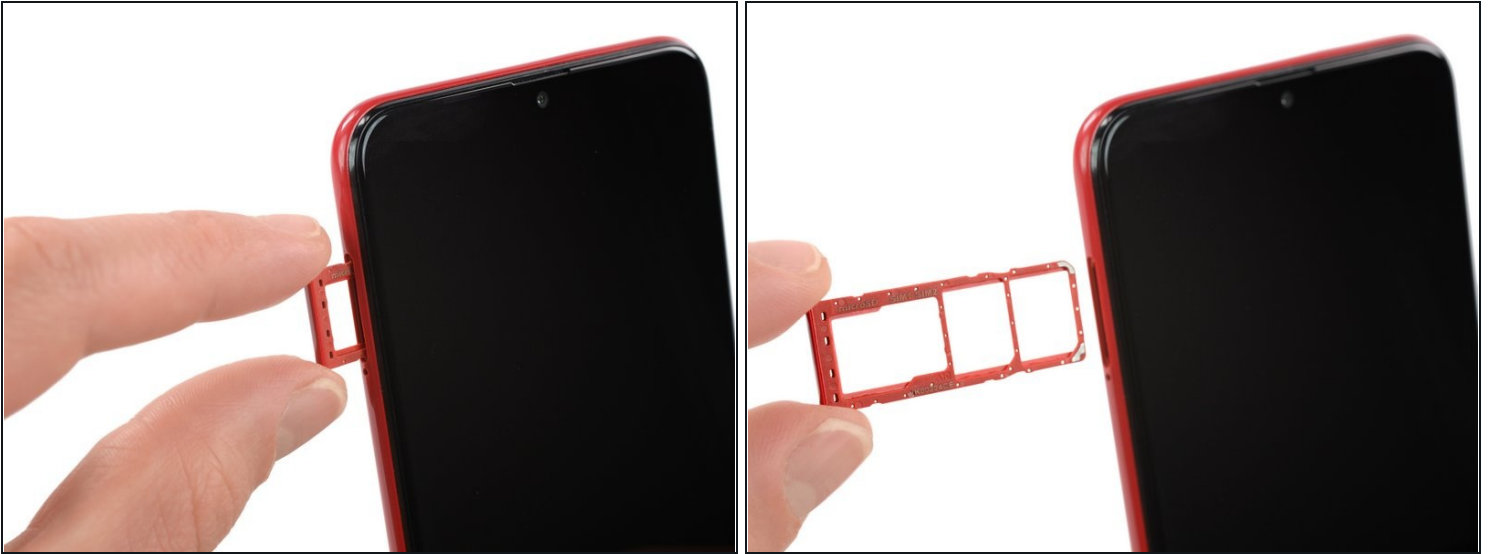
Galaxy A10 Battery (1)

Step 1 — Samsung Galaxy A10 SIM Tray Replacement



- Insert a SIM card eject tool, a SIM eject bit or a straightened paper clip into the hole on the SIM tray located at the left side of the phone.
- Press firmly to eject the tray.

Step 2



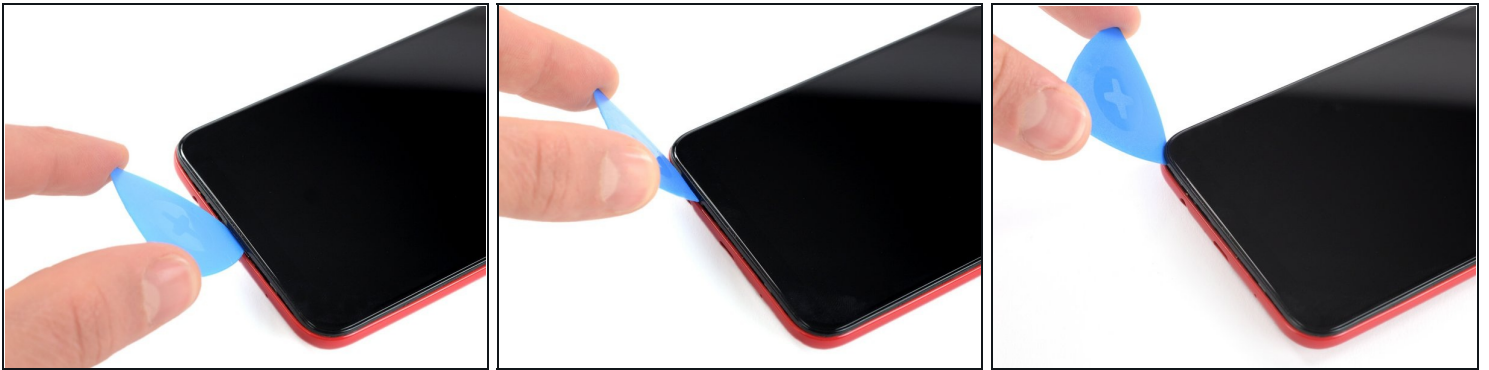
- Remove the SIM card tray.
- ⓘ When reinserting the cards, make sure to properly orient them in the tray.

Step 3 — Back Cover



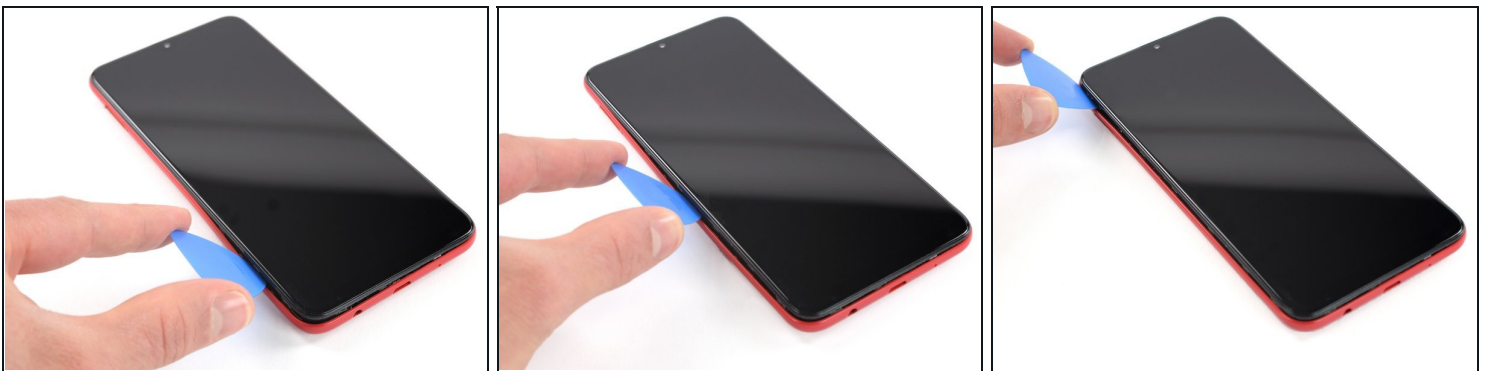
- ⓘ The back cover is held in place by plastic clips.
- Insert an opening pick between the screen and the back cover on the bottom of the phone where the charging port is located.

Step 4



- Slide the opening pick to the bottom left corner to release the clips.

Step 5



- Slide the opening pick along the left edge to the top left corner of the phone, to release the clips.

Step 6



- Slide the opening pick from the top left corner to the top right corner to release the plastic clips.

Step 7



- Slide the opening pick from the top left corner to the bottom right corner to release the remaining clips.

Step 8



- Remove the back cover.

Step 9 — Samsung Galaxy A10 Motherboard Cover Replacement



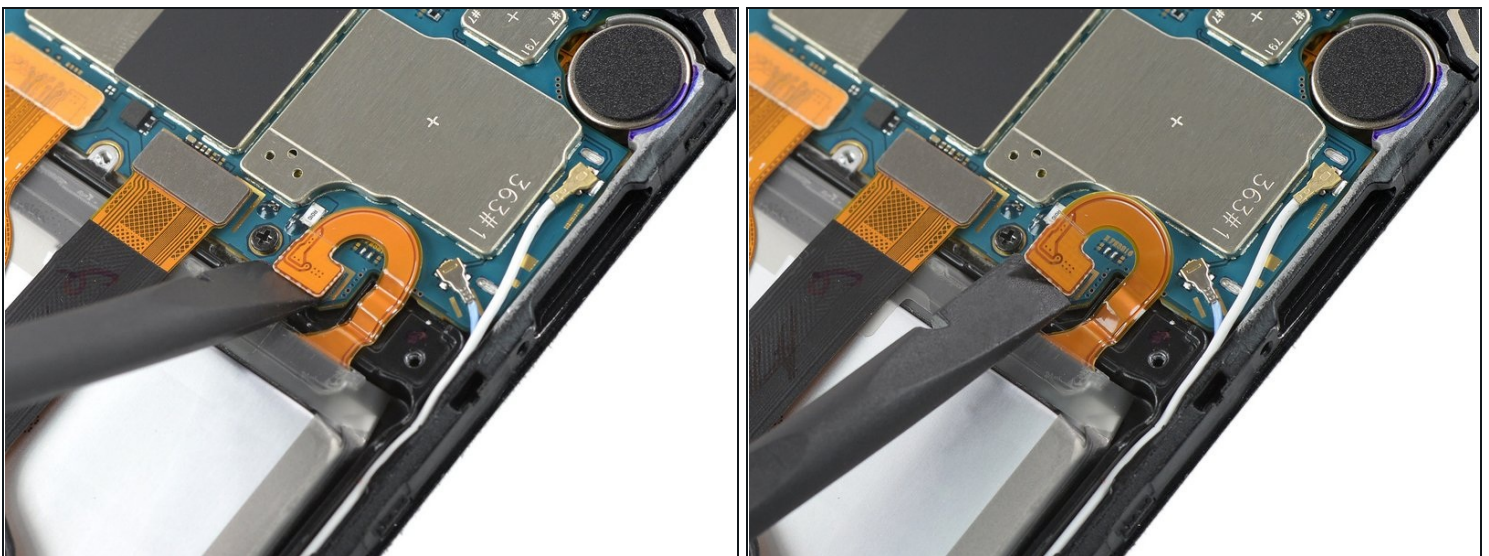
- Remove the three Phillips #00 screws (3 mm length).

Step 10



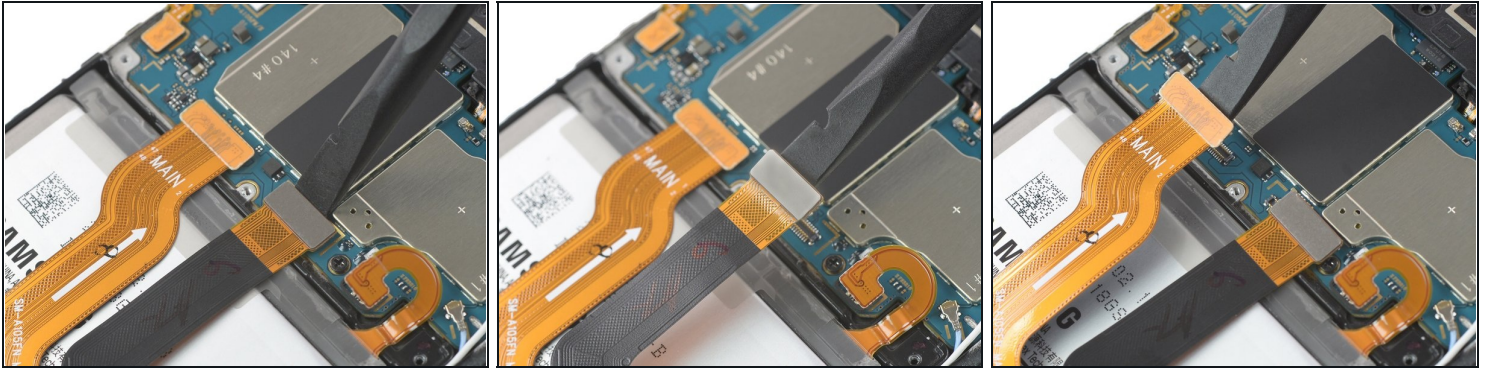
- Use the flat end of a spudger to pry up the motherboard cover to release the plastic clips which hold the cover in its place.
- ⓘ The clips can be a bit resistive. If you're having trouble prying up the motherboard cover, twist the spudger to make the process easier.
- Remove the motherboard cover.
- ⓘ The remaining plastic clips should release during this process or can be unhinged easily by hand.

Step 11 — Battery Disconnect



- Use a spudger to disconnect the battery by prying the connector straight up from its socket.

Step 12 — Battery



- Use the flat end of a spudger to pry up and disconnect the interconnect and display flex cables from the motherboard.

Step 13



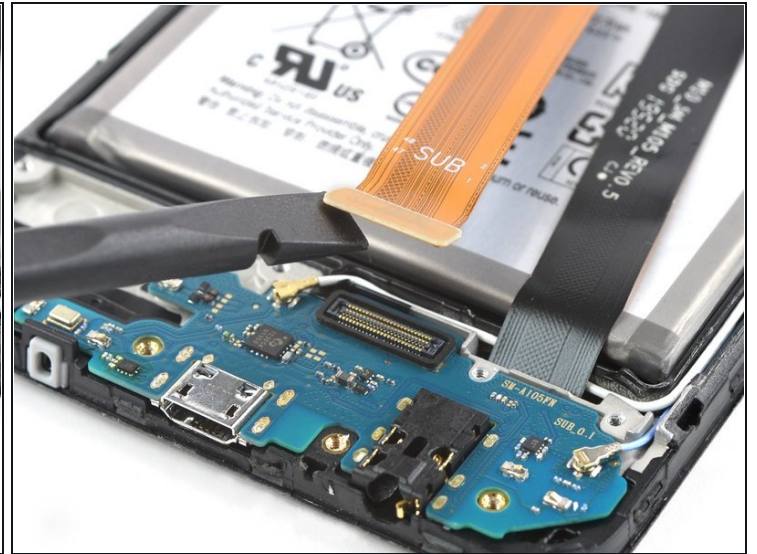
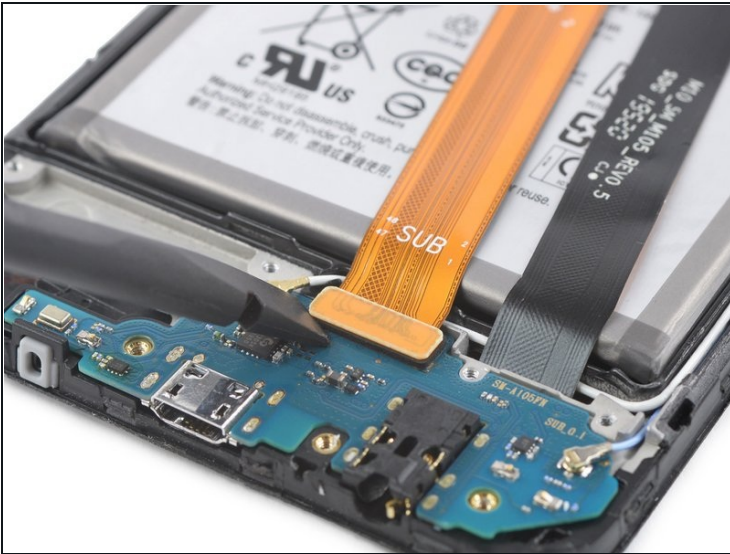
- Remove the eight Phillips #00 screws from the bottom (3 mm length).

Step 14



- Remove the daughterboard cover.

Step 15



- Use a spudger to disconnect the interconnect cable by prying the connector straight up from its socket.
- Remove the interconnect cable.

Step 16



- Apply [a heated iOpener](#) to the screen to loosen the adhesive beneath the battery. Apply the iOpener for at least two minutes. You might need to repeat this procedure several times during the battery replacement.

Step 17



- Carefully bend the display cable away from the battery to make room for removal.

⚠ Take care to bend the cable only slightly.

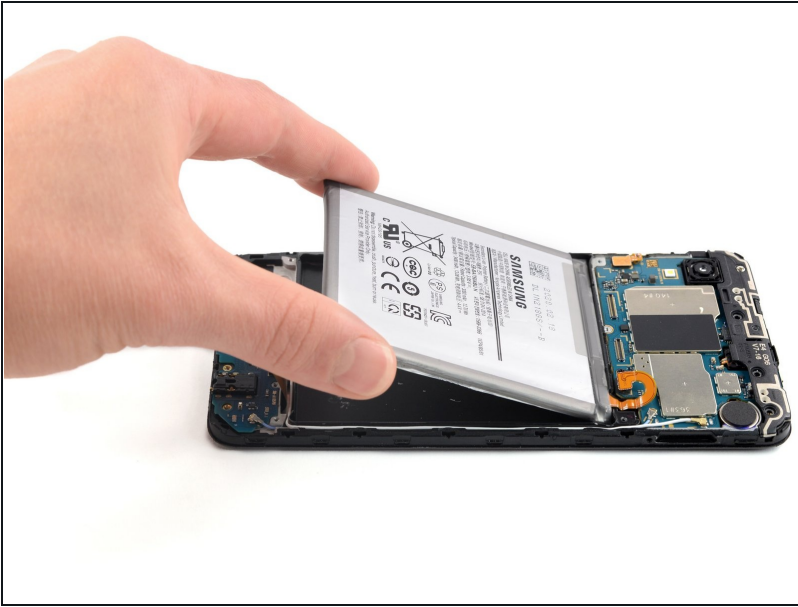
Step 18



⚠ Try your best not to deform the battery during this process. Soft-shell lithium-ion batteries can leak dangerous chemicals, catch fire, or even explode if damaged. Do not use excessive force or pry at the battery with metal tools.

- Insert a [plastic card](#) underneath the bottom edge of the battery.
- Carefully slide it underneath the battery to loosen the adhesive.
- Continue sliding the plastic card underneath to pry up the battery from the bottom.

Step 19



- Remove the battery.

- ⚠ Do not reinstall a damaged or deformed battery, as doing so is a potential safety hazard. Replace it with a new battery.
- ⚠ Secure the new battery with pre-cut adhesive or double-sided adhesive tape. In order to position it correctly, apply the new adhesive into the device at the places where the old adhesive was located, not directly onto the battery. Press the new battery firmly into place.

If possible, turn on your device and test your repair before installing new adhesive and resealing.

To reassemble your device, follow these instructions in reverse order. Apply new adhesive where necessary after cleaning the relevant areas with isopropyl alcohol (>90%).

For optimal performance, calibrate your newly installed battery: Charge it to 100% and keep charging it for at least 2 more hours. Then use your device until it shuts off due to low battery. Finally, charge it uninterrupted to 100%.

Take your e-waste to an [R2 or e-Stewards certified recycler](#).

Repair didn't go as planned? Try some [basic troubleshooting](#), or ask our [Answers community](#) for help.