



Canon EOS M5 Teardown

REMEMBER to record (like, take photos of)...

Written By: Terrance



INTRODUCTION

REMEMBER to record (like, take photos of) screws you removed. Some are fine metal thread type and others are coarse self-tap for plastic. Do not mix them!

TOOLS:

Tweezers (1)

Spudger (1)

Phillips #0 Screwdriver (1)

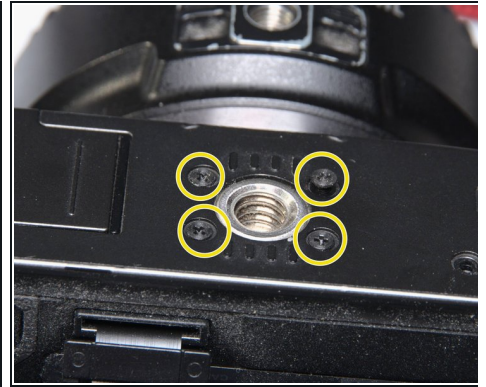
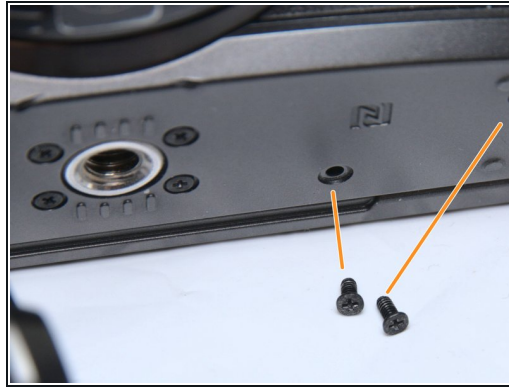
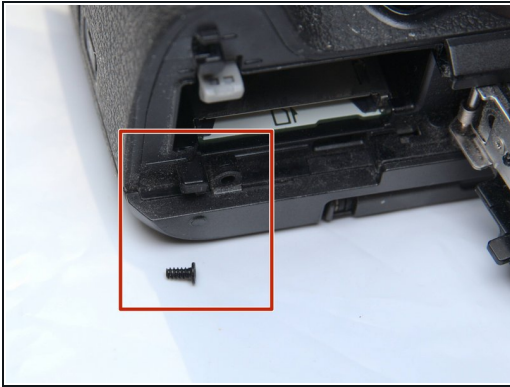
Phillips #1 Screwdriver (1)

Step 1 — Remove Strap



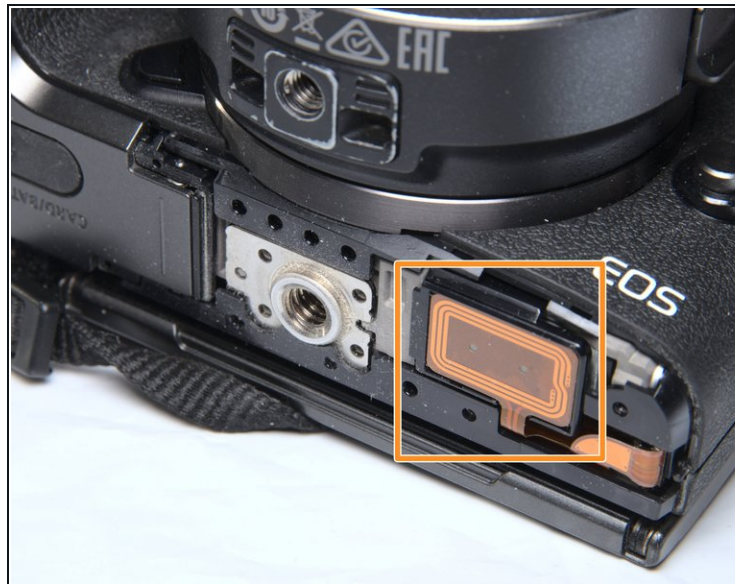
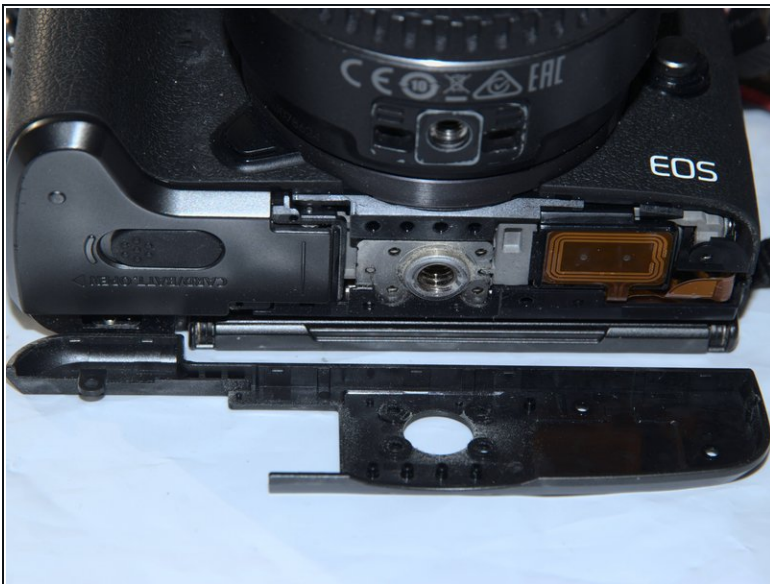
- Canon EOS M5
- Remove the strap, Or, it WILL cause mess during the teardown/repair. Remove it unless you are as SKILLFUL (lazy) as I am.

Step 2 — Bottom



- FIRST remove battery and SD card.
- remove 1 self-tap screw
- remove 6 screws
 - These 2
 - And these 4

Step 3 — Bottom Case



- Remove bottom cover
- This is the NFC antenna(coil).

Step 4 — Back Case, left



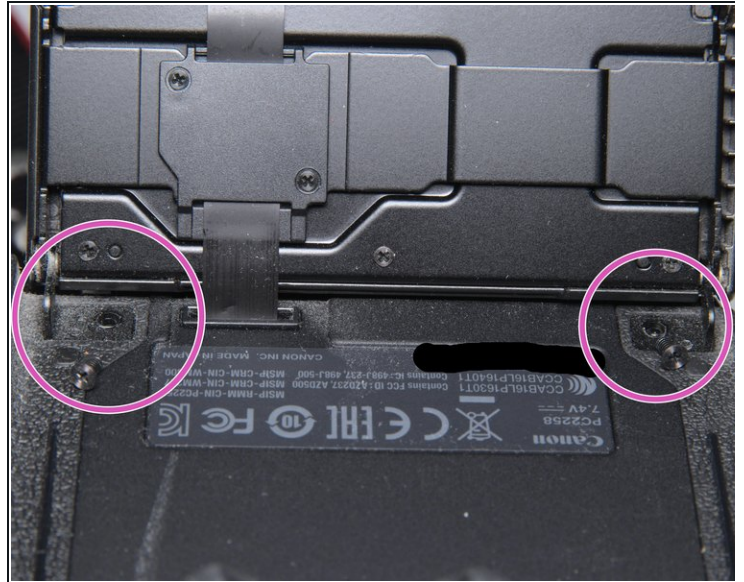
- Left side:
 - Remove metal thread screw
 - Remove self-tap screw

Step 5 — Back Case, right



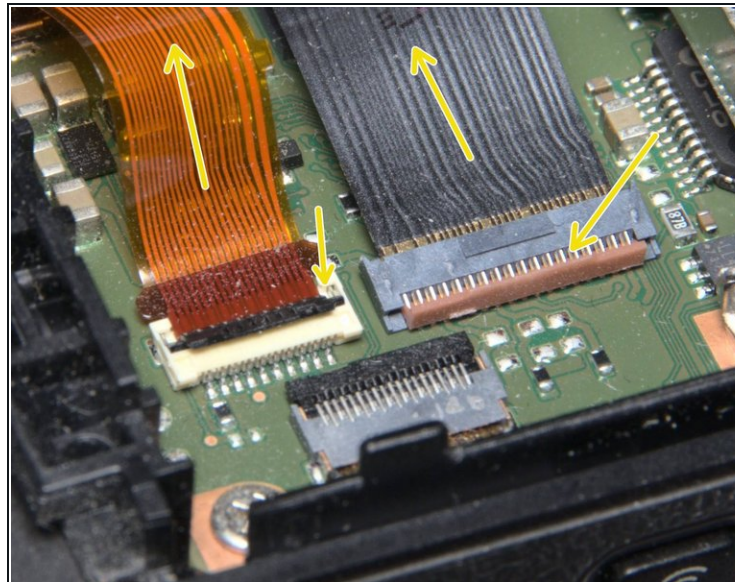
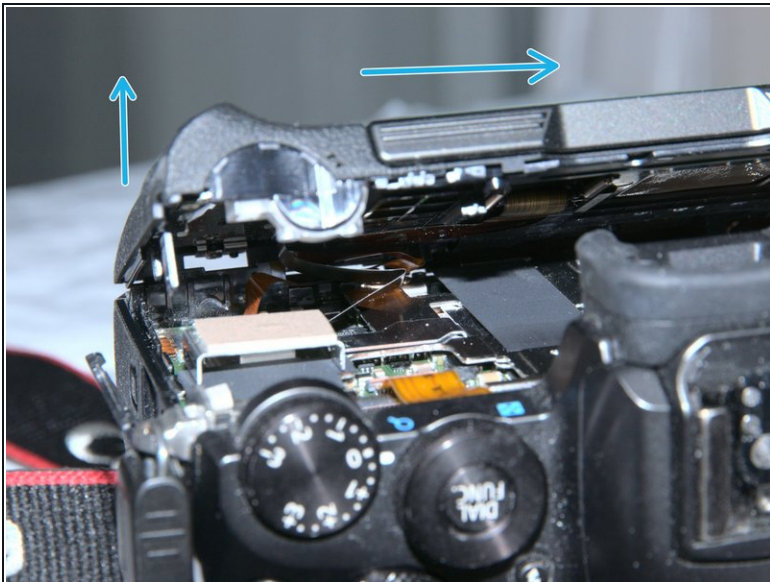
- Remove 1 screw.

Step 6 — Back Case, back



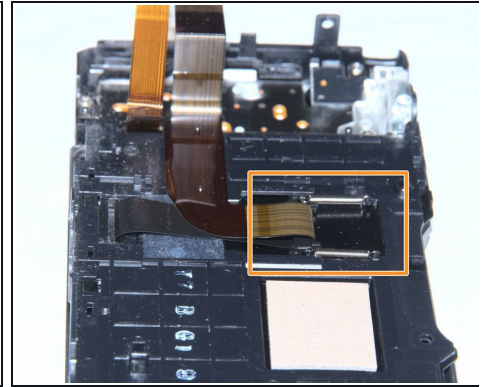
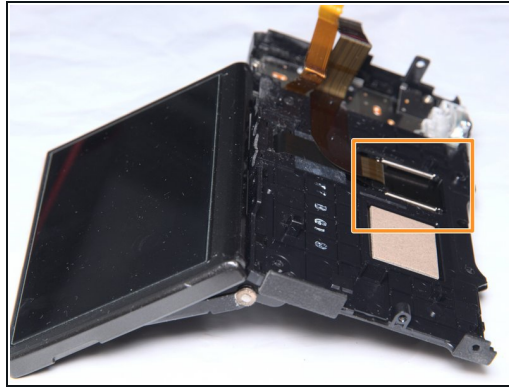
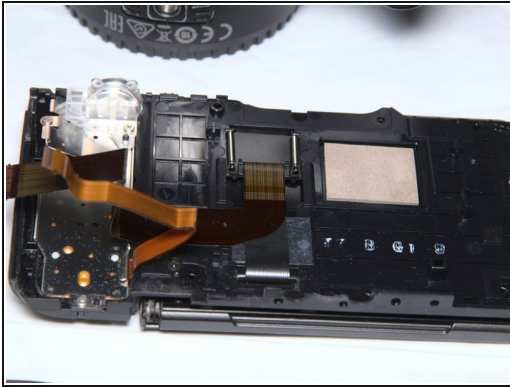
- Remove 4 metal thread screw.

Step 7 — Back Case, Detach FPC



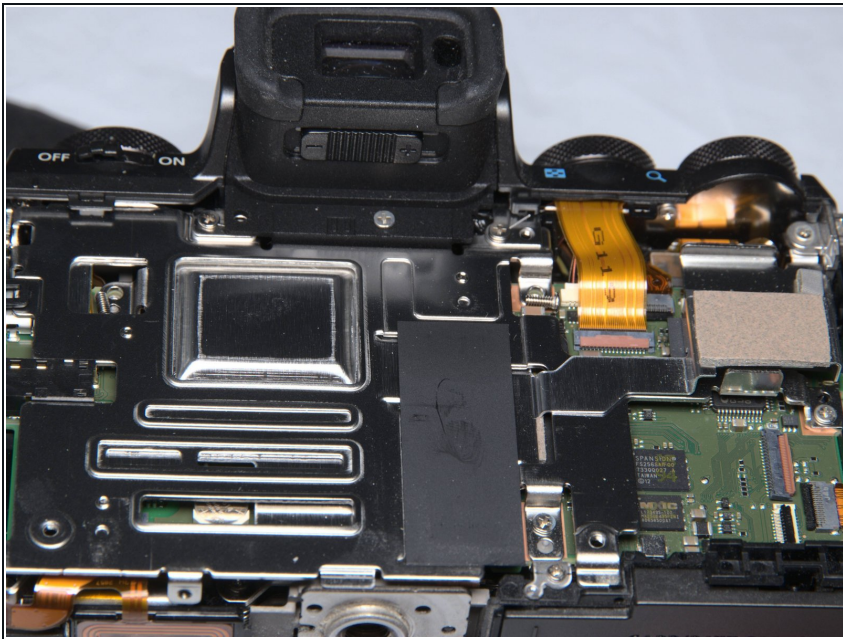
- Gently, lift (towards back) and slide the back cover towards left (THE LEFT when you holding the camera)
- Disconnect 2 FPC.

Step 8 — The Back Case & Touch LCD.



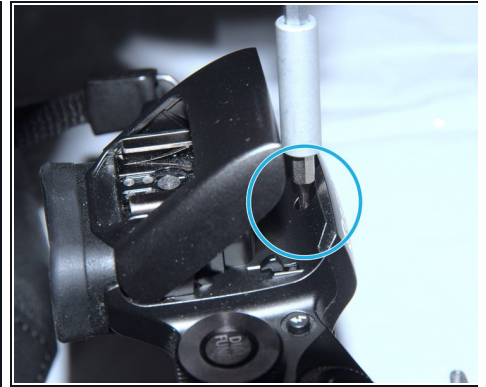
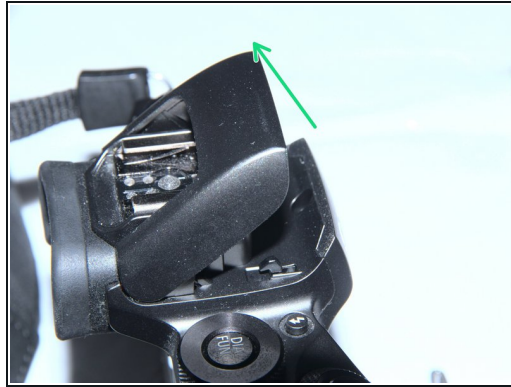
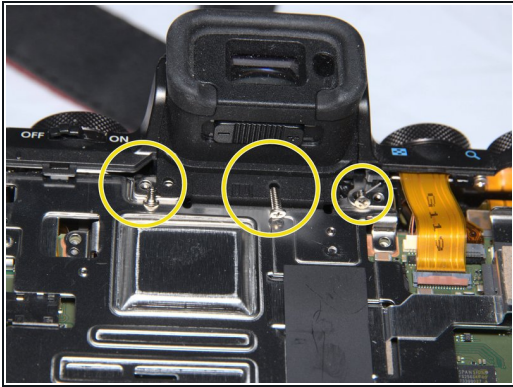
- The back case with LCD assembly.
- The beautiful LCD FPC stretcher

Step 9 — Inside The Camera, Back



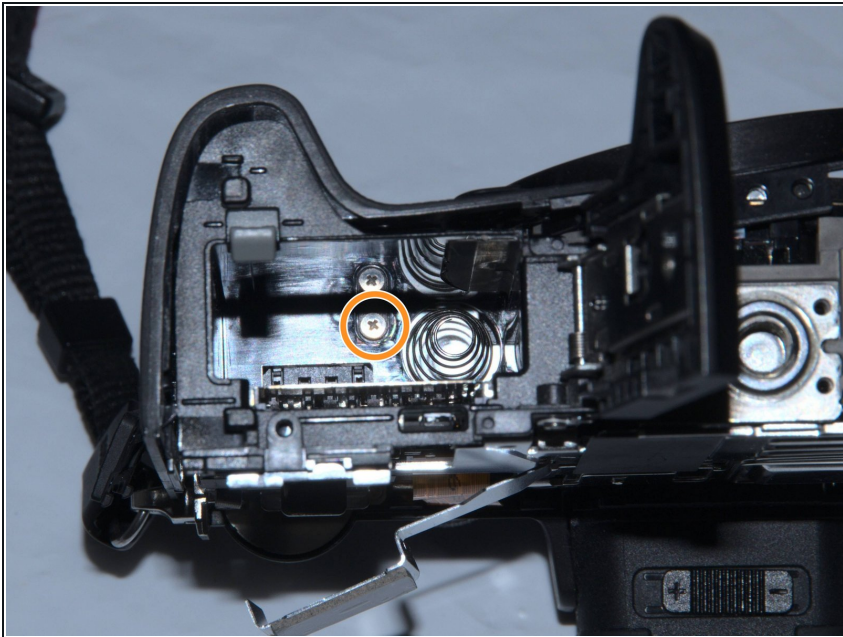
- We are in side the camera.

Step 10 — Screw, Screw, Screw, Screw



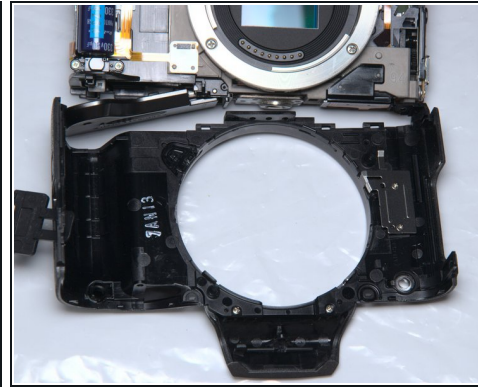
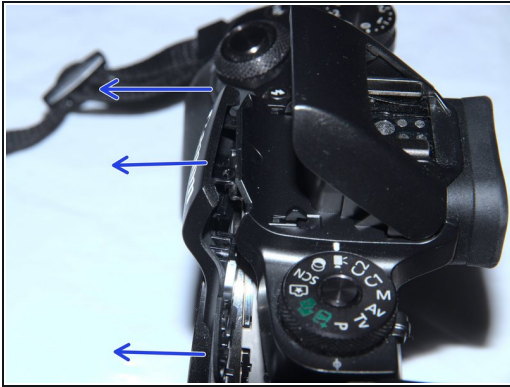
- Remove 3 screws near the EVF. REMEMBER lengths and hole positions. The center one is longer. The left holes.
- Pop the speedlight (flash)
- Remove the screw covered by the speedlight.

Step 11 — More Screw, Battery Compartment



- Remove 1 screw in battery bay.
- There's only one. Trust me.

Step 12 — Remove Front Case



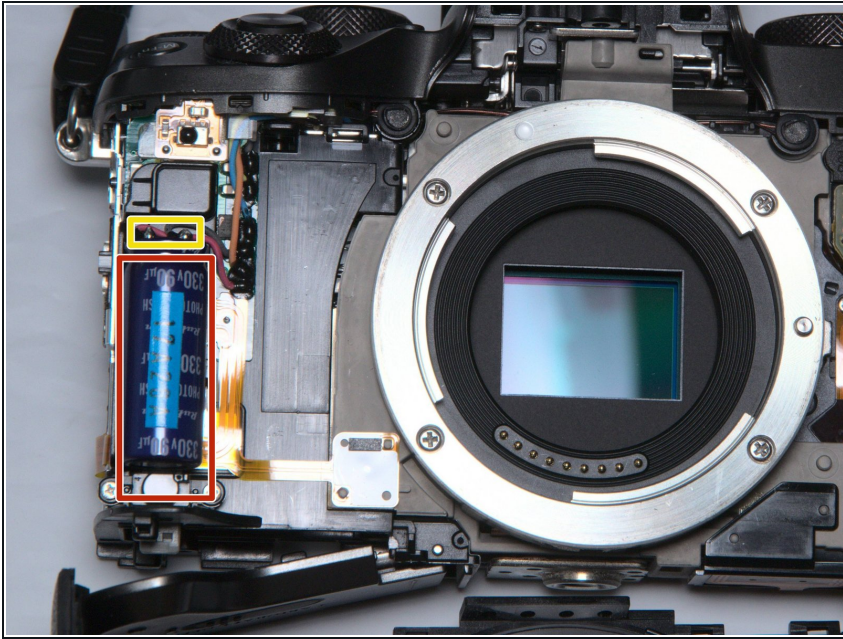
- Now the front case comes off.
- There are some clips, be gentle and patient.

Step 13 — Front Case and Inside.



- Please keep body cap on as possible, for shielding again dust.
- Front cover comes off with 2 small parts. Don't loose them.

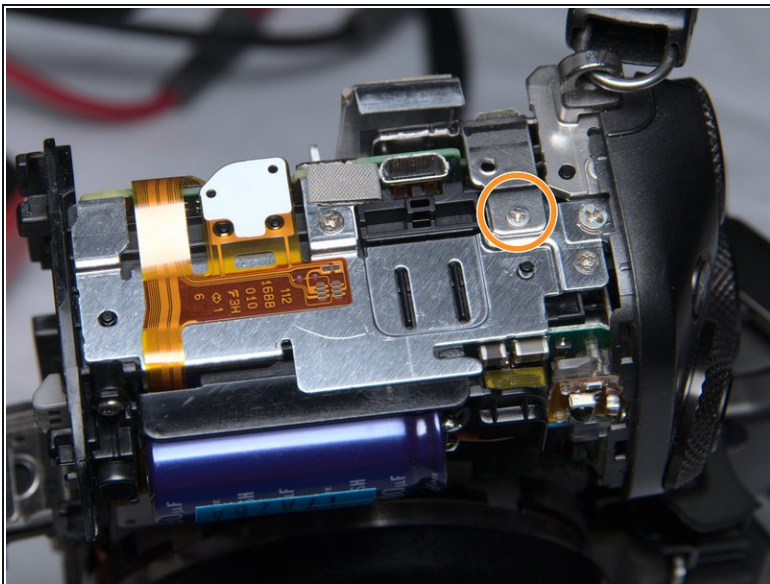
Step 14 — DISCHARGE the Capacitor!!!



⚠ When you see the speedlight reservoir capacitor.

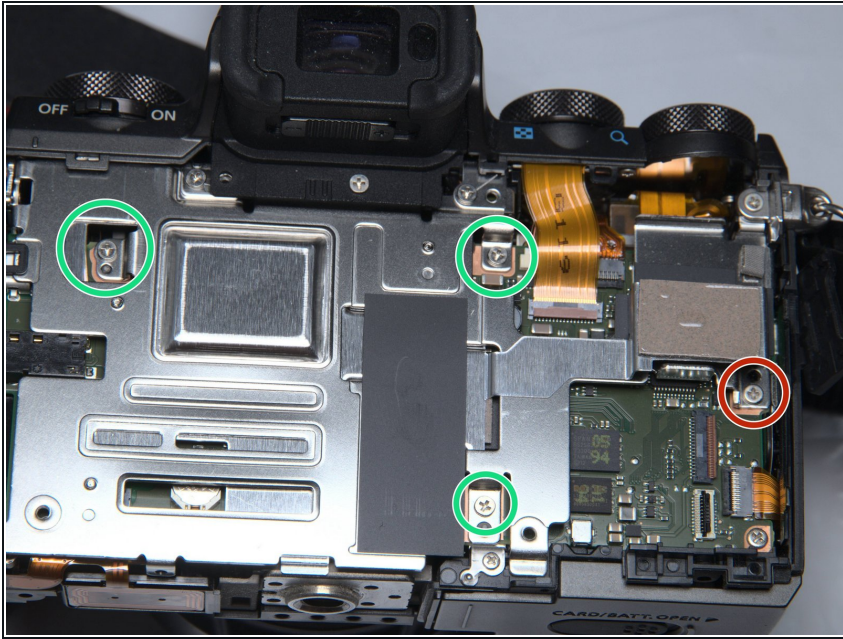
- The capacitor
- To avoid electric shock and damage, DISCHARGE IT with a 2kohm~10kohm resistor for more than 15 seconds, ASAP!!!

Step 15 — Metal Frame, left, right



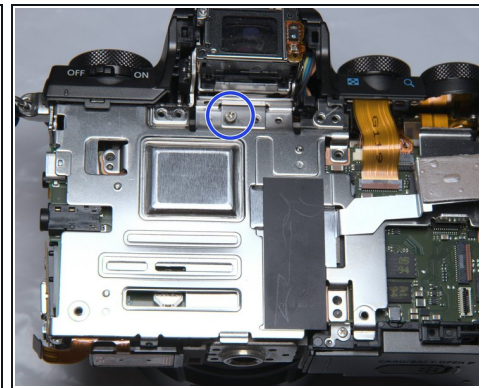
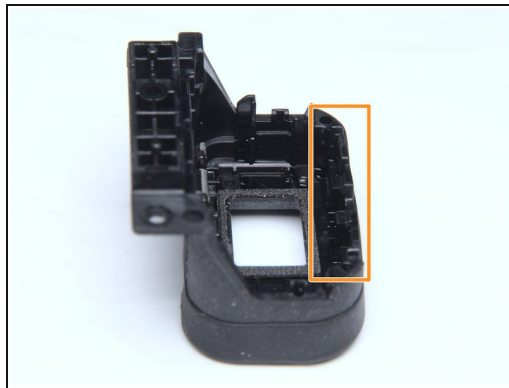
- Right side, remove 1 screw.
- Left side: remove 1 screw.

Step 16 — Metal Frame, back



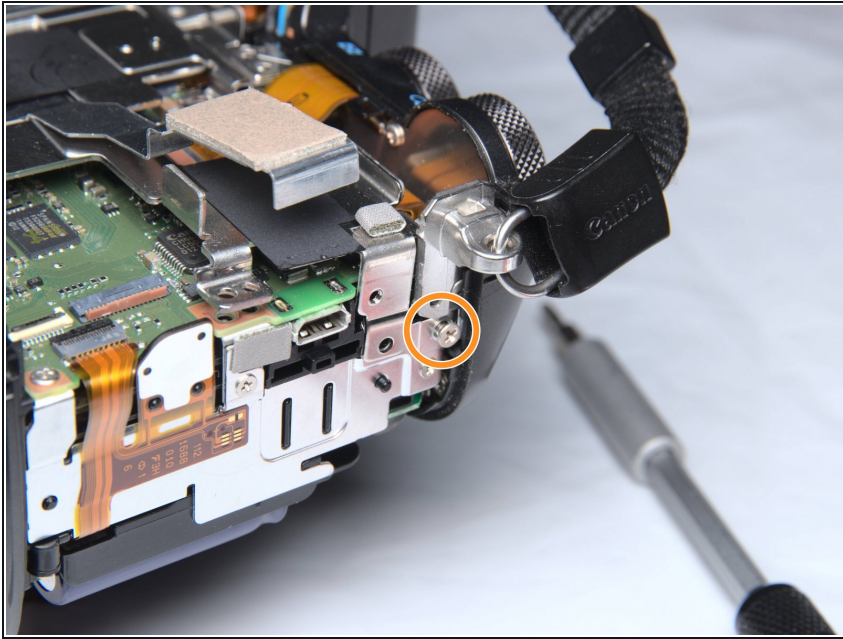
- Remove 3 metal thread screw
- Remove 1 self-tap screw.

Step 17 — EVF Case



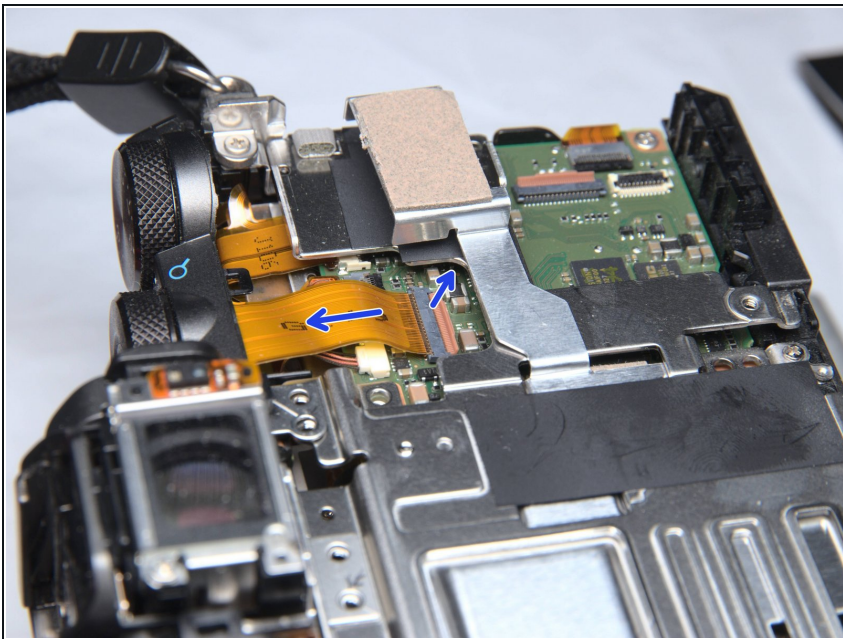
- Remove EVF plastic case.
- There are some clips.
- Remove 1 screw, REMEMBER from which hole!

Step 18 — Top Case, right



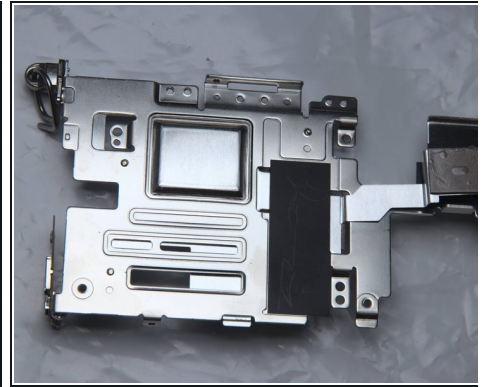
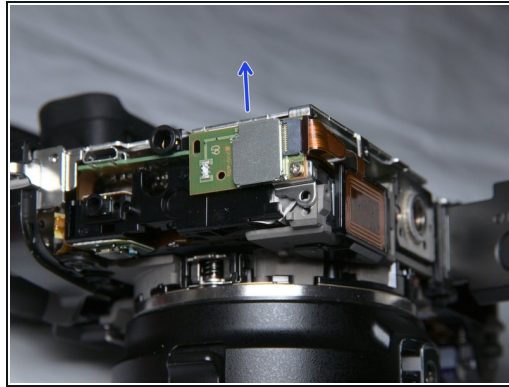
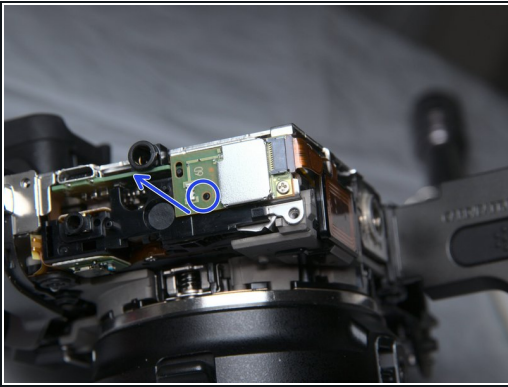
- Right side.: Remove 1 screw

Step 19 — Top Case, FPC



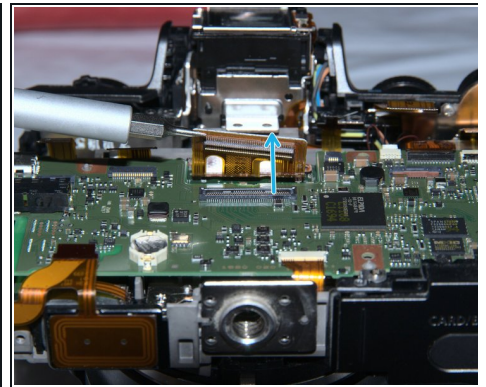
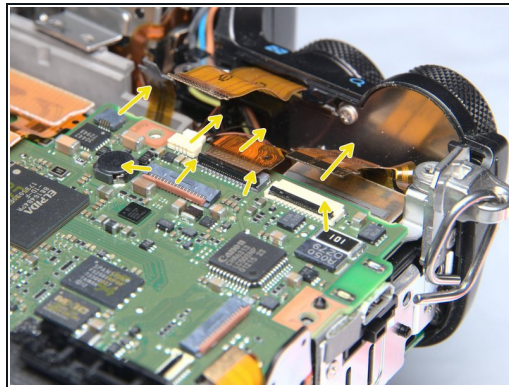
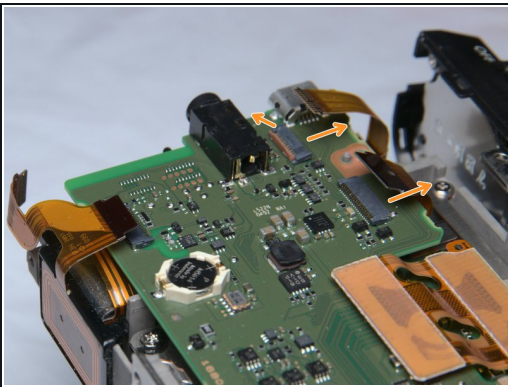
- Detach FPC.
- Be gentle enough We do NOT remove top case. Because it's kind of messy with some adhesive...

Step 20 — Metal Frame



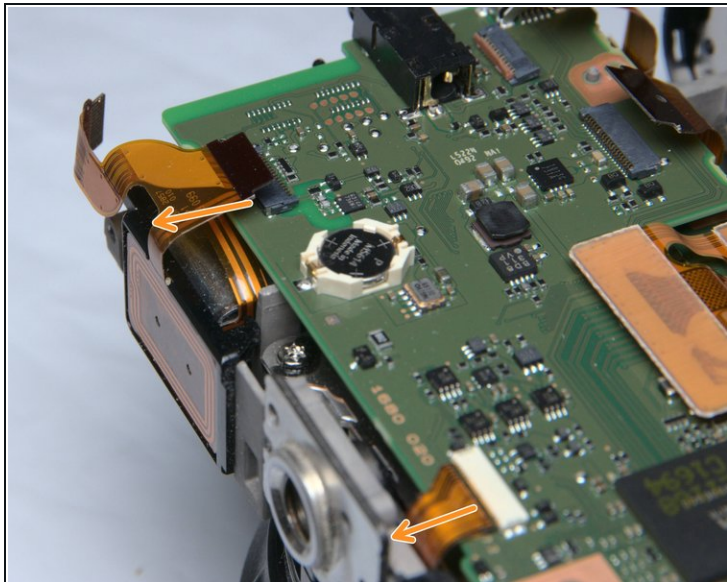
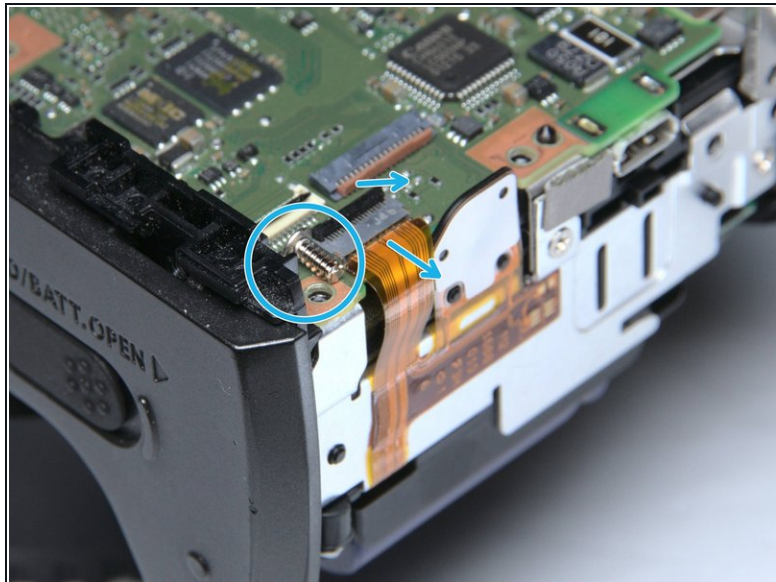
- When the top case is loosen. remove the metal frame.
- Or you can remove this BlueTooth board if not being lazy.

Step 21 — Main PCB, 11 FPC's



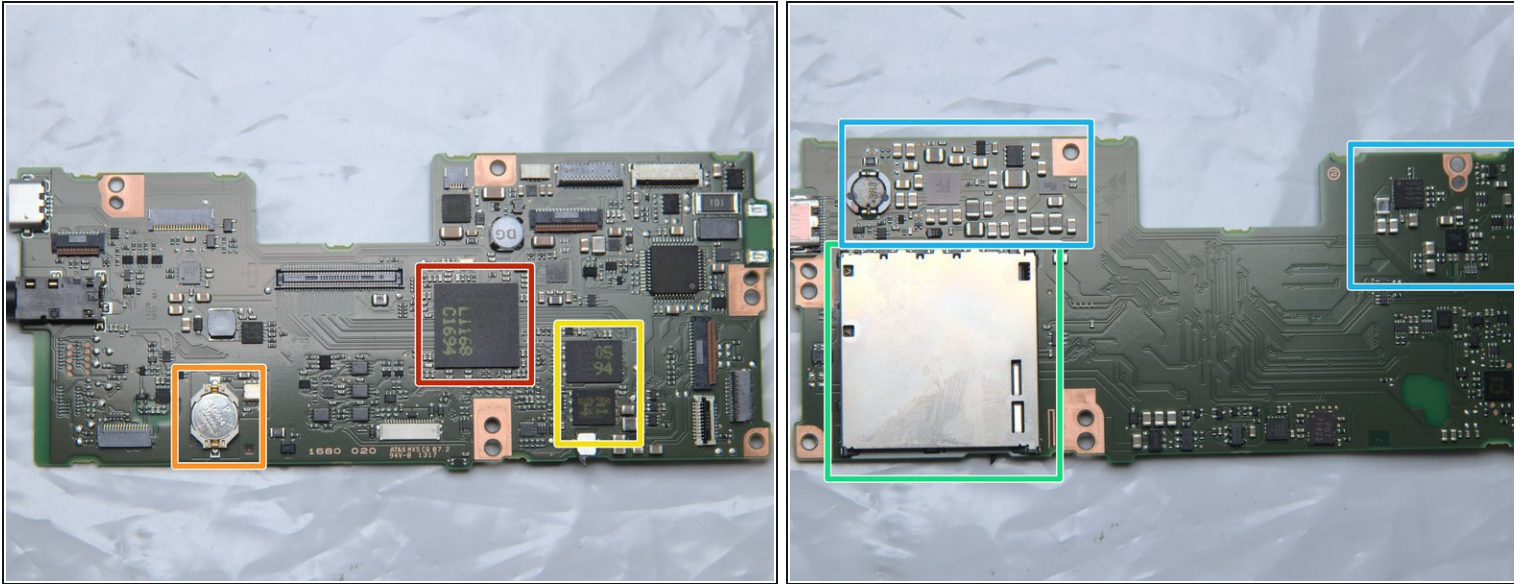
- IF you can count to 5:
 - PCB top left, detach 2 FPC. 1 ZIF, 1 non-ZIF
 - PCB top right, detach 4 FPC and 1 cable connector
 - PCB top center. detach sensor cable.

Step 22 — Main PCB, more FPC's and screw



- PCB right bottom.
 - Remove 1 screw
 - Detach 1 FPC
 - Detach 2 FPC

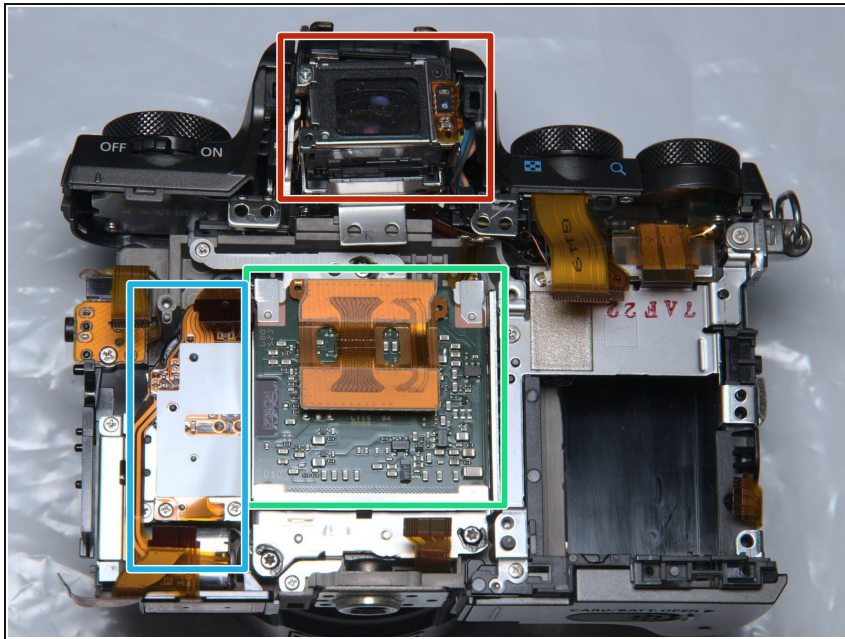
Step 23 — Enjoy (or Replace) the Main PCB



● Ladies and gentlemen, the mother board

- Digic and RAM
- RTC battery
- Some Flash
- SD socket
- Some power supply

Step 24 — Under Main PCB.



- EVF
- Sensor assembly
- Shutter assembly

ⓘ Without proper measuring devices, I did not mess with the sensor assembly. otherwise the back focal will be ruined.