



# Samsung Galaxy S II Screen Replacement

Step wise pictorial instructions for replacing damaged screen of Samsung Galaxy S II phone and description of common components used in the device.

Written By: Bader



## INTRODUCTION

Damaged touch screen of a mobile phone may render the device useless as it disables the touch function in the affected zone or at times the entire screen. Using this guide, damaged touch screen of a Samsung galaxy S2 mobile phone can be easily replaced at home using standard tools. This guide also provides information about the major components used in a mobile phone and the handling precautions to be taken during disassembly. Replacement of screen must be carried out extremely carefully to avoid damage to other delicate components.



### TOOLS:

- [Phillips #00 Screwdriver](#) (1)
- [Flathead Screwdriver](#) (1)



### PARTS:

- [Galaxy S II LCD Screen and Digitizer \(T-Mobile\)](#) (1)

## Step 1 — Remove back cover



- Gently remove the back cover starting from the slot given on the right side.

## Step 2 — Remove battery



- Use a Phillips #00 screwdriver to remove the battery from the slot.
- ⓘ Carefully place the battery away from some hot object or fire.



### Step 3 — Remove back case screws



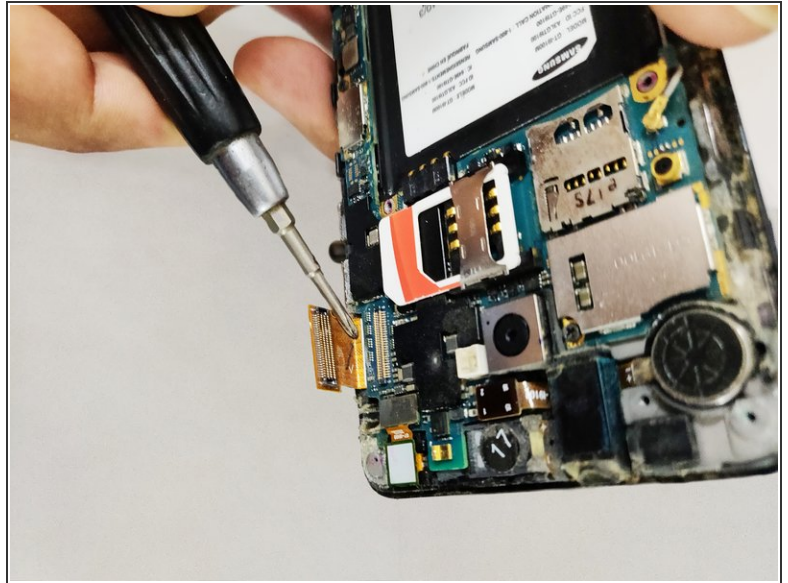
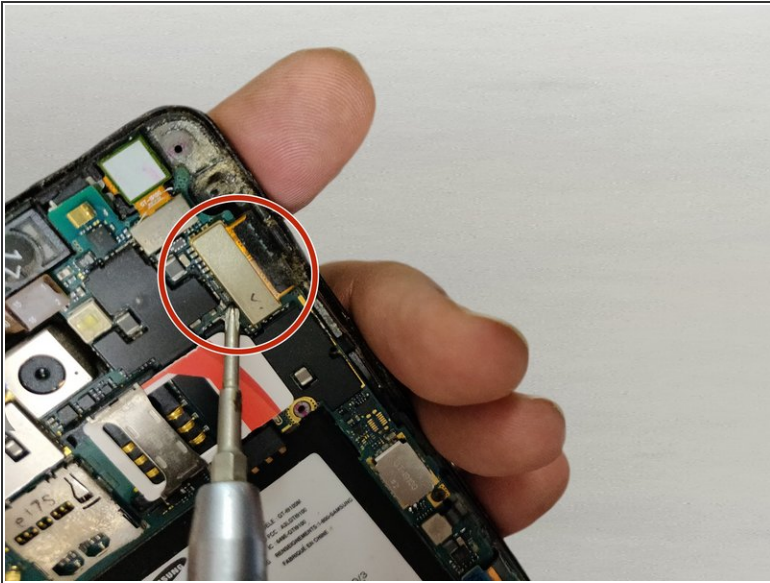
- Use a magnetic philips #0 head screw driver to open the 7 x 1/16 in (1.6 mm) philips head screws shown in the image.
- ☑ Place the screws carefully in a box.

### Step 4



- Gently unlock the snap locks starting from the top left corner and progressing along the perimeter to remove the back case.
- ⓘ To unlock the snaps, apply force close to the snap in order to avoid cracking of the plastic cover.
- Remove the plastic cover carefully and place on the white paper.

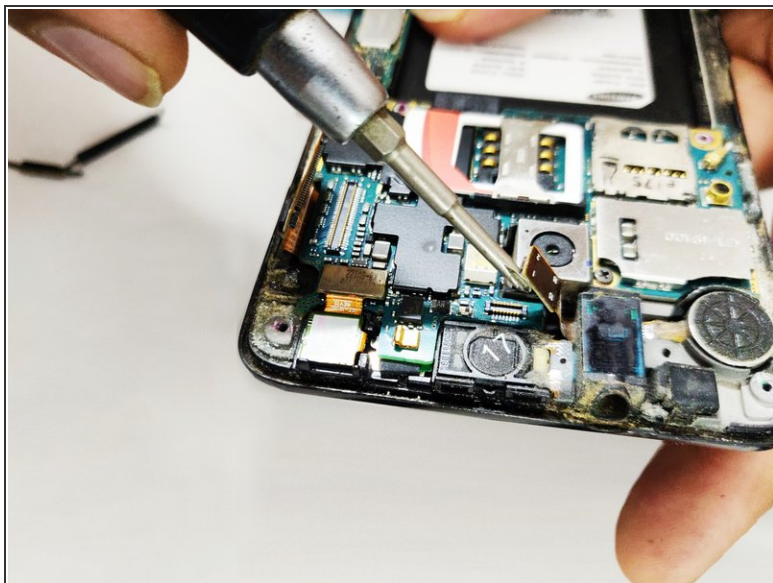
## Step 5



- Use a screwdriver or another pointed tool to disconnect the screen connector.
- Lift the cable out of the slot.
- ⓘ Gently handle the cable to avoid damage to the cable or the connector.

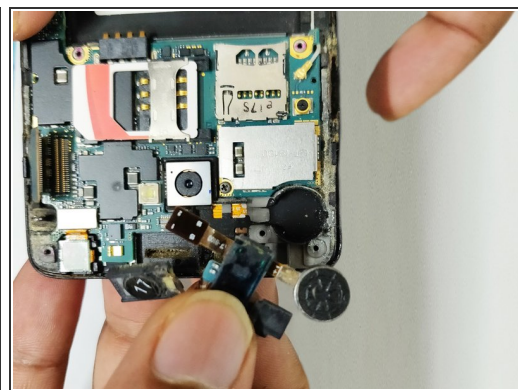
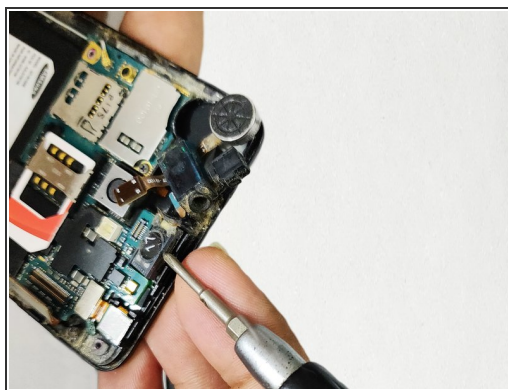
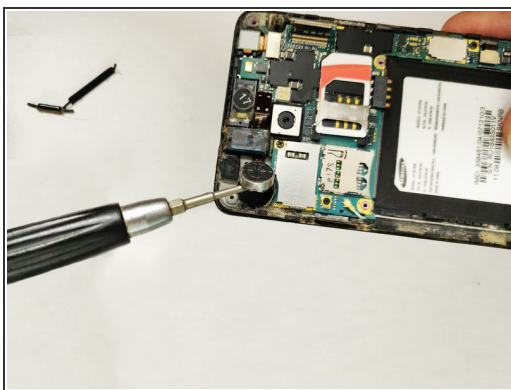


## Step 6



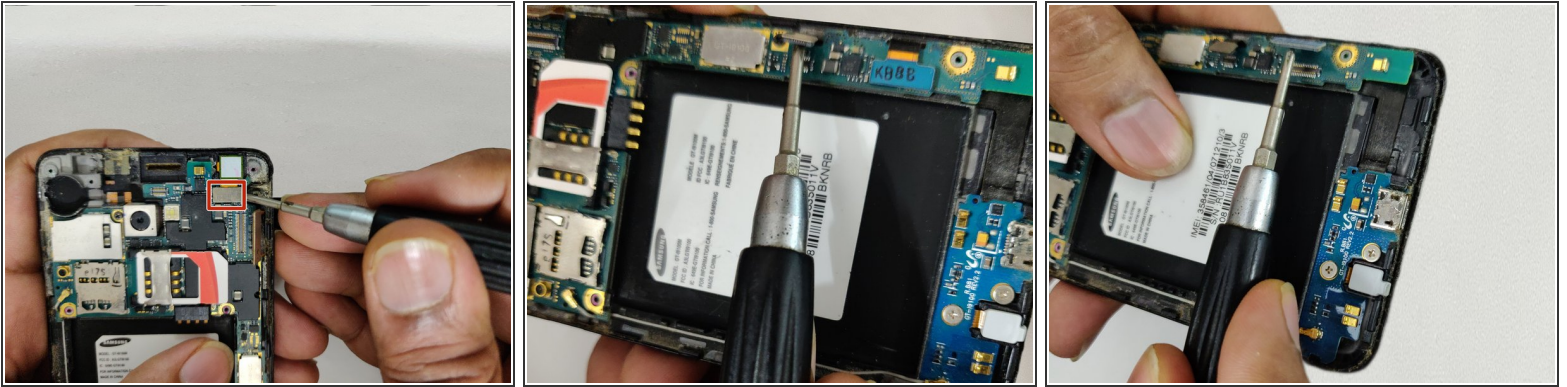
- Remove the connector for the speaker and audio jack carefully.
- ⓘ Gently lift the cable to avoid damage to the cable or the connector.

## Step 7



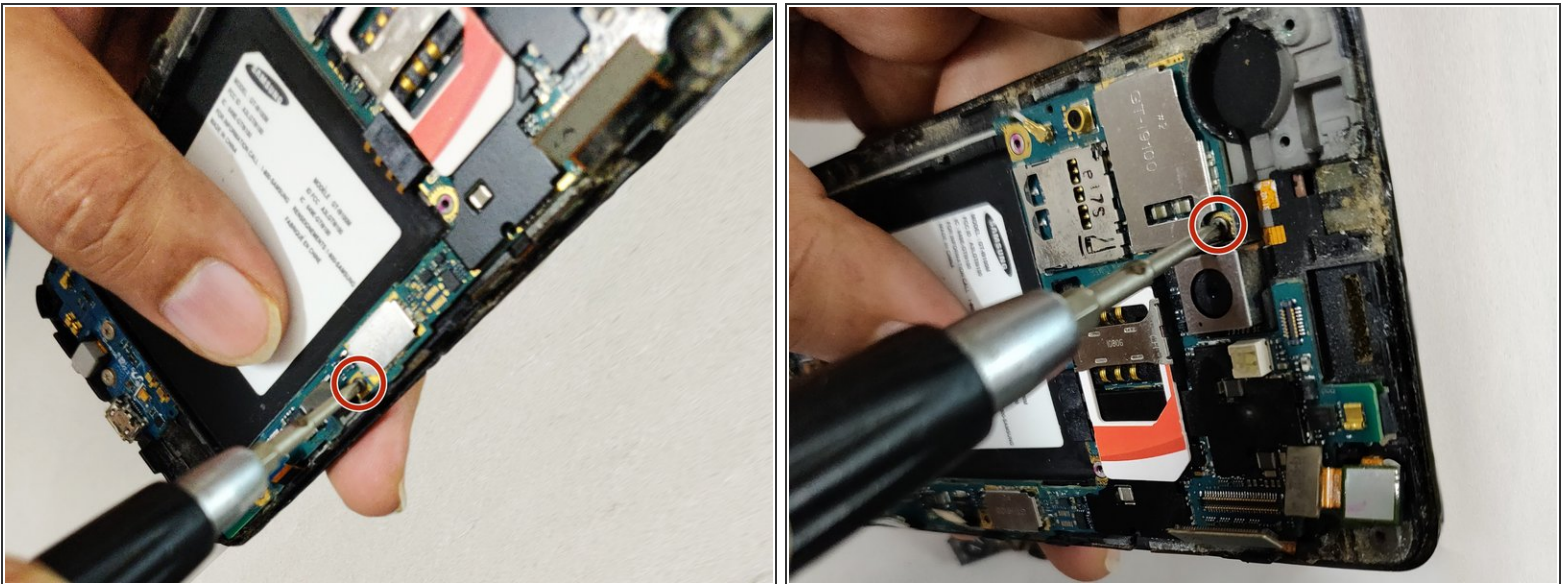
- Use a screwdriver to gently lift the speaker which is fixed to the base with double side tape.
- Gently lift the earpiece using a flat screwdriver.

## Step 8



- Unplug the secondary camera connector carefully and lift the cable.
  - Then unplug the connector that receives the input from the screen.
  - Remove the connection for the charging port using a screw driver.
- i** Handle carefully to avoid tearing off the cable.

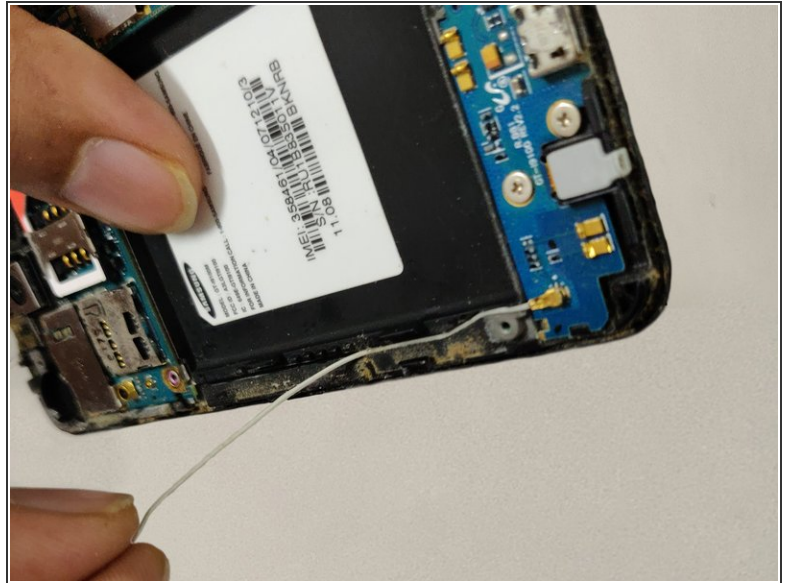
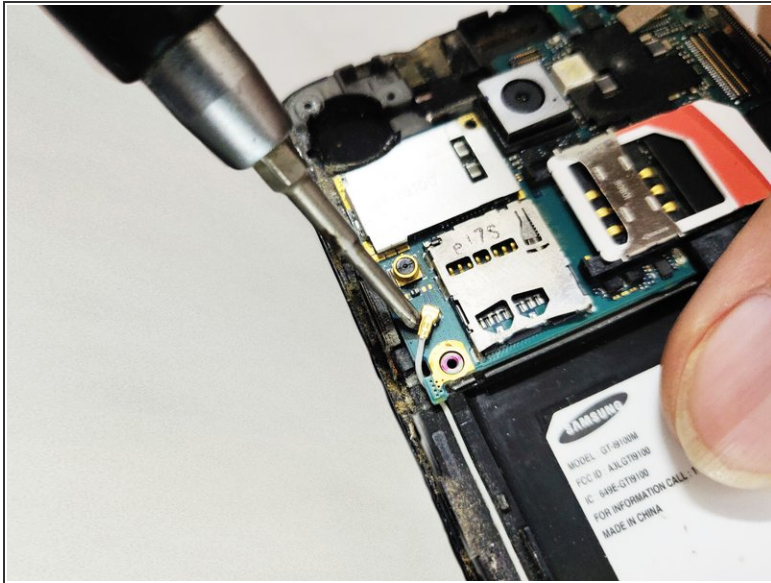
## Step 9



- Remove the two 1.6 mm black head screws using the Phillips #00 screwdriver.



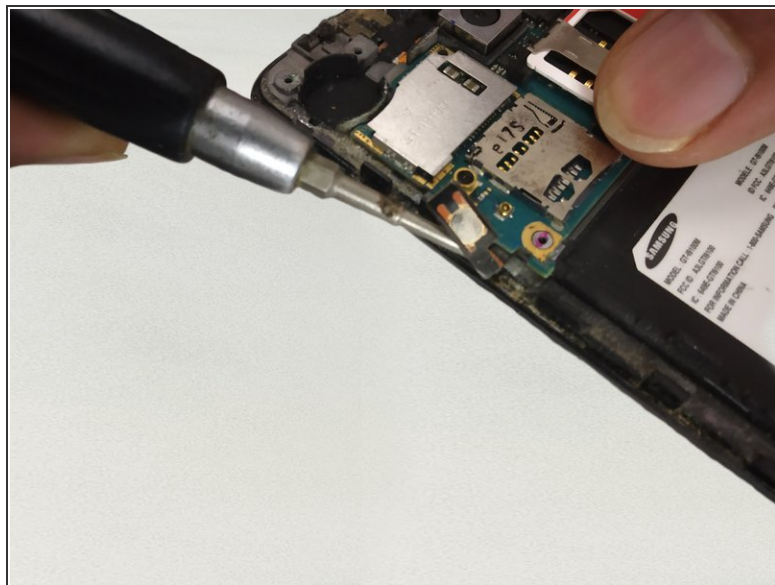
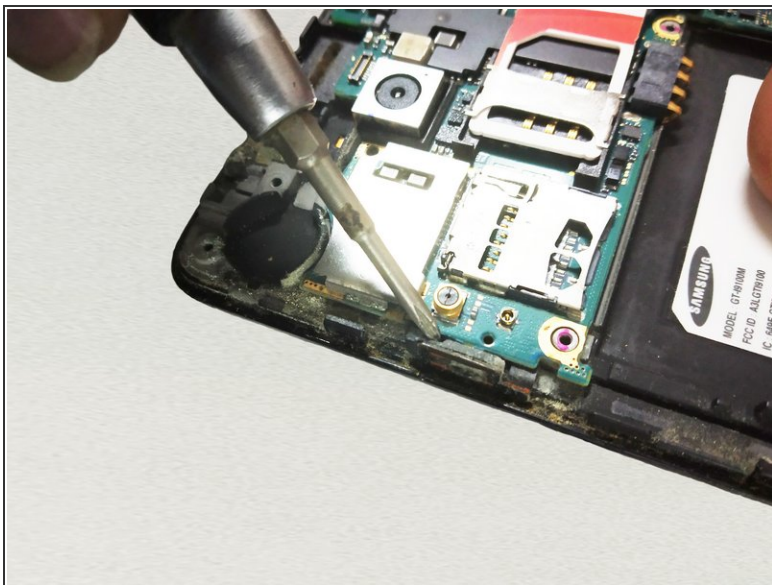
## Step 10



- Disconnect the antennae from both the ends by removing the connections using flat screwdriver.
- Carefully pull out the antennae cable from the slot.

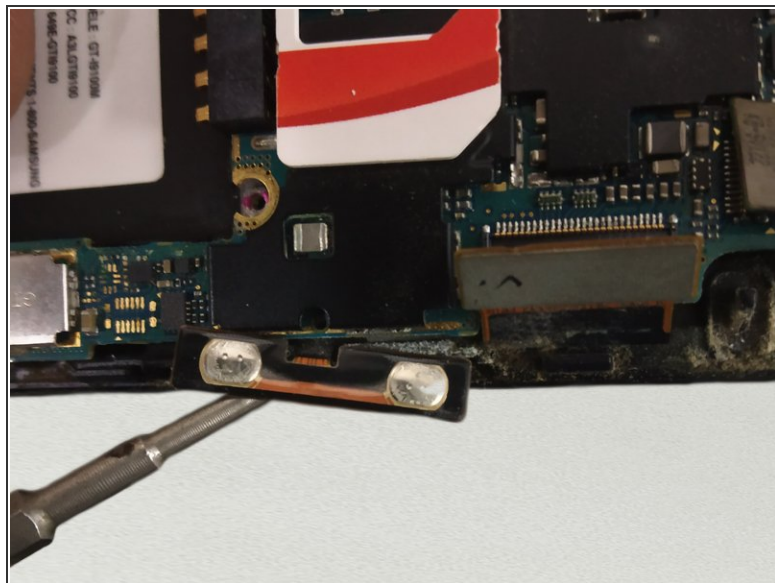
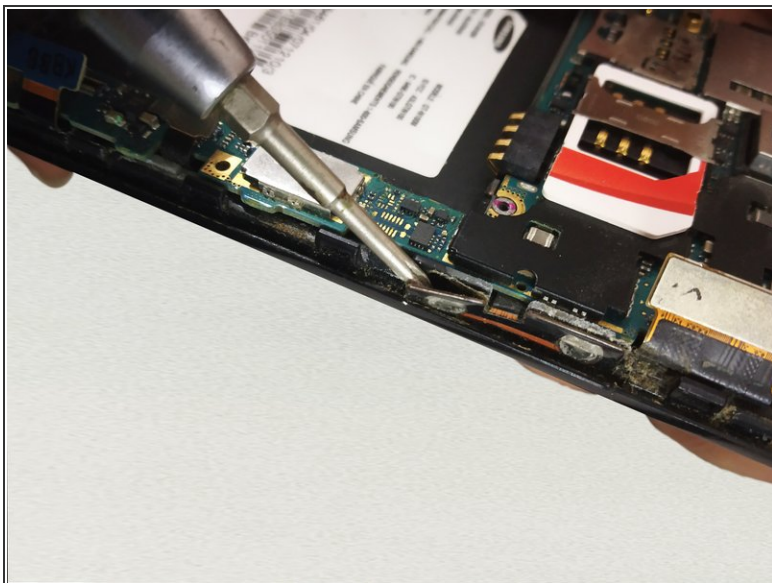


## Step 11



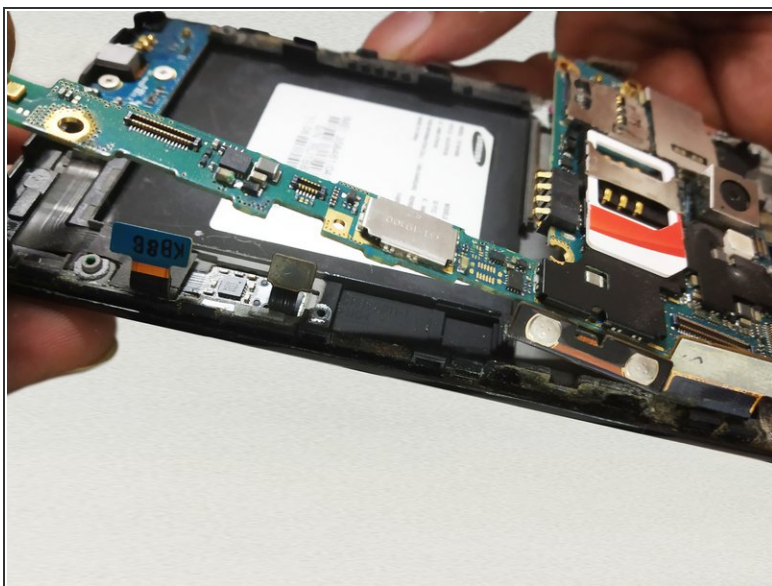
- Gently peel off the power button fixed with double adhesive tape.
  - Carefully lift the button out of the slot.
- i** Try to keep the double side tape on the button and handle the cable carefully to avoid tearing the ribbon.

## Step 12 — Disassemble volume up/down button



- Repeat the same procedure from step 15 to remove the volume up down button.

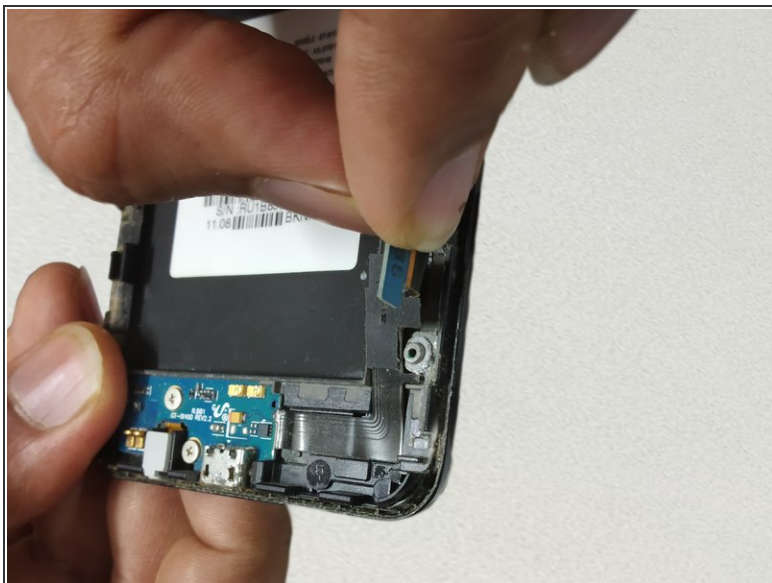
## Step 13 — Remove main board



- Now the main board is free. Carefully lift it up and place on the workbench gently.



## Step 14 — Lift charging port connecting cable



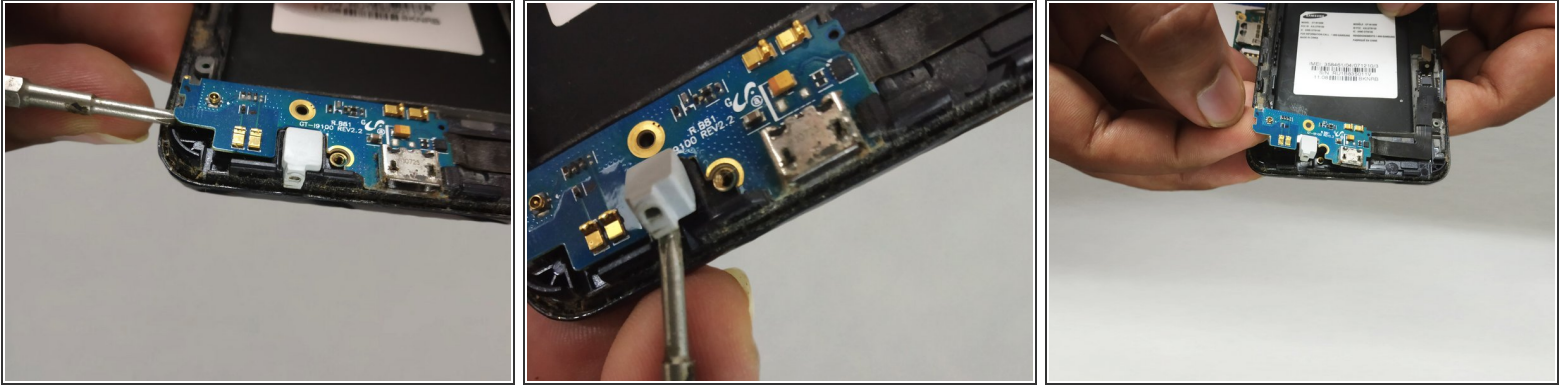
- Peel off the ribbon cable connecting the charging port and microphone by hand.

## Step 15 — Unscrew charging module



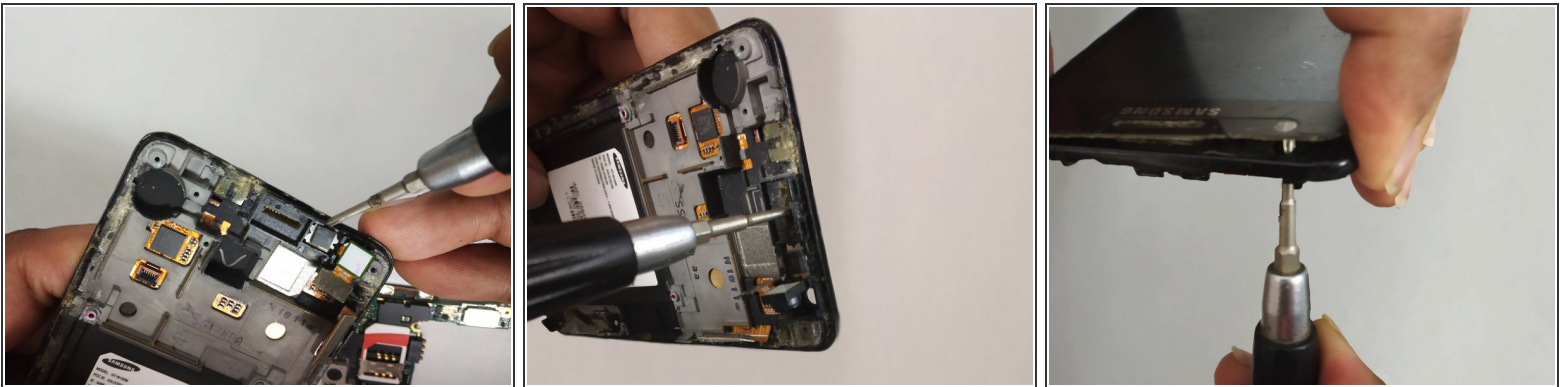
- Remove the two 2.0 mm screws using the Phillips #0 screwdriver.

## Step 16 — Disassemble charging port module



- Lift the microphone gently.
- Lift the board out from the metal casing and place on the workbench.

## Step 17 — Remove screen and replace with new screen



- Finally push the screen out applying force through the screwdriver at the highlighted locations.
- Take out the screen, clean the remaining double side tape and adhesive.
- Install the new screen and follow the same steps in reverse order to re assemble the phone.

To reassemble your device, follow these instructions in reverse order.