



# 2001-2006 Mini Cooper Radio Replacement

This guide shows how to replace the radio in an 2001-2006 R50/52/53 Mini Cooper.

Written By: David Olson



---

## INTRODUCTION

If the radio in your first generation Mini Cooper (R50/52/53) has stopped working or you want to put in an aftermarket radio, this guide will show you how to remove the factory radio. There are no special skills required to do so. Some of the plastic dash panels may be older and more brittle, so be careful when pulling them. NOTE: If you're putting in an aftermarket radio and want to retain the steering wheel controls, you need to make sure you buy an adapter kit.

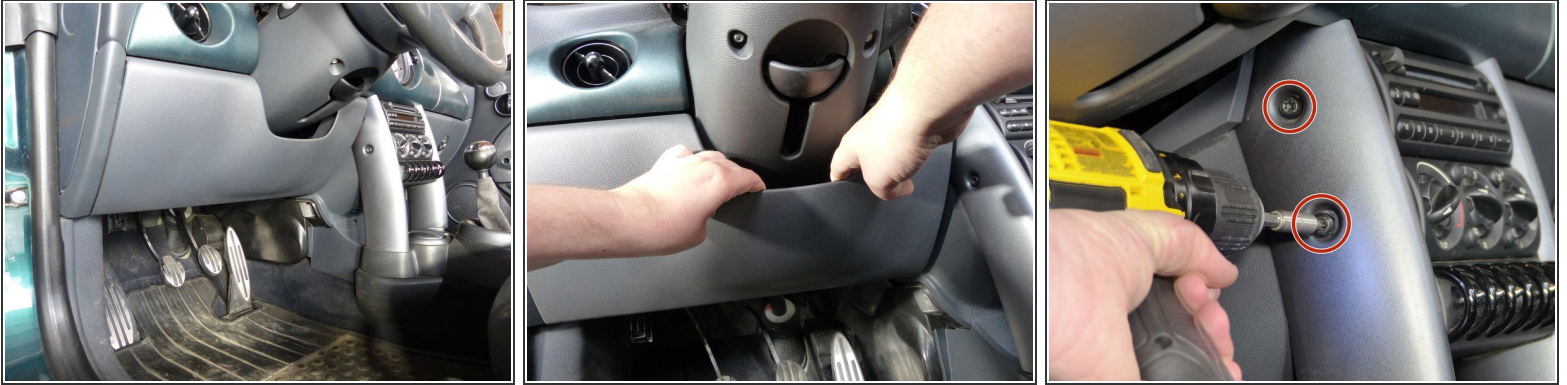


### TOOLS:

- [T20 Torx Screwdriver](#) (1)
  - [T30 Torx Driver](#) (1)
-



## Step 1 — Radio / Head Unit



- Grab the knee bolster panel under the steering column with both hands.
- Pull it down and out.
- Using a Torx screwdriver with T30 tip, remove the two M5 x 2.5 x 25 screws in the left pillar.

## Step 2



- Open the glovebox.
- Using a Torx screwdriver with a T20 tip, remove the two M5 x 2.5 x 30 screws in the right hand side pillar.
- ❗ Minis in America will usually have a cup holder attached with these 2 screws on the right. It will come off when the 2 screws are removed and can be set to the side.

### Step 3



- With the glovebox still open, grab the bottom of the passenger dash panel and pull it forward. The panel does not need to be removed, just popped out.
- Grab under the driver side dash panel near the radio and pull it forward. Again, the panel does not need to be removed, just popped out.
- Pull each side of the middle dash panel until it pops out, like the previous ones.

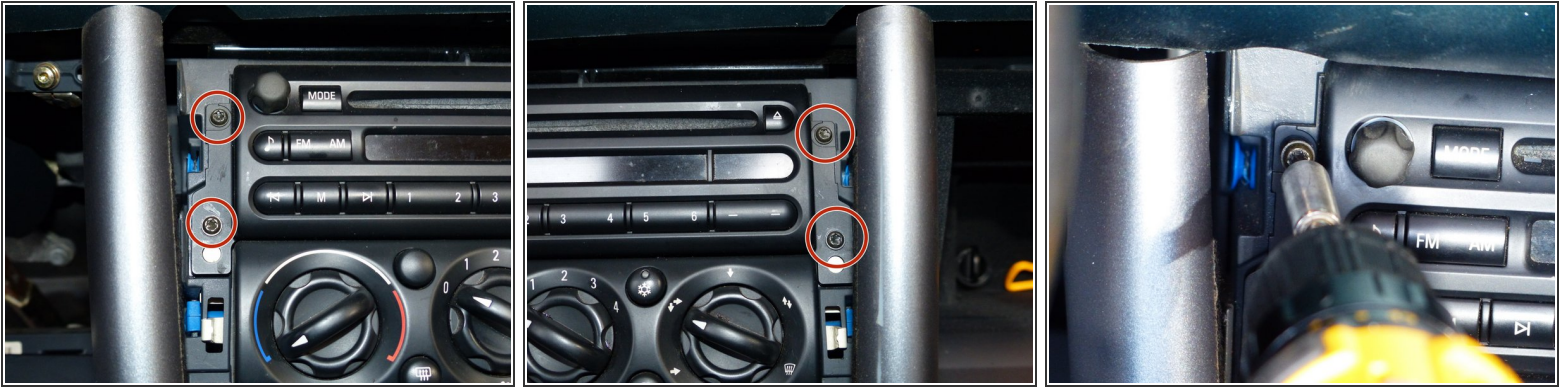
### Step 4



- Grab the left hand side pillar, then pull it out and to the left.
- Grab the right hand side pillar, then pull it out and to the right.
- The four screws holding the radio in should now be exposed.

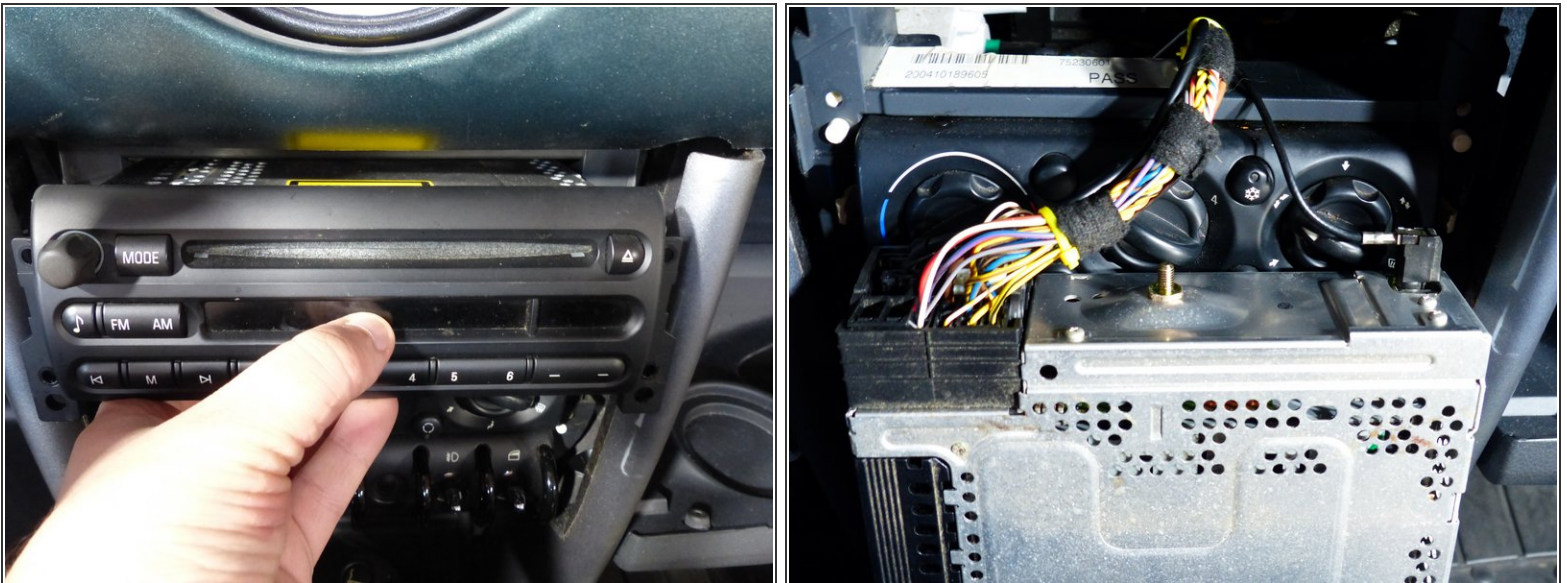


## Step 5



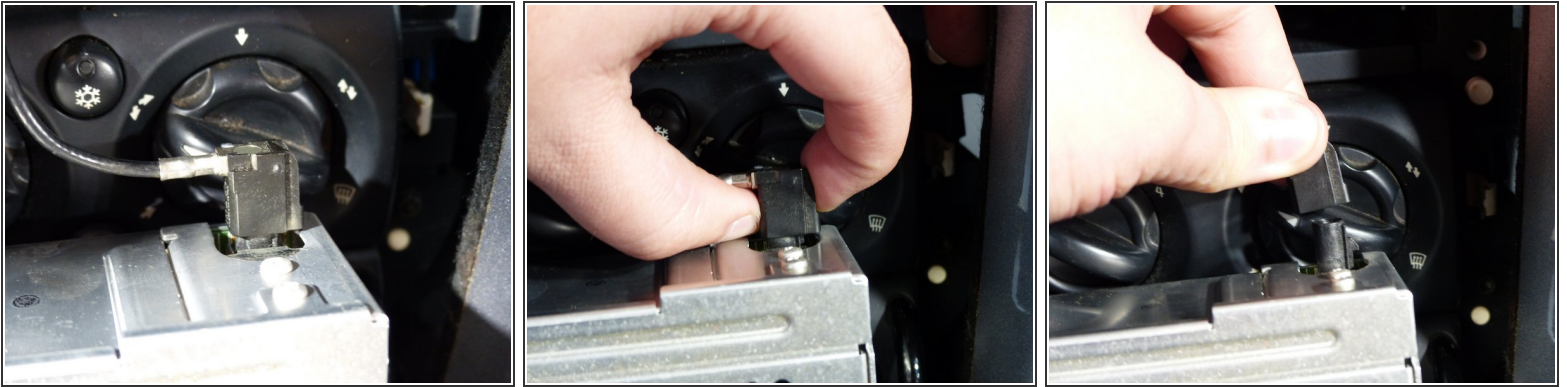
- Using a screwdriver with a T20 bit, take out the four M3 x 2 x 20 screws holding the radio in place.

## Step 6



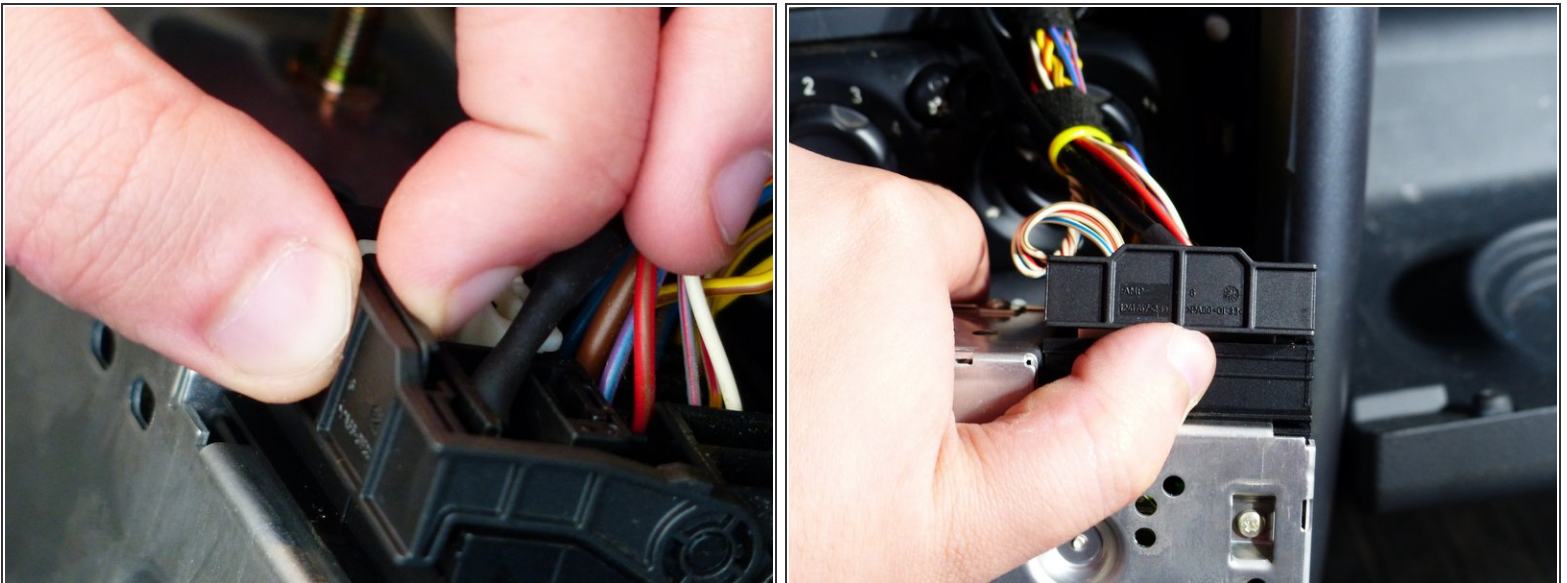
- Grab the radio and gently pull it out of the dash.

## Step 7



- Pinch the antenna connector and pull it straight out.

## Step 8



- For the main connector, pinch the lever arm with the piece of plastic next to it.
- Lift up on the arm and pull the connector out.
- The radio can now be removed from the car.

To reassemble your device, follow these instructions in reverse order.