



Garmin Nuvi 2529 Disassembly

This guide will help you disassemble the device to expose all the components and parts.

Written By: honakrisi





TOOLS:

- [T5 Torx Screwdriver](#) (1)
- [Pry Bar](#) (1)
- [iFixit Opening Tools](#) (1)
- [Soldering Iron](#) (1)
- [Tweezers](#) (1)
- [Spudger](#) (1)

Step 1 — Removing screws from back cover



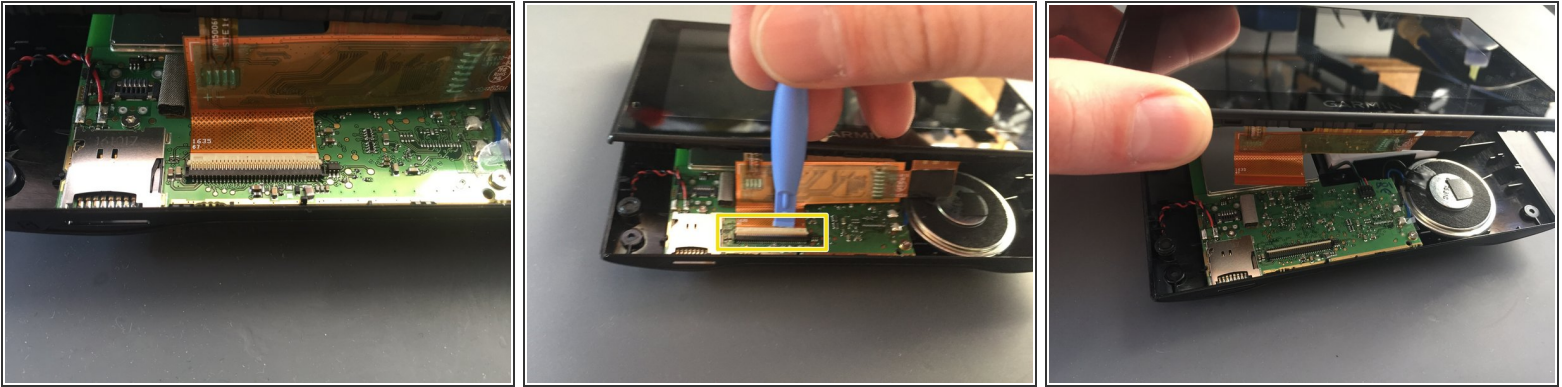
- Turn the device over and remove the 4 x T5 screws.

Step 2 — Prying off the back cover



- Use the prying tool to release the plastic clips on the back, going around all the sides.
 - Start prying from the sides or the top left corner and work your way around the screen.
- ⚠ Be careful at the bottom as the screen connector is still attached. Don't try to fully remove it.
- Slide the screen slightly upwards to reveal the connector

Step 3 — Disconnecting the screen connector



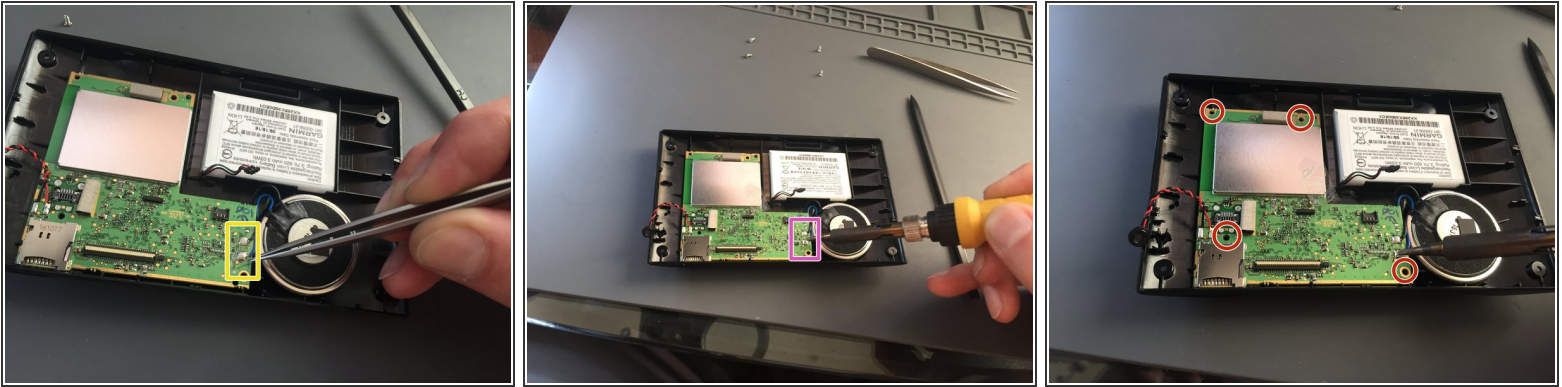
- Slide up the screen to get access to the connector
- Use the plastic prying tool to lift up the latch that secures the ribbon cable and then slide the cable out.
- Once the cable is out, lift off the screen.

Step 4 — Disconnecting the battery and microphone



- Before you can take the logic board out disconnect the battery.
- Remove the microphone from its socket with a plastic spudger.
- Remove the 4 x T5 screws that secures the logic board to the back cover.

Step 5 — Desoldering the speakers



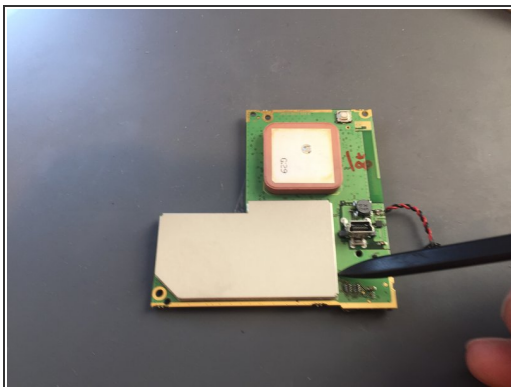
- Peel off the clear tape from the speaker connections with tweezers.
- Use your soldering iron to de-solder the two wires from the speaker.
- ⓘ Try to minimise the contact time with your iron on the board to avoid warping and thermal shocking the board. (I used 390 C ~ 740 F)
- Finally remove the 4 x T5 screws that secure the logic board to the back cover.

Step 6 — Removing the logic board from back cover



- Use the spudger to pop the lociboard out.

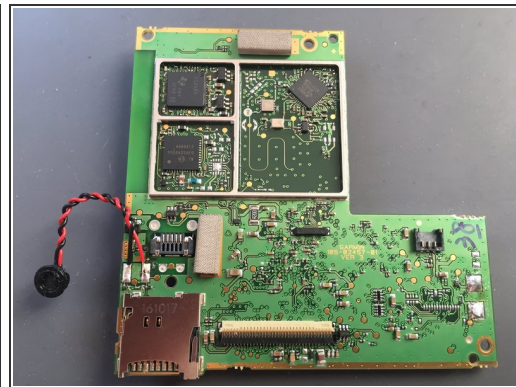
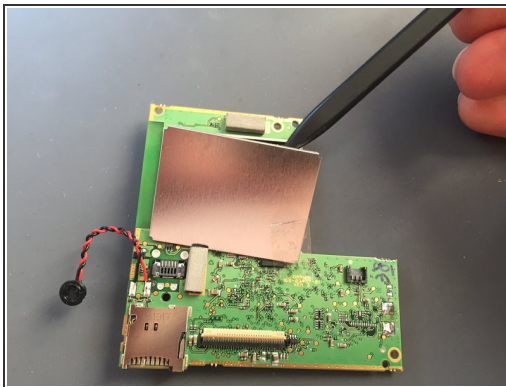
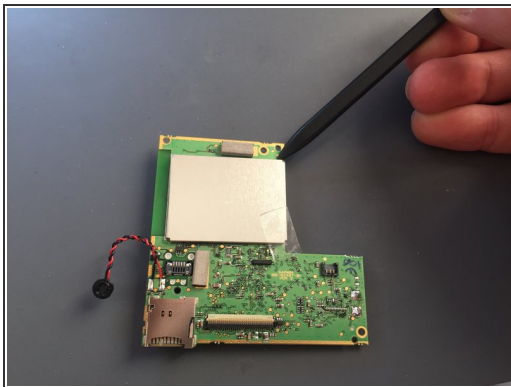
Step 7 — Exposing all components pt. 1



- To reveal all the components, use the spudger to lift off the metal cover of the protected circuitry

⚠ Make sure you apply even pressure and don't force the cover off. If it is bent whilst removing, it will be difficult to reassemble.

Step 8 — Exposing all components pt. 2



- Repeat the same step on the back of the logic board.
- Now you successfully exposed all the parts.

To reassemble your device, follow these instructions in reverse order.