



Samsung Galaxy Tab S 10.5 Display Replacement

If your display is showing any dead pixels or...

Written By: Treyvon Akeeme Sumpter



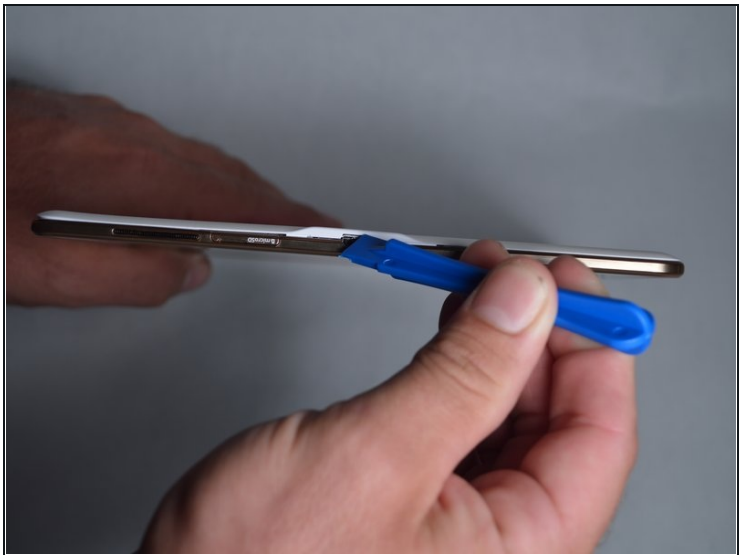
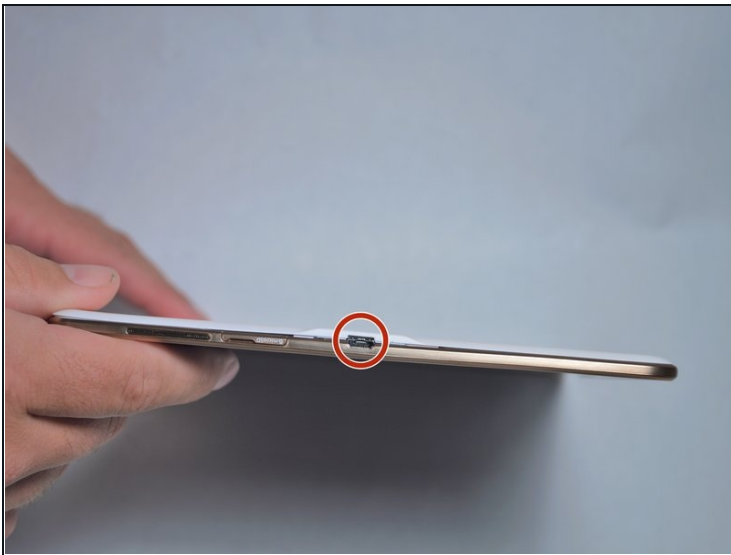
INTRODUCTION

If your display is showing any dead pixels or if the color of the images are off, you may need to replace the display of your device. Use this guide to replace the display in your device.

TOOLS:

[iFixit Opening Tool](#) (1)
[1 x Opening Picks](#) (1)
[Large Needle Nose Pliers](#) (1)
[Phillips #00 Screwdriver](#) (1)
[Phillips #000 Screwdriver](#) (1)
[Tweezers](#) (1)
[Spudger](#) (1)
[Metal Spudger](#) (1)

Step 1 — Disassembling Galaxy Tab S 10.5 Back Cover



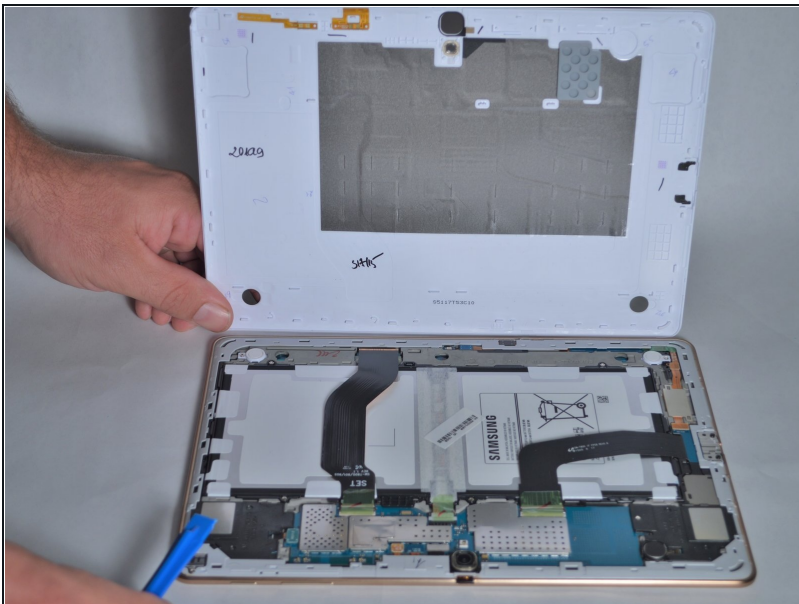
- Place the plastic opening tool into the SD card slot or charge port.
- Try in an upward motion until you see a separation between the tablet and back cover.

Step 2



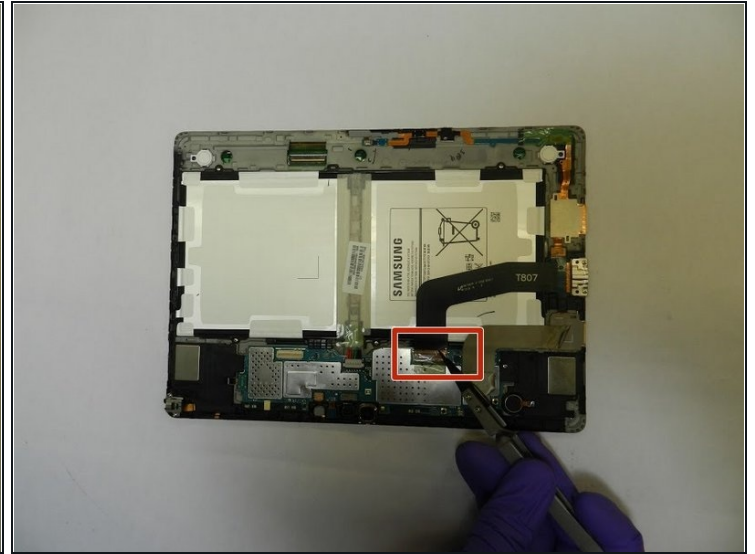
- Work around the entire device by sliding the plastic opening tool around the rim.
- ⓘ If this is the first time, it will be hard to separate the back cover from the tablet.
- ⓘ The clips are approximately 5 cm apart. While working around the device, the clips will make a dislocating sound when disconnected.

Step 3



- Remove the back cover once all links have been separated.
- ⚠ Be careful when touching any of the internal components of the tablet.

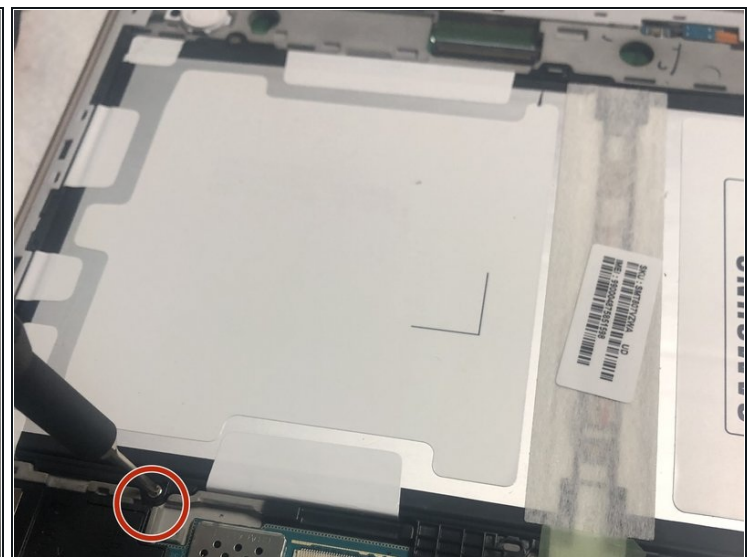
Step 4 — Display



- After taking off the back cover, use a pair of [tweezers](#) to disconnect the two (T807) ribbons.

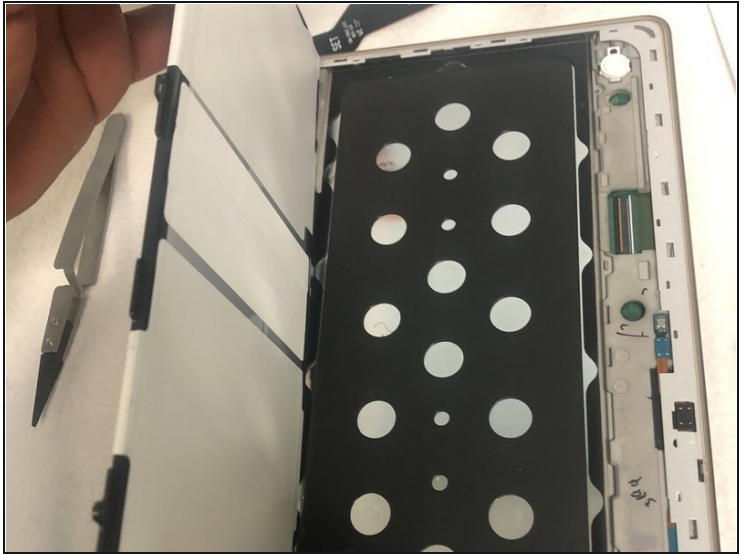
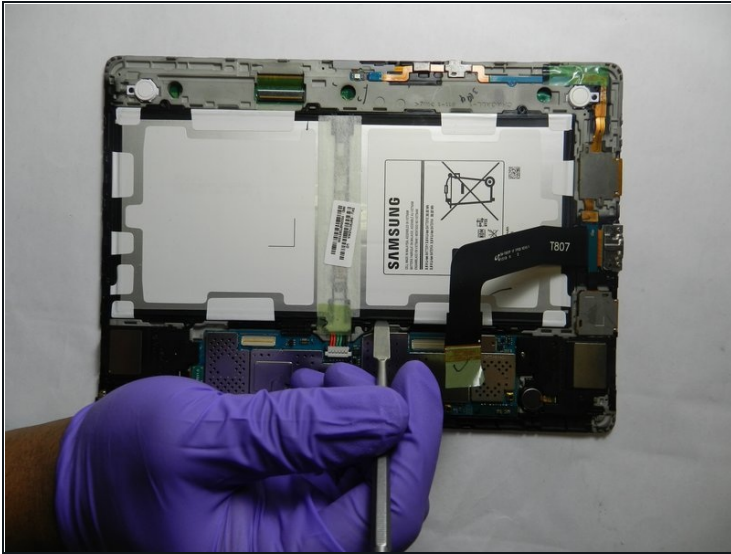
⚠ Warning : Ribbon cables are connected with [ZIF connectors](#) (Zero Insertion Force): it requires a special sequence with rotation of a plastic lever to release the pressure on contacts. Then ribbon cable can be extracted without any damage.

Step 5



- Remove the four screws holding down the battery using the Phillips #000 screwdriver.

Step 6



- Remove the battery using a spudger.

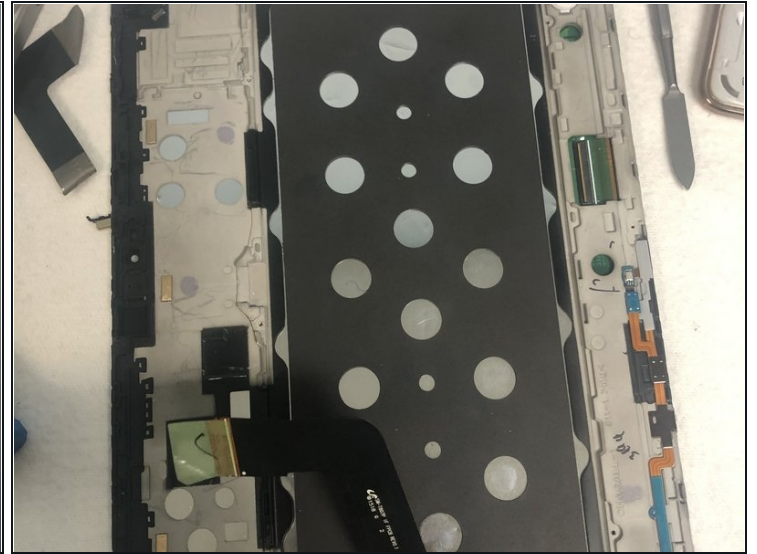
⚠ Do not use a metal spudger on the inner components of your device. The metal spudger should only be used for serious prying power as it can damage the inner components of your device.

Step 7



- Use a Phillips #00 screwdriver to remove the screw holding the motherboard.

Step 8



- Disconnect the motherboard and remove it from the device using the spudger.
- ① The remainder of the device is the entire display assembly.

To reassemble your device, follow these instructions in reverse order.