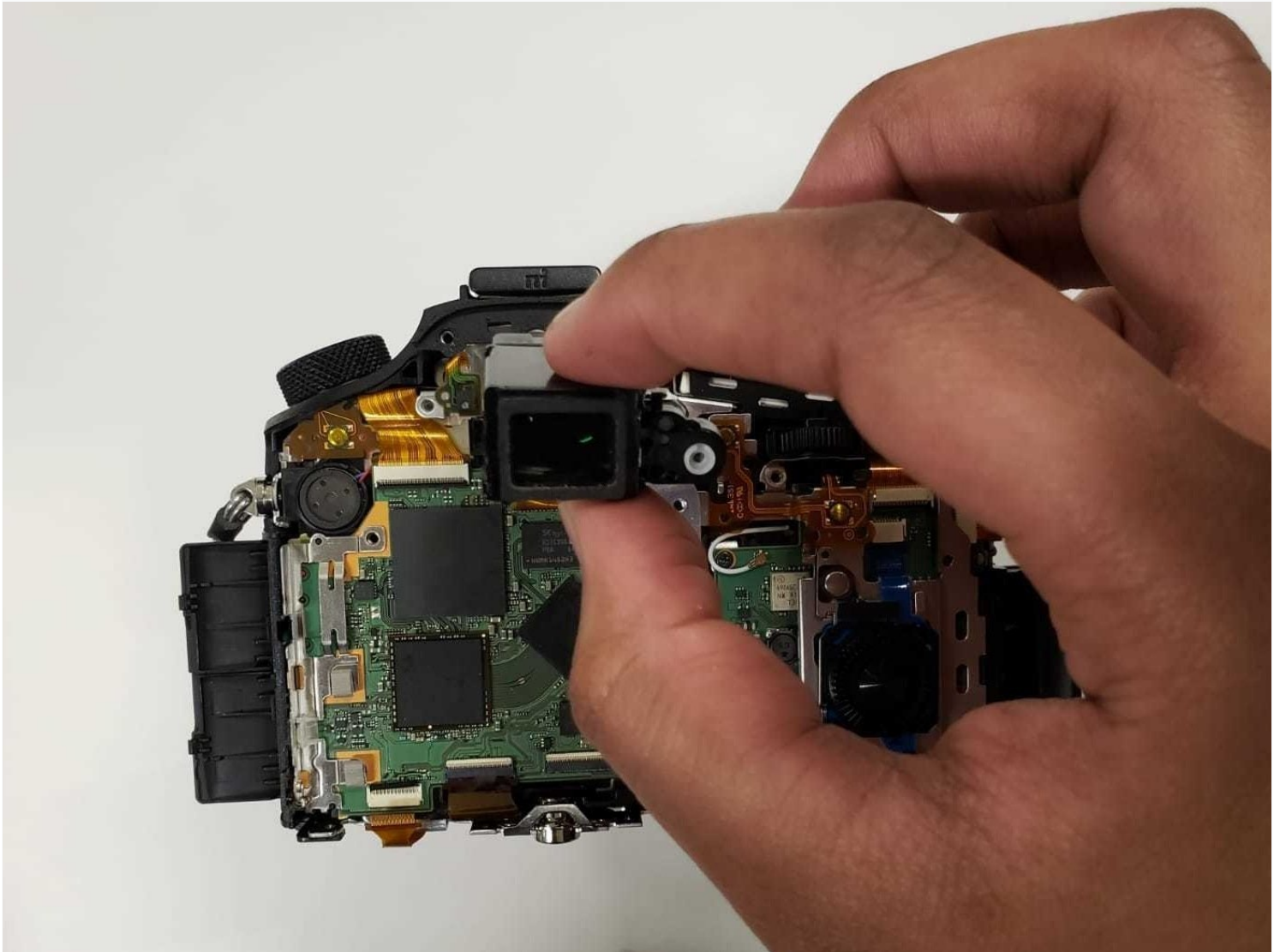




# Sony DSC-RX10M3 Viewfinder Replacement

If your Sony DSC-RX10M3 is not displaying...

Written By: Salman Hersi



# INTRODUCTION

If your Sony DSC-RX10M3 is not displaying accurate pictures, this guide will help you replace the viewfinder, which is the component that you look through when trying to capture a shot. You will need to completely remove the back panel of the camera before proceeding to replace the viewfinder. It is important that you are wary of the ribbon cable in the last step and make sure that you don't apply too much pressure or it might cause damage. There are a lot of screws in this device, and it's recommended that you use iFixit's magnetic project mat to place your screws in.

**For this guide, you are not required to remove the side panel in step 6.**

## TOOLS:

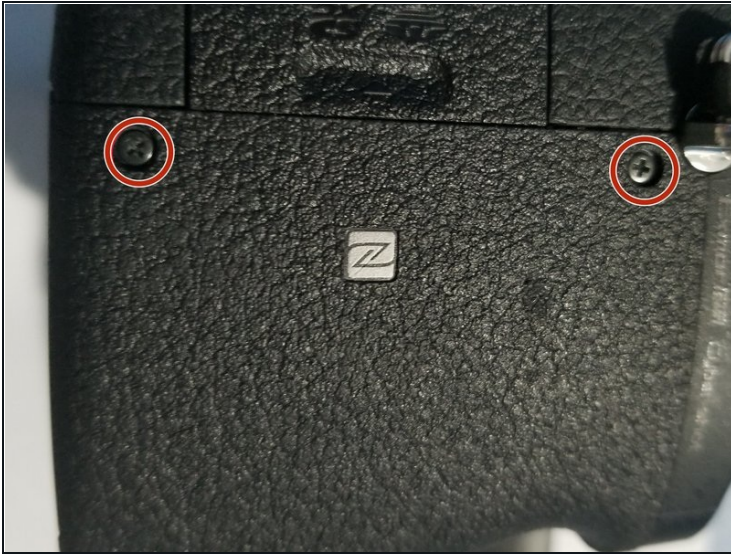
[iFixit Tweezers](#) (1)  
[iFixit Opening Picks \(Set of 6\)](#) (1)  
[Phillips #000 Screwdriver](#) (1)  
[iFixit Opening Tool](#) (1)  
[Tweezers](#) (1)

## Step 1 — Back and Right Panel



- Remove the twelve 0.7mm Phillips #000 screws from the bottom case.

## Step 2



- Remove the two 0.7mm screws that secure the right side of the camera.
- Remove the two 0.7mm screws that secure the left side of the camera, near the Wi-Fi logo and charging port.

## Step 3



- Gently pull off the plastic eye guard.



## Step 4



- Use a Phillips #000 screwdriver to remove the four 0.4mm screws located under the rubber eye guard.
- Use a plastic opening tool to detach the back panel of the camera.

## Step 5



⚠ This is a tight spot; make sure you use minimal force when removing the cover.

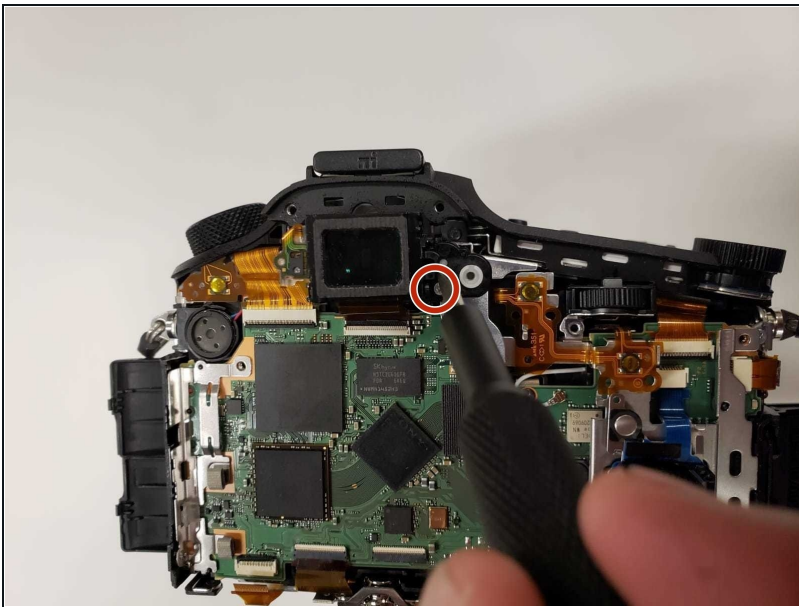
- Using [tweezers](#), disconnect the ribbon cable connecting the LCD to the circuit board.

## Step 6



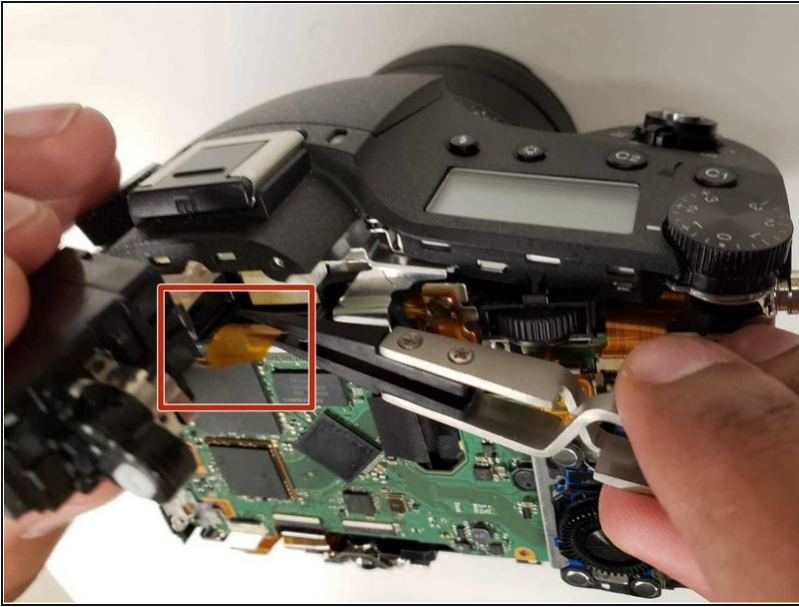
- ① This step is only needed if you wish to remove the right side panel.
- Use a plastic opening tool to gently detach the right panel.

## Step 7 — Viewfinder



- Using a Phillips #000 screwdriver, remove the silver 0.5mm screw.

## Step 8



- Use [tweezers](#) to detach the ribbon cable from the motherboard.
- ⓘ Use upward force when removing the ribbon cable.

---

To reassemble your device, follow these instructions in reverse order.