



Sony a7 LCD Screen Replacement

This replacement guide will address how to...

Written By: Jeffrey Coleman



INTRODUCTION

This replacement guide will address how to remove a faulty LCD screen from a Sony a7 model number ILCE-7 camera. The LCD screen is an essential part of the camera that allows the user to review pictures or access the settings menu and edit the photography quality settings. Here are the steps for you to replace the LCD screen.

If the camera screen turns black, or the screen is unresponsive to commands, then the LCD screen of the camera may have failed. Before proceeding, it may be helpful to refer to the [troubleshooting](#) page, which can help mitigate any easy to remedy problems before going through the LCD screen removal process.

Helpful Hint: The LCD screen is made of glass, therefore it is fragile. Handle it with caution.

TOOLS:

[Phillips #00 Screwdriver](#) (1)

[Tweezers](#) (1)

[iFixit Opening Tool](#) (1)

Step 1 — Battery



- Flip the camera upside down, and observe where the battery door and switch are located on the camera.
- ☑ This replacement guide is using a cardboard and tape placeholder to simulate the battery, battery door, and switch.

Step 2



- Slide the switch over to the right side to open the battery door.

★ This replacement guide is using a cardboard and tape placeholder to simulate the battery, battery door, and switch.

Step 3



- Depress the blue lever to allow the battery to pop out slightly.

★ This replacement guide is using a cardboard and tape placeholder to simulate the battery, battery door, and switch.

Step 4



- Remove the battery from the camera.
- ⓘ Make sure to hold onto the battery firmly when removing it from the camera, as it could slide out and fall.
- ★ This replacement guide is using a cardboard and tape placeholder to simulate the battery, battery door, and switch.

Step 5 — Rear Disassembly



- Remove the eyepiece cover by removing the four M1.5x4mm screws with a PH00 Phillips screwdriver.
- Remove the M1.5x4mm screw that retains the adjustment wheel with a PH00 Phillips screwdriver.

Step 6



- Remove the six M1.5x4mm screws with a PH00 Phillips screwdriver.

Step 7



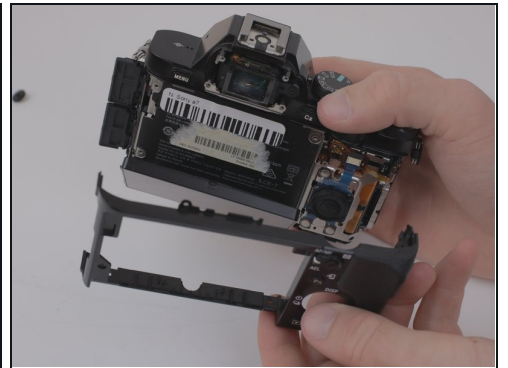
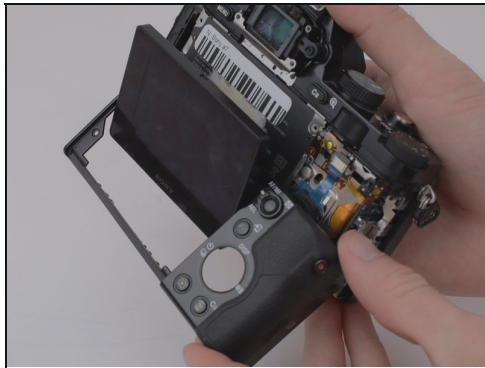
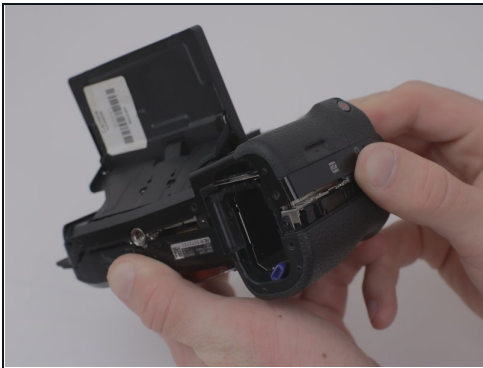
- Remove one M1.5x4mm screw with a PH00 Phillips screwdriver.

Step 8



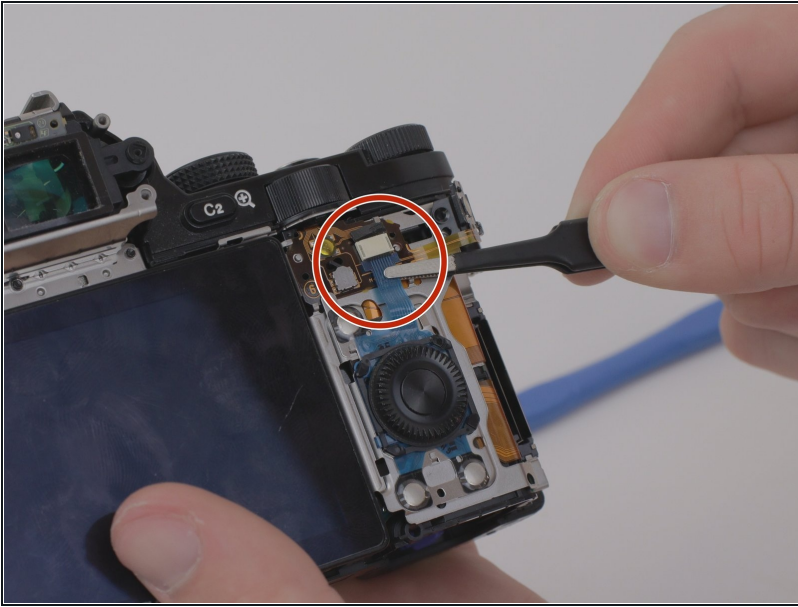
- Remove the four M 1.5x2mm screws.

Step 9



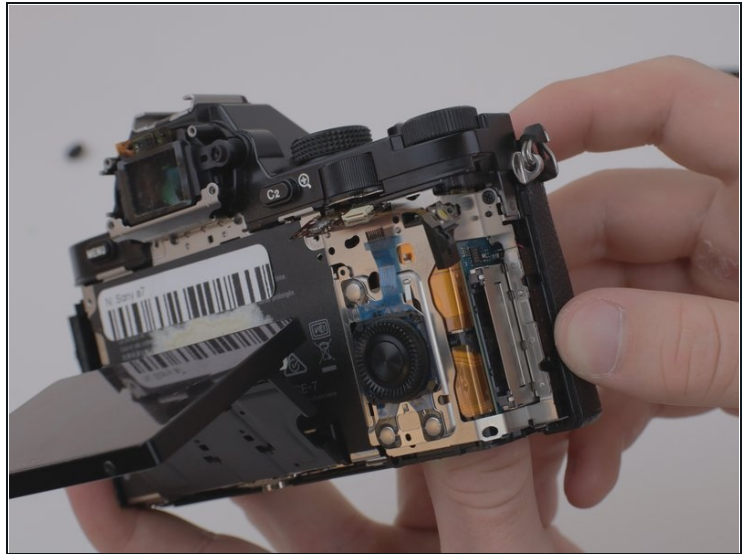
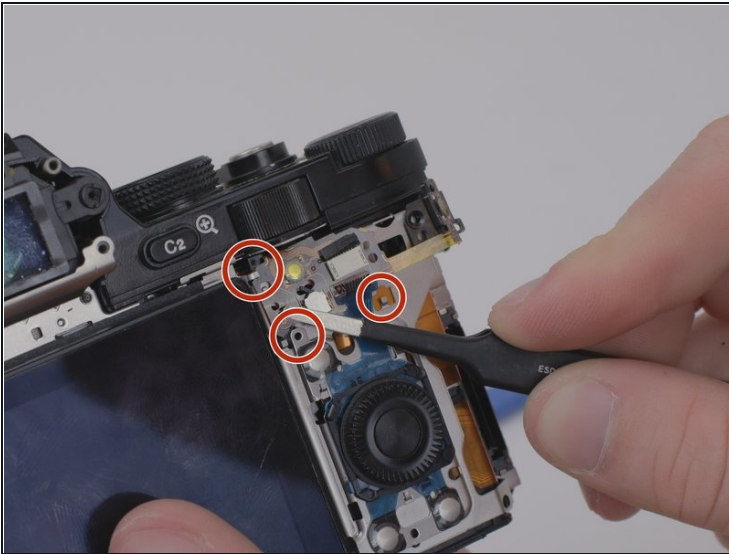
- Once the screws have been removed, unsnap and lift the rear plastic cover off of the camera.

Step 10



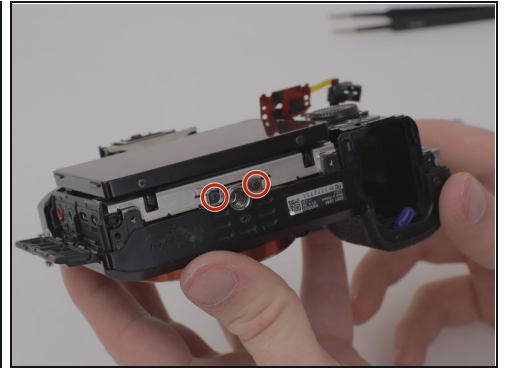
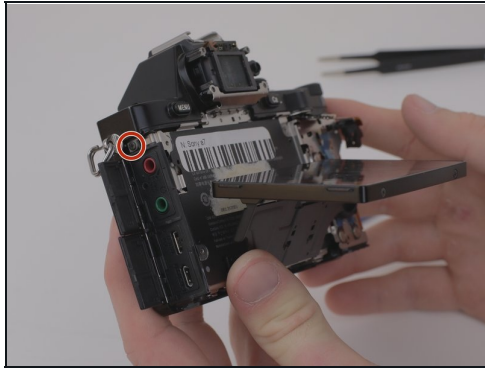
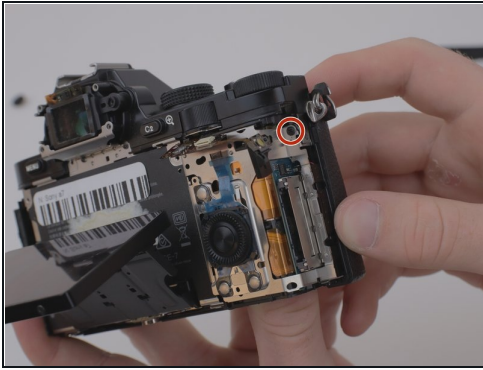
- Using the blunt [tweezers](#), remove the blue ribbon cable.
- ① For additional guidance and tips on how to properly attach and detach connector cables, please reference *iFixit's* guide to connector cables [here](#).

Step 11



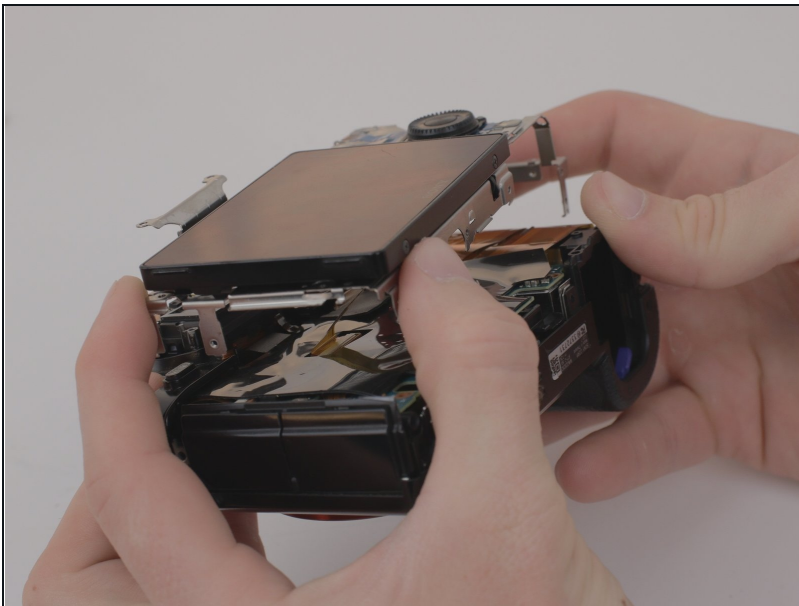
- Place the tweezers on the side of the circuit board and lift it from underneath so as to free it from the three retaining tabs.

Step 12



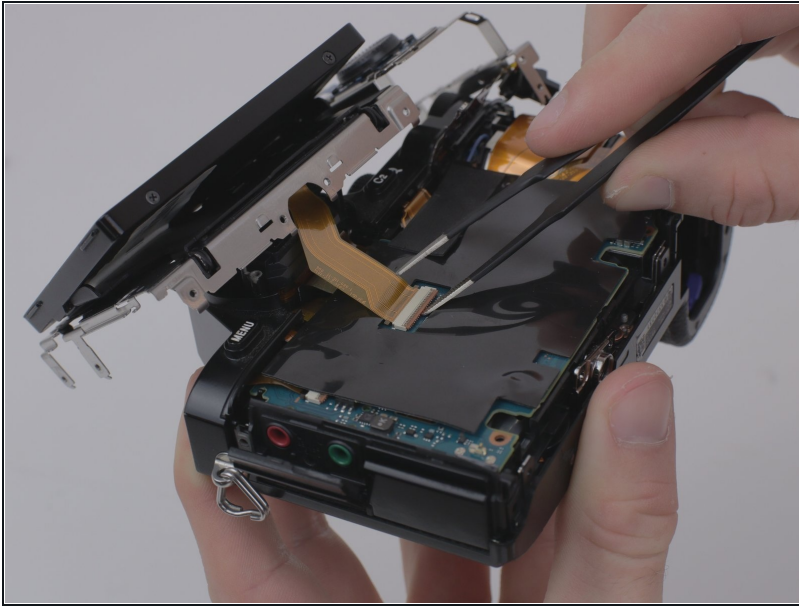
- Remove four M1.5x4mm screws using a PH00 Phillips screwdriver.

Step 13



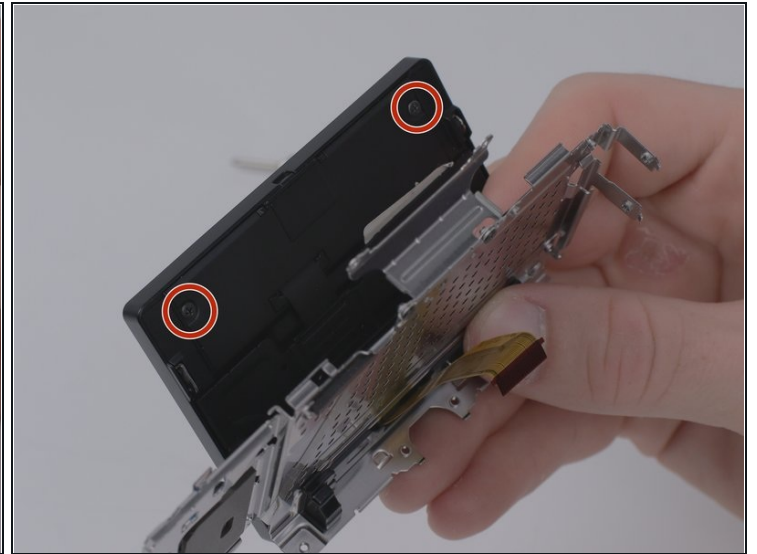
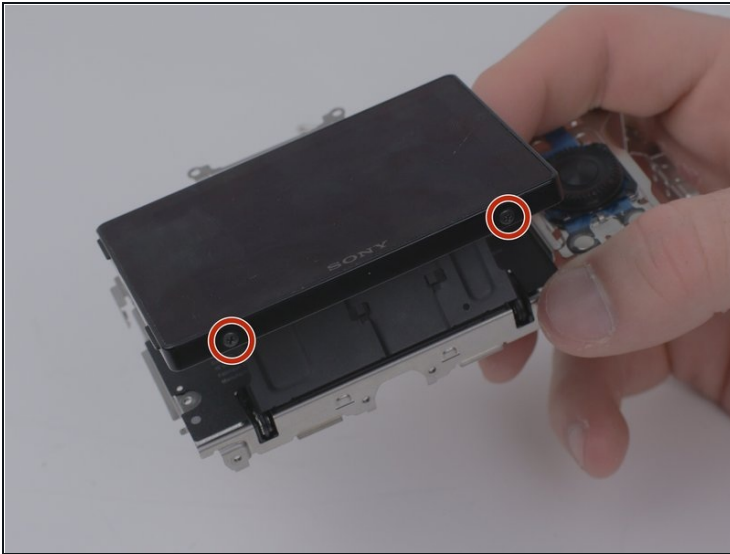
- Lift the metal plate and LCD screen away from the camera body.

Step 14



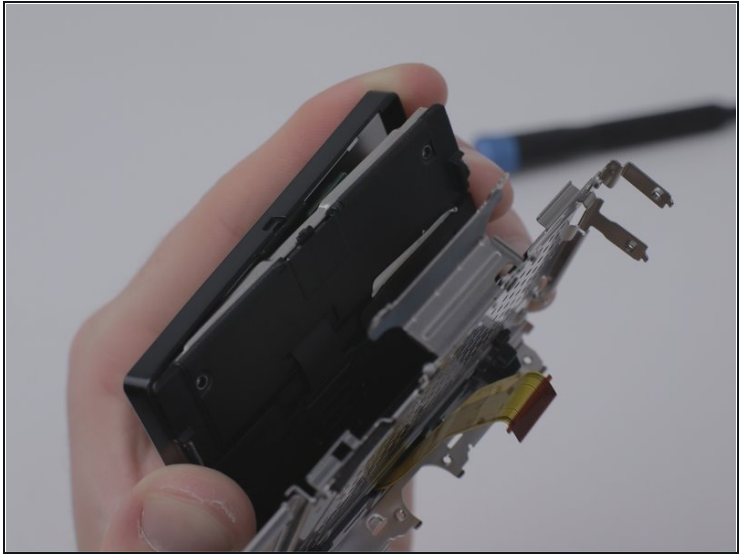
- Detach the amber ribbon cable from the motherboard.
- ⓘ For additional guidance and tips on how to properly attach and detach connector cables, please reference *iFixit's* guide to connector cables [here](#).

Step 15 — LCD Screen



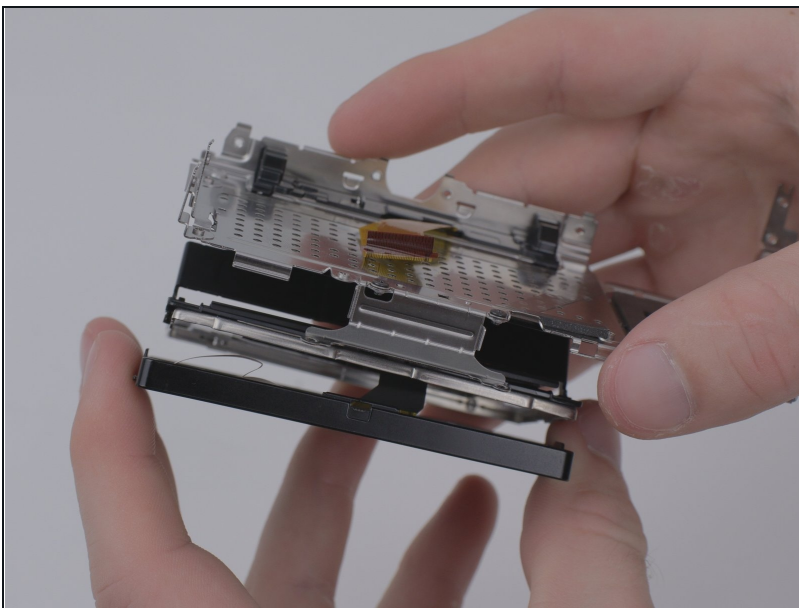
- Remove four M1.5x2mm screws with a PH00 Phillips screwdriver.

Step 16



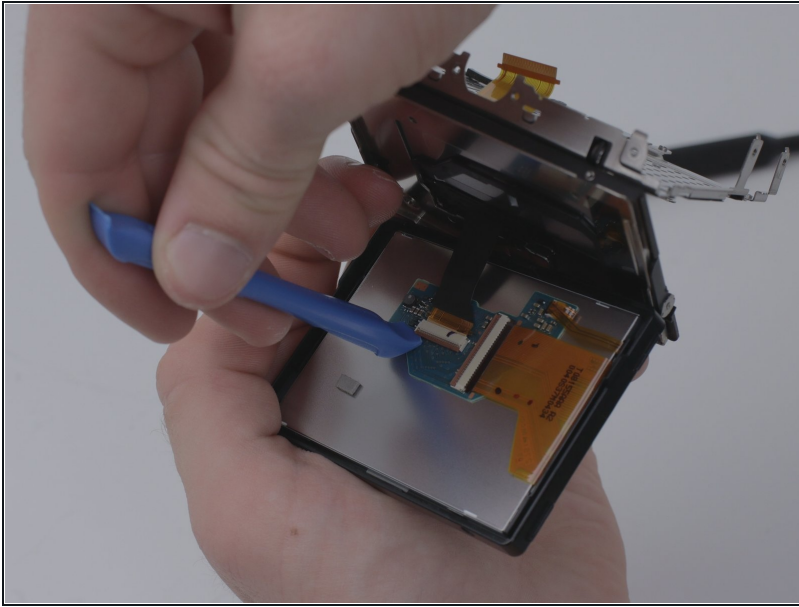
- Using the iFixit opening tools, pry the plastic casing off the back of the LCD screen.
- ① It may be difficult to remove the backing from the LCD, so it does require a fair amount of cautious pressure.

Step 17



- Separate LCD screen from its metal backing.

Step 18



- Remove the ribbon cable that connects the LCD screen to the camera by using the iFixit opening tools.
- ⓘ In order to successfully remove the ribbon cable, it will be necessary to lift up on the connector.

To reassemble your device, follow these instructions in reverse order.