



Akai MPK25 Selector Knob Replacement

This guide explains how to replace the main menu selector knob that is directly to the right of the LCD display.

Written By: Anthony Zepeda



INTRODUCTION

Use this guide if any of the selector knobs get bent, broken, or stops working.



TOOLS:

- [8" Needle Nose Plier](#) (1)
 - [Phillips #2 Screwdriver](#) (1)
 - [Soldering Workstation](#) (1)
 - [Spudger](#) (1)
-

Step 1 — Face Plate



- Remove all the selector knob covers by pulling them off.

Step 2



- Using needle nose pliers, remove the washers from the four corner selector knobs.

Step 3



- Flip the device over. Using a Philips #2 screw driver, remove the fourteen 10.3 mm black screws holding the back panel in place.

Step 4



- Carefully flip the device to the front making sure you secure the face plate and the chassis together.
- ⚠ Please use care in following the step above to avoid ripping the ribbon cables connecting the two sides.

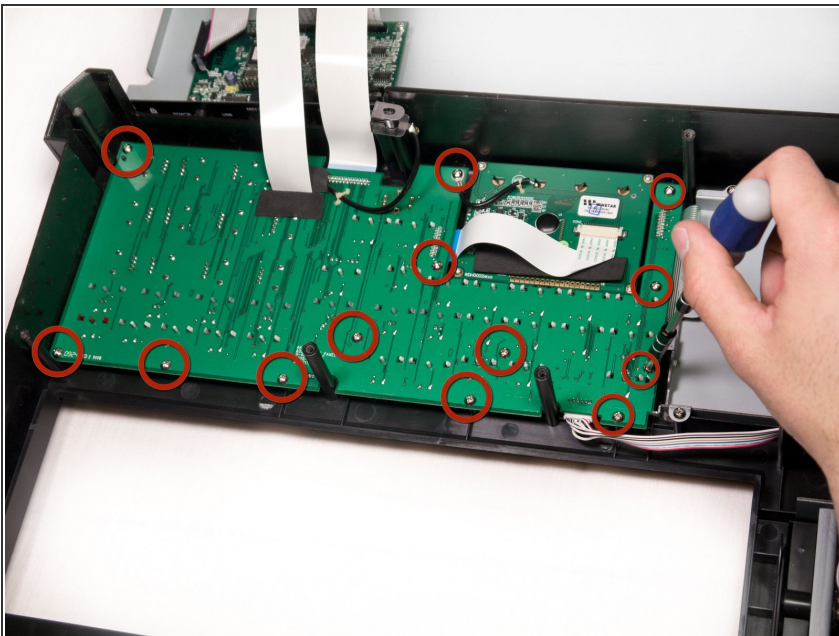
Step 5



- Rotate the device 180 degrees and carefully remove the face plate by slightly lifting the screen side towards you and then sliding the bottom out from under the keys.

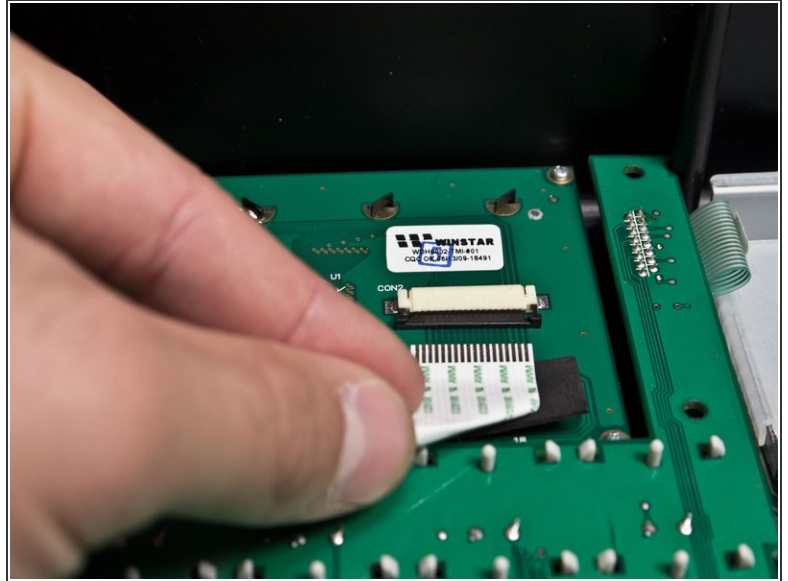
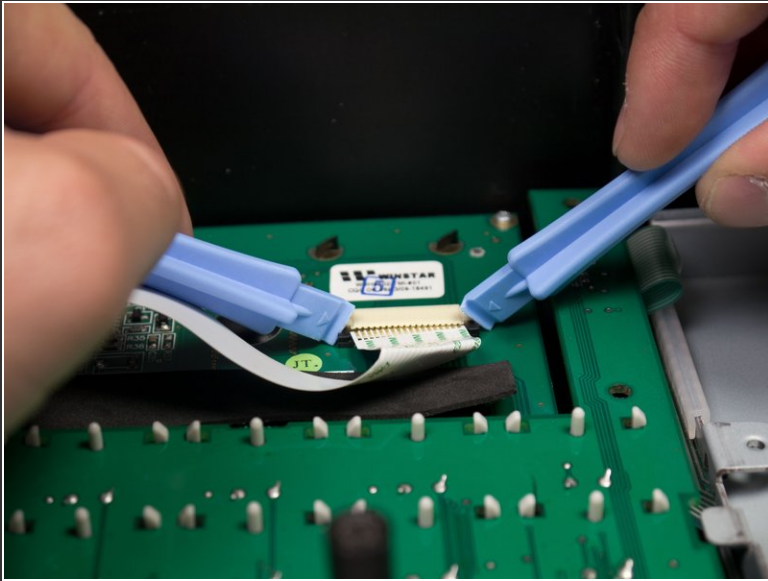
⚠ Use care when doing the step above so that the ribbon connectors which connect the top of the chassis to the top of the face plate are not damaged.

Step 6 — Selector Knob



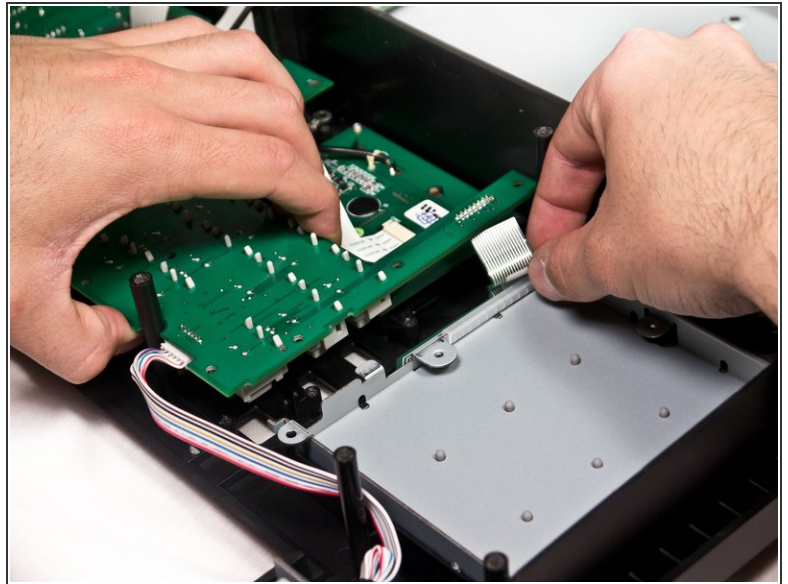
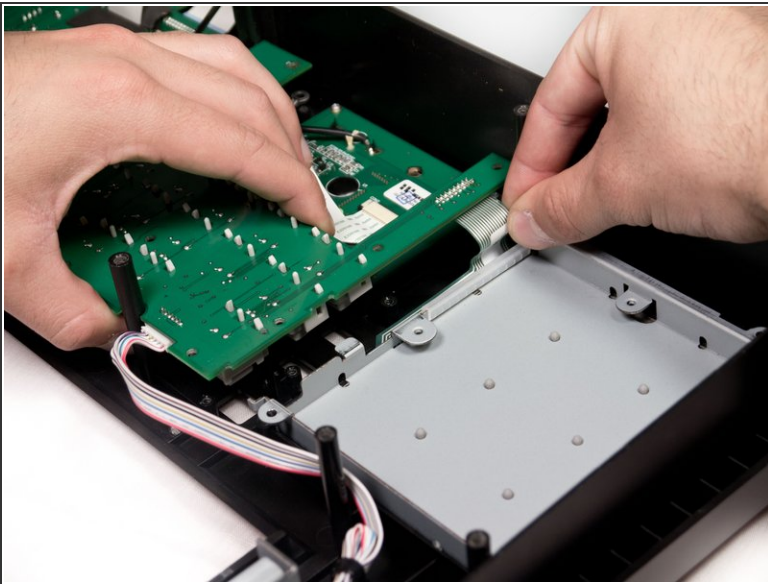
- Using a Phillips #2 screwdriver, remove the thirteen 9.8mm silver screws holding the mother board to the face plate.

Step 7



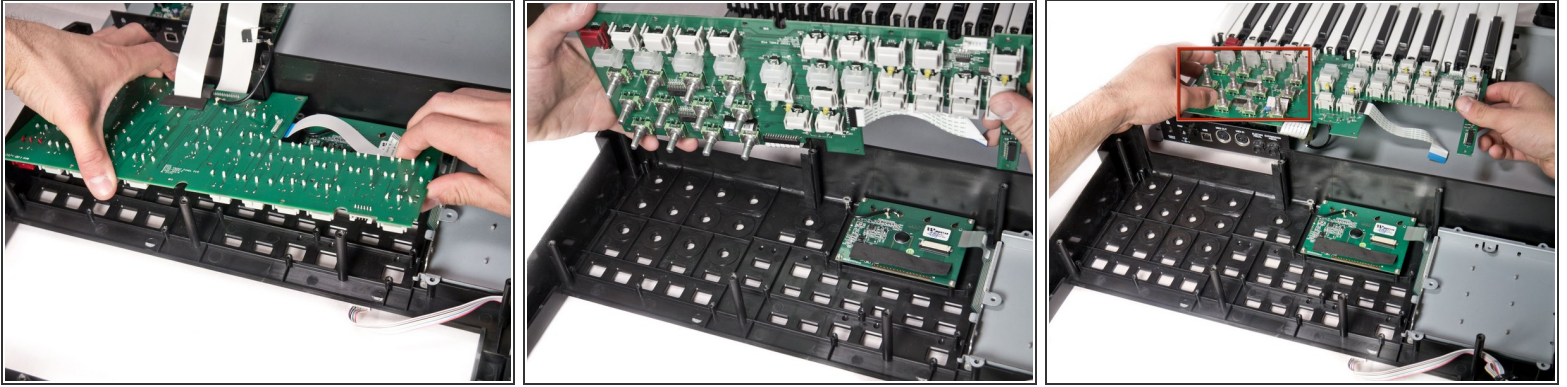
- Using two plastic opening tools, slide the black locking mechanism on the ZIF connector towards you. This will remove the ribbon cable connecting the motherboard to the screen.

Step 8



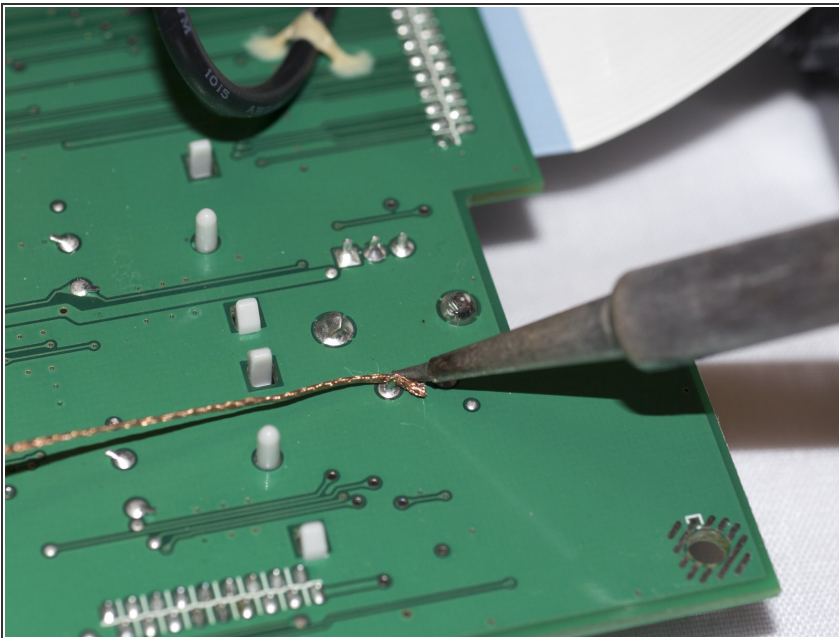
- Wiggle and pull out the ribbon cable connecting the mother board to the beat pads.

Step 9



- Remove the mother board completely from the face plate and identify the broken potentiometer.

Step 10



- Flip the mother board back over so the potentiometers are facing down and the leads are facing up. Then identify which leads correspond to the broken potentiometer.
- Use a soldering iron with solder wick (or a solder sucker) in order to free the potentiometer from the mother board.
- ⓘ Add some leaded solder to the leads if your having trouble getting the factory solder to draw to the solder wick.

To reassemble your device, follow these instructions in reverse order.