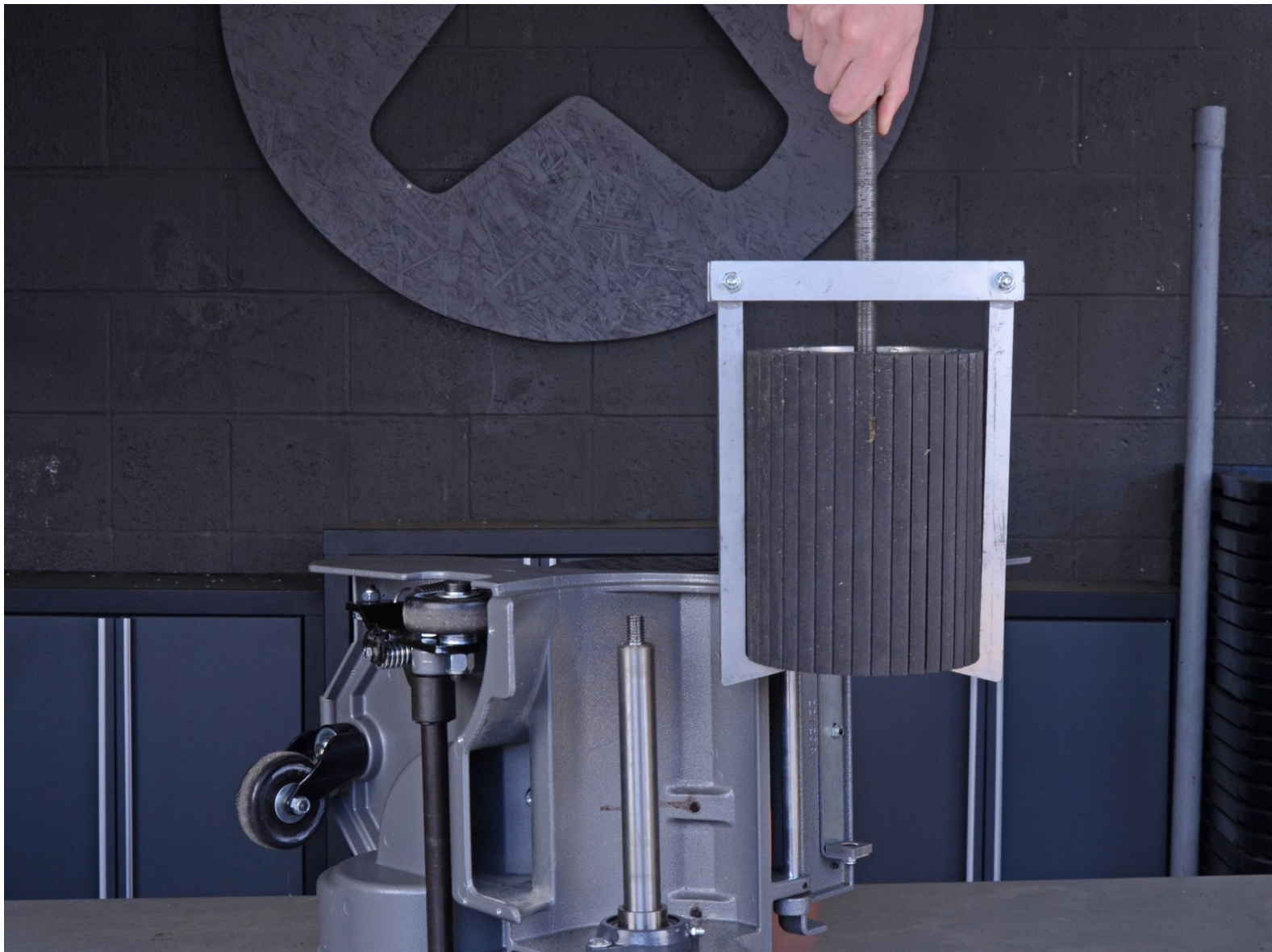




Clarke Floor Sander 07012A 2012 Drum Expander Replacement

This guide will show you how to remove and replace the drum expander in a Clarke EZ-8 floor sander.

Written By: Taylor Dixon



This document was generated on 2020-11-28 07:51:10 AM (MST).

INTRODUCTION

Follow this guide to replace the drum expander of a Clarke EZ-8 floor sander.



TOOLS:

- [3/4" Socket](#) (1)
- [15/16" Socket](#) (1)
- [Drum Puller](#) (1)
- [Impact Driver](#) (1)
- [Flathead Screwdriver](#) (1)




PARTS:

- [Clarke RECOND. EXPANDER COMPLETE 11115A](#) (1)
- [Clarke Key, Washer 65310A](#) (1)

Step 1 — Disconnect all power cables



 Before you begin your repair, disconnect all power cables to reduce the risk of short circuits and electric shock.

Step 2 — Remove the dust bag



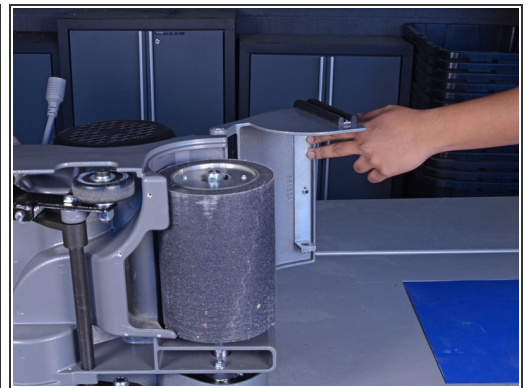
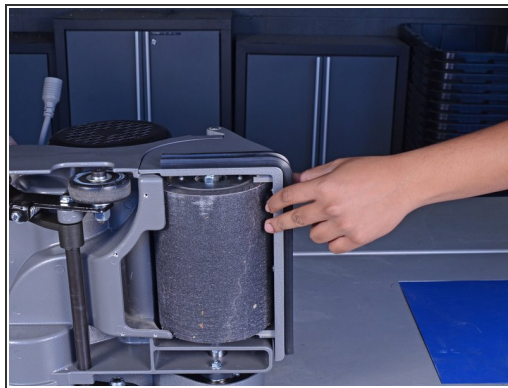
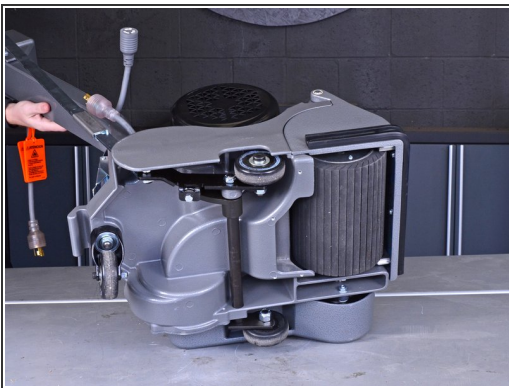
- Pull on the dust bag to remove it from the dust tube.
- ❗ If the dust bag doesn't slide off easily, gently twist it back and forth while pulling to free it from the tube.

Step 3 — Remove the dust tube



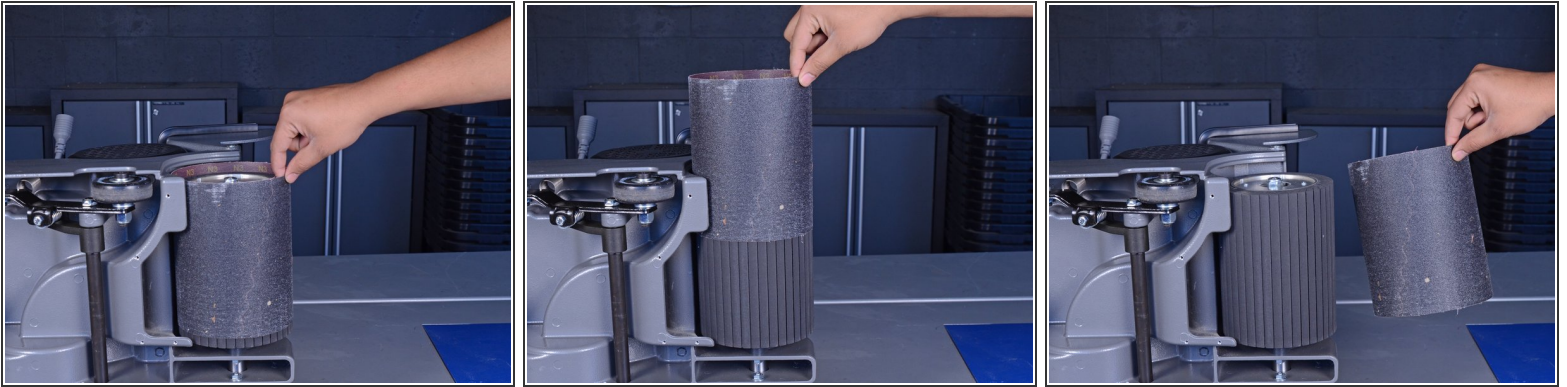
- Pull up on the dust tube to remove it from the sander.

Step 4 — Lower the sander and lift the front cover



- Gently lower the sander onto its left side (the side with the belt guard).
- Lift the front cover up and out of the way of the sanding drum.

Step 5 — Remove the sandpaper from the drum



- Pull the sandpaper loop straight up and remove it from the drum.

Step 6 — Remove the Nyloc nut



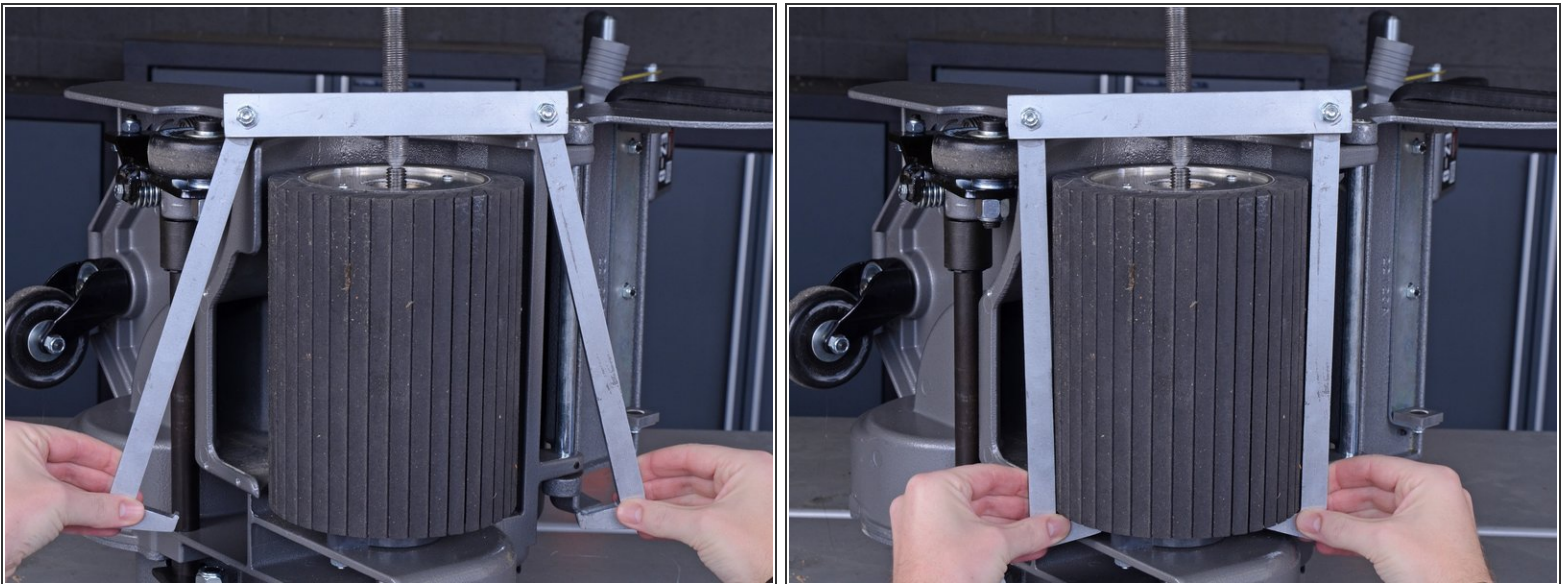
- Remove the 3/4" nyloc nut from the drum end plate.
- ⓘ Nyloc nuts can be difficult to remove. If necessary, use an impact driver or another power tool for this step.

Step 7 — Remove the key washer



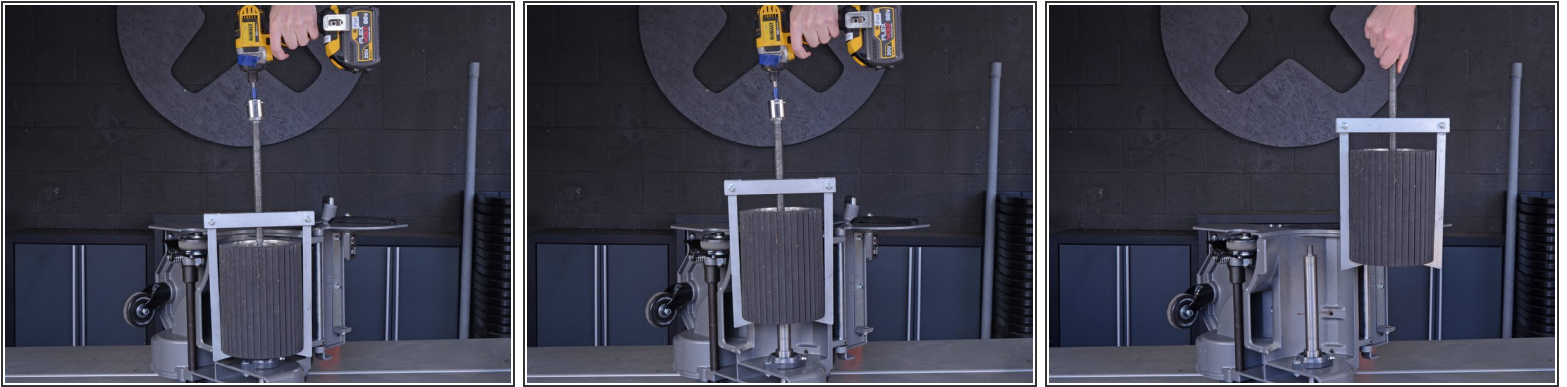
- Use a flathead screwdriver or a prying tool to pry up the key washer and remove it from the drive shaft.
- ⓘ **The key of the key washer may break off during removal.** If so, replace the key washer with a new one during reassembly.

Step 8 — Attach the drum puller



- Place the center screw of the drum puller onto the drive shaft of the sander and hook the puller jaws around the bottom end of the drum.

Step 9 — Remove the drum



- Use a 15/16" socket and an impact driver or a socket wrench to drive the screw of the drum puller clockwise, lifting the drum off the drive shaft.
- Once the drum has been lifted about halfway off the shaft, it should move freely and can be lifted the rest of the way by hand.

To reassemble your device, follow these instructions in reverse order.