



Sony Cyber-Shot DSC-S90 Top/Side Case Replacement

This guide details how to remove and replace a portion of a Sony Cyber-Shot DSC-S90 camera case.

Written By: Jonathan Arns



INTRODUCTION

When removing or replacing the top/side part of the Sony Cyber-Shot DSC-S90's overall casing, it's an easy process that only involves ten simple steps. The tools needed consist of the opening tool, and J00 screwdriver. It's important to make sure you have all the latches of the casing unhooked in attempt of disassembly, some are challenging to locate.



TOOLS:

- [Phillips #00 Screwdriver](#) (1)
 - [iFixit Opening Tool](#) (1)
-

Step 1 — Batteries



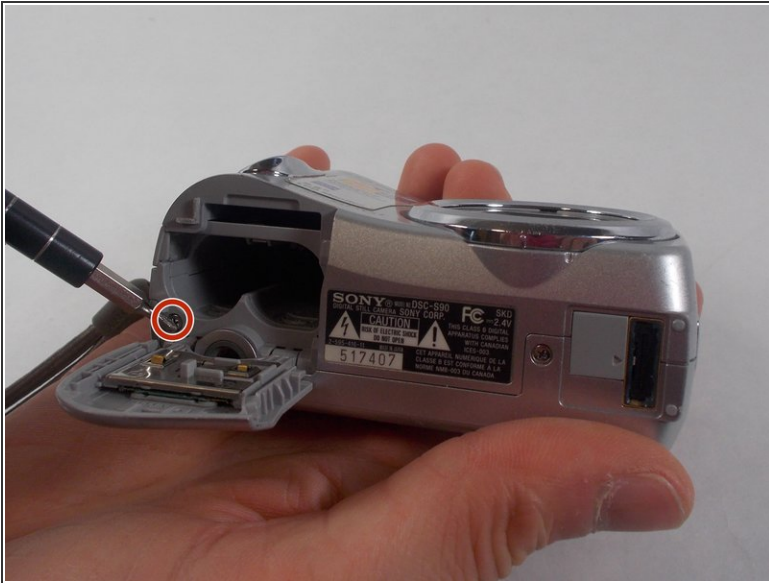
- Hold down the "open" button (gray oval with arrow pointing upwards) on the battery port door.
- While holding the button downwards, slide the door upwards to unlock and open the door.

Step 2



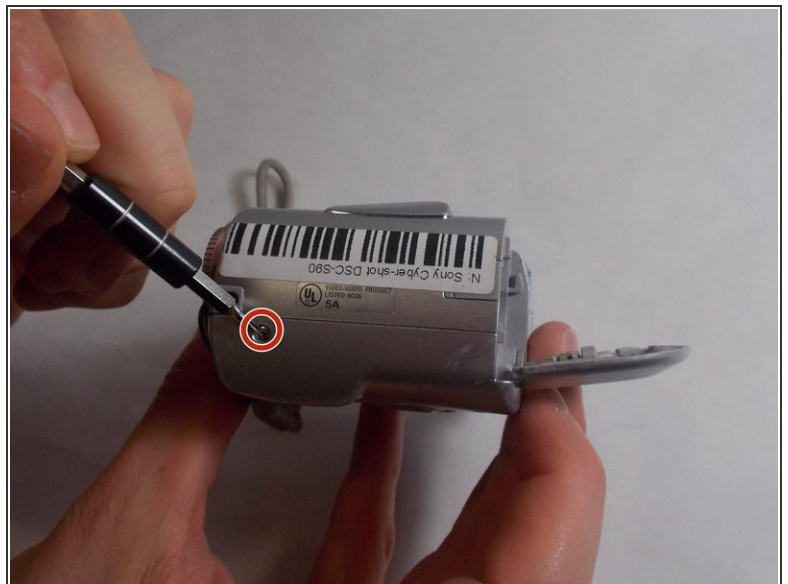
- Pull open the door and allow the batteries to fall out.

Step 3 — Back Case



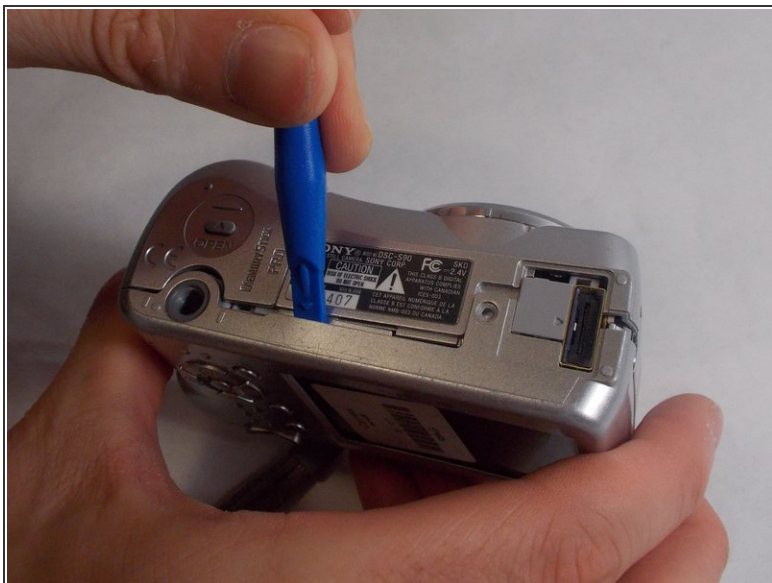
- Remove the 2mm Phillips #00 screw under the battery port door.
- Remove the 2mm Phillips #00 screw towards the right of the bottom-side of the camera.

Step 4



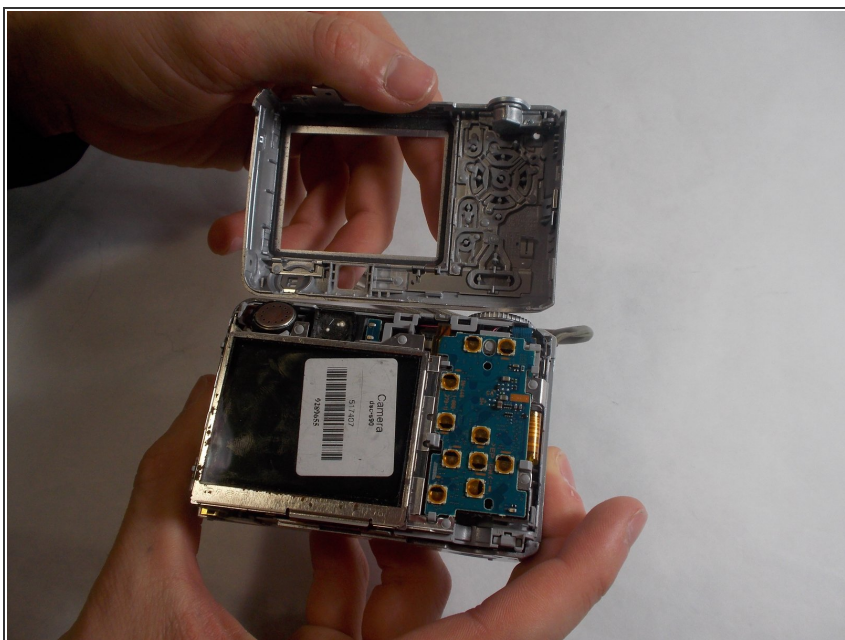
- Remove the two 2mm Phillips #00 screws (one on each side of the camera).

Step 5



- Use an opening tool to unlock the front case from the main body of the camera. Use the tool on the right side and bottom of the camera with the LCD screen facing you.

Step 6



- Pull apart the back case from the main body of the camera.

Step 7 — Front Case



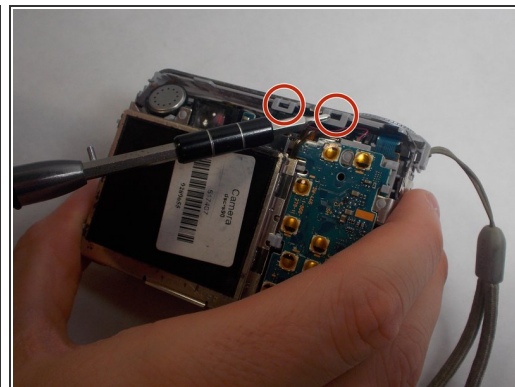
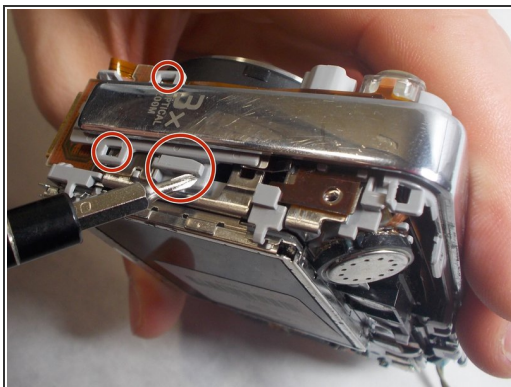
- Use an opening tool to unlock the front case from the main body of the camera. Use the tool on the top of the camera.

Step 8



- Pull apart the front case from the main body of the camera.

Step 9 — Top/Side Case



- Release all clips and latches keeping the casing in place using a spudger, opening tool, or screwdriver.

Step 10



- Now the casing can be removed after all latches have been undone.

To reassemble your device, follow these instructions in reverse order.