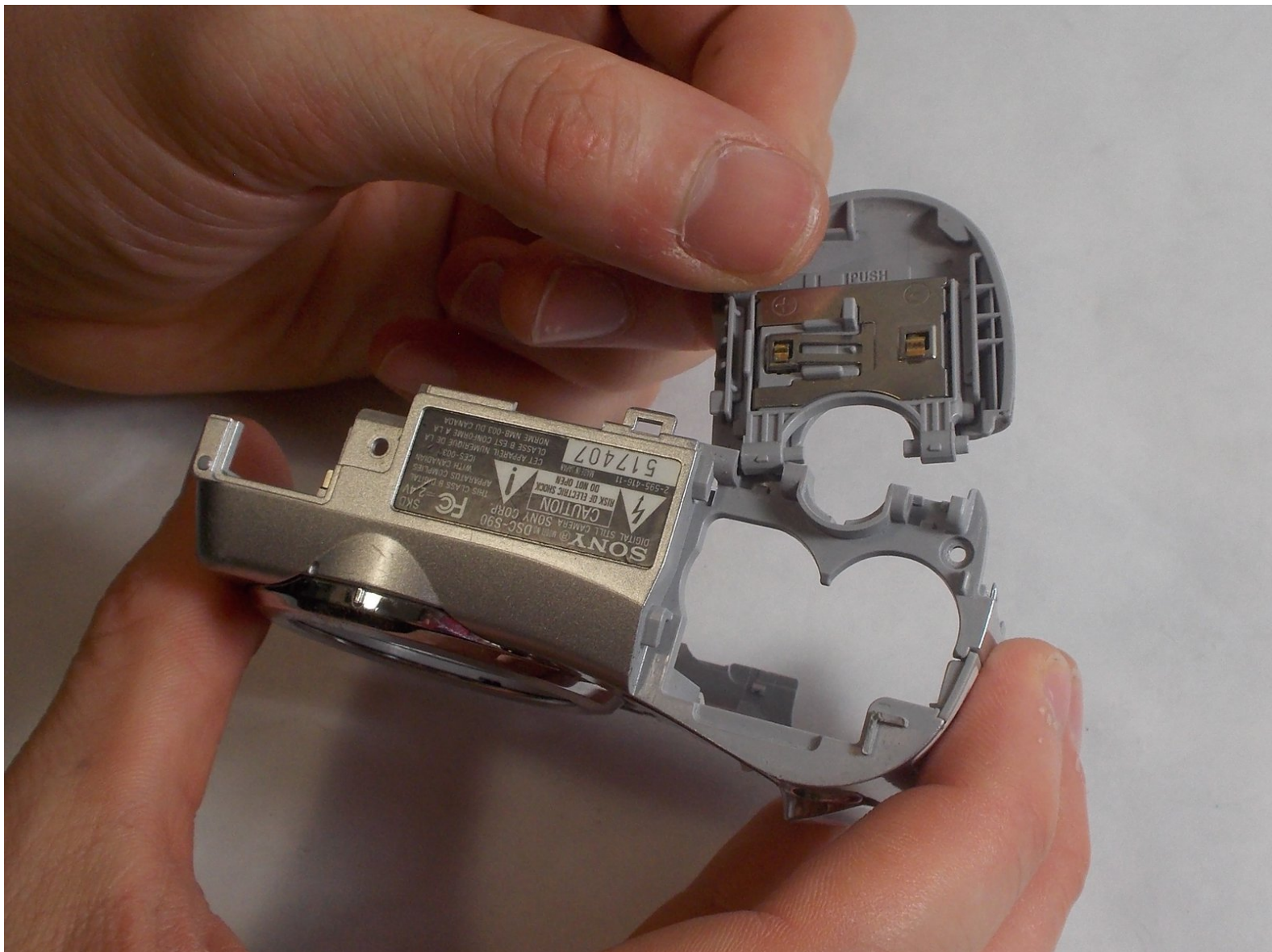




# Sony Cyber-Shot DSC-S90 Battery Door Replacement

This guide demonstrates how to remove and replace the Sony Cyber-Shot DSC-S90's battery door.

Written By: Jonathan Arns



---

## INTRODUCTION

When taking off the battery door of the Sony Cyber-Shot DSC-S90, it's important to remove the battery casing first. After this has been completed, taking off the door should be completed with ease.

---

### TOOLS:

- [Phillips #00 Screwdriver](#) (1)
  - [iFixit Opening Tool](#) (1)
-

## Step 1 — Batteries



- Hold down the "open" button (gray oval with arrow pointing upwards) on the battery port door.
- While holding the button downwards, slide the door upwards to unlock and open the door.

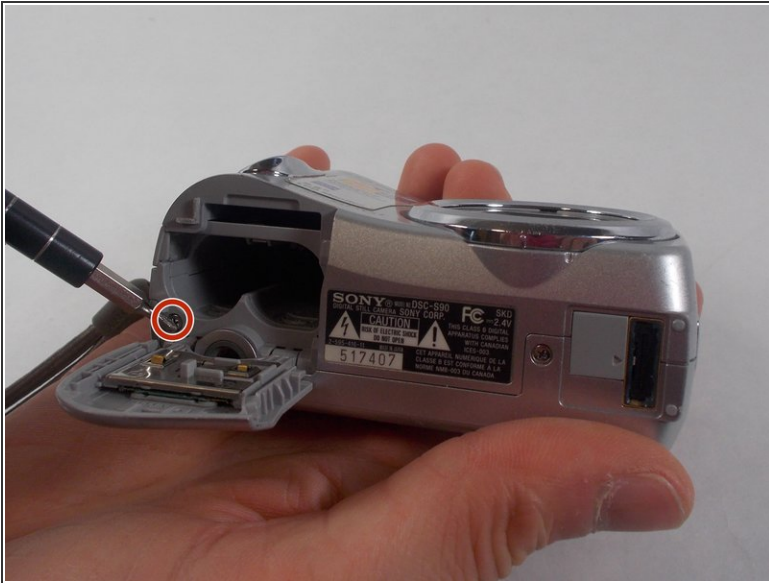
## Step 2



- Pull open the door and allow the batteries to fall out.

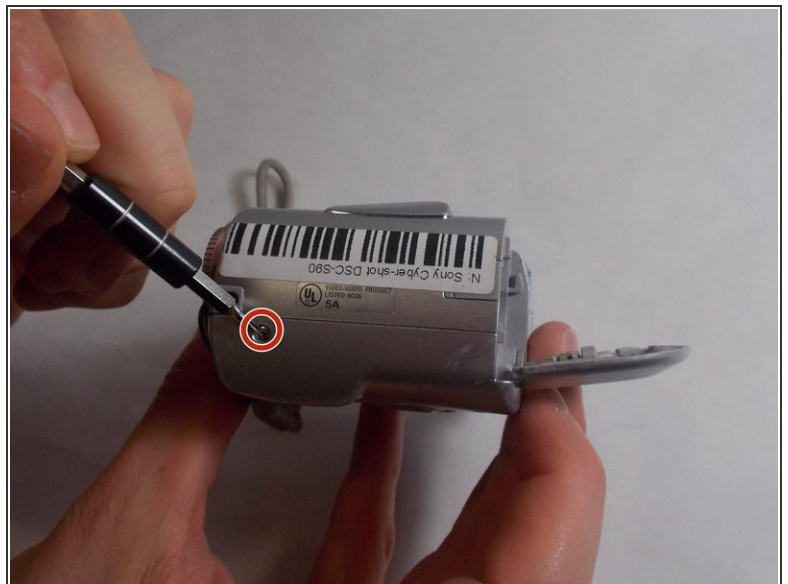


### Step 3 — Back Case



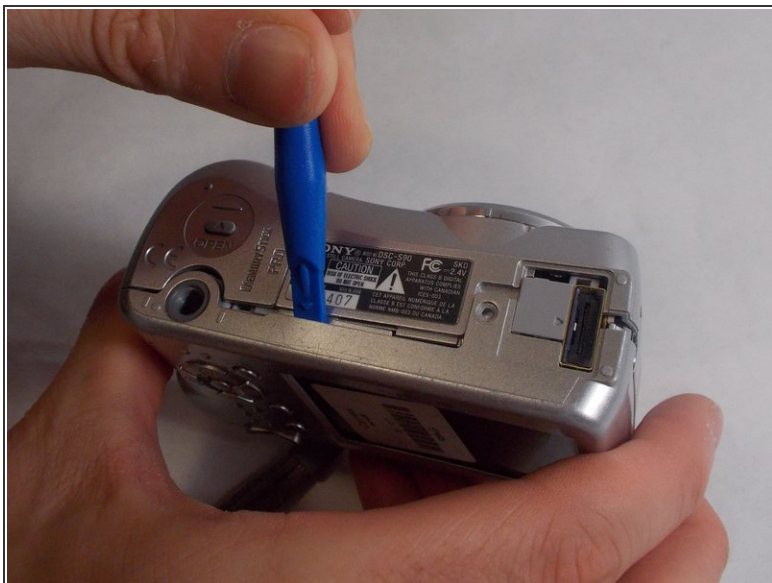
- Remove the 2mm Phillips #00 screw under the battery port door.
- Remove the 2mm Phillips #00 screw towards the right of the bottom-side of the camera.

### Step 4



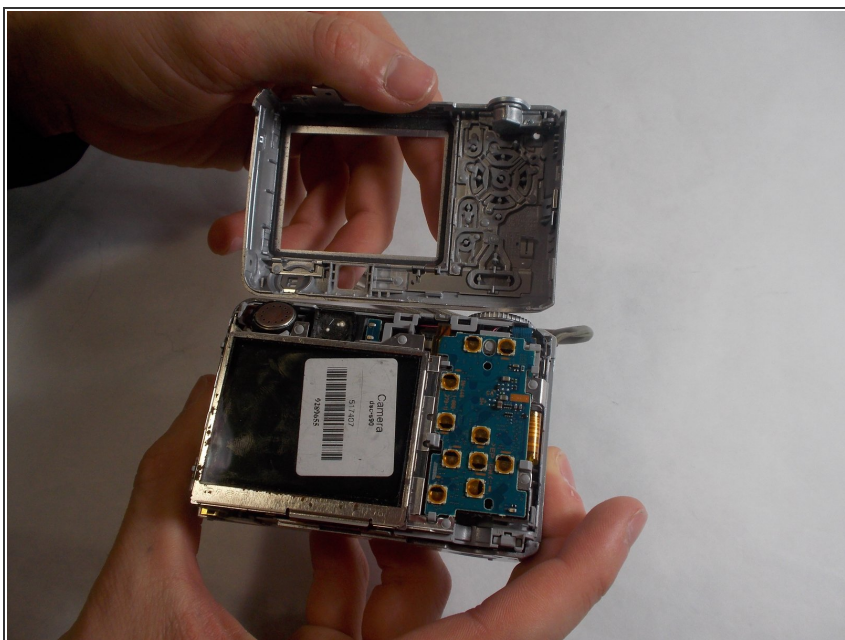
- Remove the two 2mm Phillips #00 screws (one on each side of the camera).

## Step 5



- Use an opening tool to unlock the front case from the main body of the camera. Use the tool on the right side and bottom of the camera with the LCD screen facing you.

## Step 6



- Pull apart the back case from the main body of the camera.

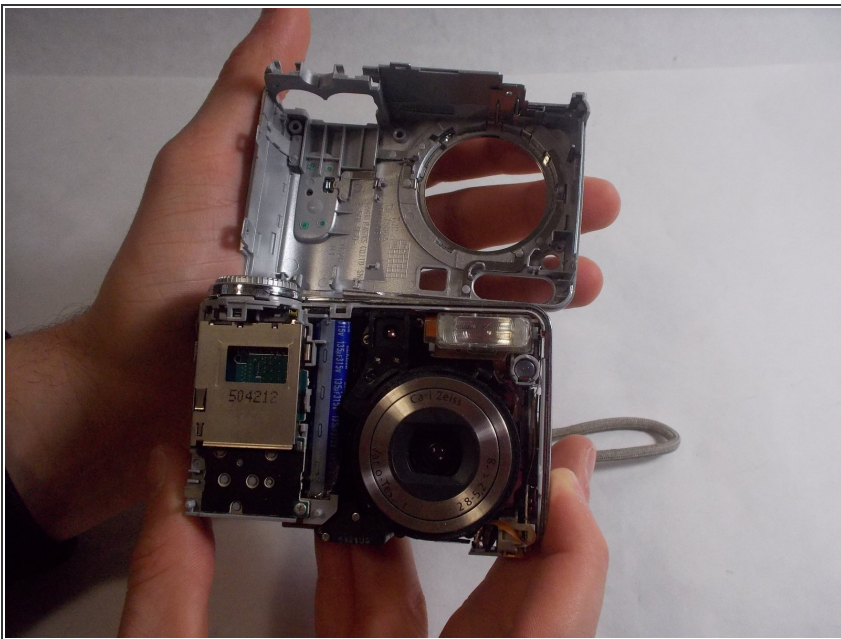


## Step 7 — Front Case



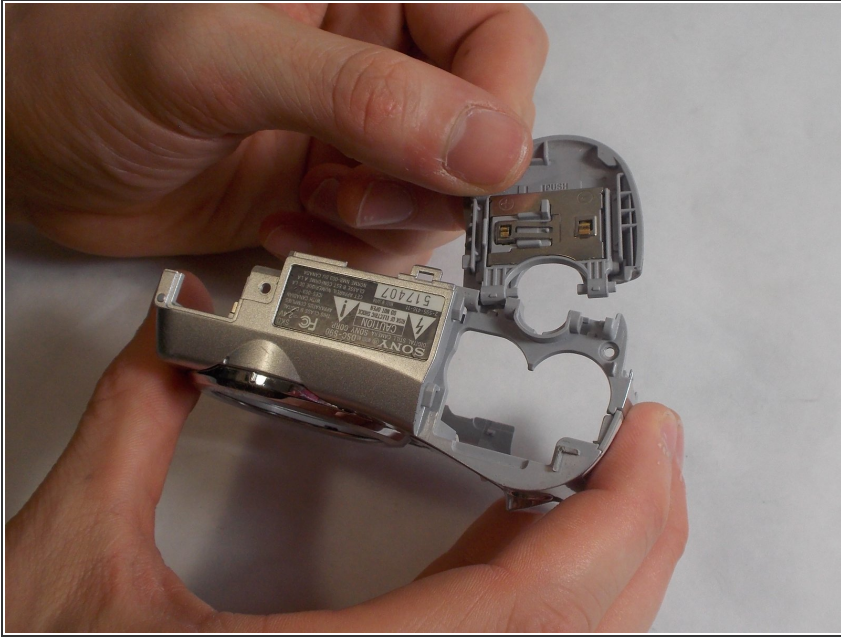
- Use an opening tool to unlock the front case from the main body of the camera. Use the tool on the top of the camera.

## Step 8



- Pull apart the front case from the main body of the camera.

## Step 9 — Battery Door



- After the front casing is removed, the battery door hinges off freely.

To reassemble your device, follow these instructions in reverse order.