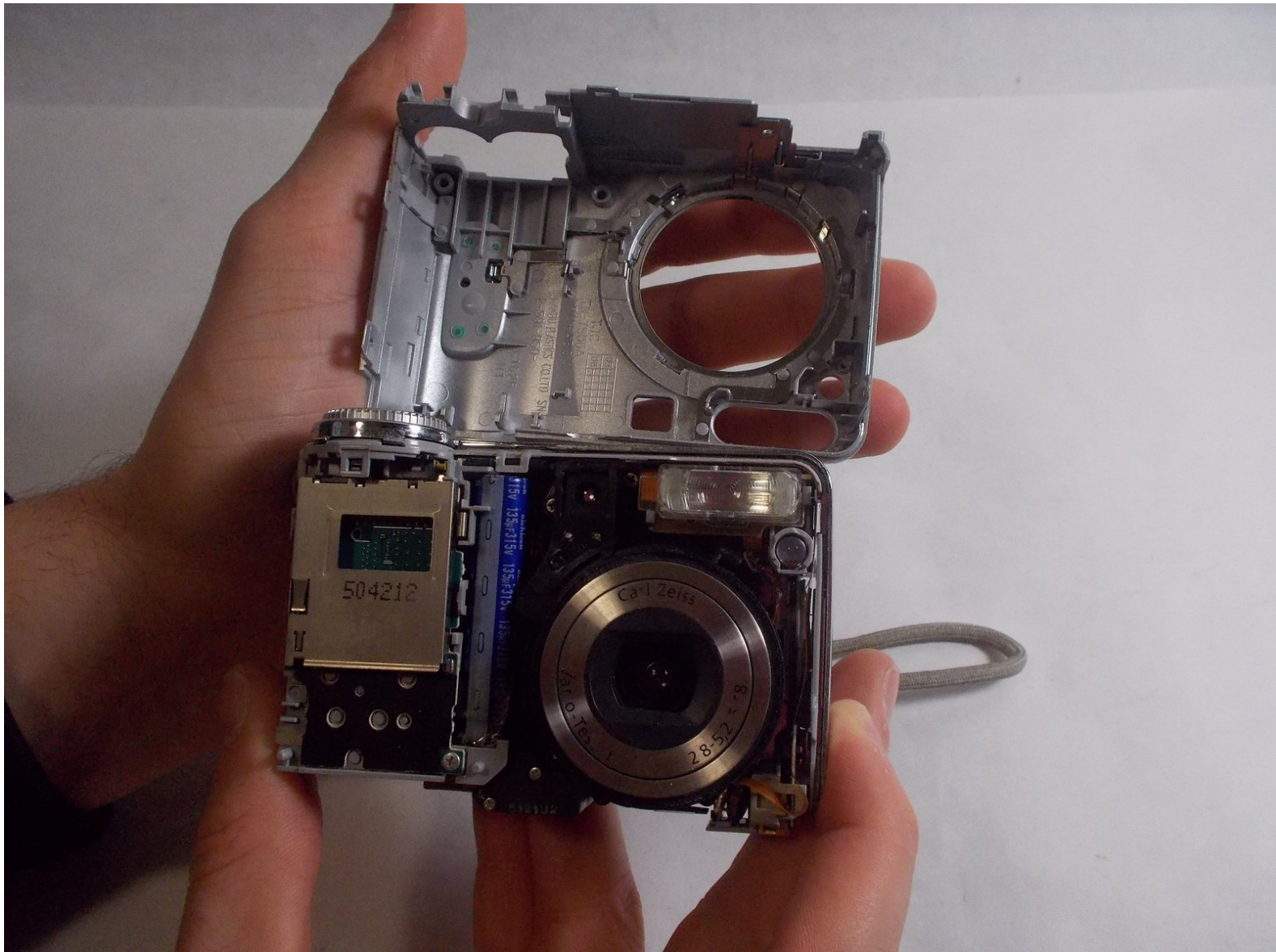




Sony Cyber-Shot DSC-S90 Front Case Replacement

Removal and replacement of Sony Cyber-shot DSC-S90 case.

Written By: Jonathan Arns



INTRODUCTION

The following guide provides step-by-step instructions for replacing the Front case of a Sony Cyber-Shot DSC-S90 Camera. The front case is what contains the internal components and prevents the components from being exposed to contaminants. You may need to make this replacement if the case becomes cracked or damaged in any way. Replacing the front case is simple and should only take about 6 minutes to complete. You will begin by removing the batteries and removing the screws that hold the front case in place, then prying the front case away from the main body of the camera.

TOOLS:

- [Phillips #00 Screwdriver](#) (1)
 - [iFixit Opening Tool](#) (1)
-

Step 1 — Batteries



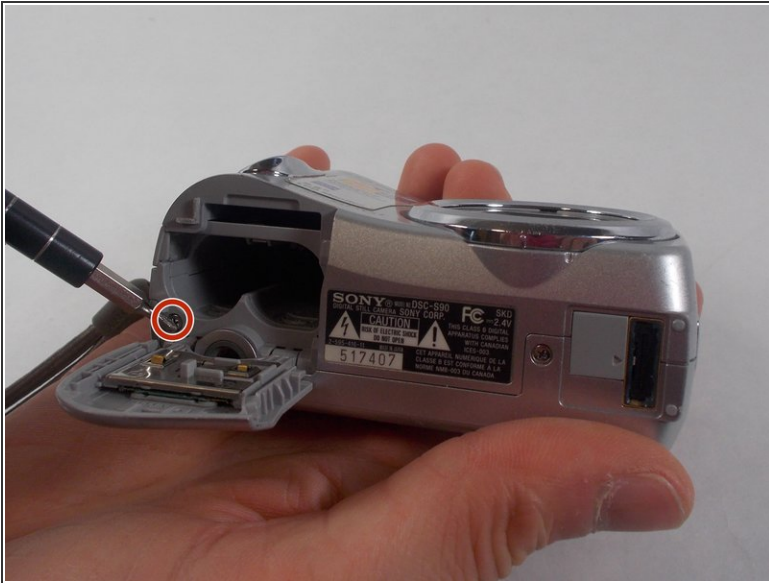
- Hold down the "open" button (gray oval with arrow pointing upwards) on the battery port door.
- While holding the button downwards, slide the door upwards to unlock and open the door.

Step 2



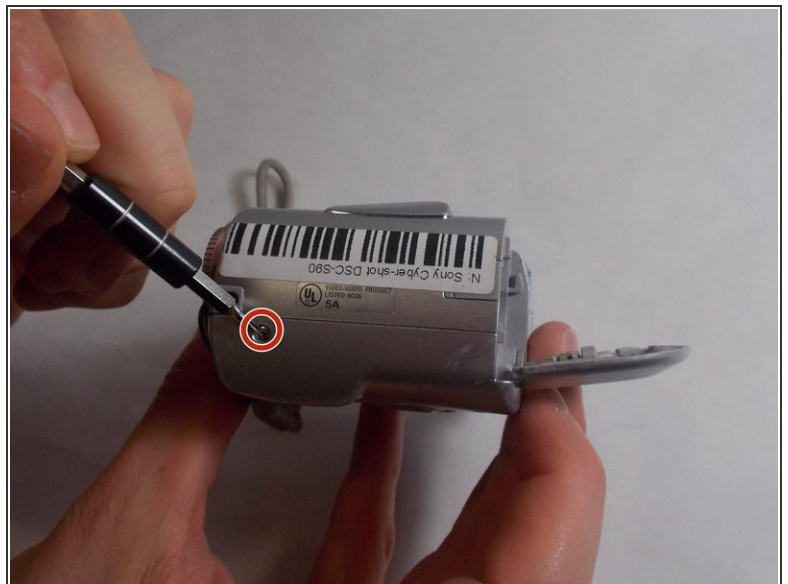
- Pull open the door and allow the batteries to fall out.

Step 3 — Back Case



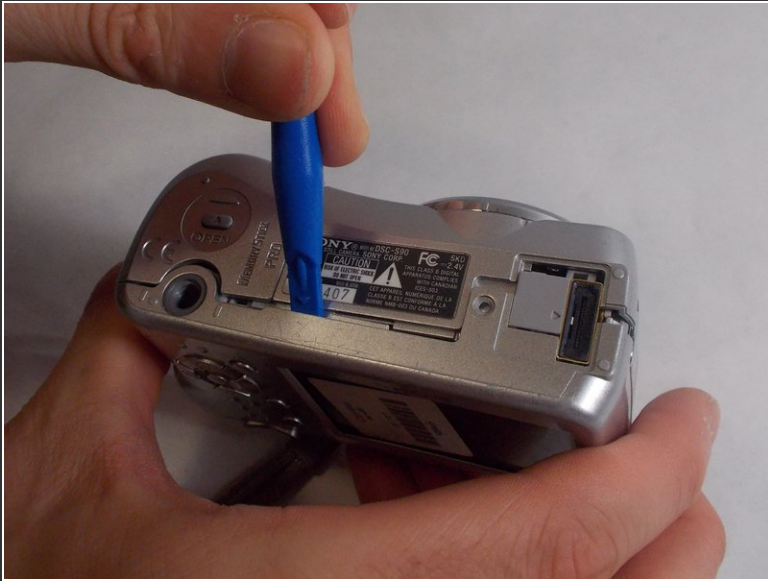
- Remove the 2mm Phillips #00 screw under the battery port door.
- Remove the 2mm Phillips #00 screw towards the right of the bottom-side of the camera.

Step 4



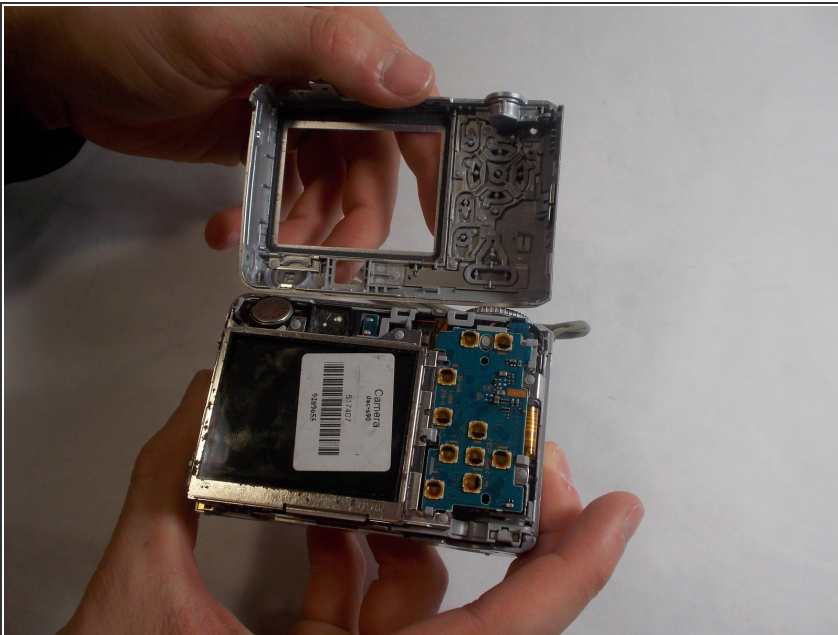
- Remove the two 2mm Phillips #00 screws (one on each side of the camera).

Step 5



- Use an opening tool to unlock the front case from the main body of the camera. Use the tool on the right side and bottom of the camera with the LCD screen facing you.

Step 6



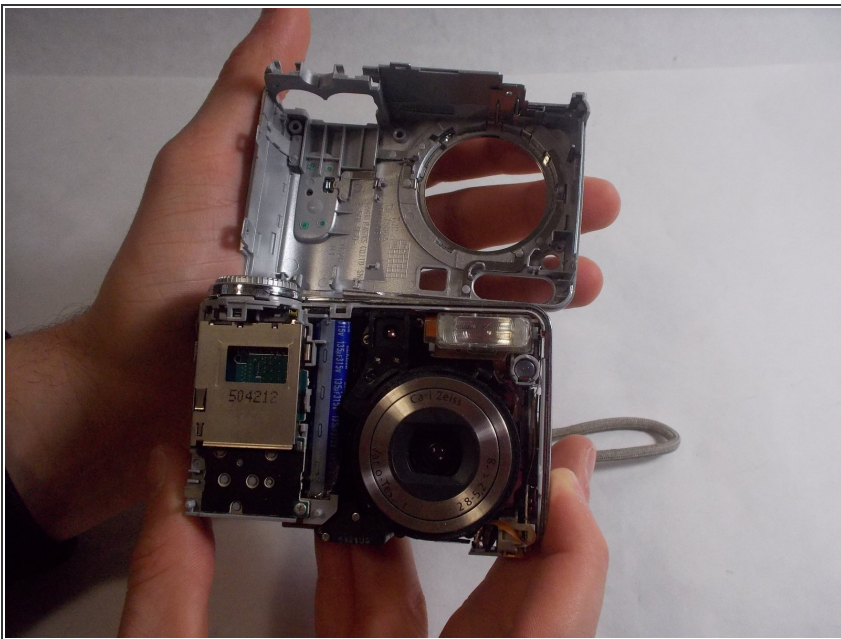
- Pull apart the back case from the main body of the camera.

Step 7 — Front Case



- Use an opening tool to unlock the front case from the main body of the camera. Use the tool on the top of the camera.

Step 8



- Pull apart the front case from the main body of the camera.

To reassemble your device, follow these instructions in reverse order.