



HP 15-da0002dx SSD Replacement

If your HP Notebook 15-da0002dx laptop is...

Written By: Abigail Aron



INTRODUCTION

If your HP Notebook 15-da0002dx laptop is making ticking sounds, experiences frequent crashes, or if your computer has trouble reading files, saving files, or is generally running slow, the SSD may need to be replaced. The SSD (Solid State Drive) acts as a storage device that reads, writes, and stores data.

Before using this guide, make sure your computer's issues are not caused by its software. Restart the computer and see if the problems continue. If not, make sure your computer's operating system is updated.

Before using this guide, power off the computer and wait for the components to cool. Working over a non-carpeted surface will reduce the risk of ESD damage (electrostatic discharge). A non-carpeted surface should not be able to conduct electricity and is connected to a grounded surface. Another way to reduce the risk of ESD damage is by using a plastic tool when removing the battery as plastic does not conduct electricity.



TOOLS:

- [Phillips #1 Screwdriver](#) (1)
- [iFixit Opening Tool](#) (1)



PARTS:

- [Crucial P3 NVMe PCIe M.2 2280SS SSD - solid performance, switching from HDD or SATA to NVMe™](#) (1)
- [Crucial P3 Plus NVMe PCIe M.2 2280SS SSD - fast Gen4 NVMe™ storage for data-intensive applications](#) (1)
- [Crucial P5 Plus NVMe PCIe M.2 2280SS SSD - professionals, creatives, and hardcore gamers](#) (1)

Step 1 — Back Cover



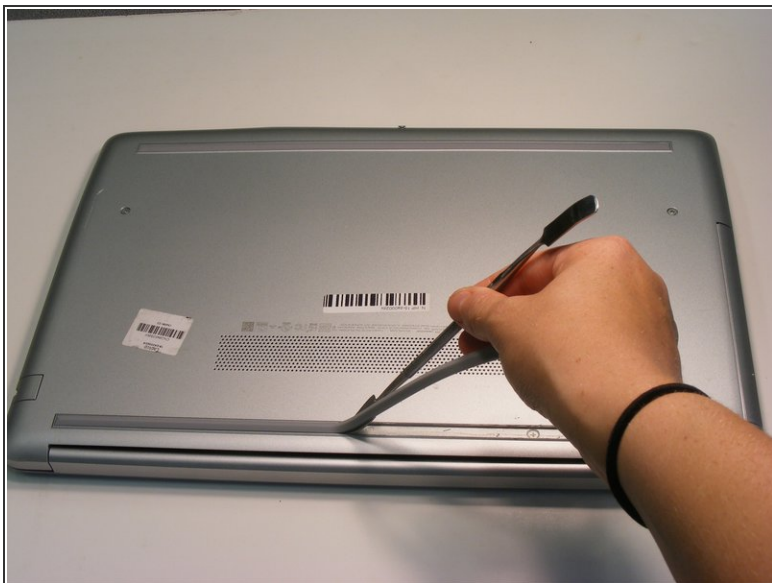
- Make sure the computer is completely turned off.

Step 2



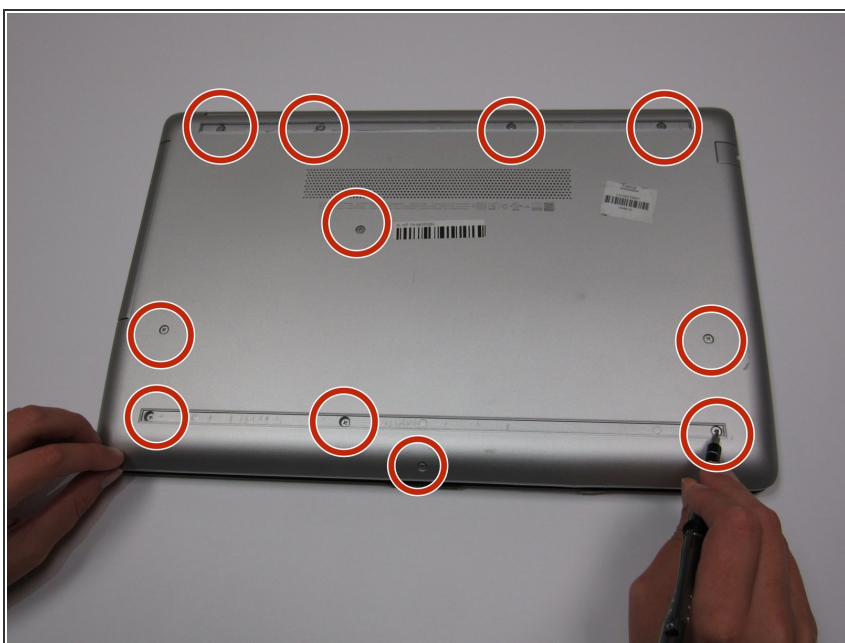
- Turn over the laptop.
- The HP label should be touching the table and the bottom cover should be facing up.

Step 3



- Two plastic feet are located on adjacent sides of the back cover.
- Peel back the plastic feet using the plastic opening tools.

Step 4



- Using the Phillips #1 screwdriver, unscrew the eleven 9.0 mm screws holding the back cover in place.

Step 5



- Carefully flip over the computer so the HP label is now facing the ceiling.

Step 6



- Open the screen.
- Run the plastic opening tools along the edge of the back cover. Do this until the back cover becomes loose.

Step 7



- Close the screen and flip over the laptop. Using the plastic opening tools, gently take off the back cover starting from the middle, bottom edge.

Step 8 — Battery



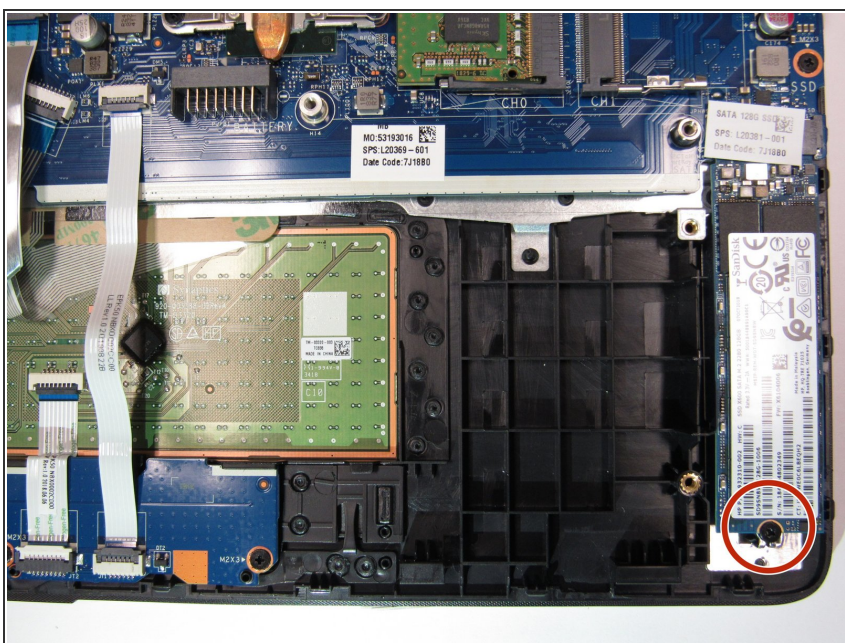
- Remove the screws holding the battery in place using a Phillips #1 screwdriver.

Step 9



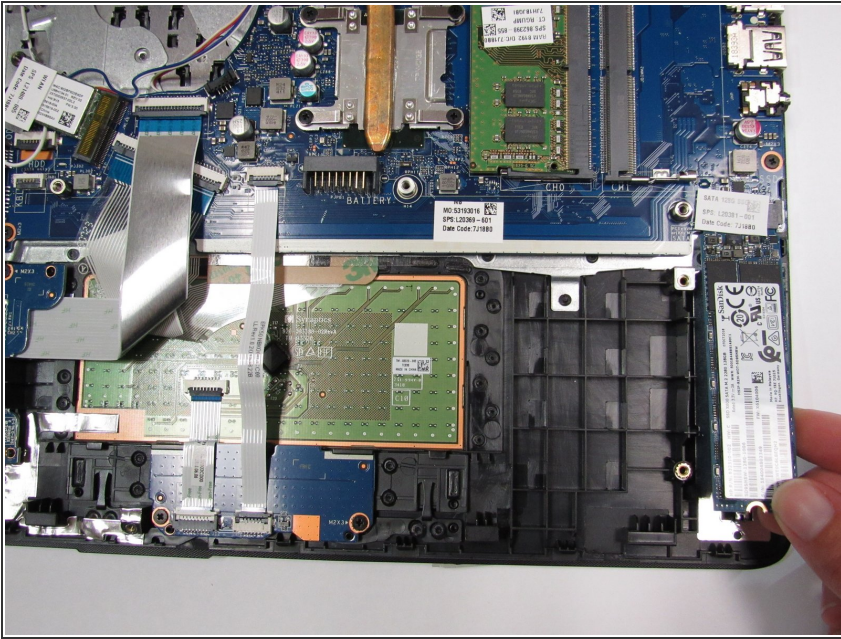
- Using your fingers, tilt the top part of the battery towards you.
- Continue to pull the rest of the battery away from the mounting tabs to remove.

Step 10 — SSD



- Remove the screw holding the SSD in place using the Phillips #1 screwdriver.

Step 11



- Carefully pull the SSD away from the socket.

To reassemble your device, follow these instructions in reverse order.