



# Nintendo Switch Pro Controller Joystick Module Replacement

Use this guide to replace the joystick control...

Written By: Daniel Tagalog



# INTRODUCTION

Use this guide to replace the joystick control modules on your Nintendo Switch Controller. To complete this project, you must be able to [solder](#). Care should be taken in the removal of the plastic body pieces and the internal circuit board of the device to avoid damage that could render the device inoperable. This project also involves the removal of a lithium-ion battery, and if swollen, [be sure to take appropriate precautions](#).



## TOOLS:

[Tweezers](#) (1)  
[iFixit Opening Picks \(Set of 6\)](#) (1)  
[Desoldering Braid](#) (1)  
[Lead-Free Solder](#) (1)  
[Soldering Iron 60w Hakko 503F](#) (1)  
[Phillips #00 Screwdriver](#) (1)  
[iFixit Opening Tool](#) (1)



## PARTS:

[Nintendo Switch Pro Controller Joystick](#) (1)

## Step 1 — Remove the screws



- Flip the controller over so the model stickers face the ceiling.
- Use a [JIS](#) #00 screwdriver to remove the two black 8.4 mm screws that secure the handles, located at the ends of the handles.

## Step 2 — Remove the handle covers



- Carefully remove the handle covers by pulling them away from the main body.

## Step 3 — Remove the screws



- Use a JIS #00 screwdriver to remove the four silver 6.8 mm screws that secure the clear back plastic cover.

## Step 4 — Unclip the plastic cover



- Carefully pry away the clear plastic cover using your fingernail.

## Step 5 — Remove the clear plastic cover



- Remove the clear plastic cover.

## Step 6 — Remove the battery



- Remove the lithium-ion battery by using a fingernail or plastic opening tool to pry it up on the left side.

 Only a small amount of force is needed.

## Step 7 — Remove the screws



- Use a Phillips #1 screwdriver to remove the five 5 mm screws from the back of the controller.
  - The two case screws above the handgrips and the single case screw below the battery bay have a shallow seat. These three screws can be easily removed.
  - The two case screws adjacent to the **ZR** and **ZL** shoulder buttons have a deep seat. Use an extension or a Phillips screwdriver with a longer shaft to reach these screws.



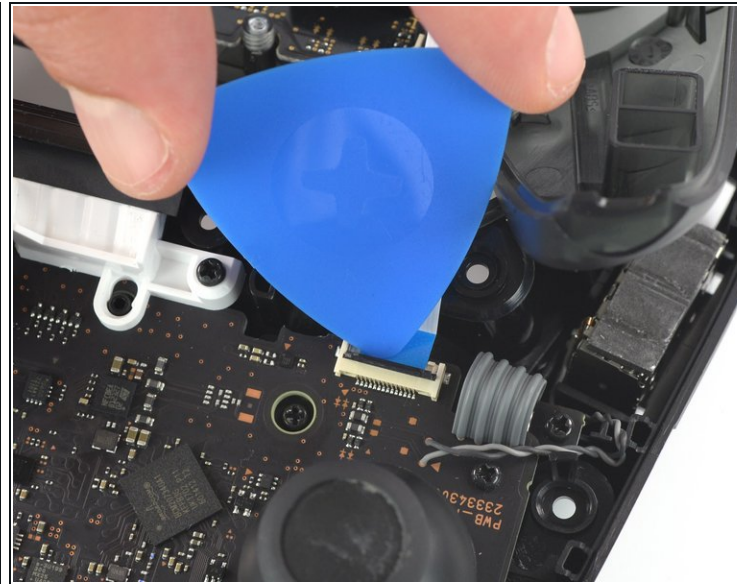
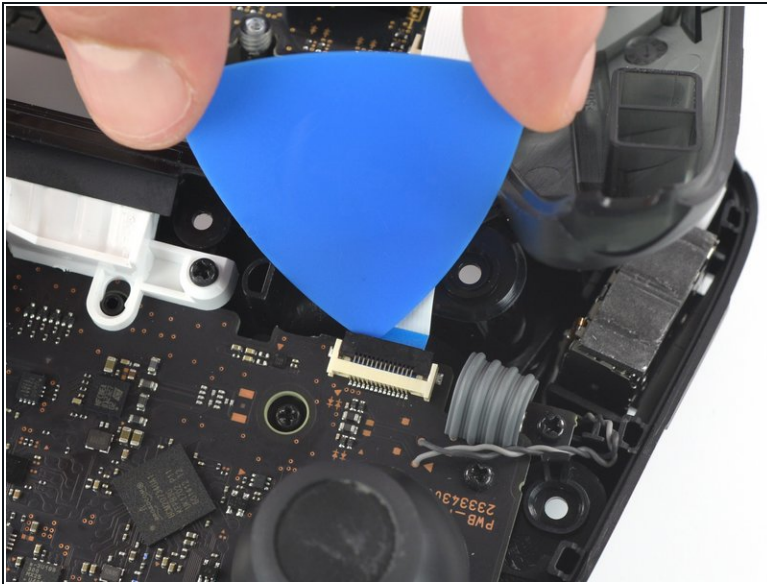
## Step 8



- Delicately take off the plastic cover from the controller.

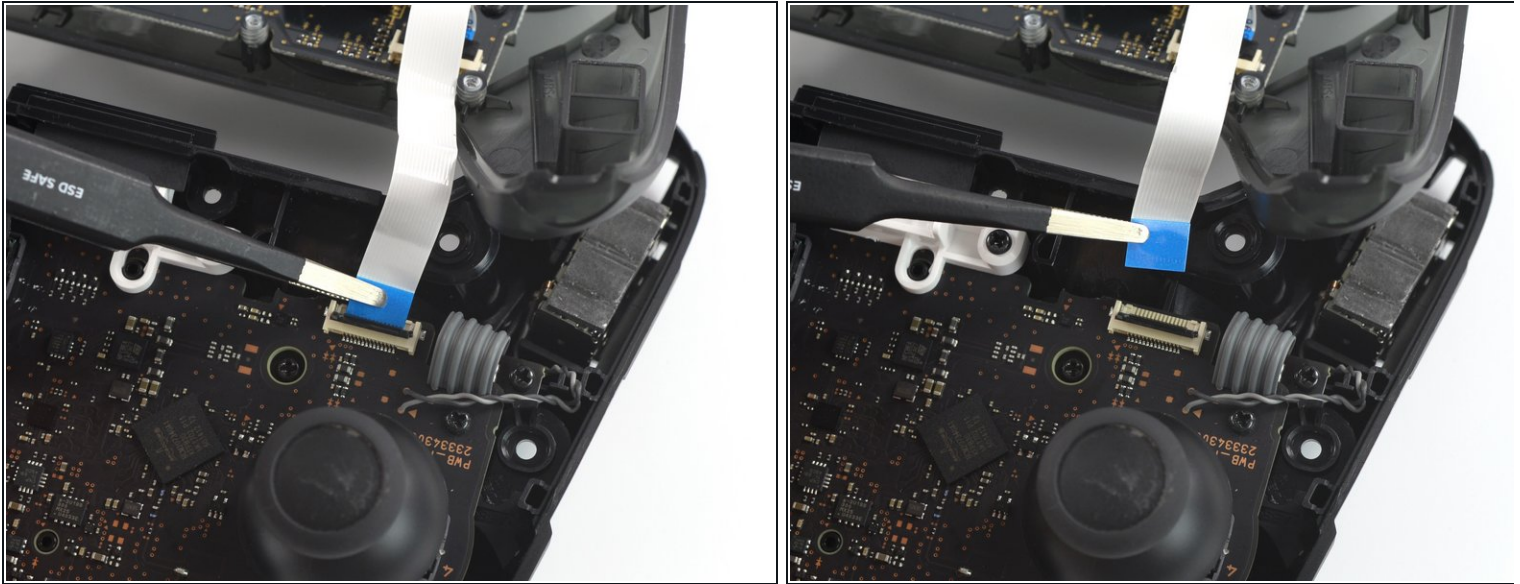
⚠ Do not completely remove the front cover just yet, as it is still attached to the motherboard via a white ribbon cable.

## Step 9 — Open the flap



- Use the tip of an opening pick to open the black flap of the ZIF connector by pushing it upwards.

## Step 10 — Disconnect the interconnect cable



- Use your fingers or a pair of blunt nose tweezers to disconnect the interconnect cable from its connector.

## Step 11 — Remove the front case



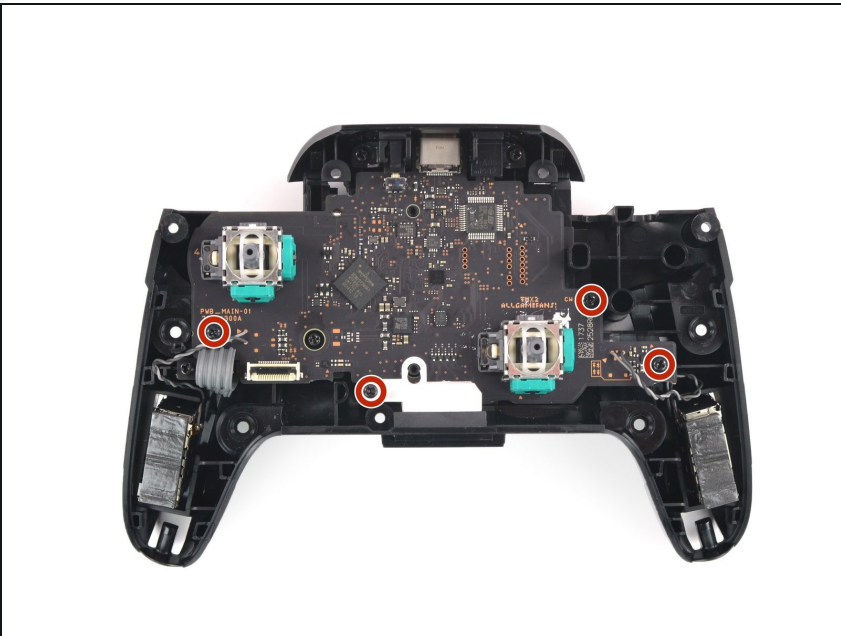
- Remove the front case.

## Step 12 — Remove the joystick caps



- With light force pull the two joystick caps off of the controller.

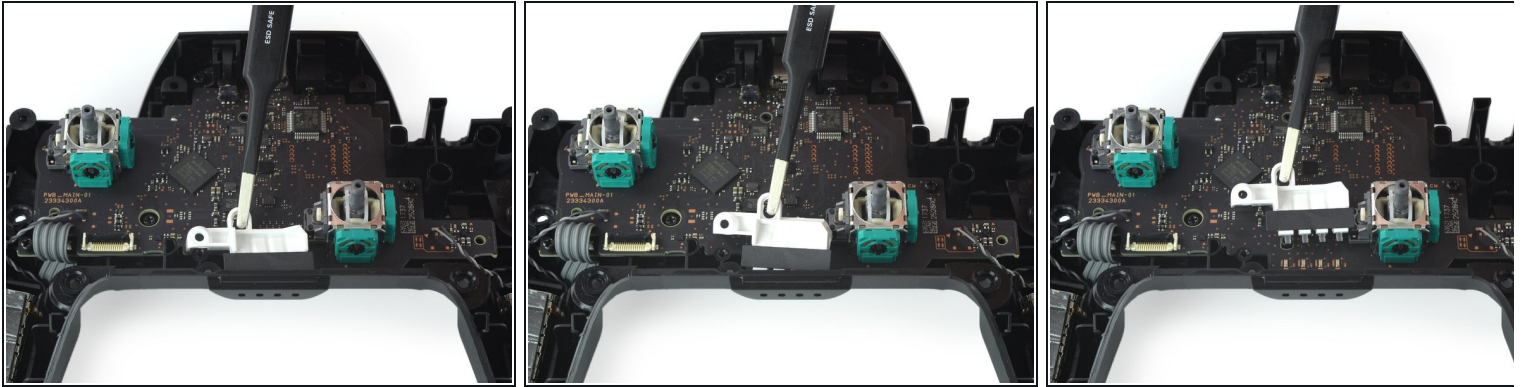
## Step 13 — Unscrew the motherboard



- Use a Philipps screwdriver to remove the four 5 mm-long screws securing the motherboard.



## Step 14 — Remove the LED light



- Use your fingernail or a pair of tweezers to pry the LED light away from its slot.
- ⓘ Set aside the LED light with its corresponding screw for reassembly.

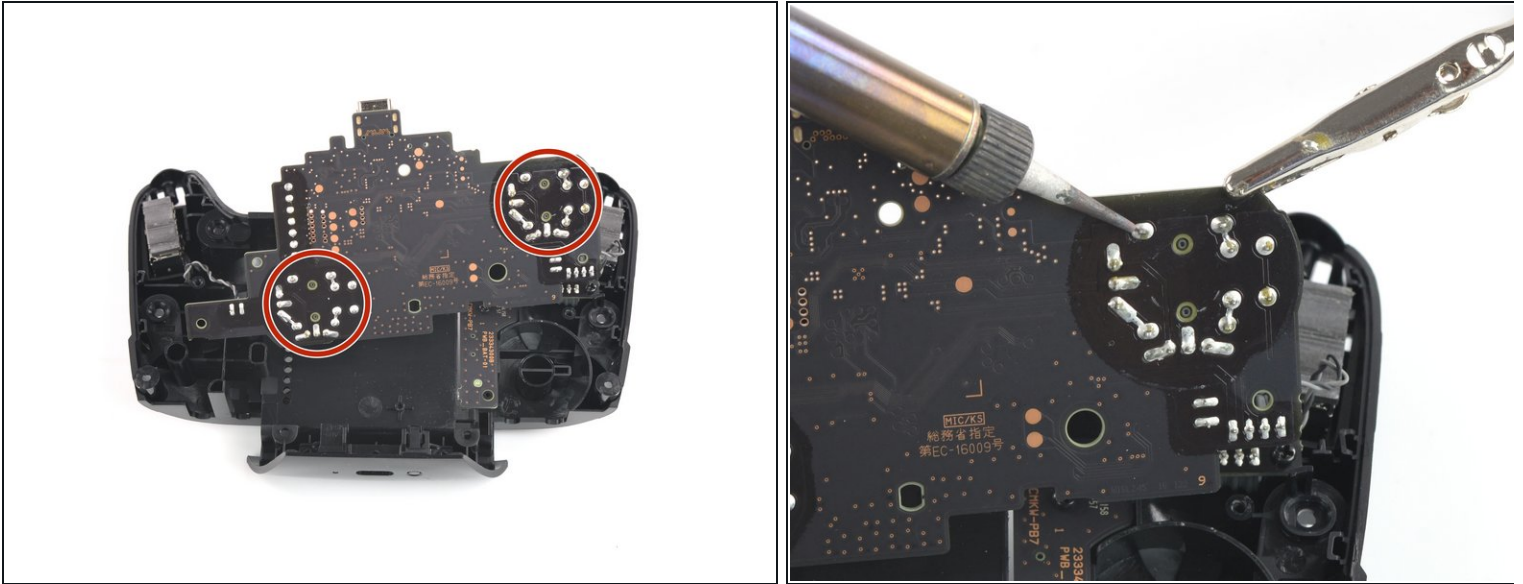
## Step 15 — Loosen the circuit board



- Loosen the circuit board off the chassis by gently pulling at the bottom right corner.
- Lift the circuit board up to expose its backside.

**⚠ Avoid using too much force when lifting the circuit board to prevent damaging the wires.**

## Step 16 — Desolder the joystick module



- Turn to the backside of the circuit board for clear access to the solder joints.
  - Desolder all of the outlined solder joints.
  - Remove the joystick module from the circuit board.
- i** Refer to the following solder guide if necessary: [How To Solder and Desolder Connections](#)

To reassemble your device, follow these instructions in reverse order.