



Slider of toaster does not stay down - Repair

It happens relatively often that the slider of...

Written By: VauWeh



INTRODUCTION

It happens relatively often that the slider of the toaster [no longer stays down](#), but the heaters still work. On most toasters the slider is held by an electromagnet at the bottom, here you will often find the malfunction: either the coil is defective or the magnet is contaminated with bread crumbs and can therefore no longer hold. This issue can be easily eliminated and the repair is about the same for many toasters.

The repair is shown on an old Tefal model 539627.

TOOLS:

[Phillips #2 Screwdriver](#) (1)

Step 1 — Slider of toaster does not stay down



① The repair is done on an old Tefal model 539627, but is the same for many toasters.

⚠ Never forget the first step: pull the plug!

Step 2



- Pull off the button on the slider, you need a lot of strength to do this.

Step 3



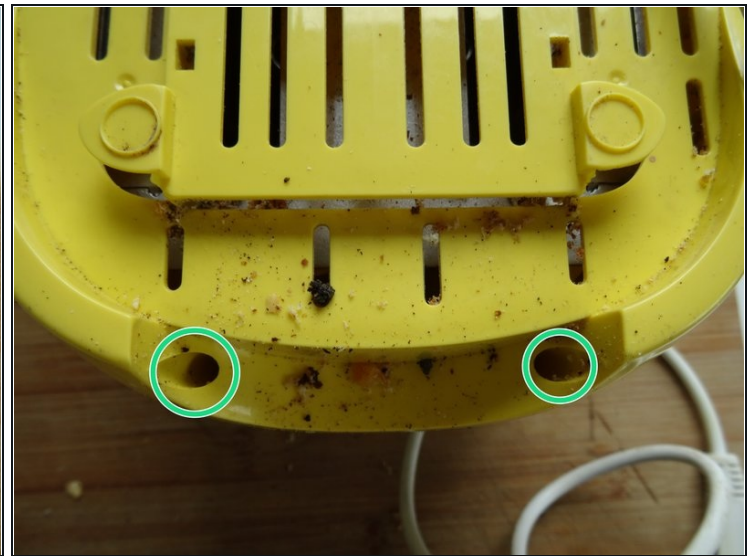
- Also pull off the knob on the controller, a lever tool was used here.

Step 4



- Place the toaster face down on the work surface.
- Pull out the crumb drawer.

Step 5



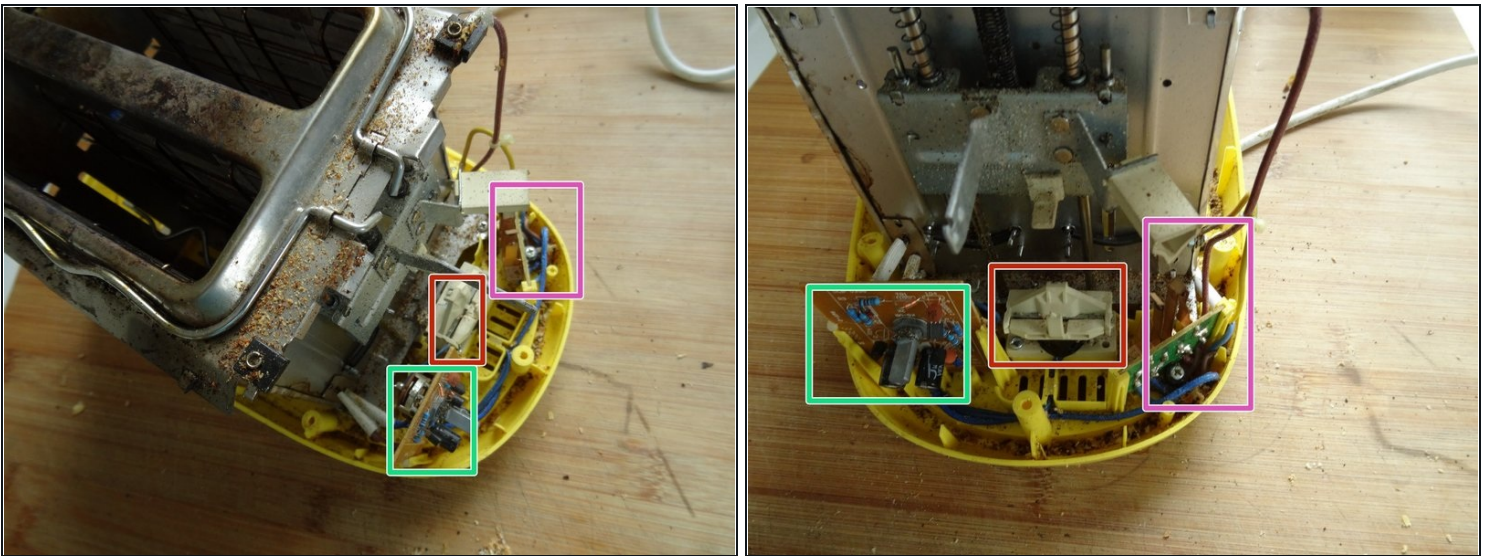
- ① The upper part is fixed by five Phillips screws to the lower part. Find the screws sitting in deep holes.
- Three of the screws are in the front half.
 - Two of the screws are in the other half under the crumb drawer.
 - Unscrew and remove all screws.

Step 6



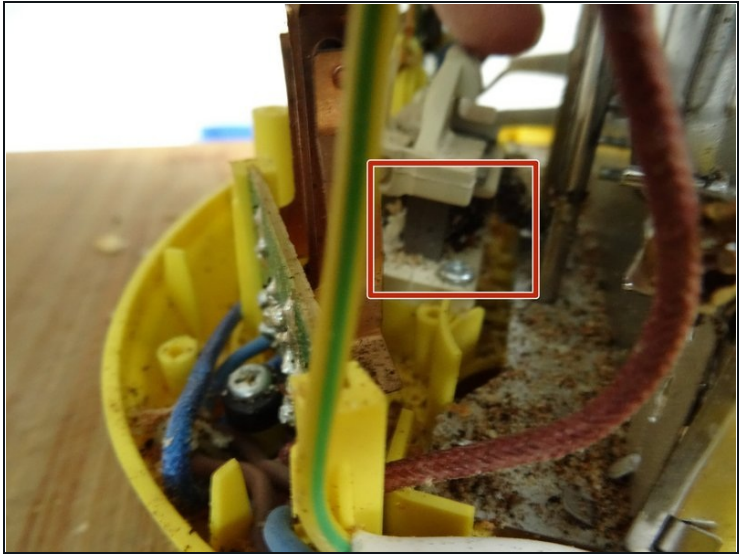
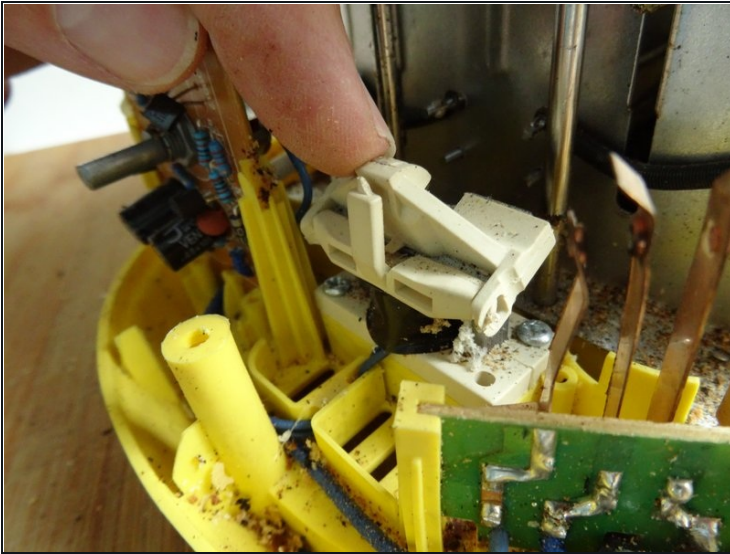
- Insert a plastic tool into the seam between the upper and lower part and enlarge the gap all around.
- Pull the top off the bottom, paying attention to the axes of the controller and the slider.
 - ⓘ This may require some force.
- Lift the top off and put it aside.

Step 7



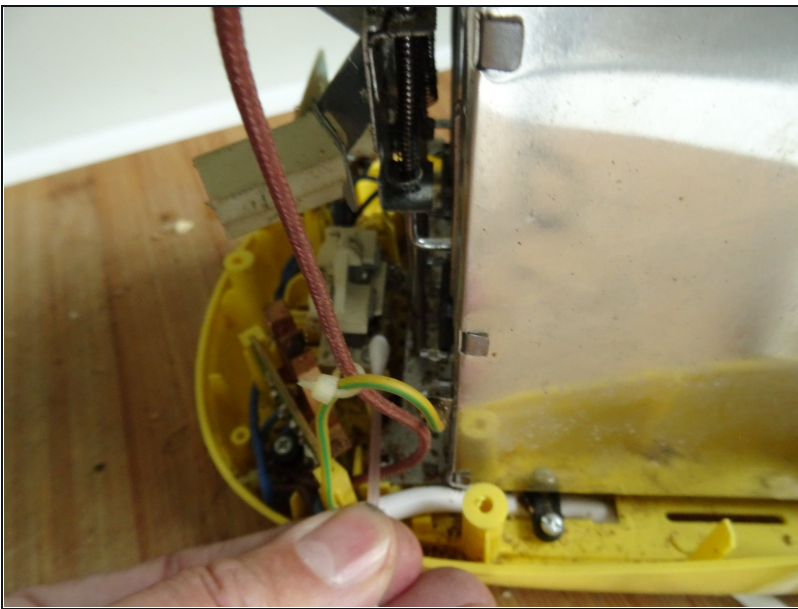
- Here are the main internal parts:
 - The contacts for the heating wires. They are switched when the slider moves down
 - The timer. The longer the time, the darker the toast.
 - The holding magnet, it's here where you have to look for the solution.

Step 8



- ① There is an iron tilting device on the magnet, here embedded in a molded plastic part. When the magnet pulls in, it holds the hook on the slide.
- Thoroughly clean the space between the magnet and the iron holder. Use a cotton swab with alcohol.

Step 9



⚠ Caution mains voltage: do not touch conductive parts!

- Insert the power plug and test whether your repair was successful.
- Pull the power plug again and clean the toaster thoroughly before assembling

To reassemble your toaster, follow these instructions in reverse order.