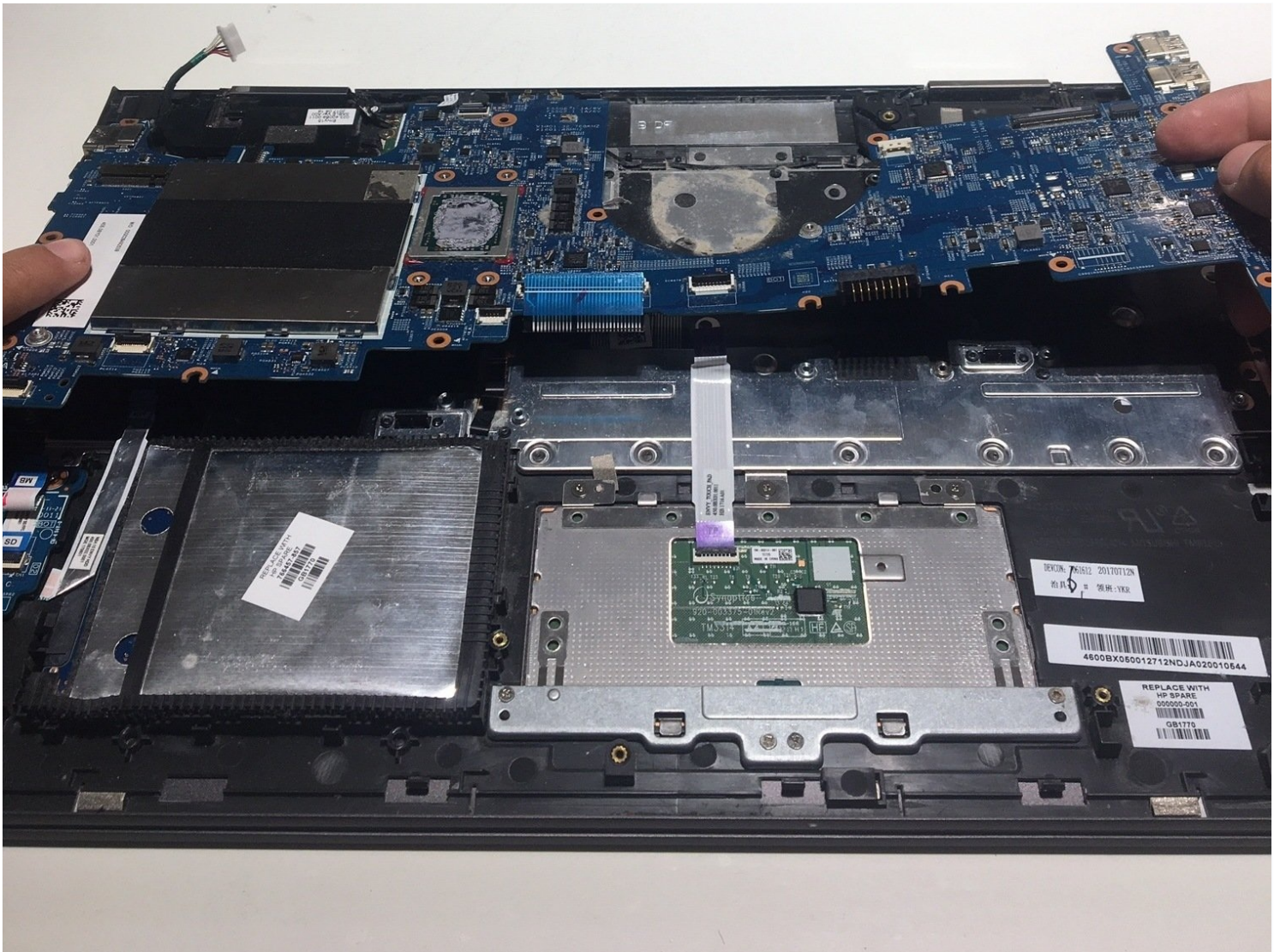




# HP Envy x360 15m-bq021dx Motherboard Replacement

Follow this guide to replace the motherboard of...

Written By: Hunter Reihart



# INTRODUCTION

Follow this guide to replace the motherboard of your HP Envy x360 15m-bq021dx. A motherboard is the “heart” of the computer. It is also known as the primary printed circuit board. This engages all of the computer’s components, allowing the computer to operate. This guide will show in-depth details on how to safely remove a motherboard.

## TOOLS:

Phillips #0 Screwdriver (1)

T5 Torx Screwdriver (1)

Suction Handle (1)

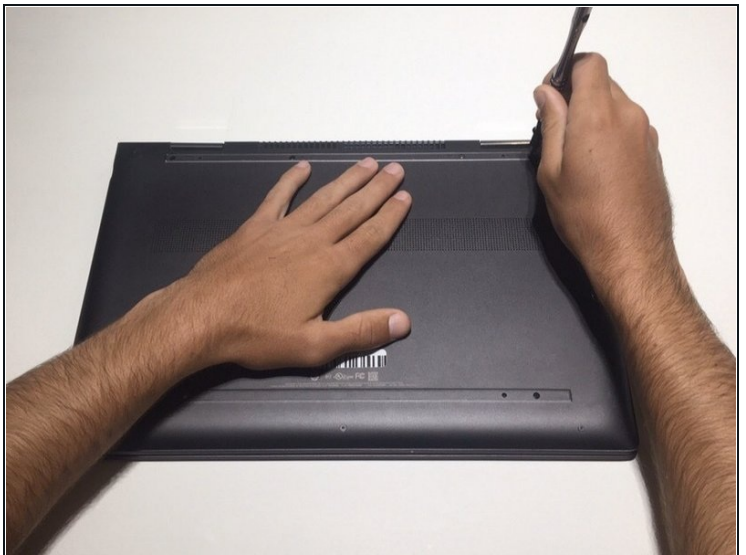
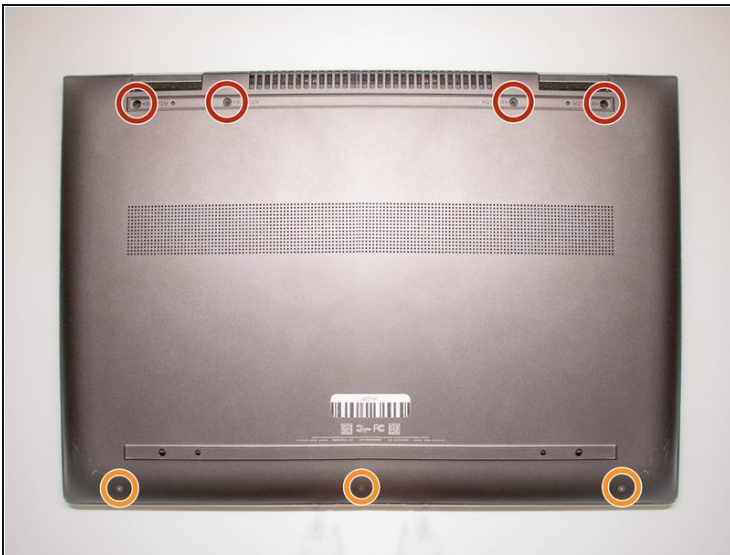
Spudger (1)

Tweezers (1)

iFixit Opening Tool (1)

Phillips #1 Screwdriver (1)

## Step 1 — Battery



- On the back panel of the device, remove the four (4) M2.5xL6 screws at the top of the photo using a Phillips #0 screwdriver.
- Unscrew the three (3) screws at the bottom of the photo using a T5 Torx screwdriver.

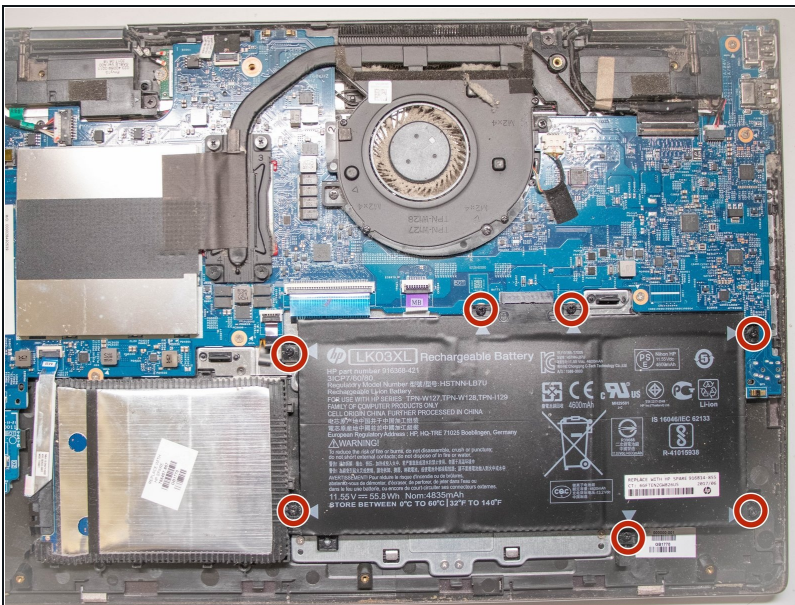


## Step 2



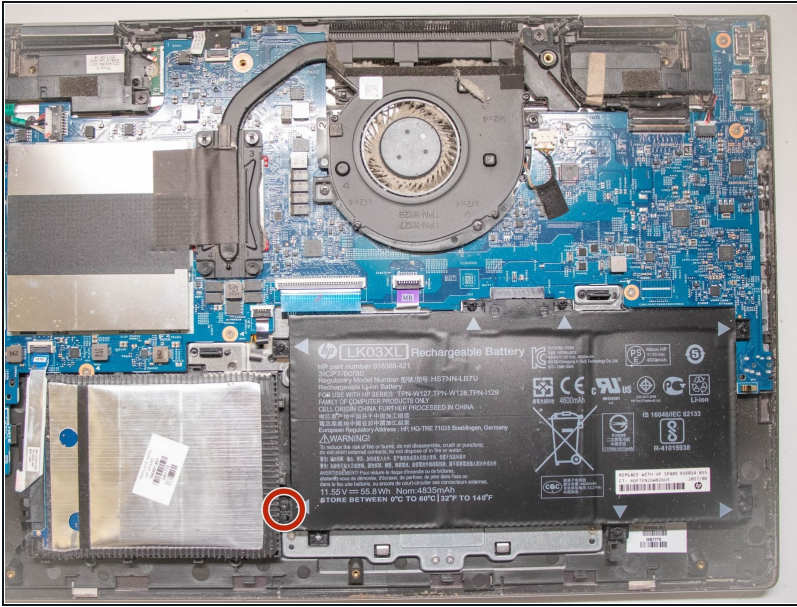
- To remove the back cover, use the black spudger to lift up on the edges of the cover.
- Use a suction cup to assist in lifting the back cover

## Step 3



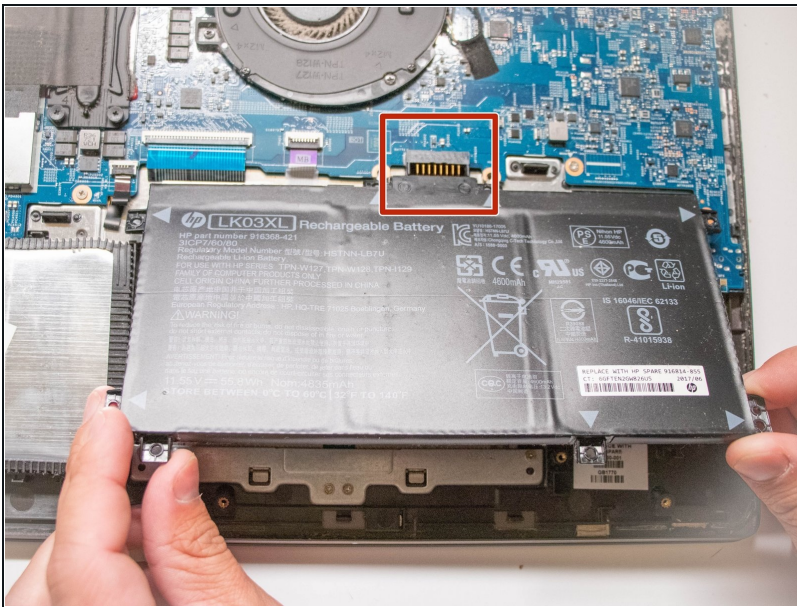
- Use the Philips #0 screwdriver to remove six (6) M2.0x3.2 screws from battery.

## Step 4



- Using the Philips #0 screwdriver, remove the final screw from the battery connected to the SSD storage unit.

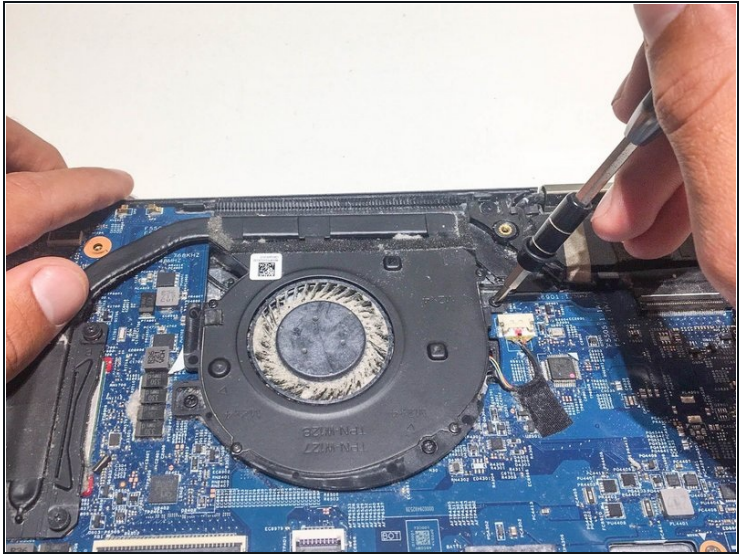
## Step 5



- Lift and pull the front of the battery up and out (away from the connector) to remove.



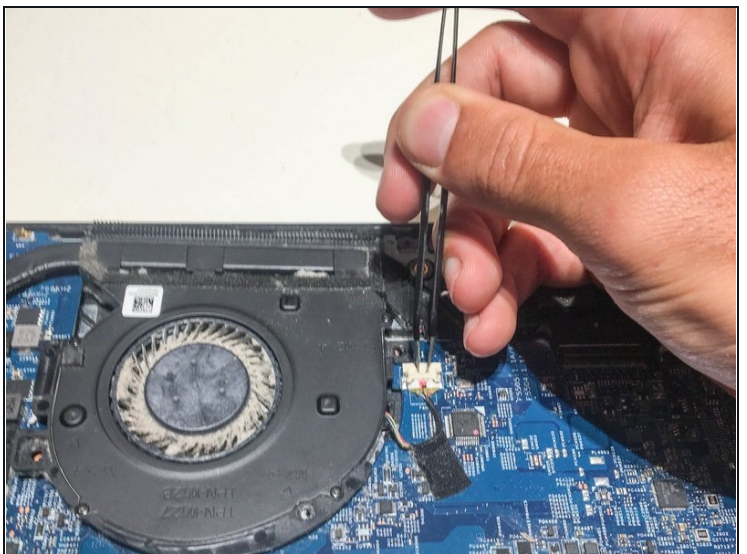
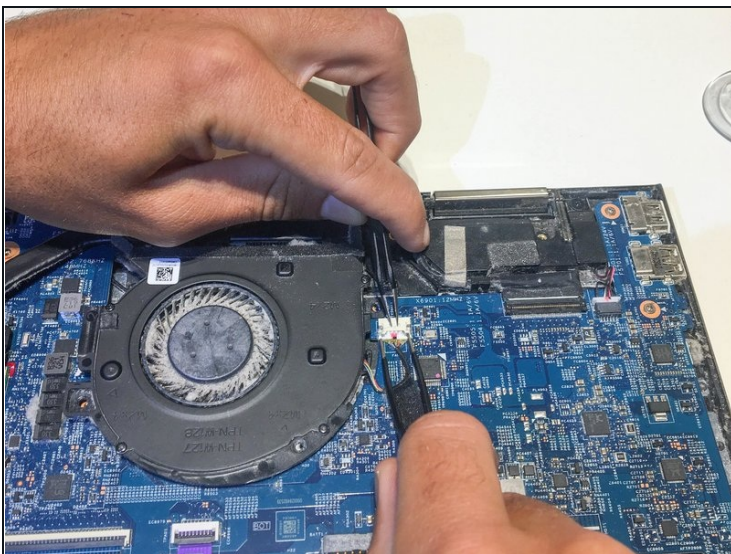
## Step 6 — Cooling Fan



- Using a Philips #0 screwdriver, remove the three M2x4 screws located around the cooling fan as shown in this picture.

⚠ Be careful as the fan might be sharp in some places when removing it.

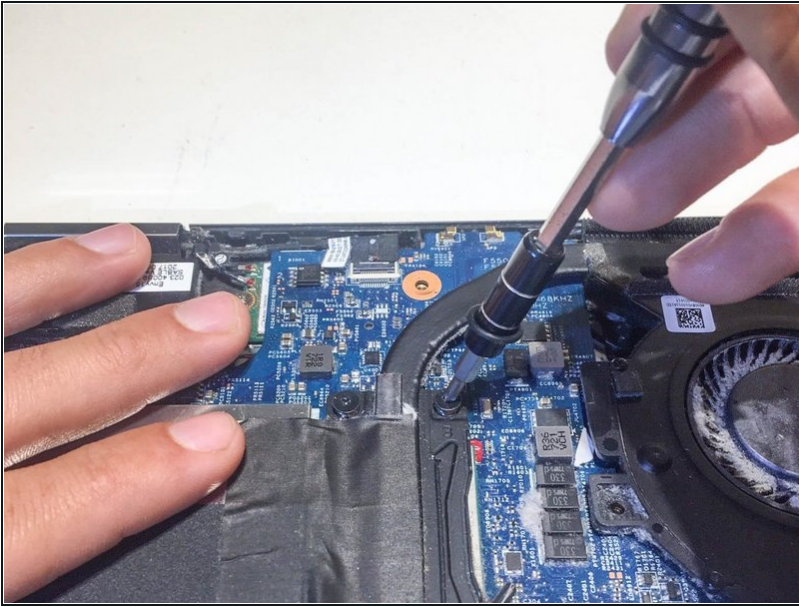
## Step 7



- Remove the connector clip with the tweezers.

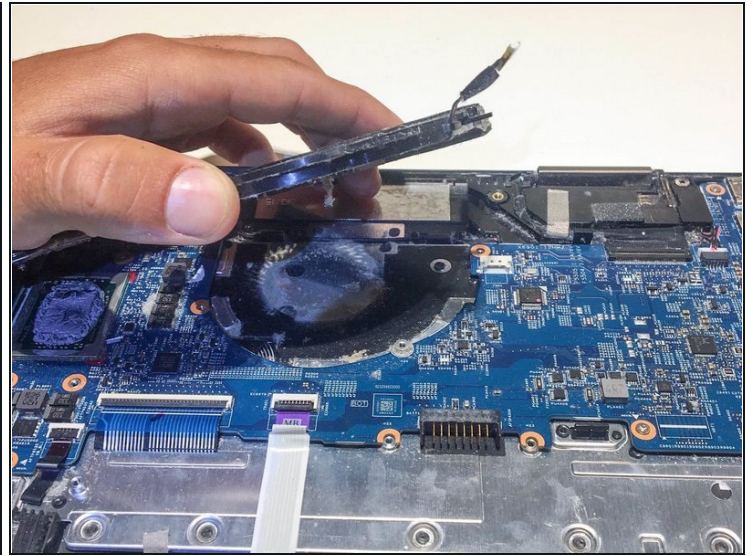
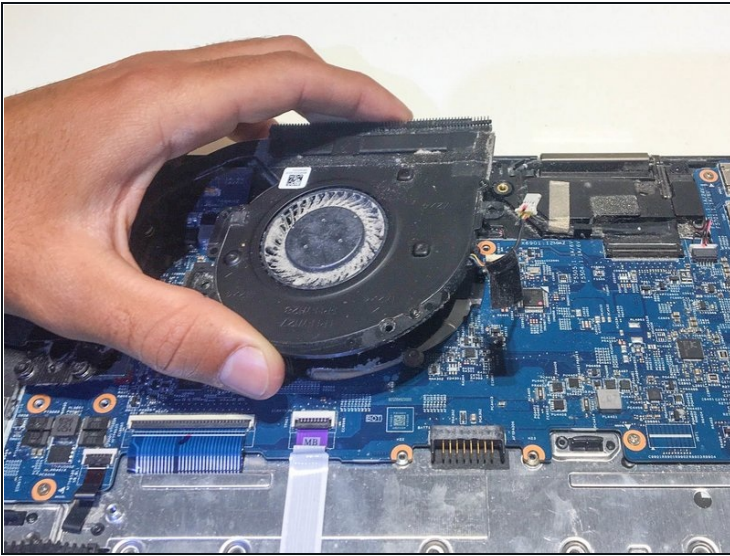


## Step 8



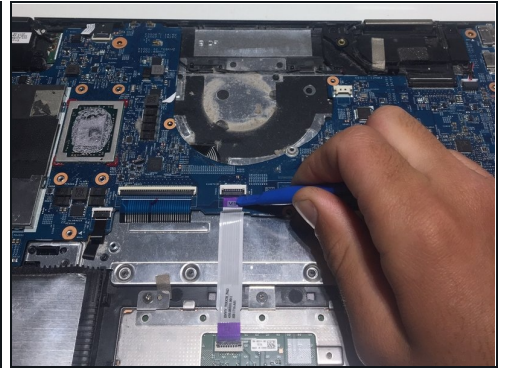
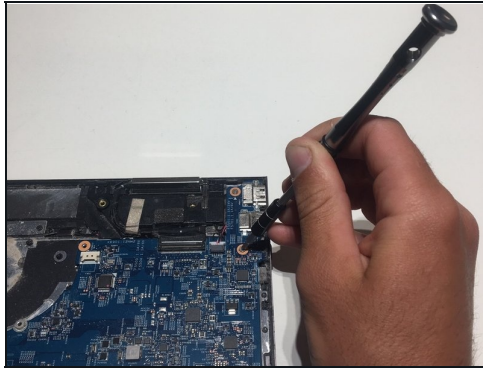
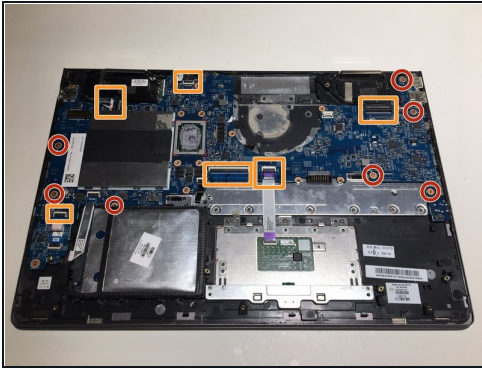
- Remove the four spring loaded screws with a Philips #1 screwdriver.

## Step 9



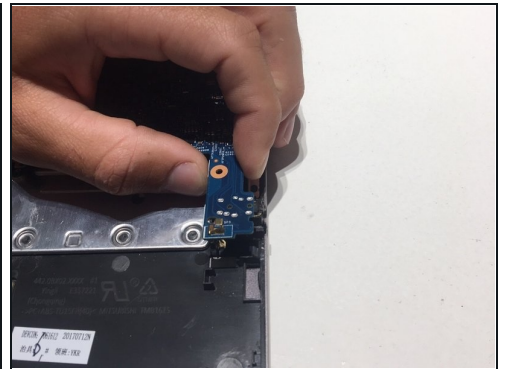
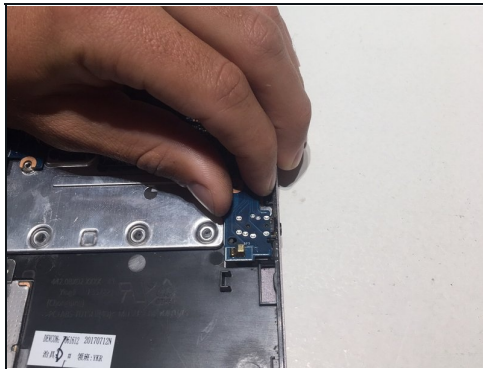
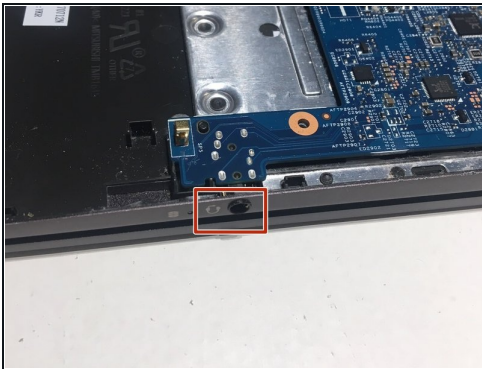
- Remove the cooling fan.

## Step 10 — Motherboard



- Using a Phillips #1, remove the seven M2.0x3.2 screws.
- Undo the six connections using the blue opening tool.

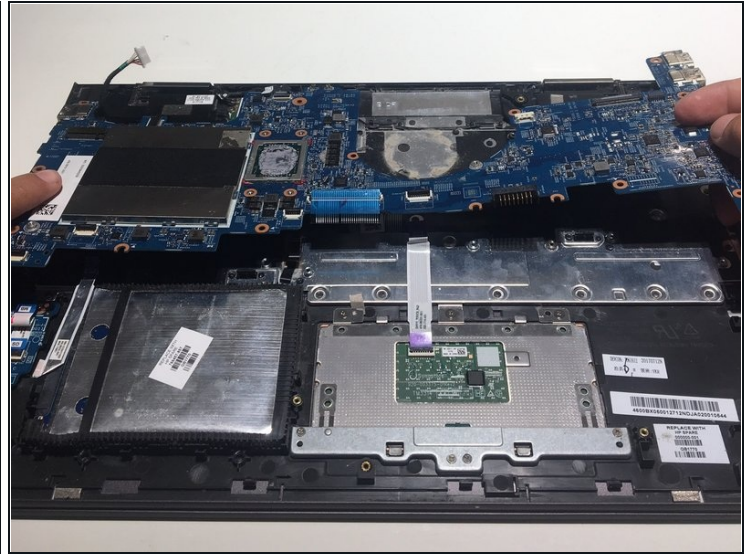
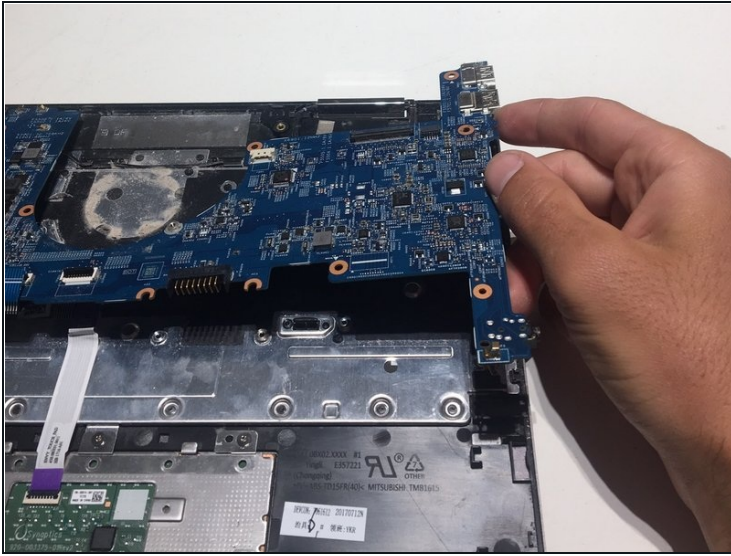
## Step 11



- Carefully remove the aux port from the frame of the computer as shown.



## Step 12



- Pull the mother board up and away from frame of the computer.

To reassemble your device, follow these instructions in reverse order.