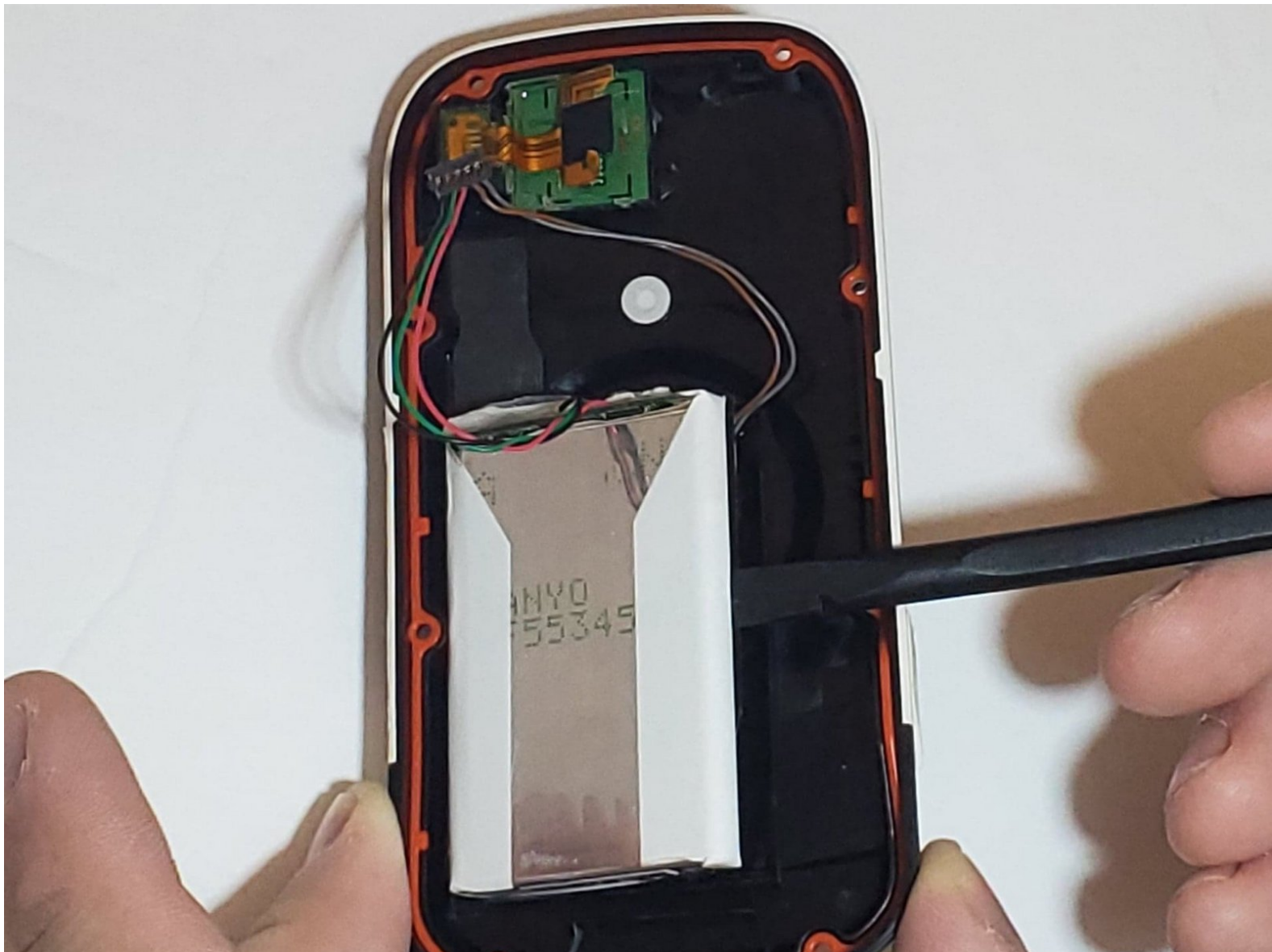




Garmin Edge 1000 Lithium-Ion Battery Replacement

This guide is intended to demonstrate how to replace the lithium ion battery in the Garmin Edge 1000.

Written By: Taylor McNees



INTRODUCTION

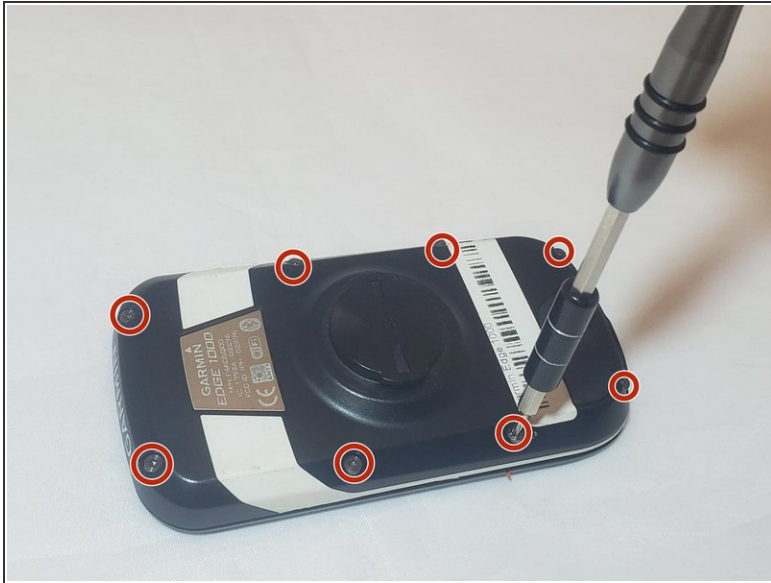
If your Garmin Edge 1000 has stopped powering on, or does not hold a charge, this guide will allow you to replace the lithium ion battery.




TOOLS:

- [T6 Torx Screwdriver](#) (1)
 - [Spudger](#) (1)
 - [Soldering Iron](#) (1)
 - [Flush Wire Cutters](#) (1)
 - [Wire Stripping/Crimping Tool](#) (1)
-

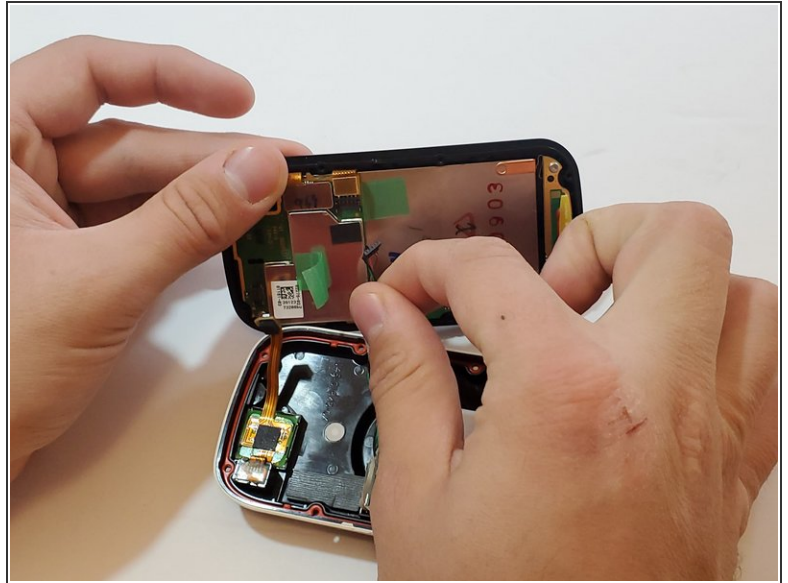
Step 1 — Back Cover



 Be sure the device is properly powered all the way off before starting the replacement.

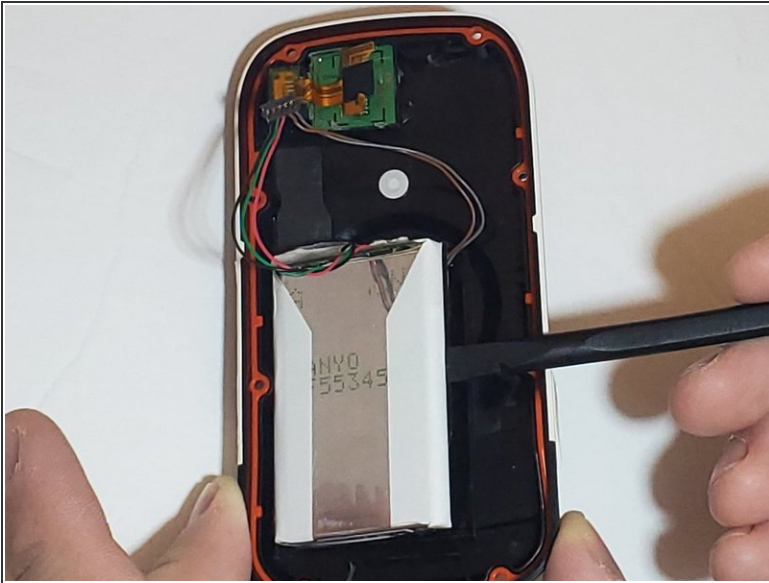
- Hold the device front side down. Remove the eight T6 Torx screws along the backside of the device.
- Pull the front side of the device apart from the back side.

Step 2



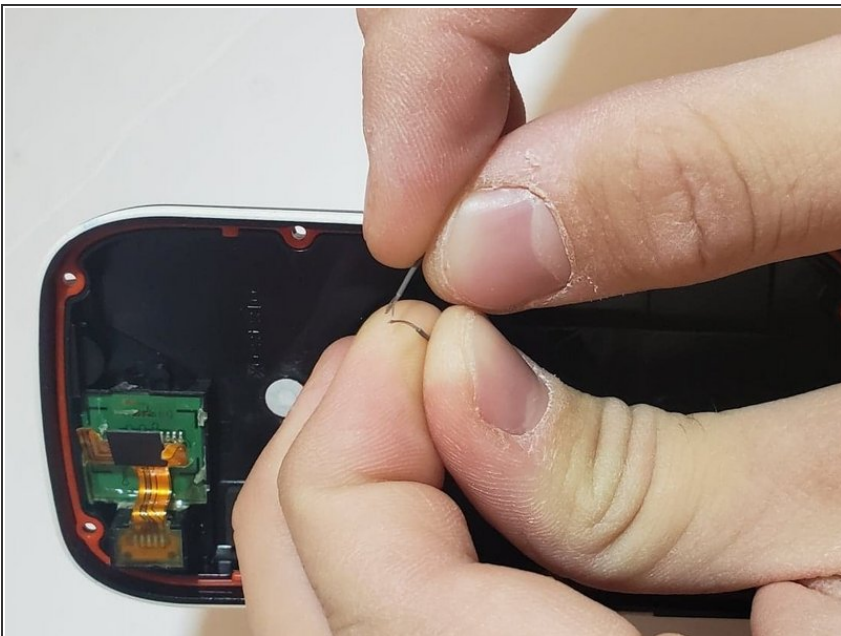
- Disconnect the bronze SIM card flex cable from the motherboard with your finger.
- Disconnect the battery cord to completely separate the front cover from the back cover of the device with your finger.

Step 3 — Lithium-Ion Battery



- Using the nylon spudger, pry the battery off of the back half of the device. Pull the battery away from the back cover.
- Cut the two wires that connect the back cover to the battery using a pair of wire cutters.

Step 4



- Strip the ends of the red and silver wires connected to the back panel of the device using a pair of wire strippers.

Step 5



- ✦ Solder the silver wire from the new battery with the silver wire connected to the back panel of your device.
- Repeat these steps with the red wire from the new battery and the wire from the back panel.

To reassemble your device, follow these instructions in reverse order.