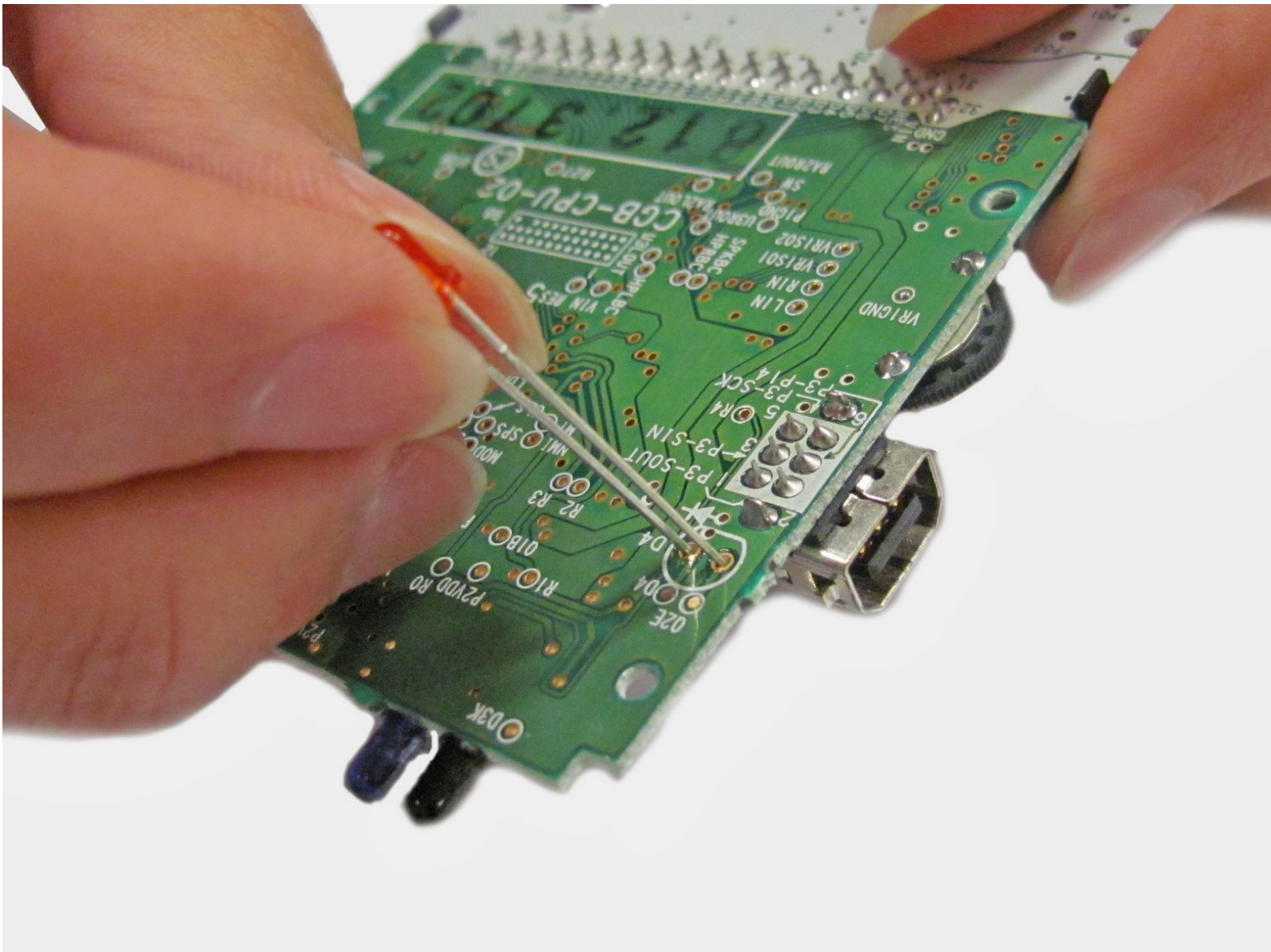




# Game Boy Color Power LED Replacement

This guide shows you how to repair the Game Boy Color's power LED.

Written By: Alex Wu



## INTRODUCTION

This guide will show you how to repair the Game Boy Color's power LED. The power led glows red when the device is turned on indicating that it is receiving power.

### TOOLS:

- [Desoldering Braid](#) (1)
- [Phillips #1 Screwdriver](#) (1)
- [Soldering Iron](#) (1)
- [Spudger](#) (1)
- [Tri-point Y0 Screwdriver](#) (1)
- [Flush Wire Cutters](#) (1)

### PARTS:

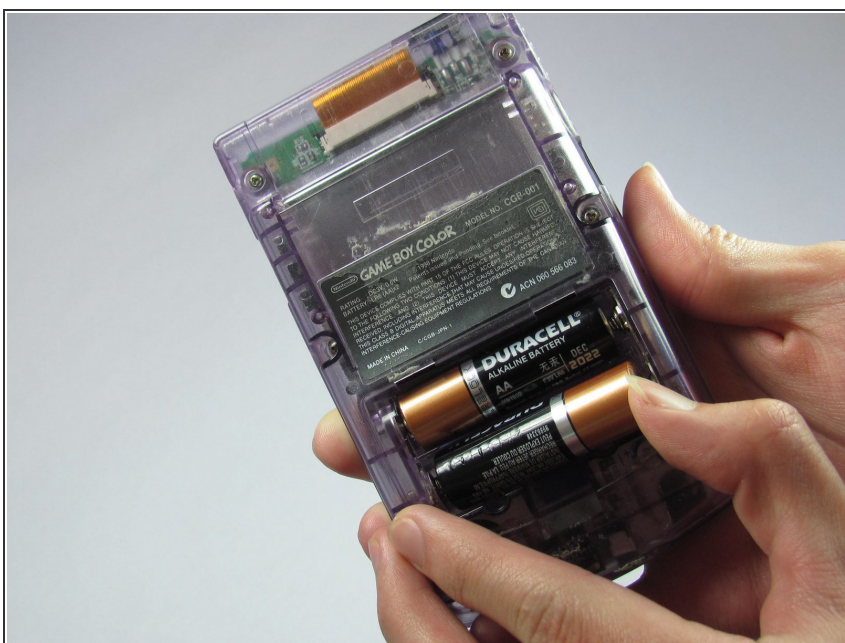
- [Replacement LED](#) (1)

## Step 1 — Battery



- Locate the battery compartment on the back of the Game Boy Color.
- Push down on the tab and hinge the cover downwards and outwards to remove the battery cover.

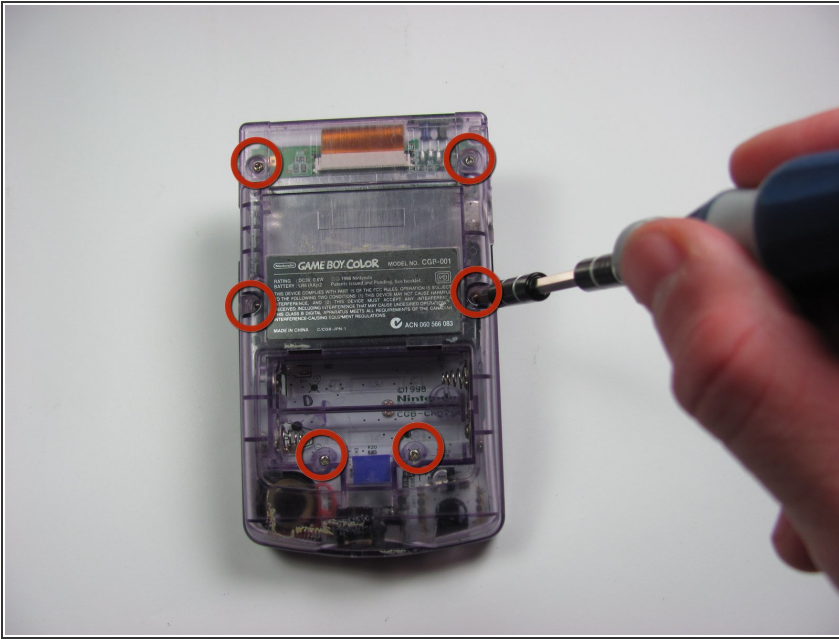
## Step 2



- Remove the batteries from the battery compartment.

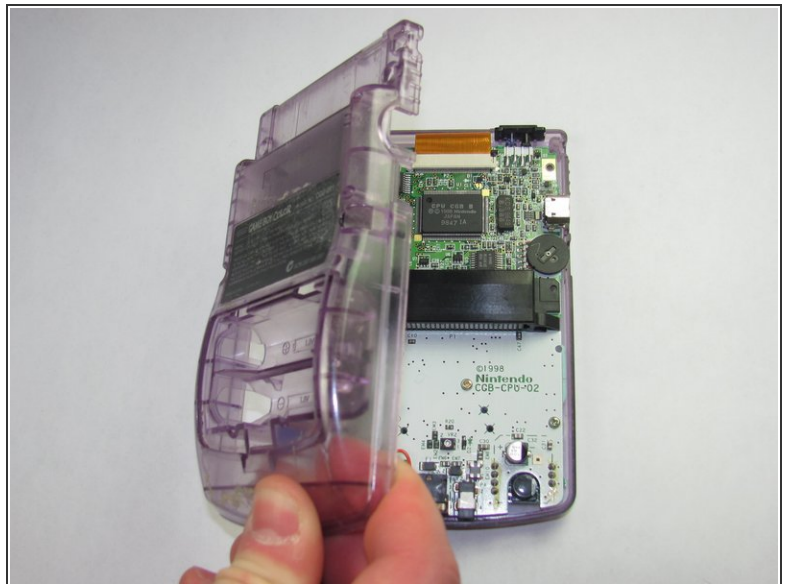


### Step 3 — Back Housing



- Using a Y1 screwdriver, remove the six screws on the back of the device as pictured. The bottom two screws are located inside of the battery compartment.

### Step 4



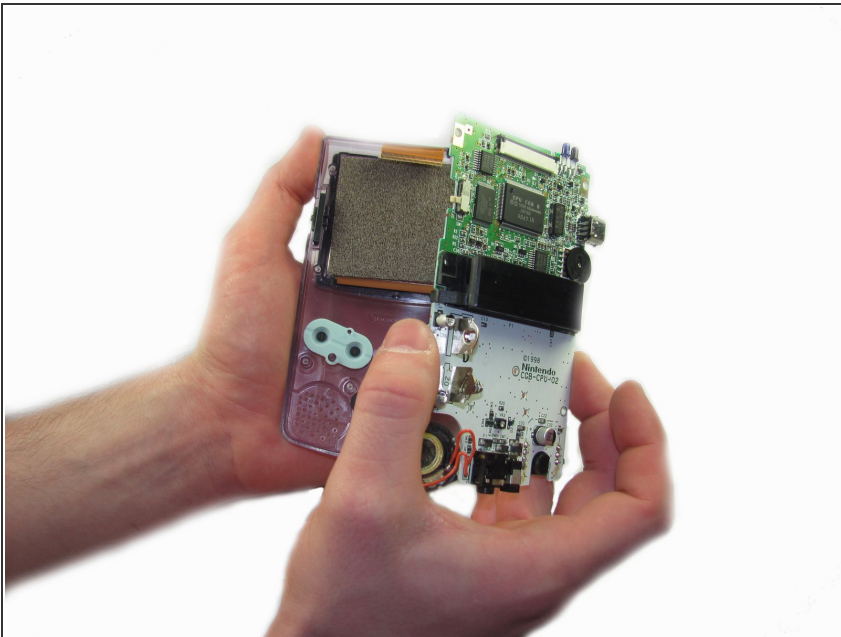
- Gently lift and separate the back housing from the rest of the device. Now you've got the back housing out!

## Step 5 — Motherboard



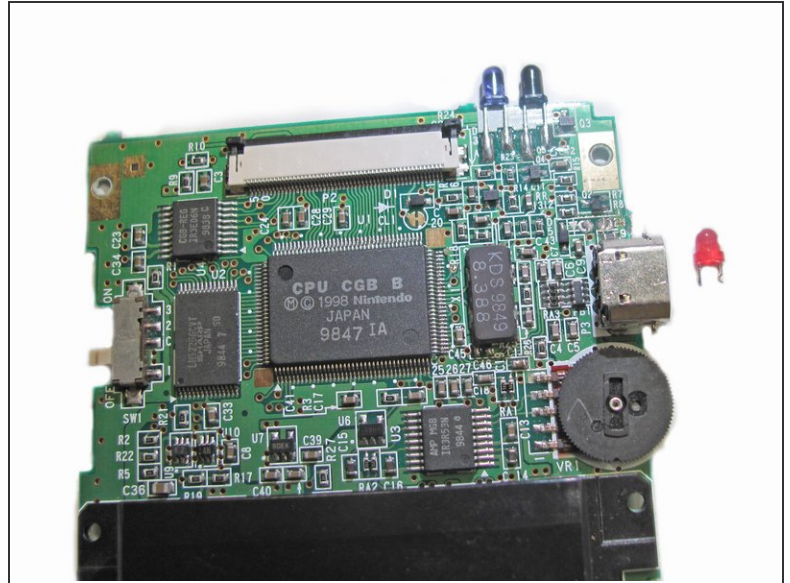
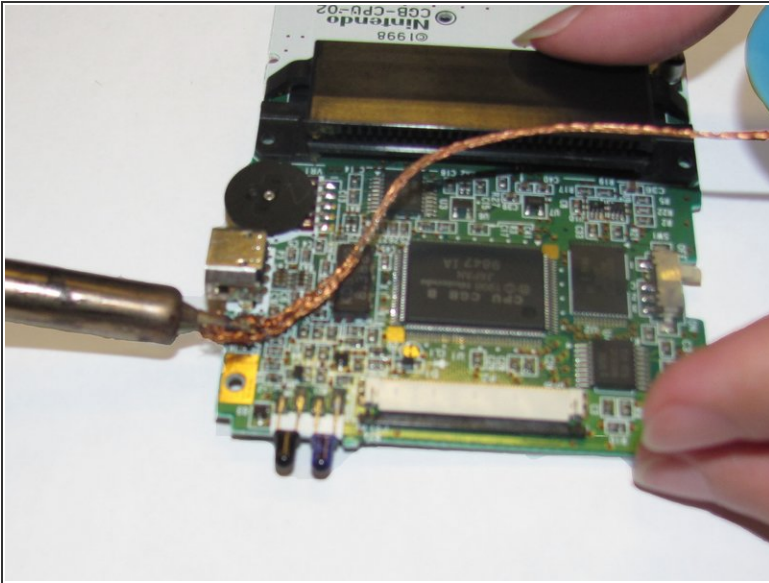
- Using the Phillips #1 screwdriver, remove the 3 screws shown in the picture.

## Step 6



- Gently lift the motherboard from the front housing.

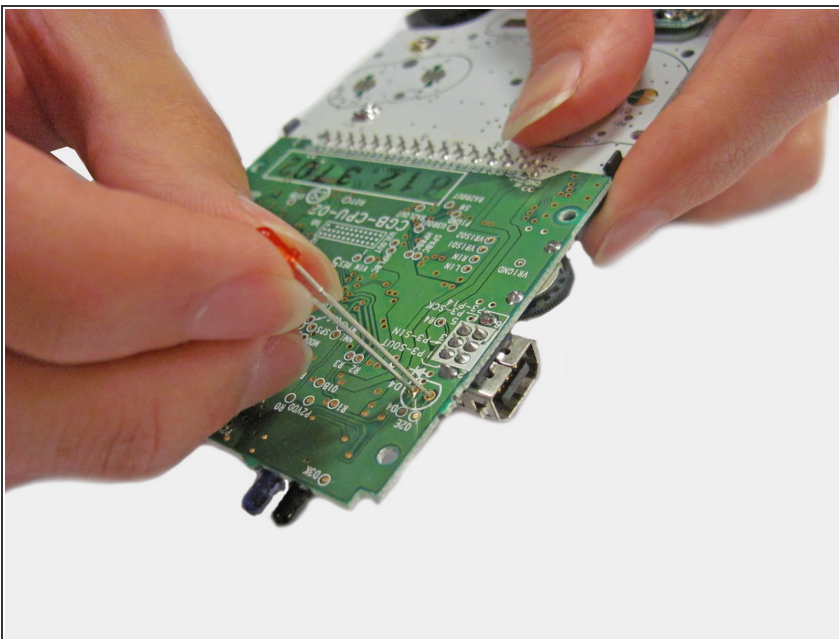
## Step 7 — Power LED



- Unsolder and remove the LED from the circuit board.

[!\[\]\(cbe2492b119e39e02a1dab2af4a4b296\_img.jpg\) Click here for a guide on how to solder and unsolder](#)

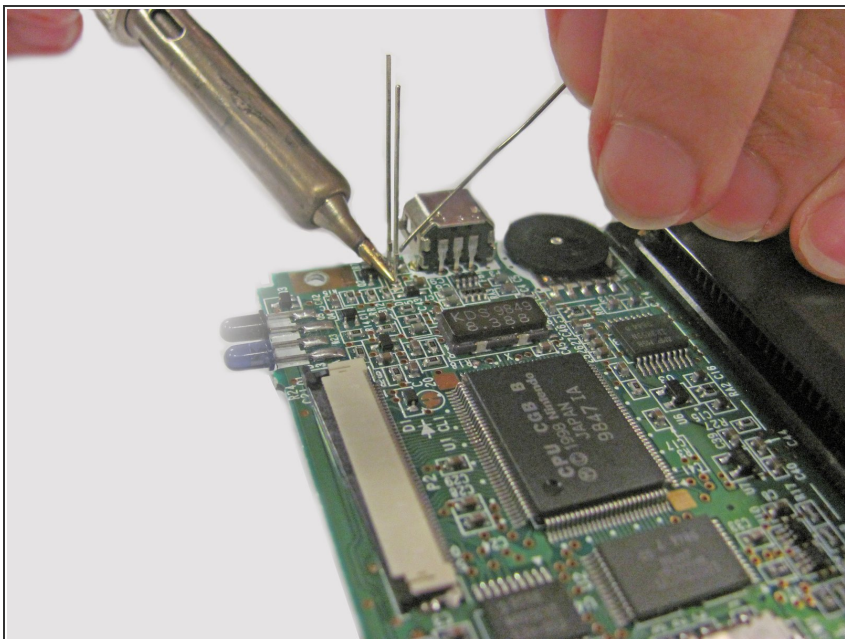
## Step 8



- Insert new LED into the circuit board.
- ⚠ Make sure that the LED is in the correct orientation. The longer leg of the LED is the positive end, while the shorter leg is the negative end.
- The positive lead should go through the hole closest to the edge of the circuit board.

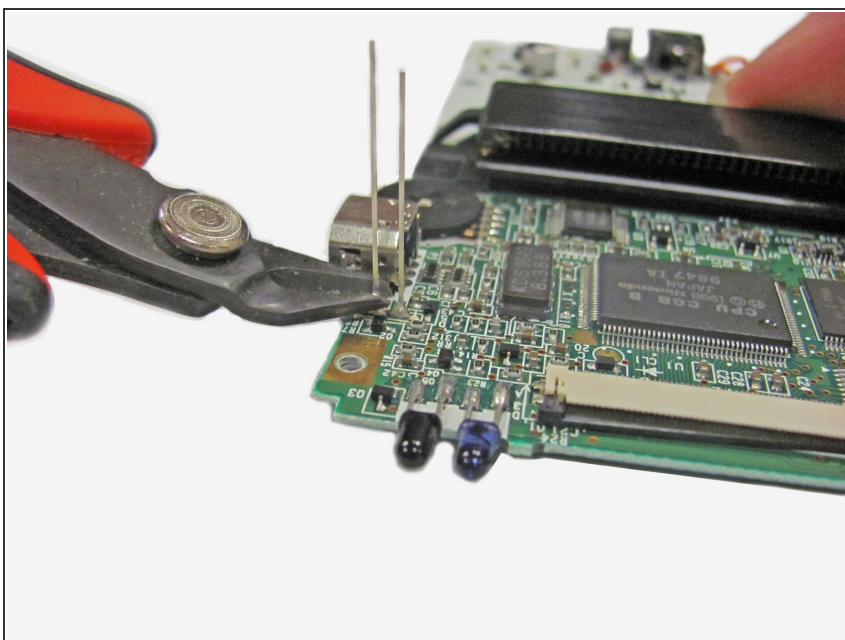


## Step 9



- Solder the leads of the new LED to the circuit board.

## Step 10



- Cut the excess ends of the LED legs using the wire cutters.

To reassemble your device, follow these instructions in reverse order.