



Xiaomi Mi 8 Fingerprint Sensor Replacement

How to remove or replace a broken or defective fingerprint sensor in the Xiaomi Mi 8.

Written By: Dominik Schnabelrauch



INTRODUCTION

Use this guide to remove or replace a broken or defective fingerprint sensor in the Xiaomi Mi 8.

You'll need **replacement adhesive** to reattach components when reassembling the device.

TOOLS:

- [iOpener](#) (1)
 - [iFixit Opening Picks set of 6](#) (1)
 - [Spudger](#) (1)
 - [Suction Handle](#) (1)
 - [Tweezers](#) (1)
-

Step 1 — Rear Glass



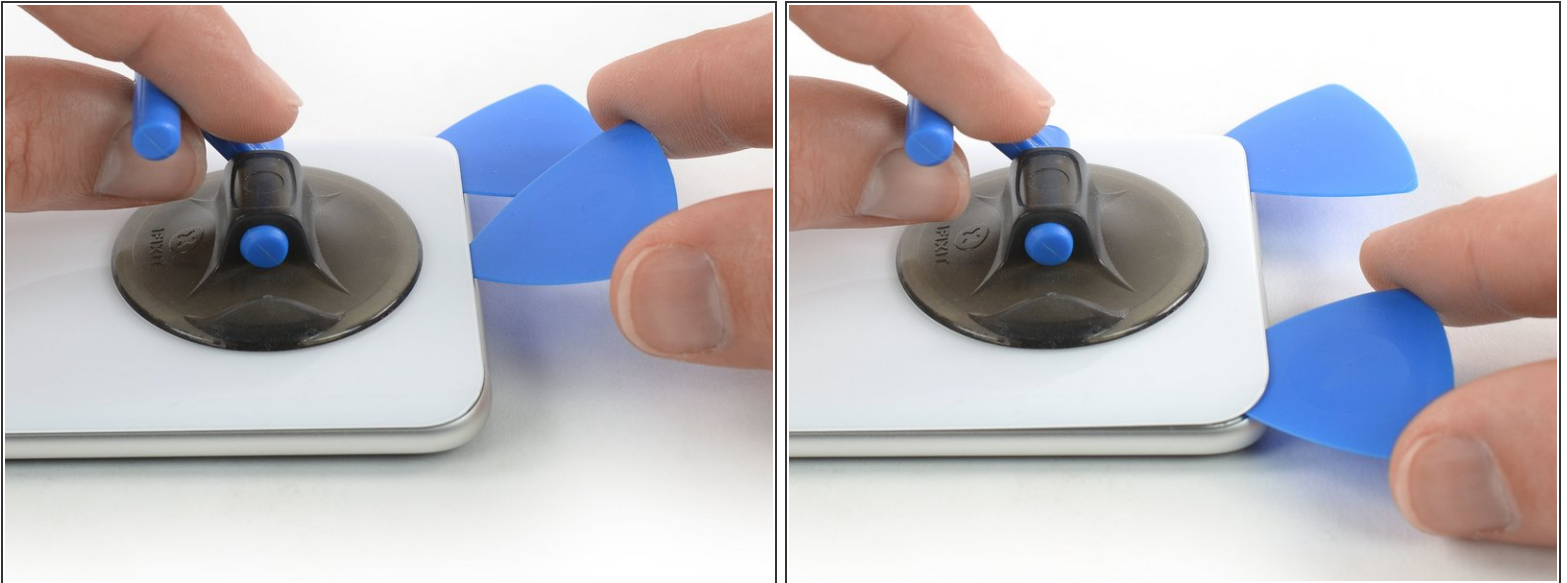
- Apply a [heated iOpener](#) to the rear glass to loosen the adhesive beneath the edges. Apply the iOpener for at least two minutes.

Step 2



- Secure a suction handle to the lower edge of the rear glass, as close to the edge as possible.
 - ❗ If the phone's rear glass is cracked, the suction handle may not stick. Try [lifting it with strong tape](#), or superglue the suction handle in place and allow it to cure so you can proceed.
- Lift the rear glass with the suction handle to create a gap between the glass and the frame.
- Insert an opening pick into the gap.
 - ❗ If the glass won't budge, apply more heat to further soften the adhesive. Follow the iOpener instructions to avoid overheating.
- Slide the opening pick to the bottom right corner of the phone.

Step 3



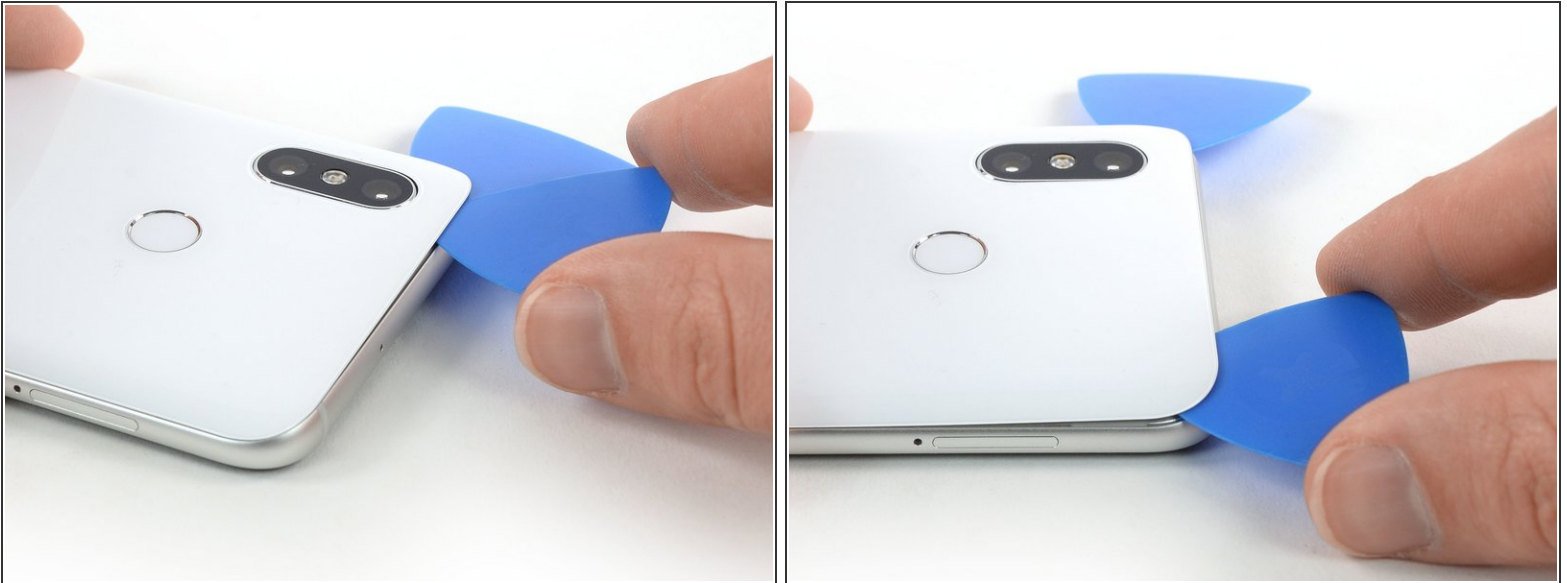
- Insert a second opening pick and slide it to the bottom left corner to cut the adhesive.
- Leave the opening picks in place to prevent the adhesive from resealing.

Step 4



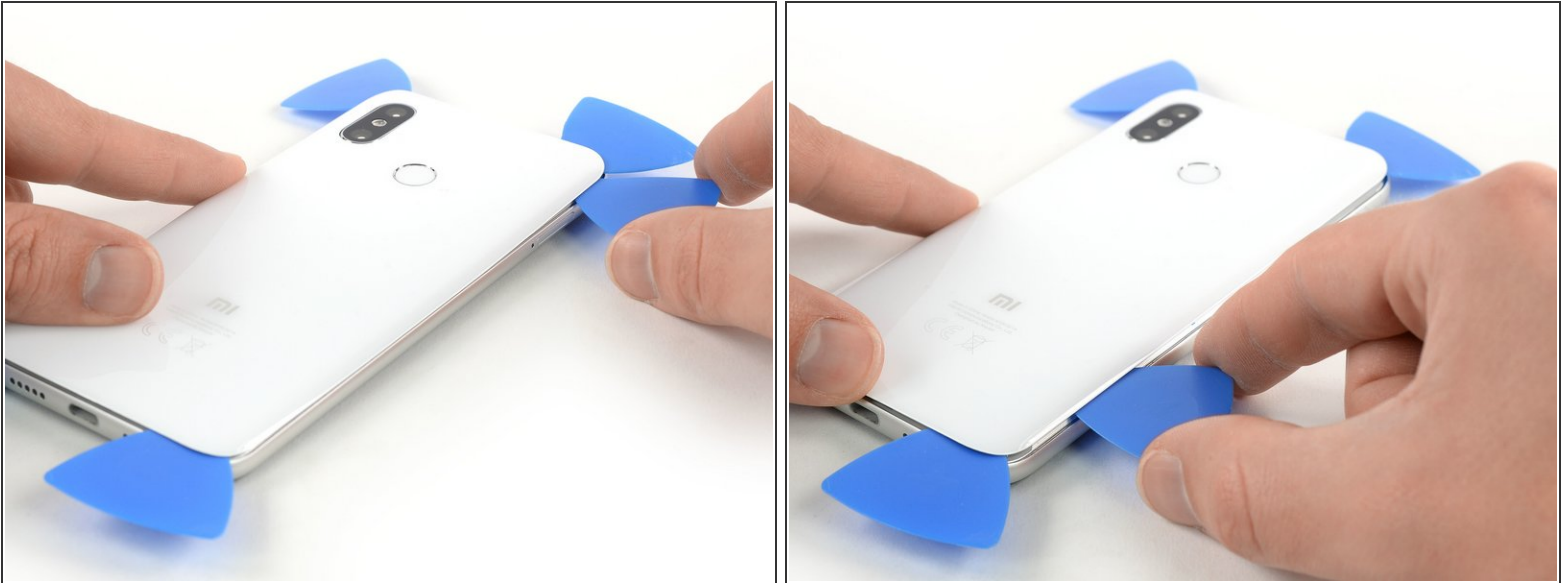
- Insert a third opening pick at the bottom left corner.
- Start to slide the opening pick from the bottom left corner along the side of the Xiaomi Mi 8 to cut the adhesive.
- ⓘ Be aware of the fingerprint flex cable and only insert the tip of the opening pick. If insert too deep, you can cut the cable by accident.
- As the adhesive cools down it gets harder to cut. If necessary [use your iOpener](#) to reheat it.
- Leave the opening pick in the top left corner to prevent the adhesive from resealing.

Step 5




- Insert a fourth opening pick under the top left corner of the rear glass.
- Slide the opening pick along the top to cut the adhesive.
- Leave the opening pick in the top right corner to prevent the adhesive from resealing.

Step 6



- Insert a fifth opening pick at the top right corner of the phone.
- Slide the opening pick along the right edge to cut the remaining adhesive.

 Don't try to remove the rear glass all the way yet. The fingerprint flex cable is still connected to the motherboard.

Step 7



- Carefully lift the rear glass and fold it to the left side to access the fingerprint flex connector.

Step 8



- Use a spudger to pry up and disconnect the fingerprint flex cable.
- Remove the rear glass.
- ✦ Before installing new adhesive for reassembly, remove any remaining adhesive from the phone, and clean the glued areas with isopropyl alcohol and a lint-free cloth.
- ✦ After installing the rear glass, apply pressure for several minutes to help the adhesive form a good bond. A stack of heavy books on top of the phone works well.

Step 9 — Fingerprint Sensor



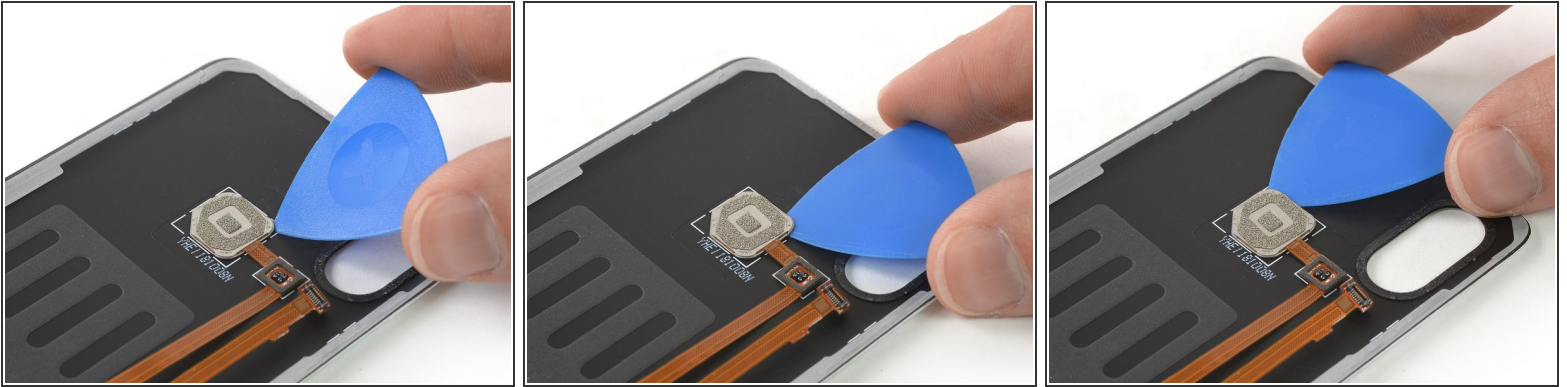
- Apply a [heated iOpener](#) to the rear glass to loosen the adhesive beneath the fingerprint sensor. Apply the iOpener for at least two minutes.

Step 10



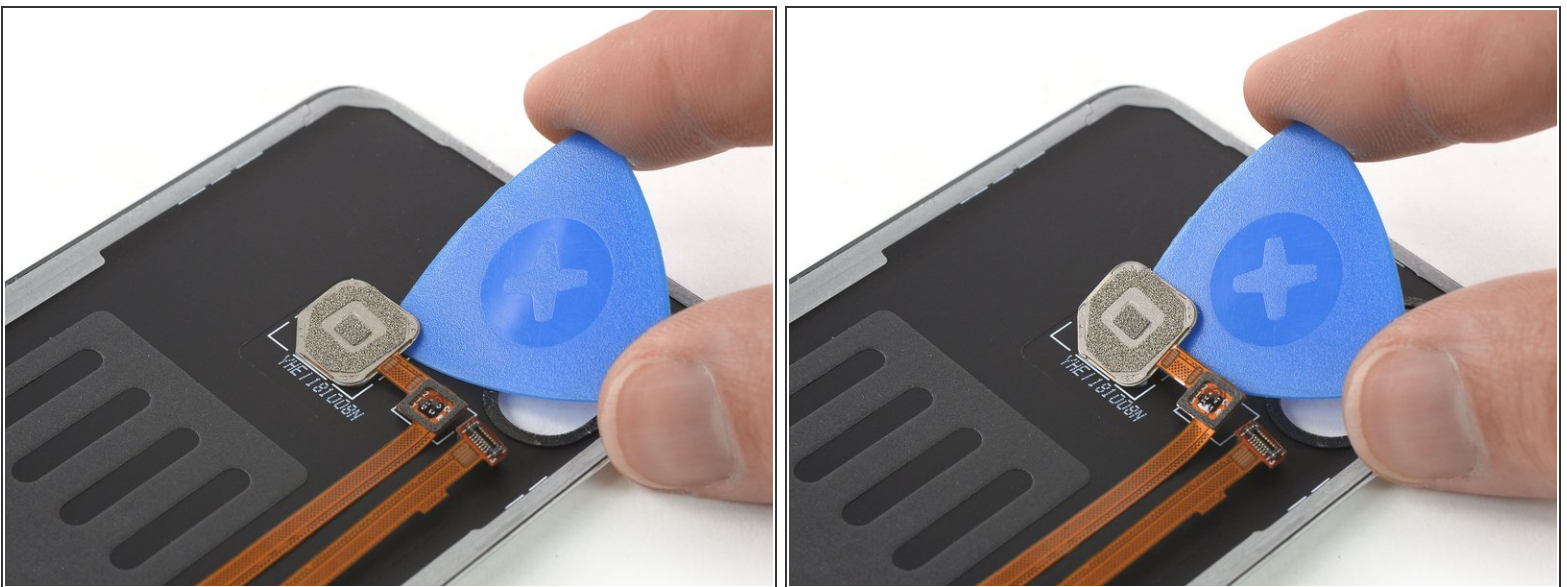
- The fingerprint flex cable is mildly glued to the rear glass. Carefully slide an opening pick underneath to separate it from the glass.

Step 11



- Insert an opening pick under the top right corner of the fingerprint sensor.
- Slide the opening pick along the top edge of the sensor to cut the adhesive.

Step 12



- Slide the opening pick under the center of the sensor and twist it sideways to pry it up until you can get a good grip.

Step 13



- Remove the fingerprint sensor.

If possible, turn on your device and test your repair before installing new adhesive and resealing.

To reassemble your device, follow these instructions in reverse order. Apply new adhesive where necessary after cleaning the relevant areas with isopropyl alcohol (>90%).

Take your e-waste to an [R2 or e-Stewards certified recycler](#).

Repair didn't go as planned? Check out our [Answers community](#) for troubleshooting help.