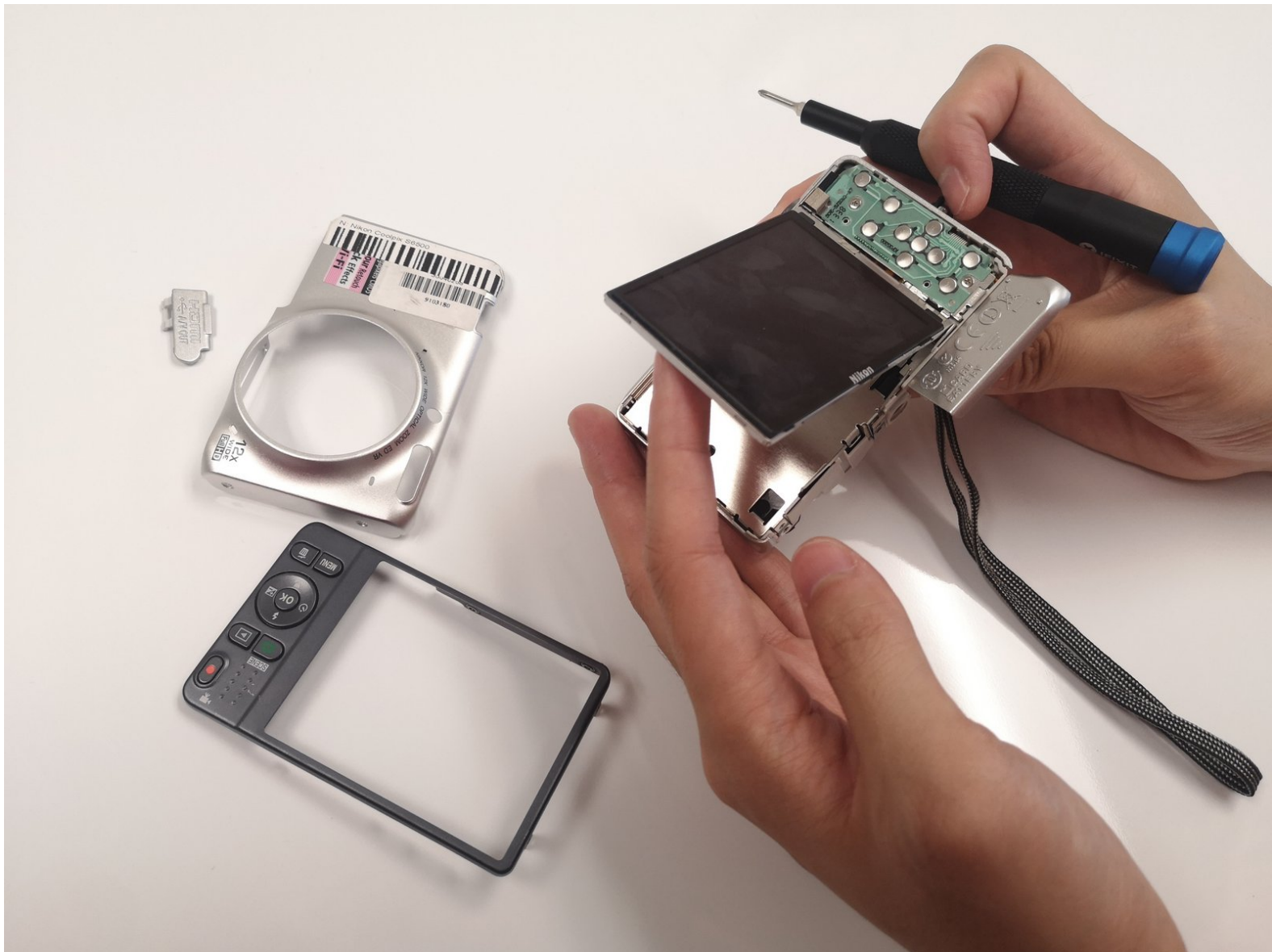




Nikon Coolpix S6500 Display Replacement

This guide shows the step by step process to remove the display of your Nikon Coolpix S6500.

Written By: Qingyu Wu



INTRODUCTION

If you need to replace a damaged display with a new display of the Nikon Coolpix S6500 you can do it with the help of this guide. For this guide, you will need a Phillips #1 Screwdriver to remove the screws. Store the screws safely. Remove the case and display carefully. Before beginning, make sure to power off the camera completely and disconnect it from any external power source.



TOOLS:

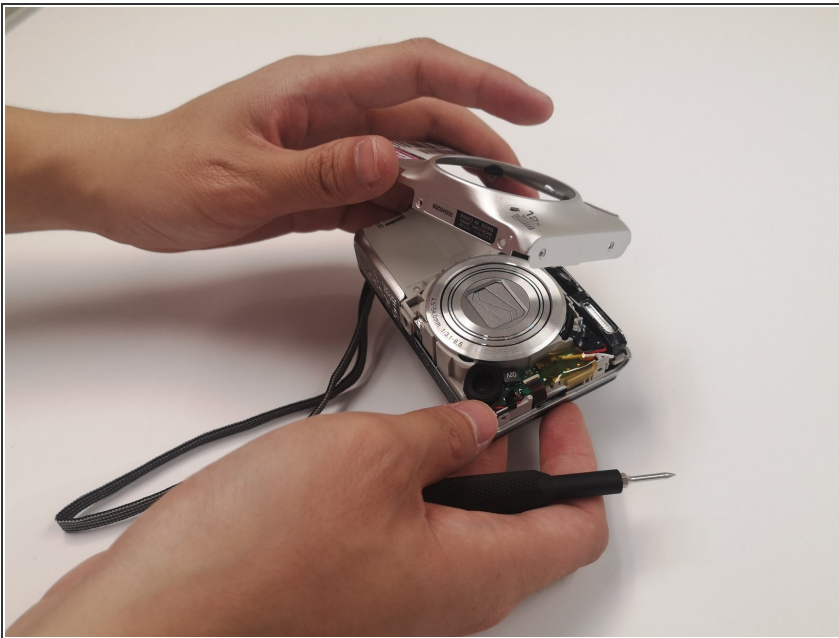
- [Phillips #1 Screwdriver](#) (1)
-

Step 1 — Case



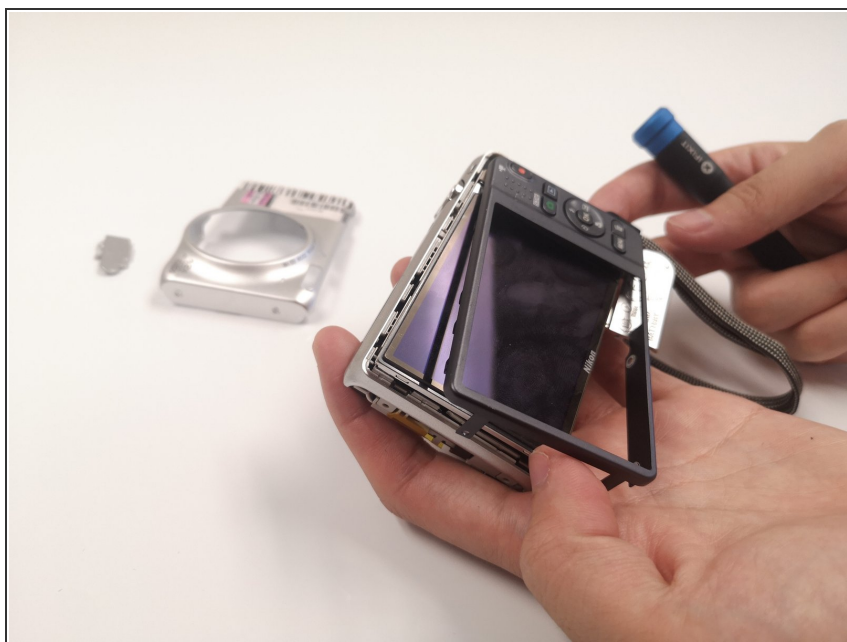
- Remove all seven 3mm screws by using the Phillips #1 screwdriver.

Step 2



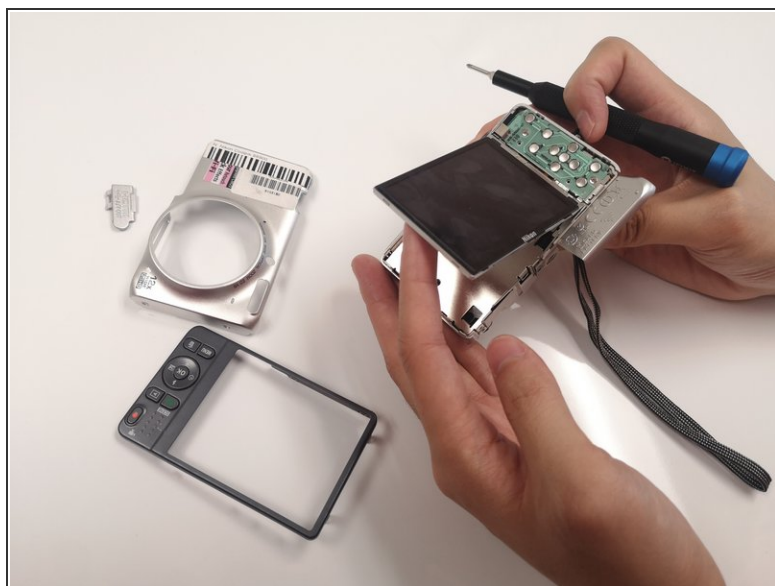
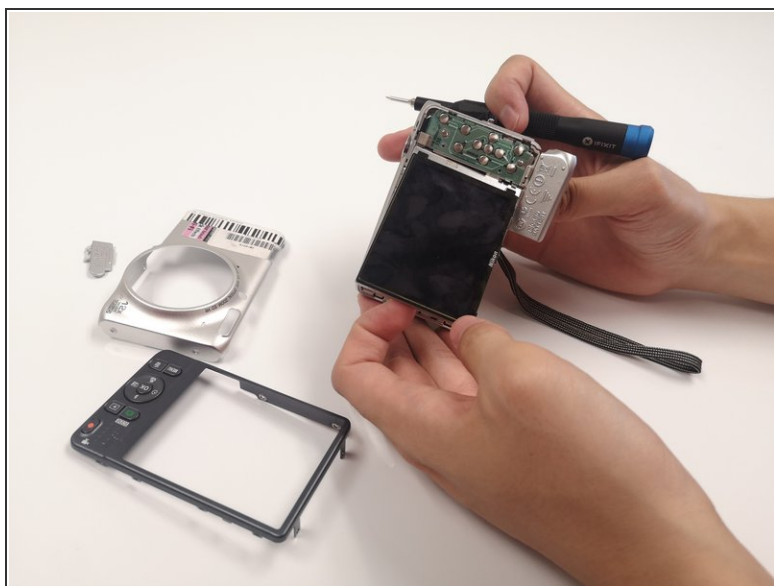
- Remove the case from the camera.

Step 3 — Display



- Remove the display frame.

Step 4



- Take out the display.

To reassemble your device, follow these instructions in reverse order.