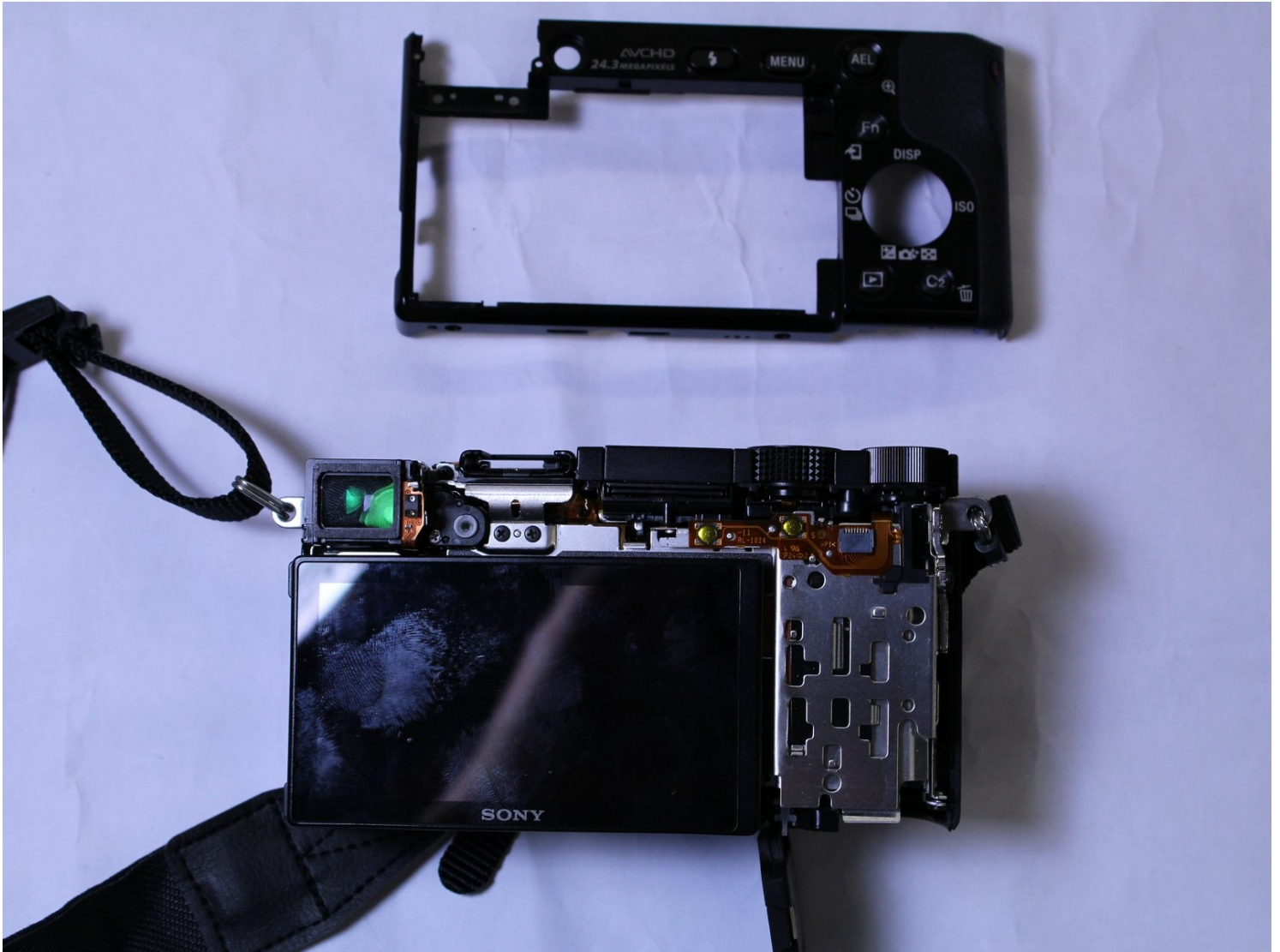




# Sony α6000 Back Case Replacement

This guide will provide you with a detailed...

Written By: Ryan Bilitski



# INTRODUCTION

This guide will provide you with a detailed process on how to replace the back case of a Sony a6000 camera. Prior to replacing the case, make sure to remove the battery. Steps 1-4 will guide you on how to take out the battery and steps 5-12 guide you on how to replace the back case. The recommended tools for this procedure are a screwdriver, opening tools, a magnetic project mat, and gloves.

---

## TOOLS:

[Phillips #00 Screwdriver](#) (1)

[iFixit Opening Tool](#) (1)

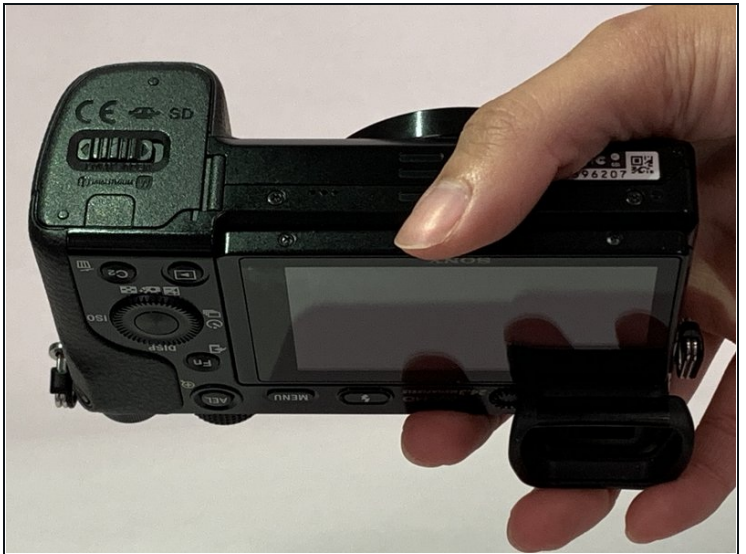
[Magnetic Project Mat](#) (1)

*To hold small screws.*

[ESD Gloves](#) (1)

---

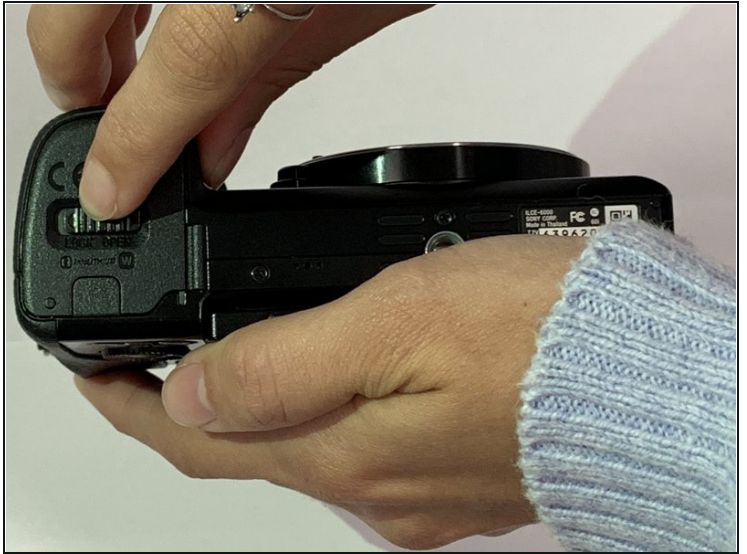
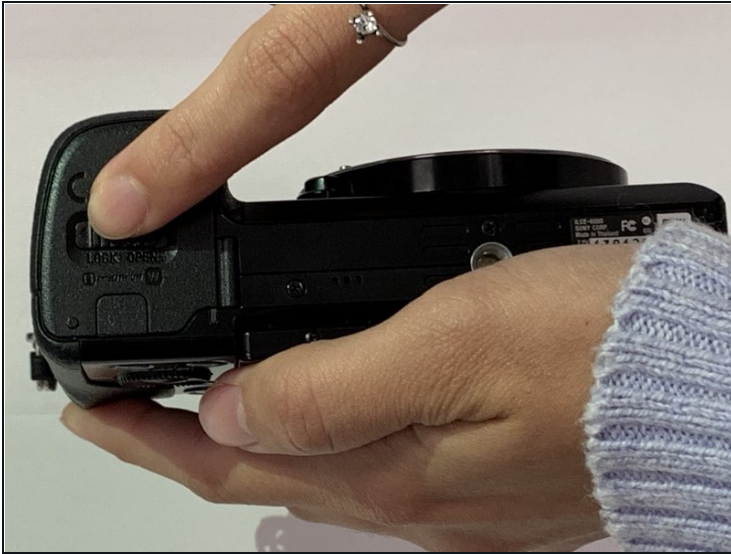
## Step 1 — Battery



- Begin by placing the camera facing upside down.

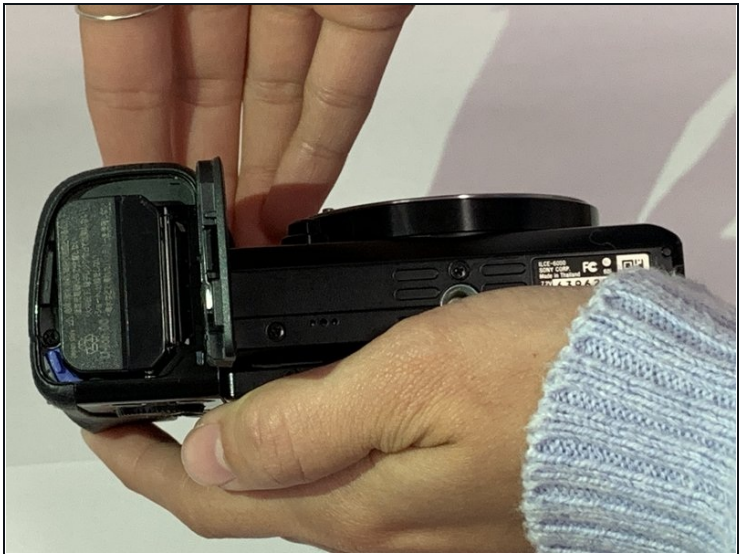


## Step 2



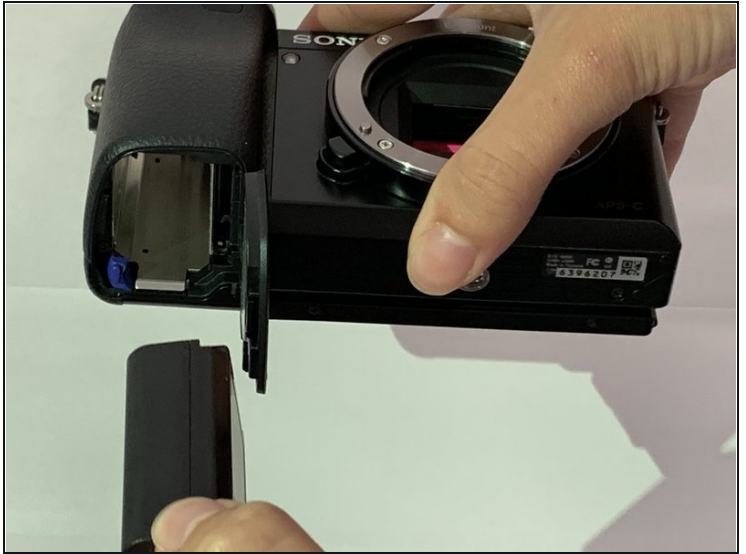
- Slide the notched locking bar on the battery compartment from LOCK to OPEN.

## Step 3



- Push the small blue bar horizontally off of the battery.

## Step 4



- Remove the battery.

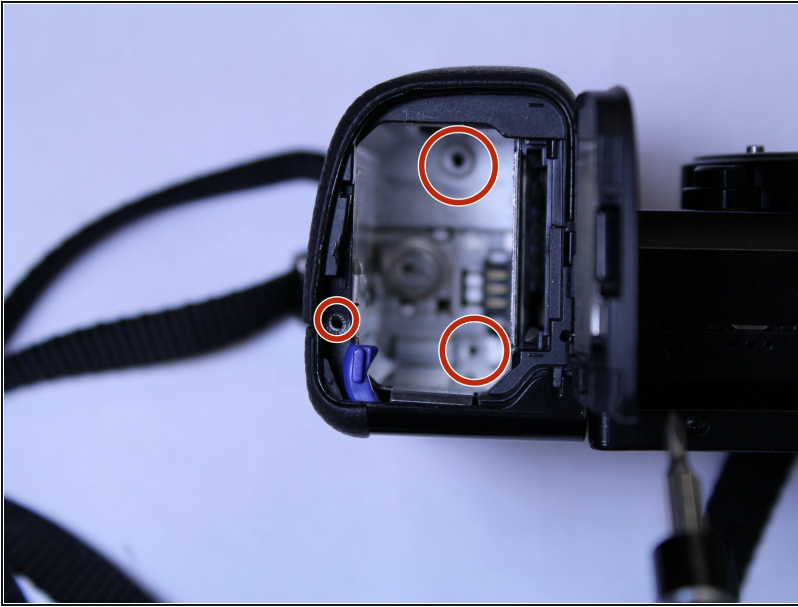
## Step 5 — Back Case



- Position the camera with the bottom facing upwards and the lens facing away from you.
- Slide the notched locking bar on the battery compartment from LOCK to OPEN.



## Step 6



- Once the battery is removed, use a Phillips #00 screwdriver to remove the three screws at the bottom of the battery compartment.

## Step 7



- Use the Phillips #00 screwdriver to remove the screws located next to the camera strap.

⚠ There may be screws on either side by the camera strap mounts. If removing the screw on the left side doesn't sufficiently loosen the case, be sure to check for a screw on the other side before resorting to excessive force.

## Step 8



- Position the camera with the battery housing facing upwards.
- Remove the two screws on the bottom of the camera using the Phillips #00 screwdriver.

## Step 9



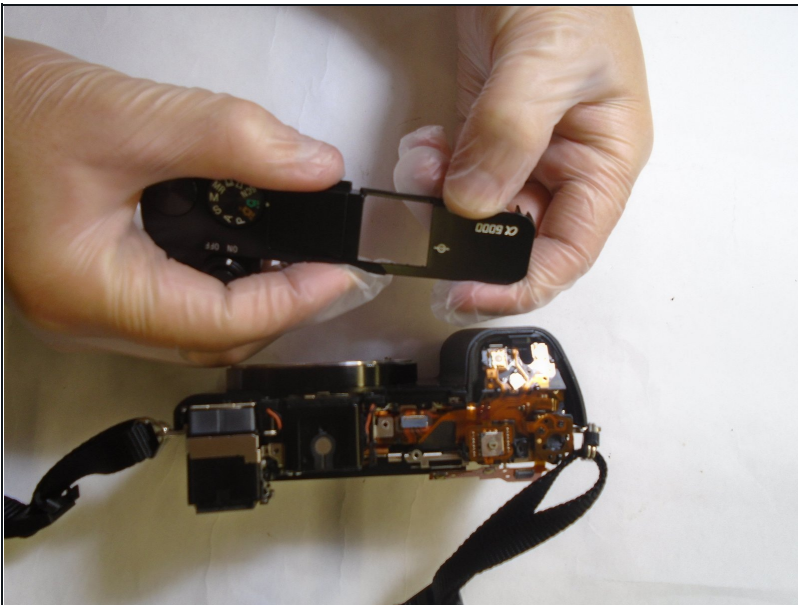
- Position the camera with the flash assembly facing upwards.
- Remove the screw located underneath with a Phillips #00 screwdriver.

## Step 10



- Pull back the LCD screen.
- Remove the three screws directly underneath using the Phillips #00 screwdriver.

## Step 11

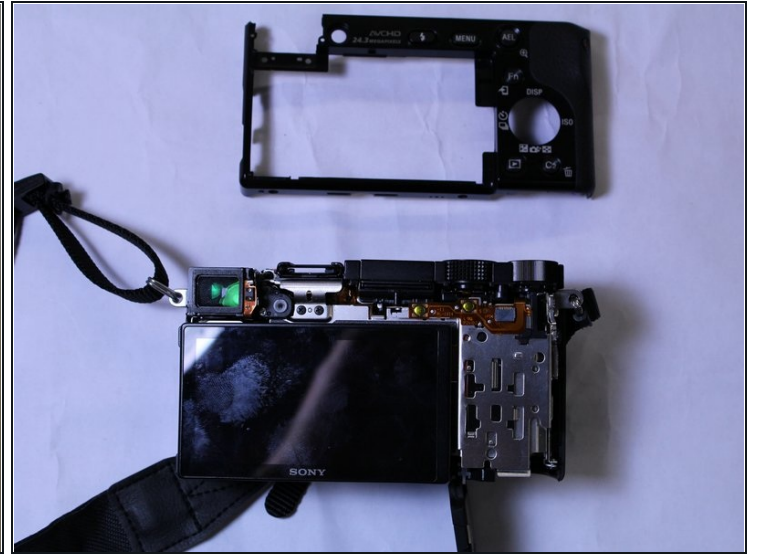
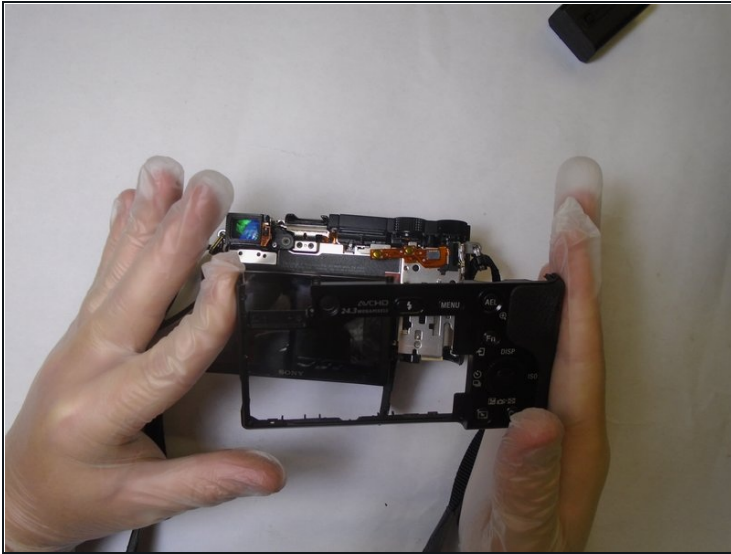


- Gently pop off the top case of the camera using your fingers or a plastic opening tool.

⚠ If using a plastic opening tool, ensure that the pressure is being applied to the plastic rather than the metal.



## Step 12



- Position the camera with the LCD screen facing upwards.
- Pull back the LCD screen.
- Gently remove the back case guiding it around the LCD screen.

---

To reassemble your device, follow these instructions in reverse order.