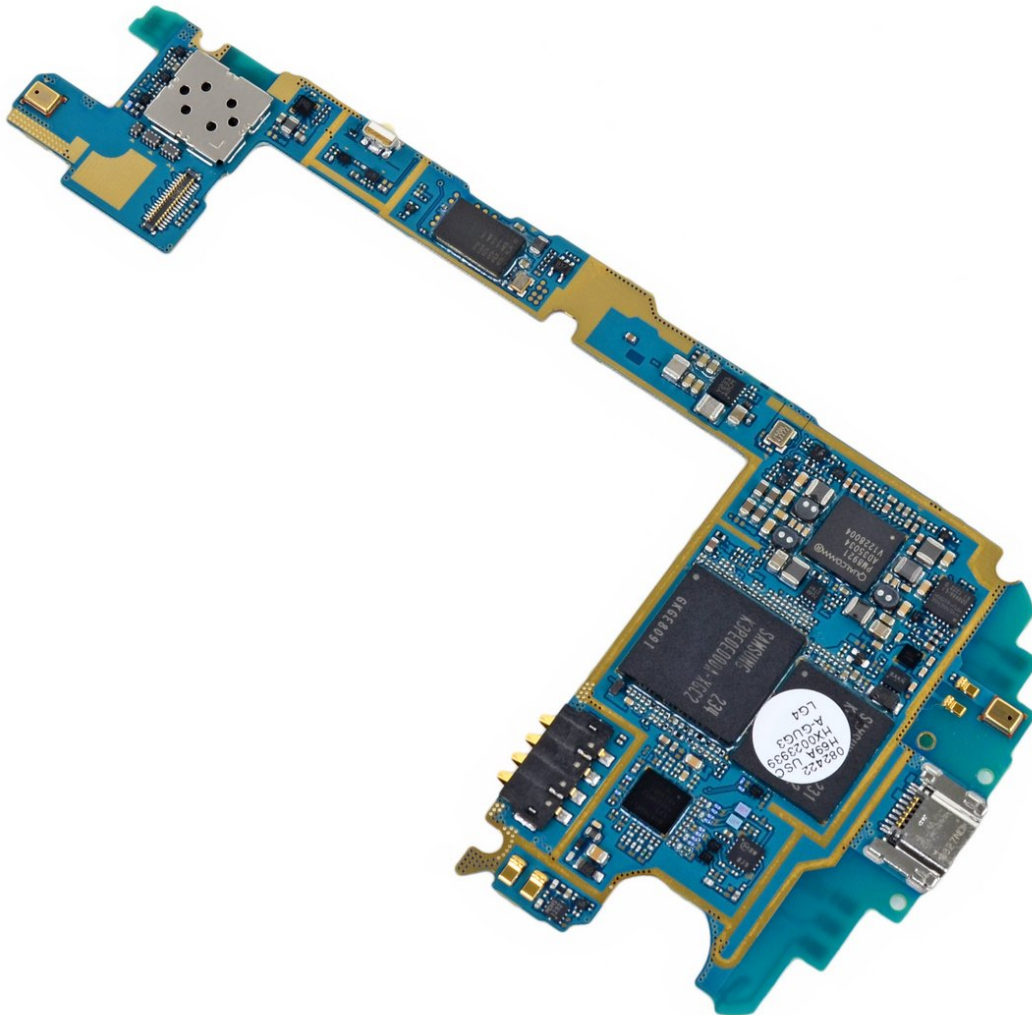




Samsung Galaxy S III Motherboard Replacement

Replace the Motherboard in your Samsung Galaxy S III.

Written By: Walter Galan



INTRODUCTION

Use this guide to replace the motherboard.



TOOLS:

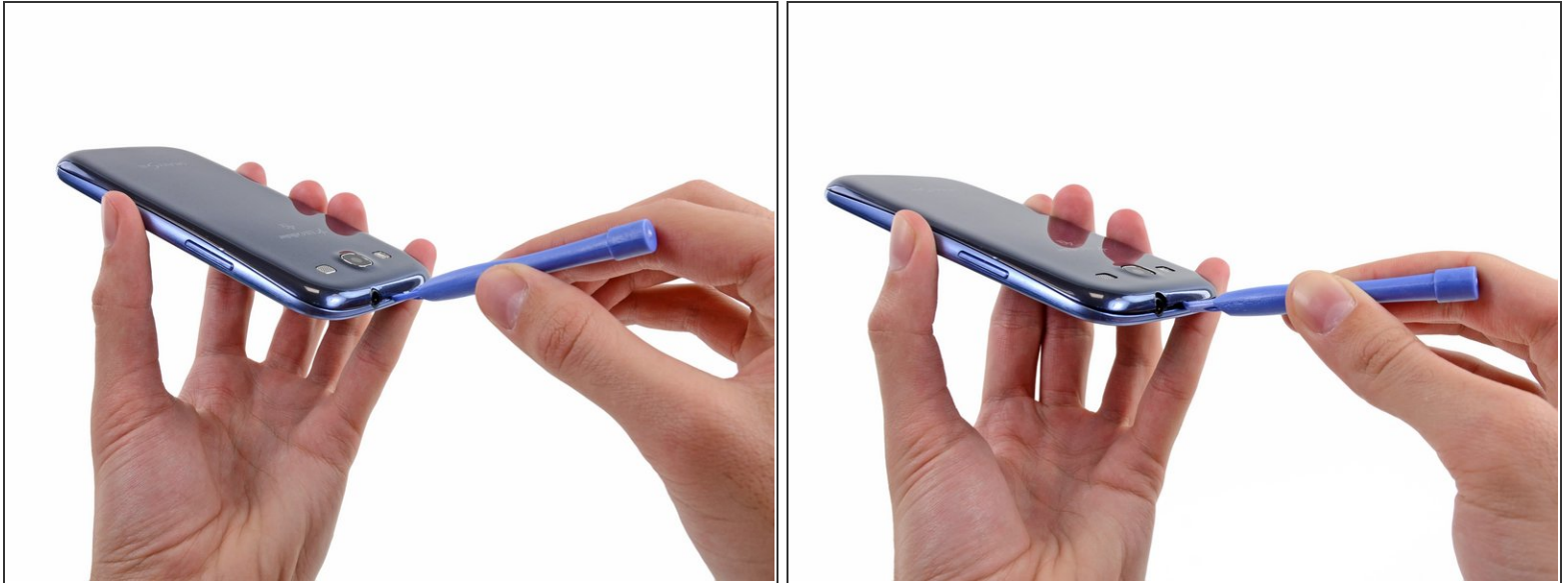
- [Phillips #00 Screwdriver](#) (1)
- [iFixit Opening Tool](#) (1)



PARTS:

- [Galaxy S III Motherboard \(Verizon\)](#) (1)
- [Galaxy S III Motherboard \(MetroPCS\)](#) (1)
- [Galaxy S III Motherboard \(ATT\)](#) (1)
- [Galaxy S III Motherboard \(US Cellular\)](#) (1)
- [Galaxy S III Motherboard \(T-Mobile\)](#) (1)
- [Galaxy S III Motherboard \(Sprint\)](#) (1)

Step 1 — Rear Case



- i** The following four steps can be accomplished without a plastic opening tool. However, it's recommended to use a tool to best avoid breaking any clips along the perimeter of the rear case.
- Insert a plastic opening tool or fingernail into the notch in the gap between the rear case and the rest of the phone, located at the top of the device.
 - Gently twist the opening tool to disconnect the clips securing the top of the rear case.

Step 2



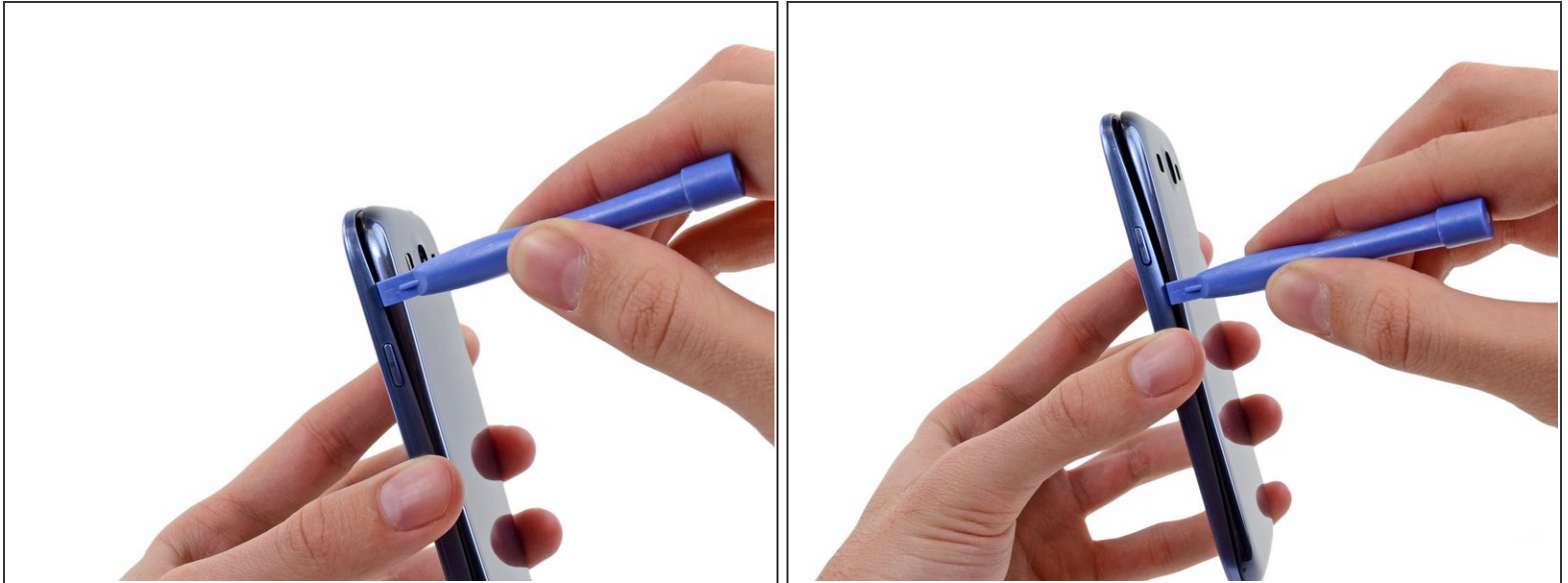
- Slide the plastic opening tool left along the top edge and repeat the twisting motion to widen the gap between the rear case and the phone.

Step 3



- Continue to move the plastic opening tool around the perimeter of the top left corner, gently prying up along the rear case.

Step 4



- Pry along the top right side, and continue prying down the right side of the rear case.

Step 5




- Lift up and remove the rear case from the phone.

i You may need to peel the case up to separate it from any clips still holding it to the bottom of the phone.

Step 6 — Battery



 This step can be accomplished without the need of a plastic opening tool. Just use your finger if you want to.

- Wedge a plastic opening tool into the small notch above the battery.
- Pry the battery up out of its recess.

Step 7



- Remove the battery.

Step 8 — SIM Card



- Using your fingernail, push the SIM card slightly deeper into its slot, until you hear a click.
- After the click, release the card and it will pop out of its slot.

☒ For reassembly, push the SIM card into the slot until it clicks in place.

Step 9



- Use your thumb to slide enough of the SIM card out of its slot to grab ahold of it.
- Grasp and remove the SIM card away from the phone.

Step 10 — microSD Card



- Using your fingernail, push the microSD card slightly deeper into its slot, until you hear a click.
 - After the click, release the card and it will pop out of its slot.
- ✦ For reassembly, push the microSD card into the slot until it clicks in place.

Step 11



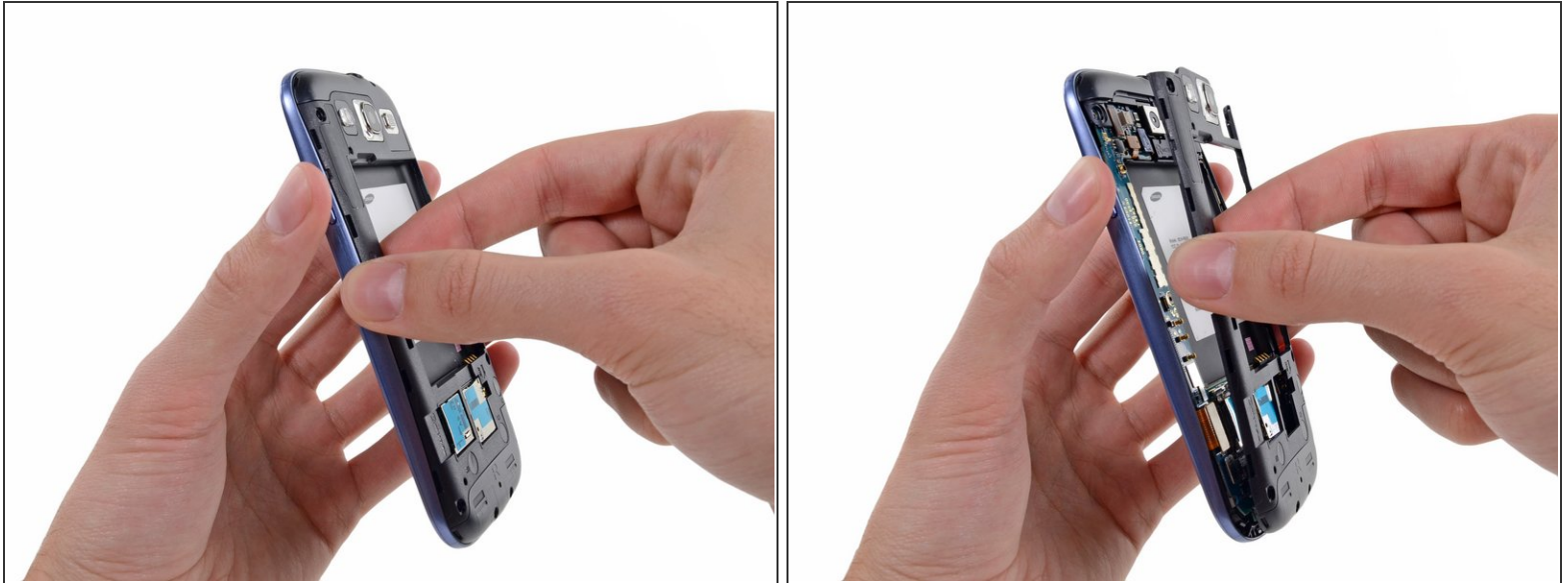
- Use your thumb to slide the microSD card out of the slot.
- Remove the microSD card from the phone.

Step 12 — Plastic Midframe



- Remove the ten 4.0 mm Phillips screws securing the midframe to the front panel assembly.

Step 13



- Grasp the left side of the plastic midframe with your thumb and forefinger and lift it away from the phone.
- ⓘ The midframe lightly snaps in place, and can be removed with very little force.

Step 14 — Headphone Jack/Speaker Assembly



- Use a plastic opening tool to pry the rear-facing camera connector up from its socket on the motherboard.

⚠ Make sure you are prying on the connector and not the socket, or you may damage the motherboard.

Step 15



- Insert a plastic opening tool outboard of the speaker portion of the headphone jack/speaker assembly.
- Gently pry the headphone jack/speaker assembly up from the front assembly.

Step 16



- Lift the headphone jack/speaker assembly out of the Galaxy S III.

Step 17 — Motherboard Assembly



- Use a plastic opening tool to pry the front-facing camera connector from its socket on the motherboard.

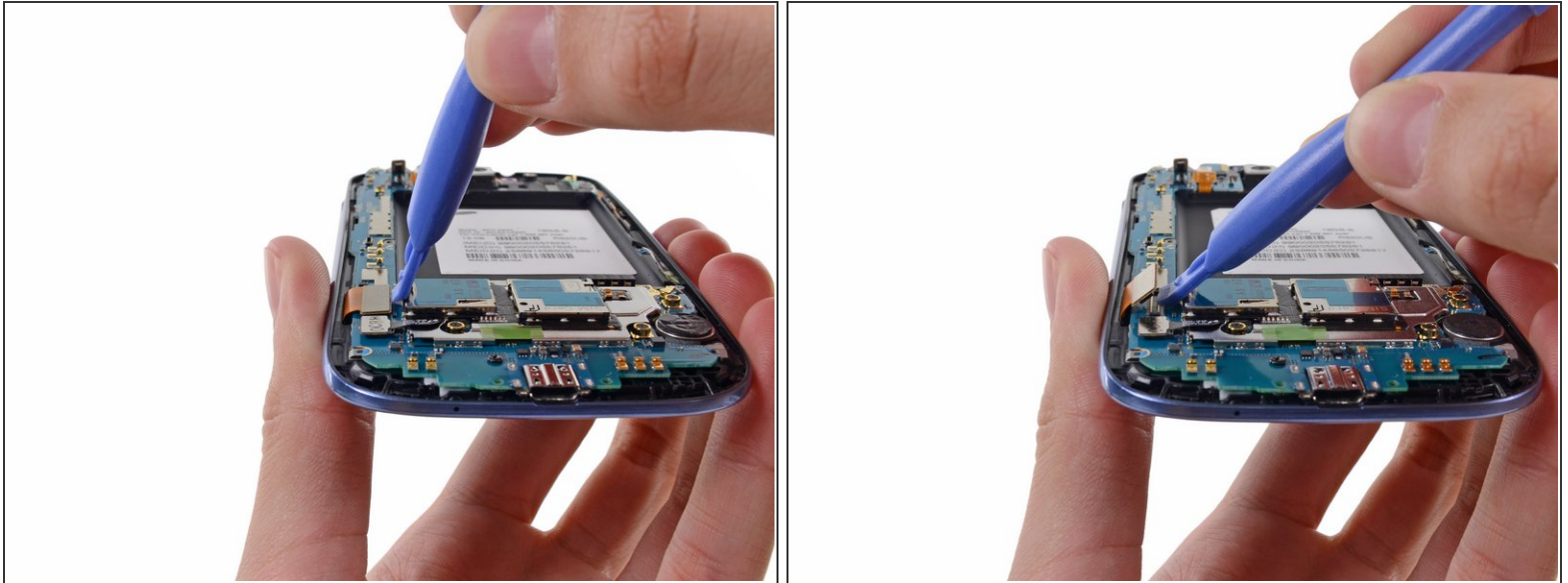
⚠ Do not try to remove the front-facing camera just yet. Its cable is still routed beneath the motherboard assembly to the ambient light sensor.

Step 18



- Disconnect the digitizer cable by gently prying its connector up from its socket on the motherboard.

Step 19



- Disconnect the display data cable from the motherboard.

Step 20



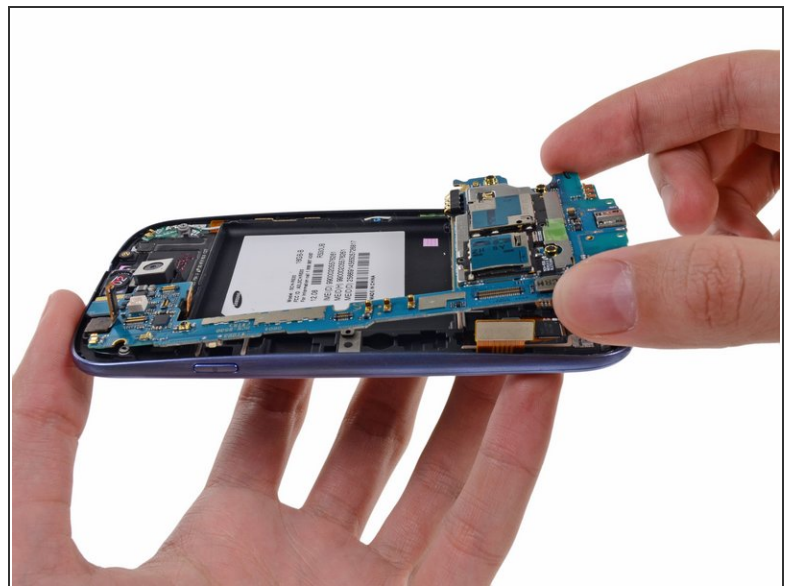
- Pry the Wi-Fi antenna cable connector up from its socket on the motherboard.
- Gently move the cable out of the way of the motherboard.

Step 21



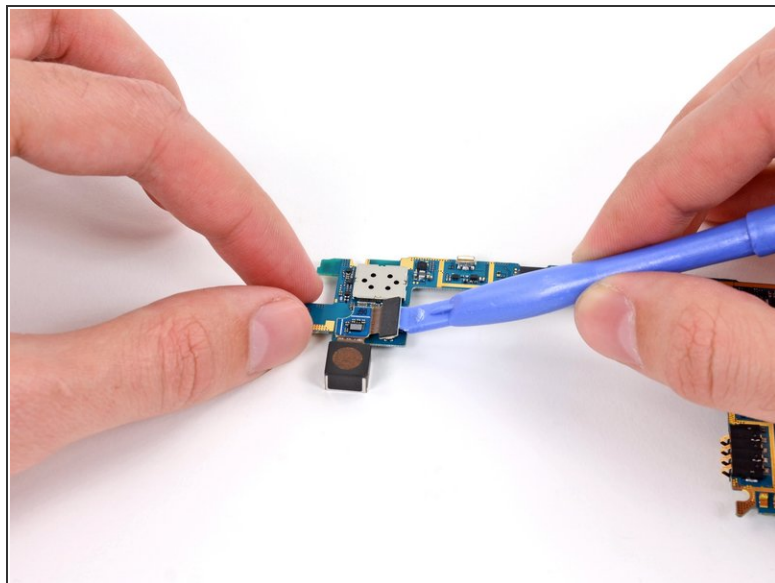
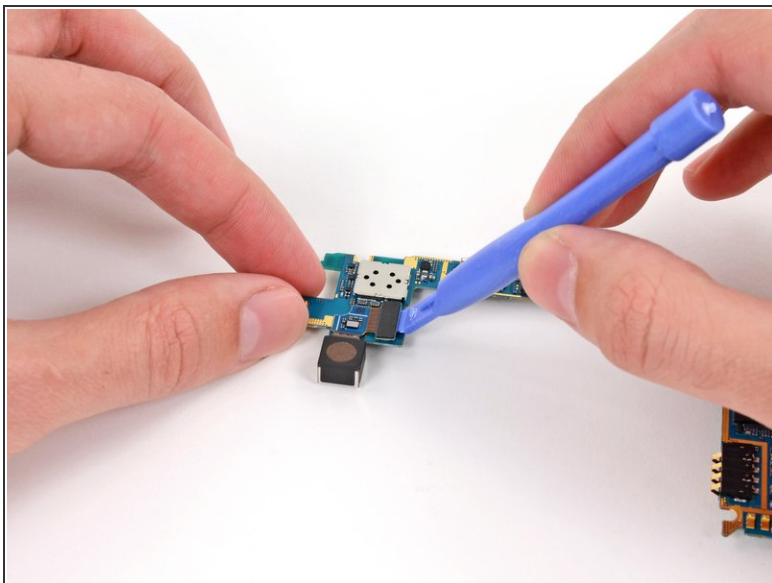
- Remove the single 3.0 mm Phillips screw securing the motherboard to the front panel assembly.

Step 22



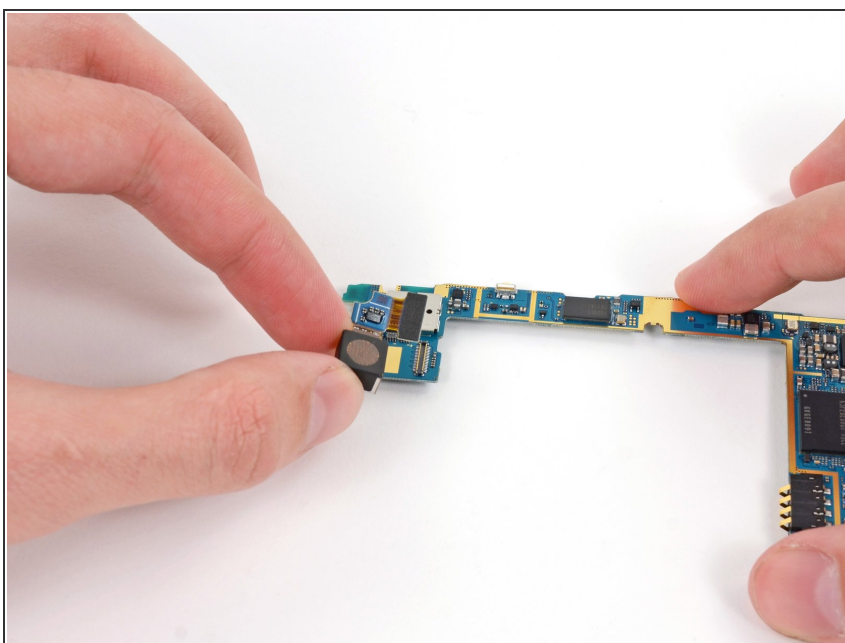
- Carefully lift the bottom of the motherboard assembly away from the front panel assembly.
- Remove the motherboard assembly from the front panel assembly, minding any cables that may snag on it.

Step 23 — Rear-Facing Camera



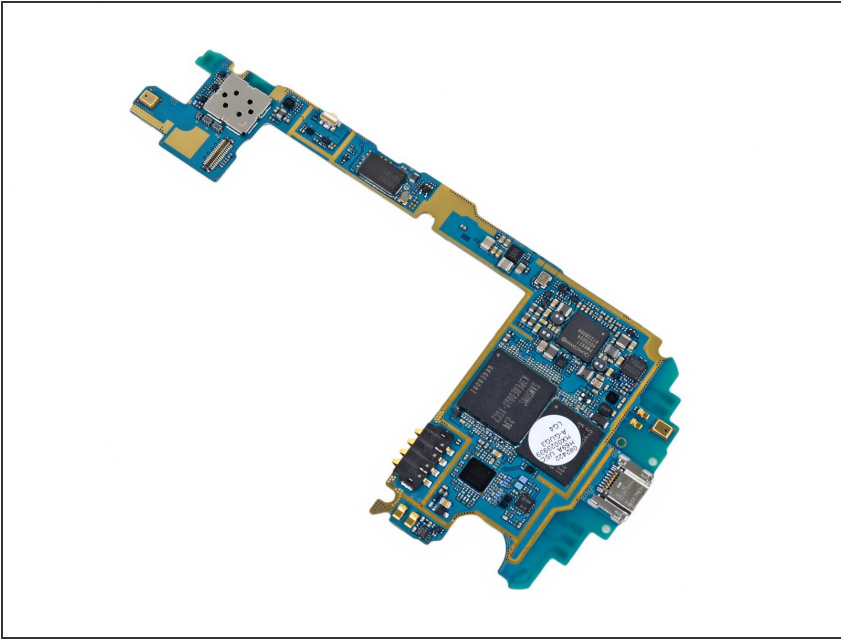
- ❗ Flip the motherboard over. We recommend setting it on a grounded work surface.
- Use a plastic opening tool to pry the rear-facing camera connector from its socket.

Step 24



- Remove the rear-facing camera off the motherboard.

Step 25 — Motherboard



- The motherboard remains.

To reassemble your device, follow these instructions in reverse order.