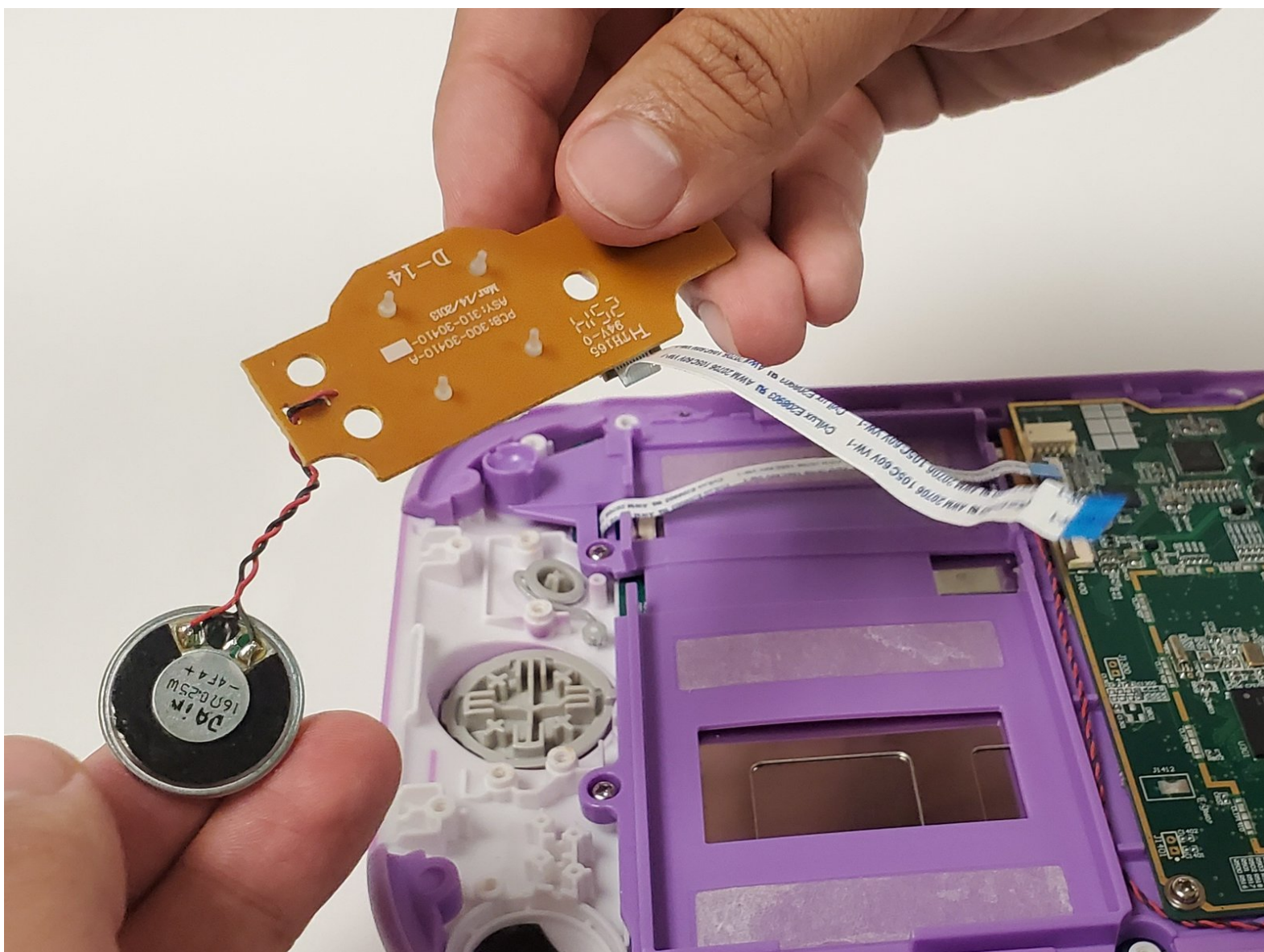




LeapFrog LeapPad Ultra XDi Home Button Replacement

Replacing the home button in the LeapFrog LeapPad Ultra XDi

Written By: Mario Rivera



INTRODUCTION

This guide provides steps for replacing the home button in the LeapFrog LeapPad Ultra XDi (model number 33300).

The home button allows you to return to the home screen from apps and other pages on the device. When this part is not working properly you will not be able to return to the home screen using this button or may experience delays. You should first try the home button [troubleshooting guide](#) before replacing the entire home button. A new home button is also required for this guide.

Before beginning, make sure to power down the device completely and disconnect it from any power source.



TOOLS:

- [Phillips #0 Screwdriver](#) (1)
 - [Phillips #1 Screwdriver](#) (1)
 - [Spudger](#) (1)
 - [iFixit Opening Tools](#) (1)
-

Step 1 — Battery



- Orient the tablet so it's laying screen down and the barcode sticker is facing up.
- Remove the barcode sticker to expose the two screws.

Step 2



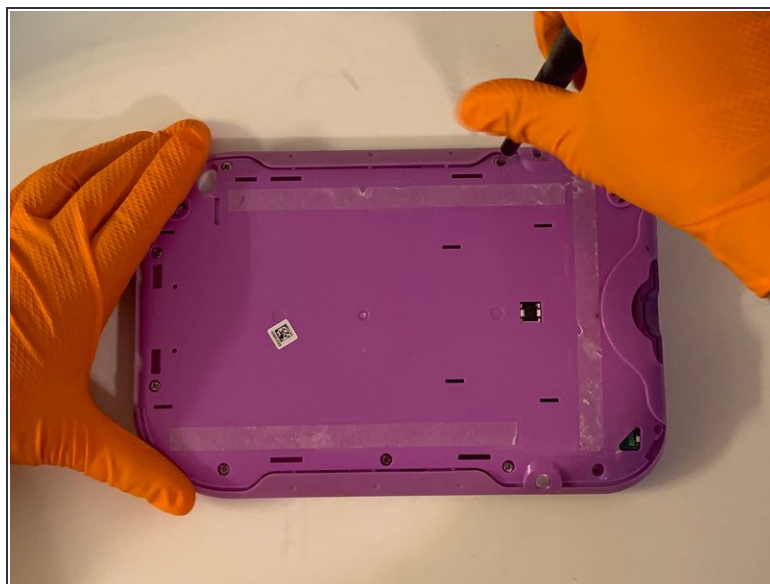
- Remove the two 5.0mm Phillips #0 screws.

Step 3



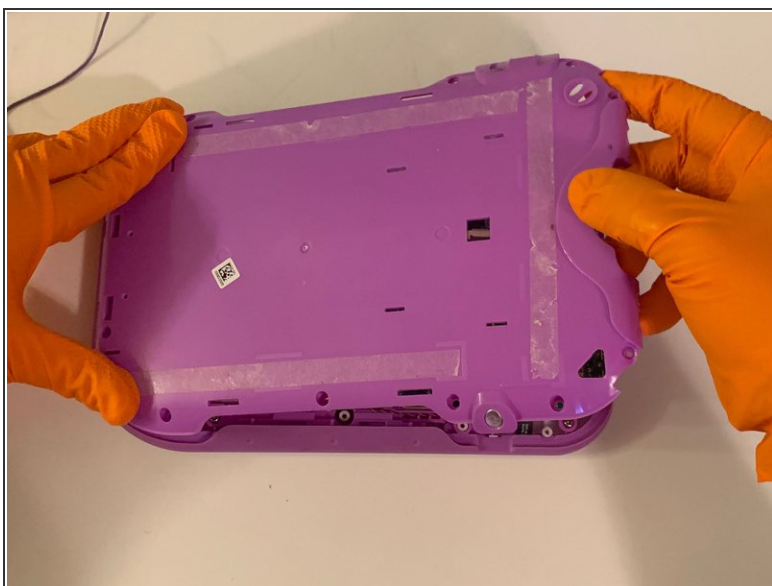
- Using the iFixit opening tool, pry off the purple and white child-proof casing to expose the twelve screws.

Step 4



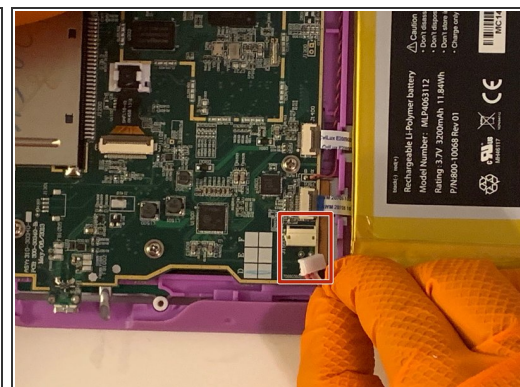
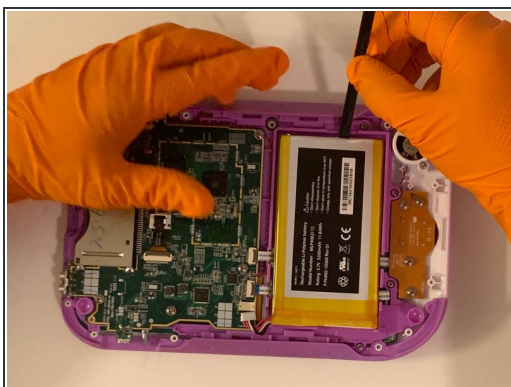
- Remove all twelve 7mm Phillips #1 screws located along the edges of the device.

Step 5



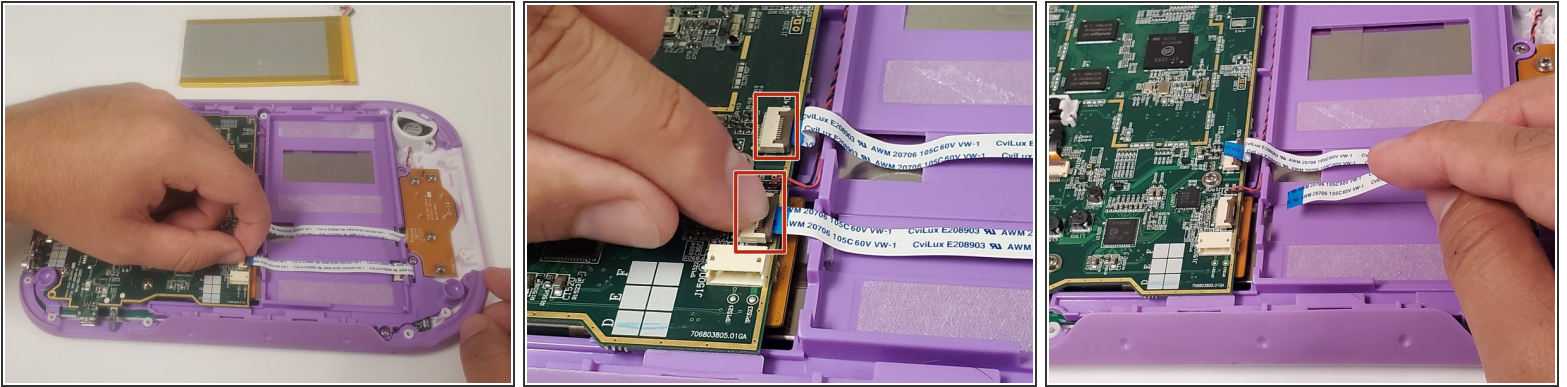
- Remove the purple case, exposing the motherboard and battery.

Step 6



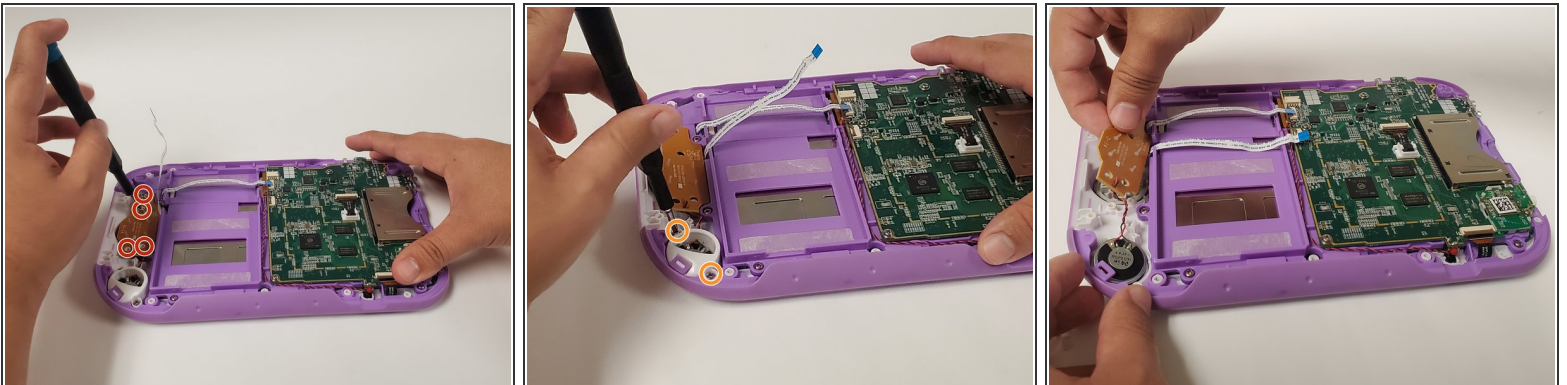
- Use the Spudger to remove the glued down battery.
- Using your fingers, grab the battery wires and carefully unplug them from the motherboard.
- Replace the battery with a new one.



Step 7 — Home Button



- Locate the three ribbon cables on top of the motherboard.
- Flip up the locking clip on the ribbon cable connector to release the cable.
- Disconnect the cables from their connectors.

Step 8



- Unscrew the four 5mm Phillips #1 screws.
 - Unscrew the two 5mm Phillips #1 screws.
 - Lift the home button circuit board up. Replace the home button circuit board.
-  The entire home button circuit board must be replaced.
-  Do not dispose of rubber padding on home button circuit board.

To reassemble your device, follow these instructions in reverse order.