



Apple Cinema HD Display 30" Teardown

Teardown of the Apple Cinema HD Display 30".

Written By: tr121



INTRODUCTION

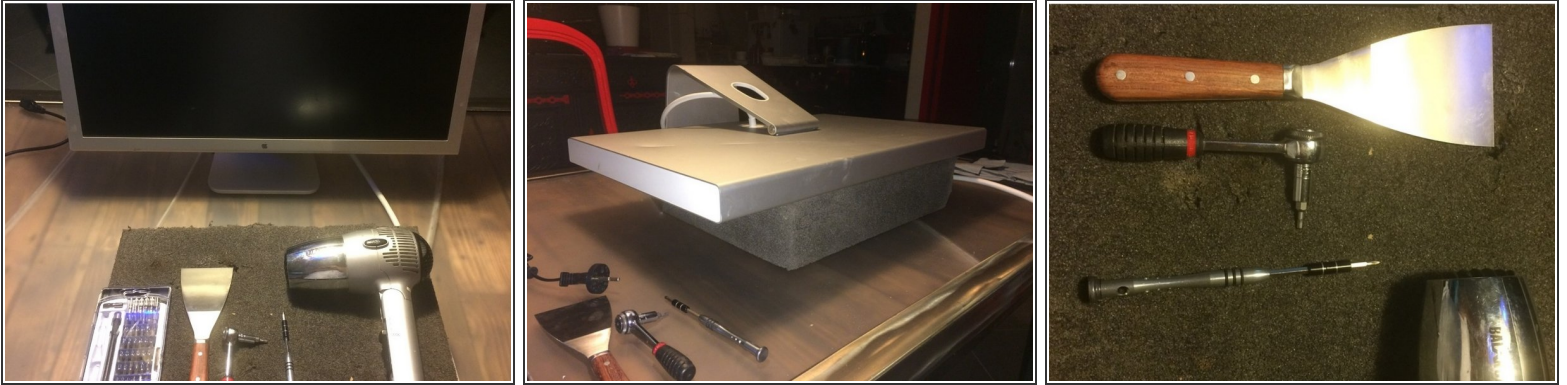
Translated and re-uploaded this guide to the current iFixit repair guide catalog. Old untranslated guide can be found [here](#).



TOOLS:

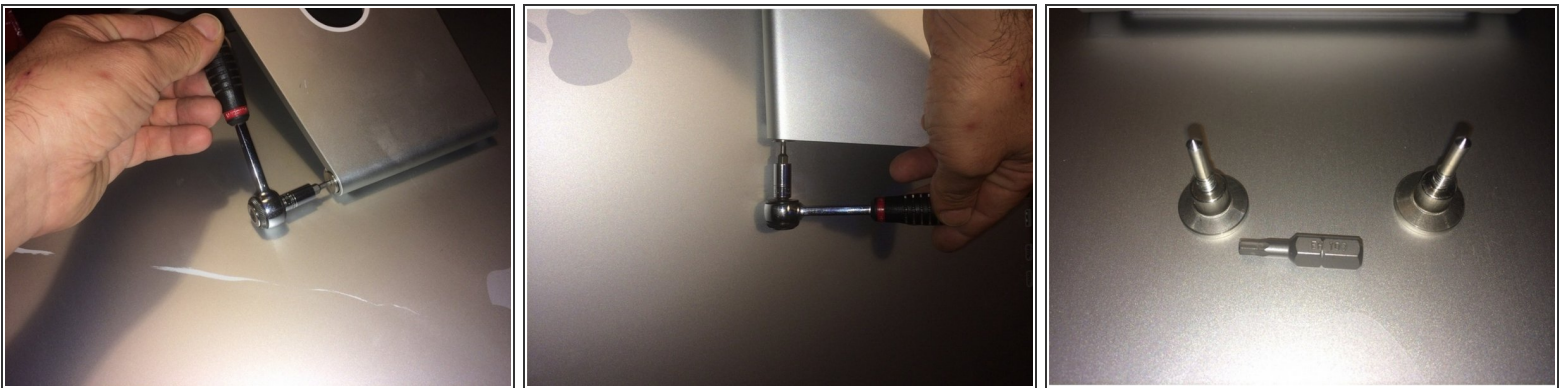
- [Putty knife](#) (1)
 - [Heat Gun](#) (1)
 - [64 Bit Driver Kit](#) (1)
-

Step 1 — Intro



- Gather your tools (look in the teardown description).
 - ❗ You do not specifically need the "64 Bit Driver Kit" I linked, you just need a general screwdriver kit with Torx screwdrivers/bits specifically.
 - ❗ The ratchet in the pictures included is not necessary.
- Lay the cinema display face down on a soft surface in order to not scratch or harm the LCD panel.

Step 2 — Stand removal pt. 1



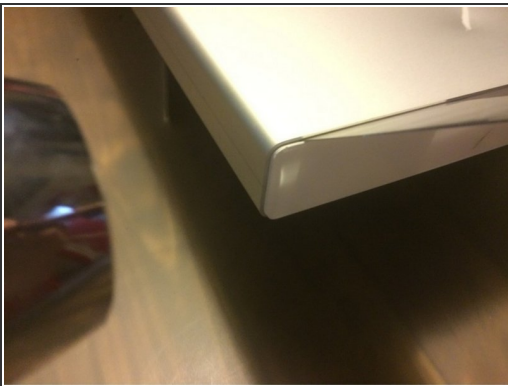
- Unscrew the two screws on the sides of the stand where the stand connects to the display.
 - ❗ A ratchet may be useful here but isn't necessary.
- Image 3: Screws remain.

Step 3 — Stand removal pt. 2



- Remove the four Torx screws where the stand attaches to the cinema display.
- Remove the stand.

Step 4 — Left side panel



- Wedge a putty knife into the plastic side piece, without trying to pry the plastic off yet!
- Either use the heat gun to heat the plastic piece for about 30 seconds, or use the hair dryer for up to a minute.
- Carefully use the putty knife to work the plastic side piece off the cinema display. Re-heat the plastic piece again if it doesn't come off with ease.

Step 5 — Right side panel



- Repeat the steps in Step 4.

⚠ Work carefully when prying this specific side panel off. Be sure to NOT insert the putty knife near the buttons when removing the side panel with buttons (you risk severing the button board cable underneath the plastic piece).

Step 6 — Panel under right side panel



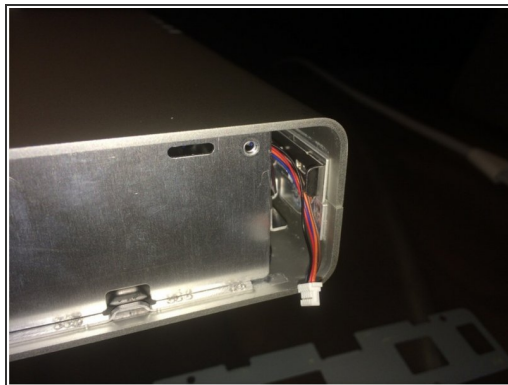
- Remove the four Torx screws.
- Use a pry tool to remove the secondary side panel.

Step 7 — Left secondary side panel



- Repeat Step 6 for the left secondary side panel.
- ⓘ The screws should be the same length and in the same place as the right side panel.

Step 8 — Undo latches



- Wedge the putty knife in between the metal pieces (arrow in image).
- Move the metal piece circled green towards the display panel to disengage the clip.
- Repeat for the identical clip on the opposite side of the display.

Step 9 — Enclosure removal pt. 1



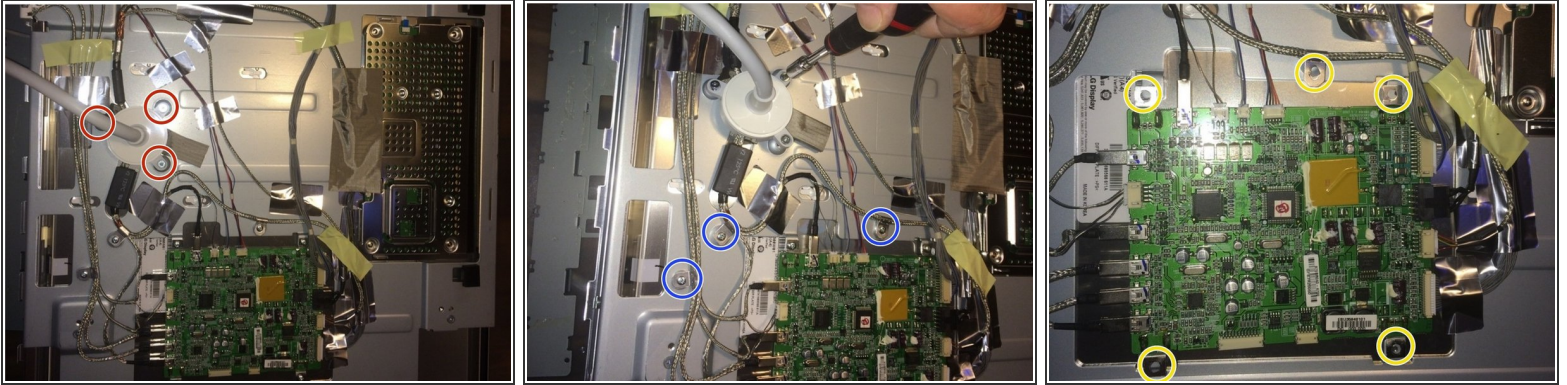
- First image: Separate the metal enclosure at the bottom. Use prying tools to undo the retaining clips if needed.
- Second image: Thread the all-in-one cable out of the hole in the metal enclosure.

Step 10 — Enclosure removal pt.2



- Peel up the tape (shown in the red circle). Then peel up the remaining component off the enclosure.
- Not shown: Bend the enclosure apart just enough to slip the display panel assembly out of the enclosure.
- ⓘ Tip: Use a friend and have them hold the two parts of the enclosure apart while you lift the display panel assembly out of the enclosure.

Step 11 — All-in-one cable & logic board removal



- Remove 3 screws holding the all-in-one cable in place (shown in red circles).
- Remove three more screws (shown in blue circles).
- Remove 5 more screws holding the logic board intact (shown in yellow circles).