



Huawei Mate 10 Battery Disconnect

Prerequisite guide only! Removes the heat dissipation layer, disconnects the battery, and disconnects the interconnect cables for the Huawei Mate 10.

Written By: Arthur Shi



INTRODUCTION

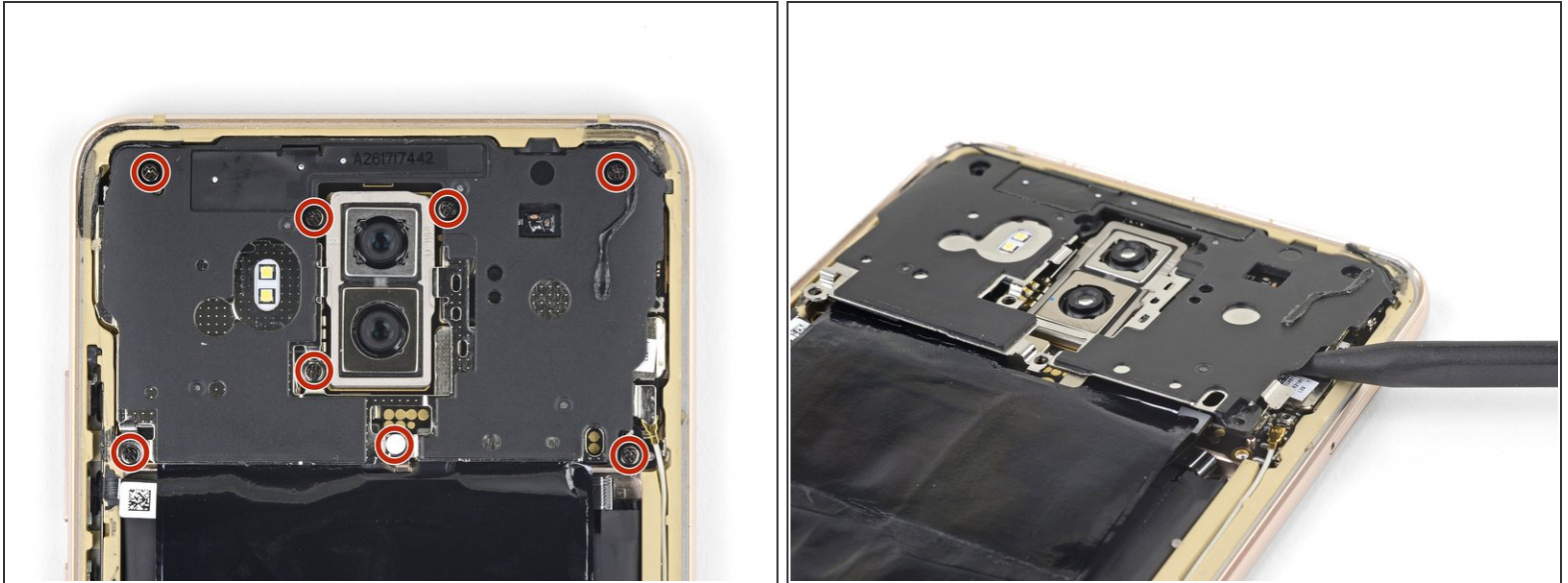
Prerequisite guide only! This guide is part of an another procedure and is not meant to be used alone.

Removes the heat dissipation layer, disconnects the battery, and disconnects the interconnect cables for the Huawei Mate 10.

TOOLS:

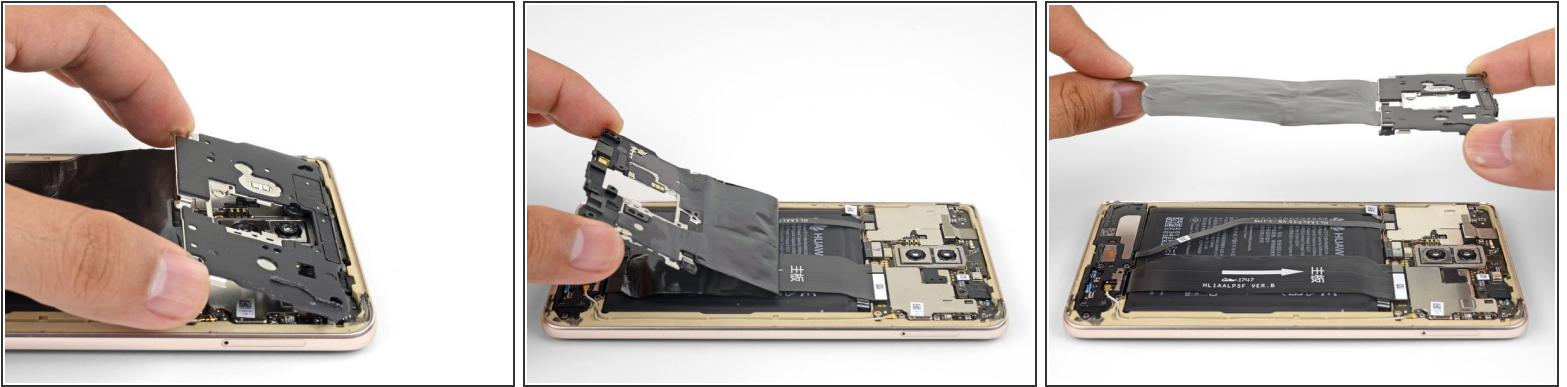
- [Phillips #00 Screwdriver](#) (1)
 - [Spudger](#) (1)
-

Step 1 — Remove the plastic bracket



- i** The next two steps show how to remove the heat dissipation layer, along with its plastic bracket.
- Remove the eight 3.4 mm long Phillips screws securing the plastic bracket.
 - i** One screw lies beneath a white sticker. Remove the sticker.
 - Insert the point of a spudger underneath the right edge of the plastic bracket and pry up slightly to loosen the shield.

Step 2



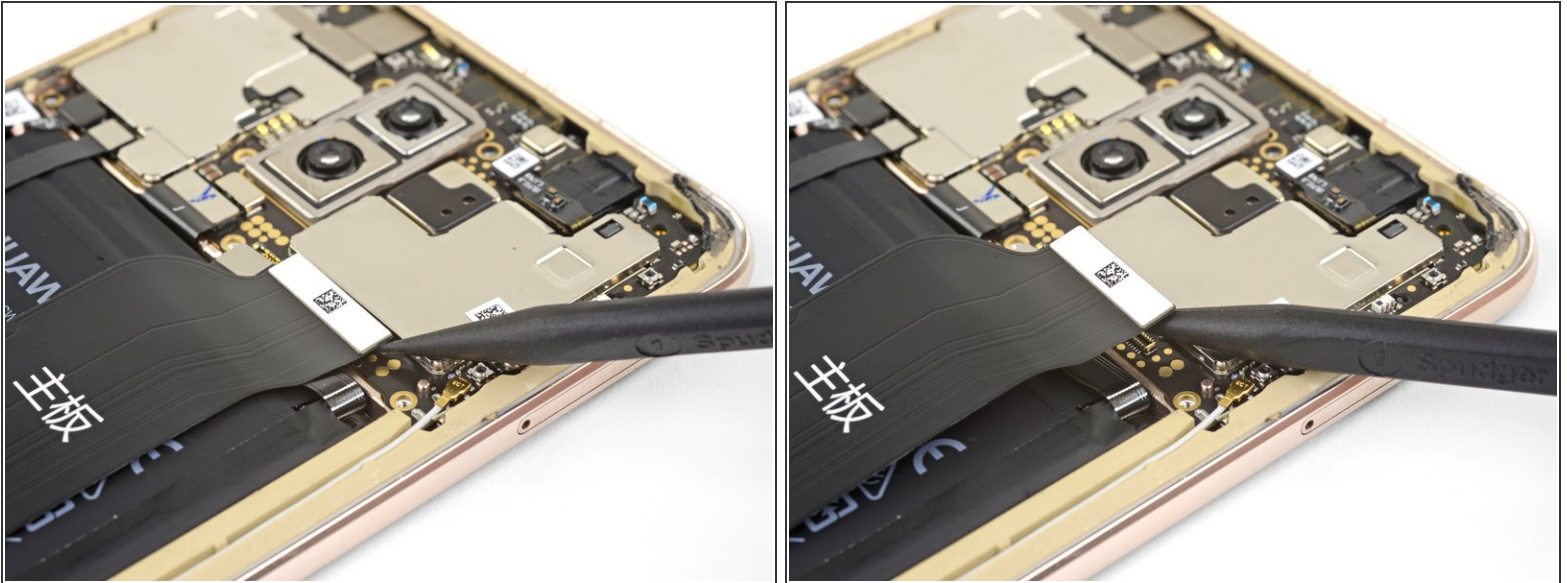
- Grasp the the lower edge of the plastic bracket with your fingers and lift the edge up slightly.
- Pull the plastic bracket away from the top edge of the phone.
- Slowly peel the black heat dissipation layer away from the phone. It is held in place with small patches of adhesive.
- Remove the plastic bracket along with the heat dissipation layer.

Step 3 — Disconnect the battery



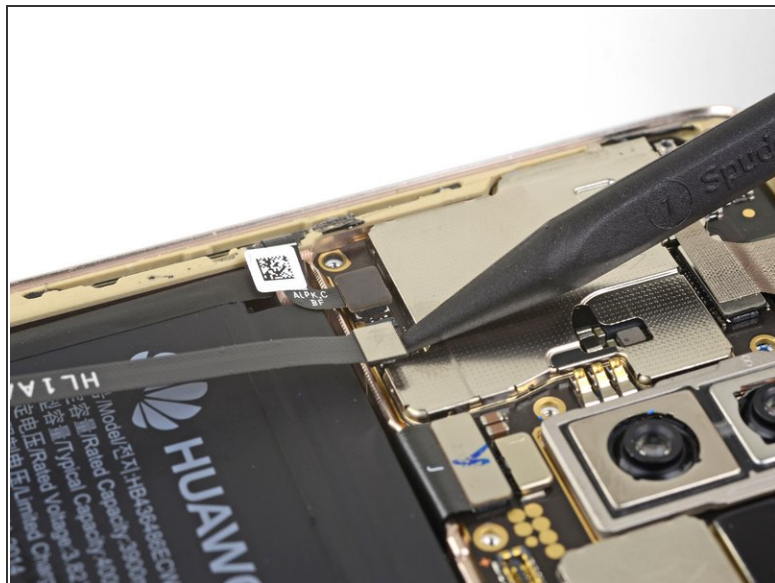
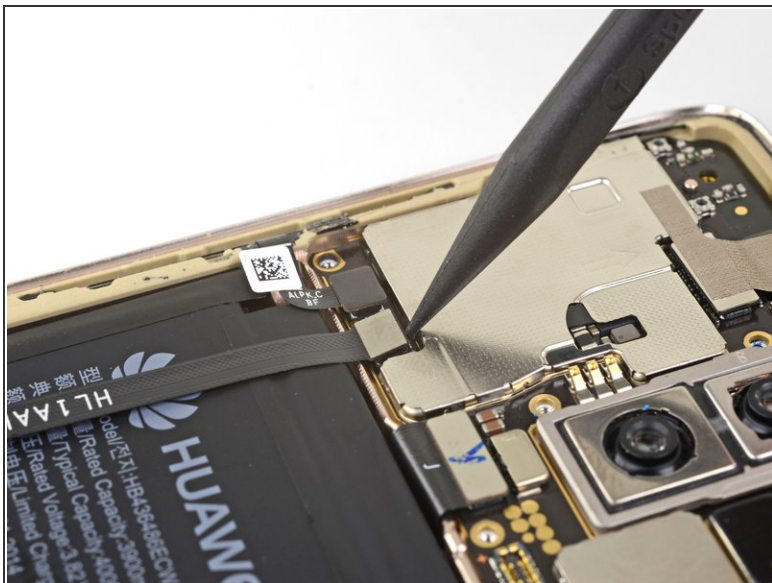
- Use the point of a spudger to pry up and disconnect the battery connector from its motherboard socket.
- ⓘ When you disconnect connectors like these, be careful not to dislodge the small surface-mounted components surrounding the socket.

Step 4 — Disconnect the interconnect cable



- Use the point of a spudger to pry up and disconnect the wide interconnect flex cable from its motherboard socket.
- ⓘ To re-attach [press connectors](#) like this one, carefully align and press down on one side until it clicks into place, then repeat on the other side. Do not press down on the middle. If the connector is misaligned, the pins can bend, causing permanent damage.

Step 5



- Use the point of a spudger to pry up and disconnect the fingerprint extension cable from its motherboard socket.

To reassemble your device, follow these instructions in reverse order.