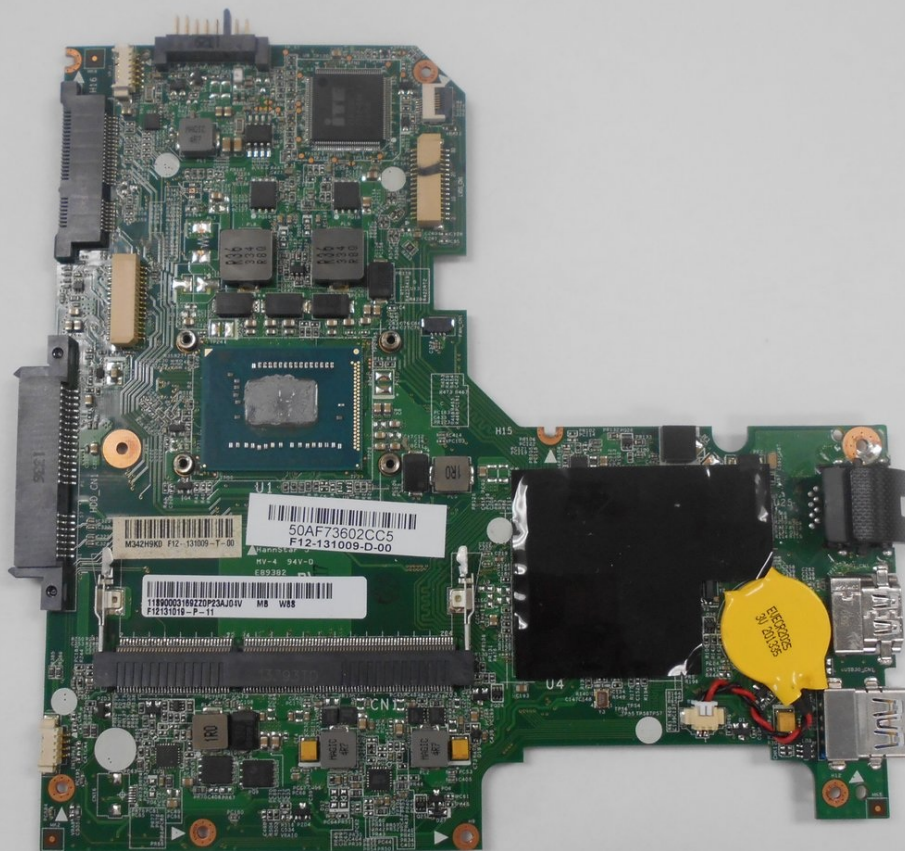




# Lenovo IdeaPad S210 Touch Motherboard Replacement

If you are experiencing longer than average...

Written By: Zack Colman



# INTRODUCTION

If you are experiencing longer than average start-up times or unexpected display issues such as freezing, it may be time to replace your motherboard.

Use this guide to learn how to safely remove the motherboard of a Lenovo IdeaPad S210 Touch. Knowing how to remove the motherboard is also necessary should you need to access some of the other internal hardware like the storage drive and fans.

Before using this guide, make sure that your computer is completely powered off and that all cables are unplugged. Be careful when using a screwdriver near the motherboard, as any contact could result in damage. If you need to set the motherboard down, remember to use a padded surface to protect sensitive components.

---

## TOOLS:

[iFixit Opening Tool](#) (1)

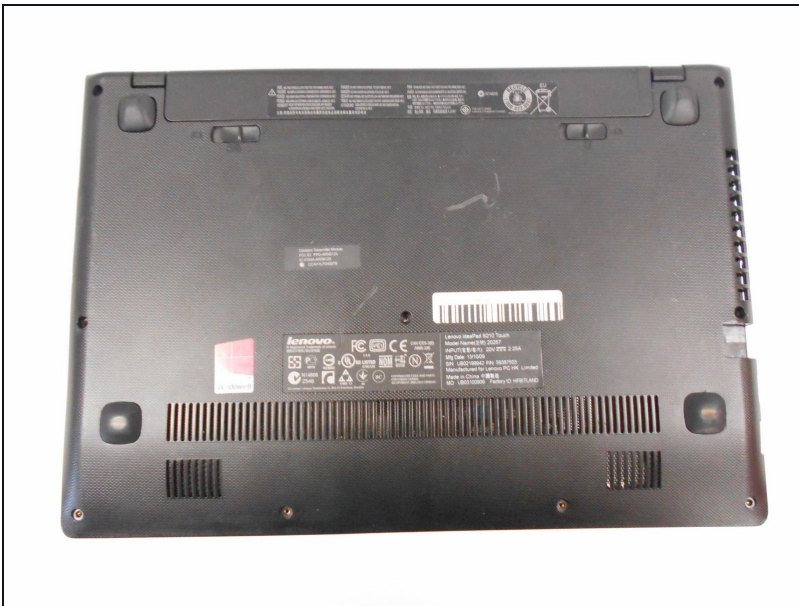
[Phillips #0 Screwdriver](#) (1)


[Phillips #00 Screwdriver](#) (1)

[Spudger](#) (1)

---

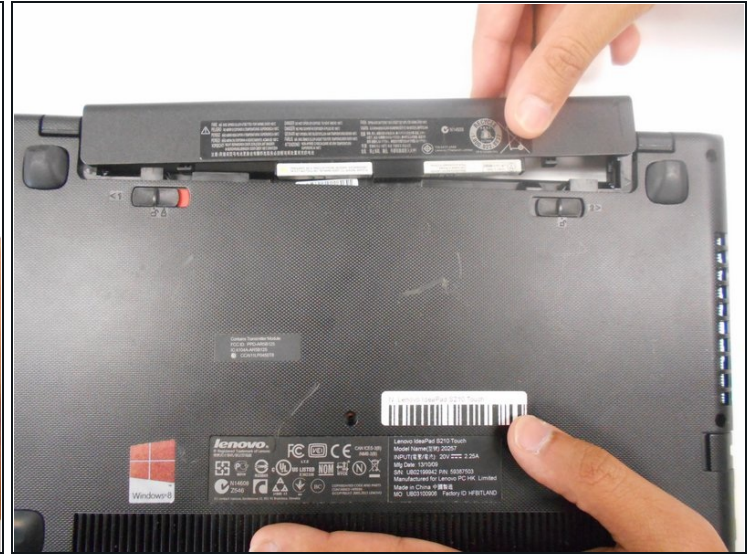
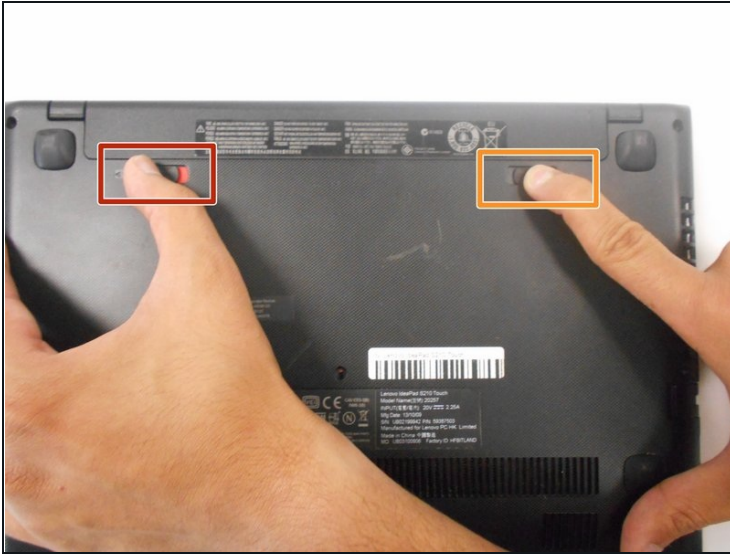
## Step 1 — Battery



 **Ensure your device is unplugged and shut down.**

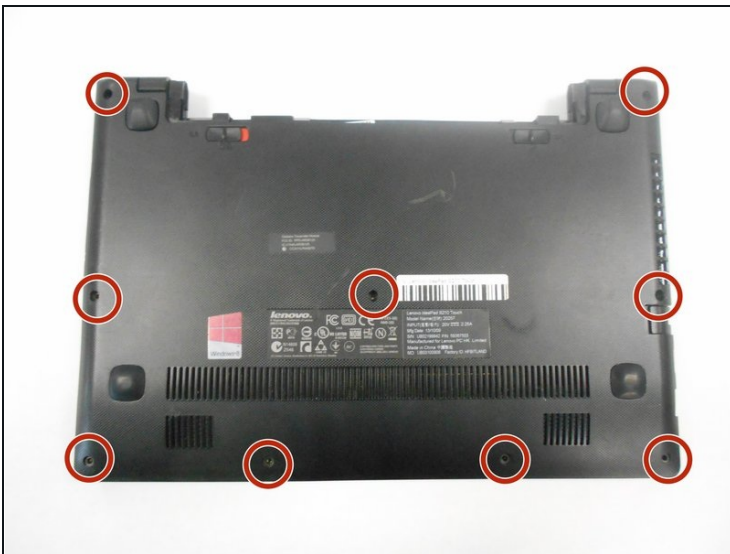
- Place the laptop down with the cooling vents facing upwards.

## Step 2



- Use your finger to slide the latch towards the unlocked position (away from the other latch). If done correctly you will see red.
- Slide the second latch to the unlocked position while gently pulling the battery away from the laptop.

## Step 3 — Back Panel



- Using the #0 Phillips screwdriver, remove the nine 4mm screws on the back panel.



## Step 4



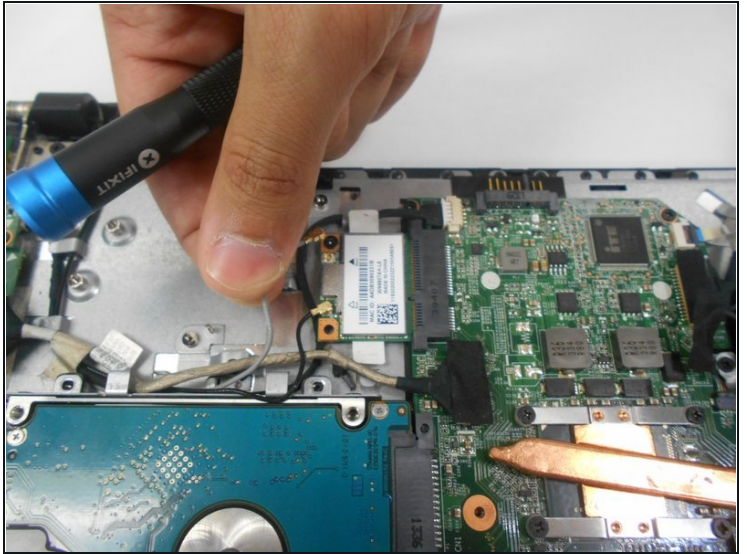
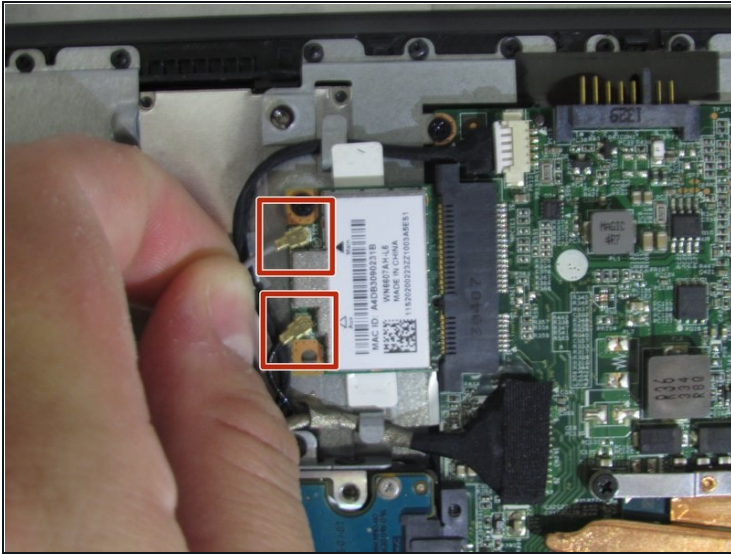
- Gently pull the two rubber feet closest to battery away from the device. Using a #0 Phillips screwdriver, remove the 5mm screw under each rubber foot.

## Step 5



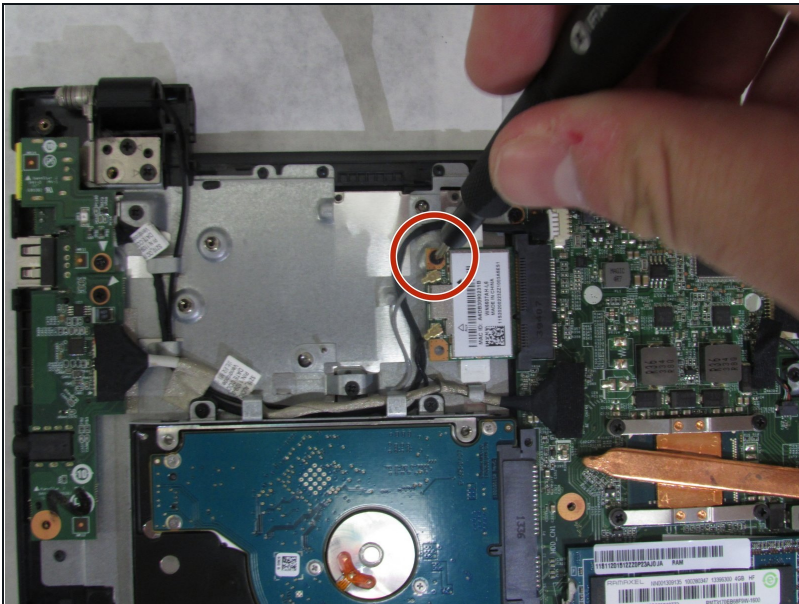
- Slowly begin working your plastic opening tool along the panel to undo the latches around the laptop.

## Step 6 — Wi-Fi Network Card



- Remove both antenna wires by pulling upwards gently.

## Step 7



- Using the #00 Phillips screwdriver, remove one 3mm screw from the network card.

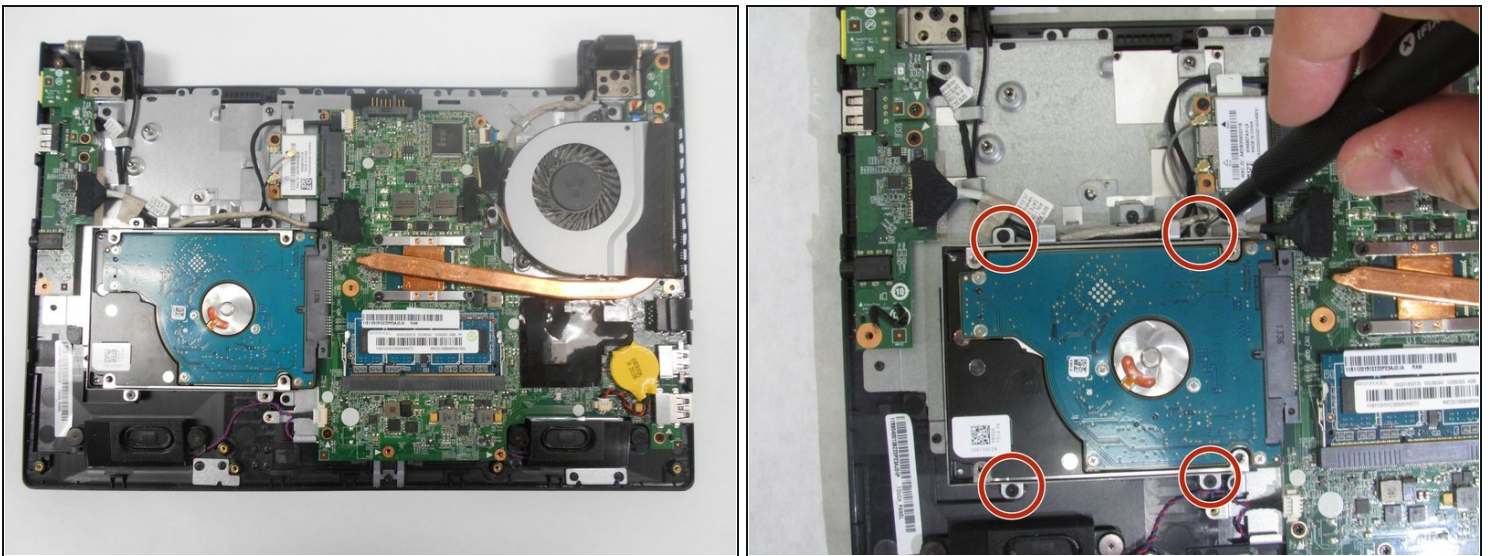


## Step 8



- Slide Wi-Fi network card away from motherboard and remove gently.

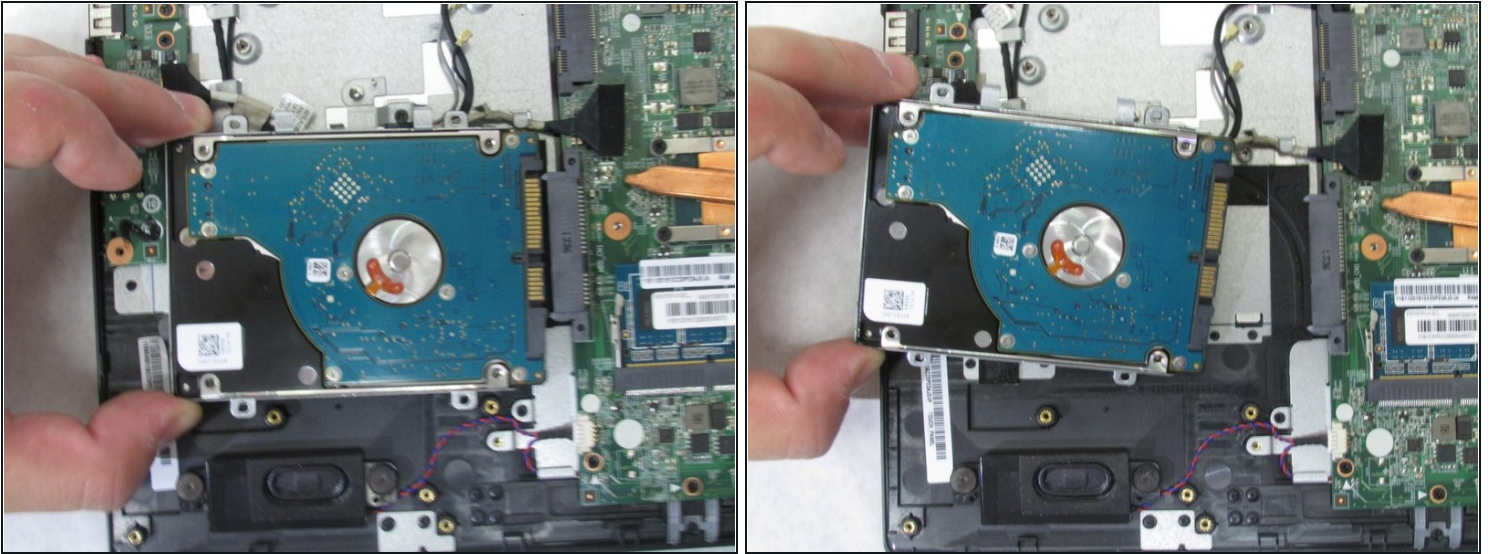
## Step 9 — Hard Drive



- Using a #0 Phillips screwdriver, remove the four 4mm screws that secure the hard drive bracket to the motherboard.



## Step 10



- Slide your hard drive away from your motherboard until fully removed.
- ⚠ Be careful not to snag any wires routed along the battery side of the hard drive.

## Step 11



- ① This step is only necessary if you are swapping your old hard drive for a new one.
- Using a Phillips #0 screwdriver, remove four 2.5mm screws, two per side, to release the hard drive from its mounting bracket. These screws are directly next to each mounting screw you removed previously.
- ☑ Install the mounting brackets onto the new hard drive during reassembly.

## Step 12 — Cooling Fan



- ⓘ Many of the wire connections to the motherboard are secured by tape for vibration protection. Your device may or may not have this tape.
- If any tape is present, remove all tape from the area within the red area.

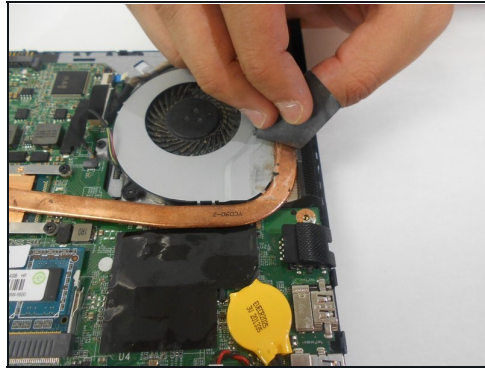
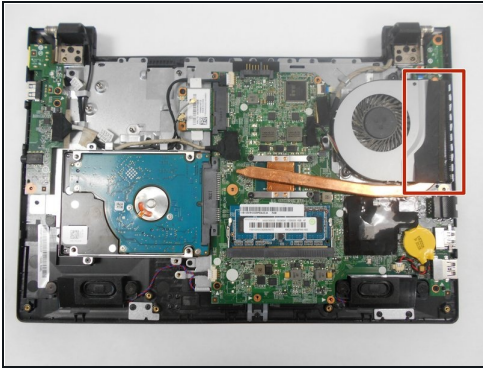
## Step 13



- Using a #0 Phillips screwdriver, unscrew the four 3mm captive screws securing the copper tube onto the motherboard.
- ⓘ These captive screws are secured by plastic washer to the copper tube and will remain in the heat sink assembly during removal.

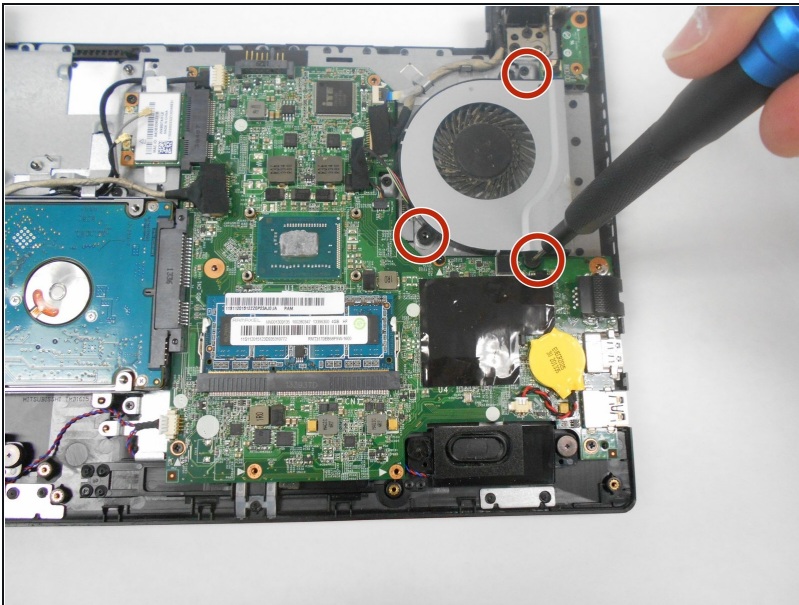


## Step 14



- Remove the tape connecting the copper tubing to the cooling fan.
- Lift and remove the heat sink assembly.

## Step 15



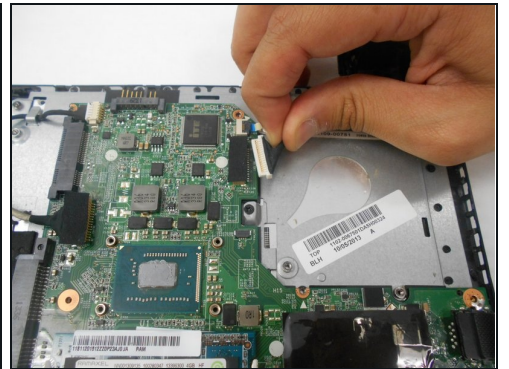
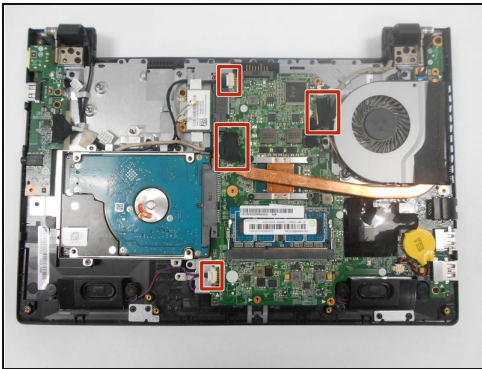
- Using a #0 Phillips screwdriver, remove the three 3mm screws around the perimeter of the fan.

## Step 16



- Remove the wiring from the motherboard by gently pulling the wire connector at the base of the wires.
- Once the wires are removed, the cooling fan assembly is disconnected. You may now remove the cooling fan.

## Step 17 — Motherboard



- ① Your device may or may not have tape securing wired connections. If it is present, it must be removed before disconnecting cabling.
- Remove four cables connected to motherboard by pulling gently on connector at base of cables.

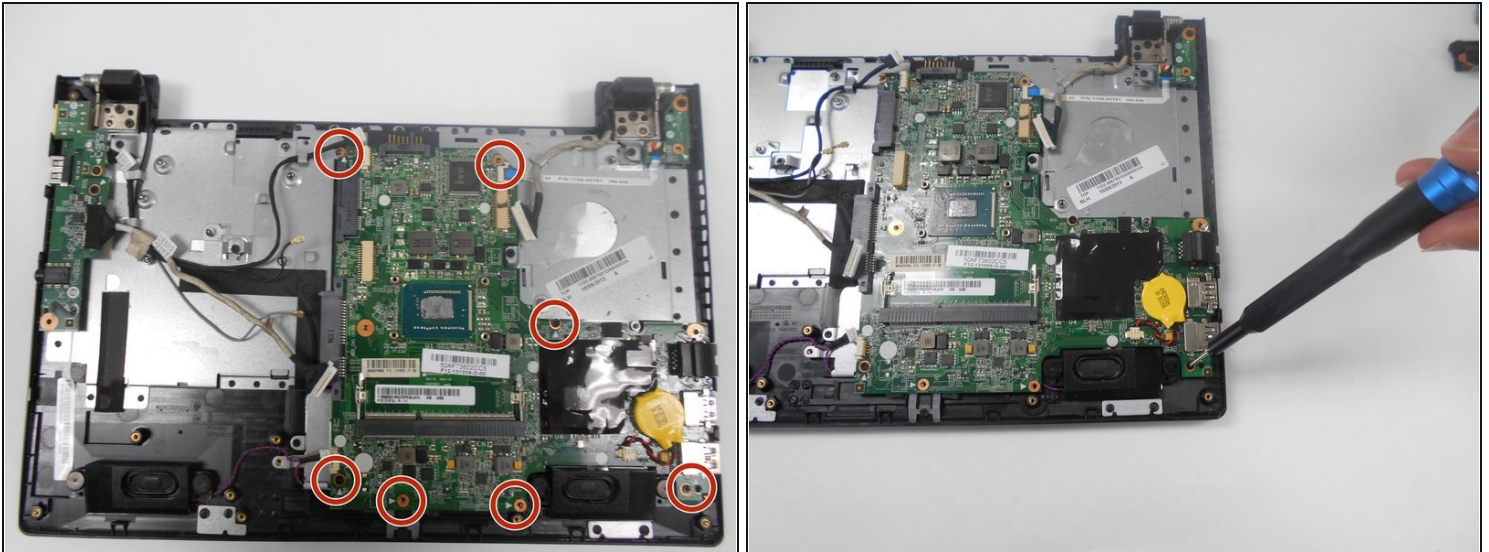


## Step 18



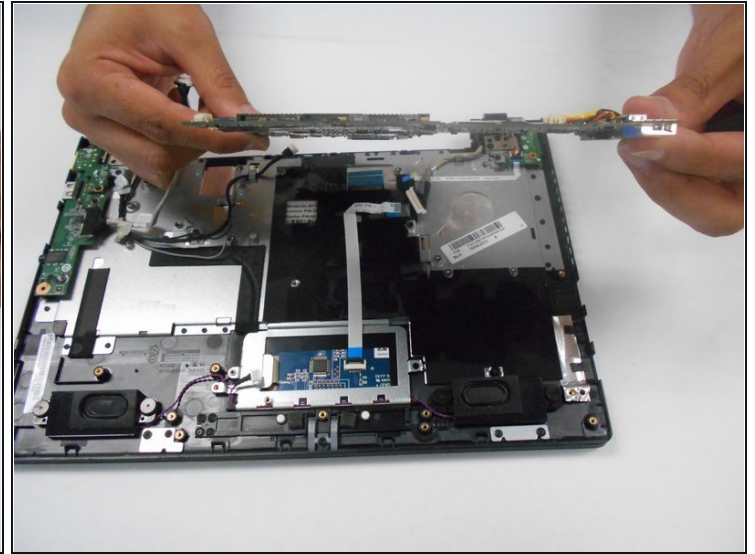
- Use a spudger to lift the connector lock to the small ribbon cable attached near where the cooling fan was located.
- After unlocking the connector, gently pull the removal tab on the ribbon cable to remove completely.

## Step 19



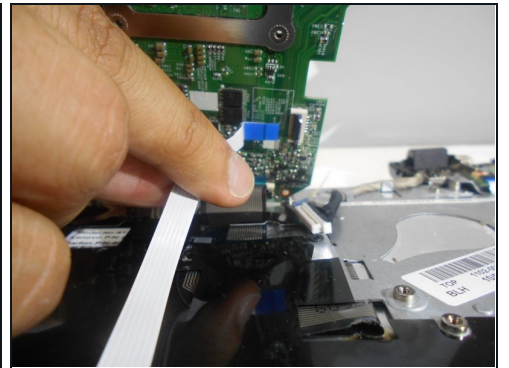
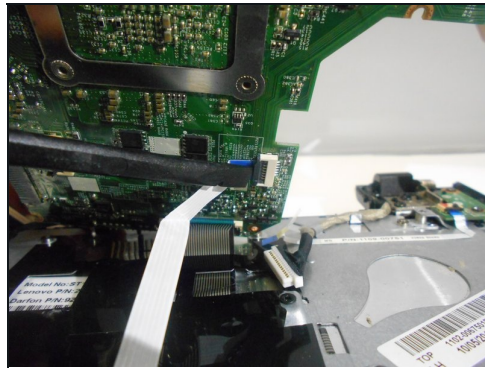
- Using a #0 Phillips screwdriver, remove the seven 3mm screws securing the motherboard to the chassis.

## Step 20



- Slowly tilt the motherboard forward so you can access the bottom.

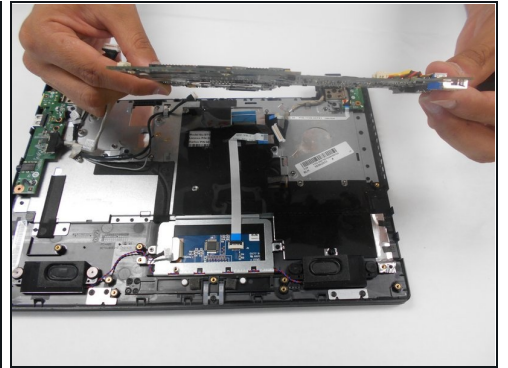
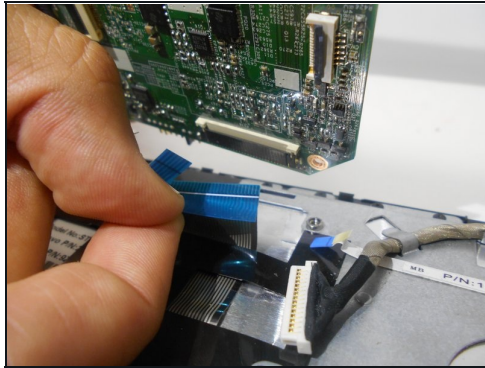
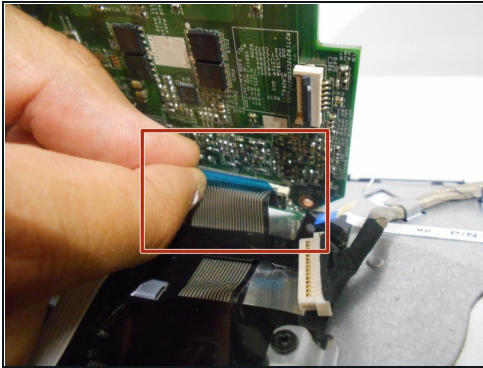
## Step 21



- Using a spudger, remove the smaller of the two ribbon cables by lifting on the black connector.
- Once connector is lifted, gently pull on the ribbon cable to remove it.



## Step 22



- Remove the second (and last) ribbon cable from the motherboard by gently pulling on the blue pull tab.
- Lift and remove motherboard from laptop chassis.

---

To reassemble your device, follow these instructions in reverse order.