



# HP Elite x2 G1 1012 Motherboard Replacement Guide

This is a replacement guide for HP Elite x2 G1 1012 motherboard that was launched in May 2016.

Written By: Hanif Norhisham



## INTRODUCTION

If the tablet experiences one of the three symptoms below, there might be a problem with the motherboard.

- The initial start-up functions appear like indicative light, fan, and hard drive sound, but disappears after a while, i.e., 5 – 3 minutes.
- A high pitched sound comes from the laptop when you press the “on” button.
- Your screen is projecting a black screen, even though all other components such as fans, indication light and hard drive seems to be working perfectly.

Before going through the replacement process, make sure your tablet is turned off and not connected to the power cord.



### TOOLS:

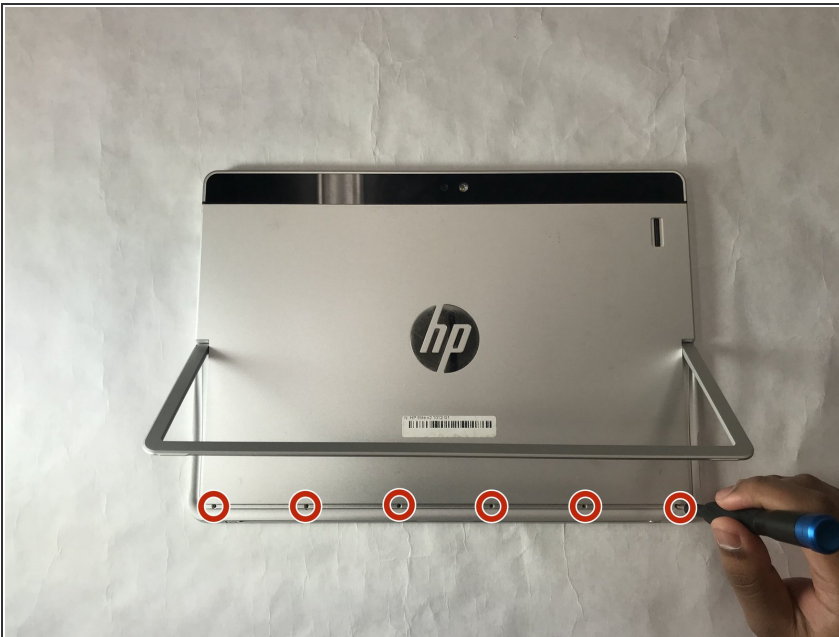
- [Suction Handle](#) (1)
  - [Tweezers](#) (1)
  - [Spudger](#) (1)
  - [Phillips #0 Screwdriver](#) (1)
  - [T5 Torx Screwdriver](#) (1)
-

## Step 1 — Motherboard



- Detach the keyboard from the screen.

## Step 2

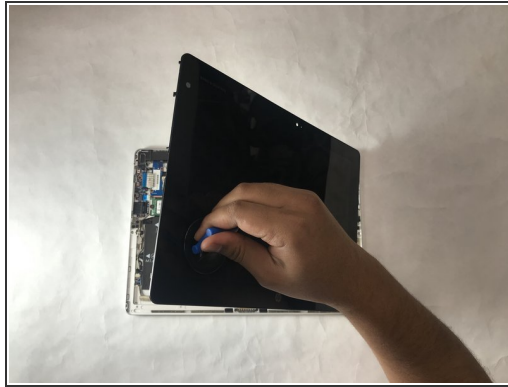
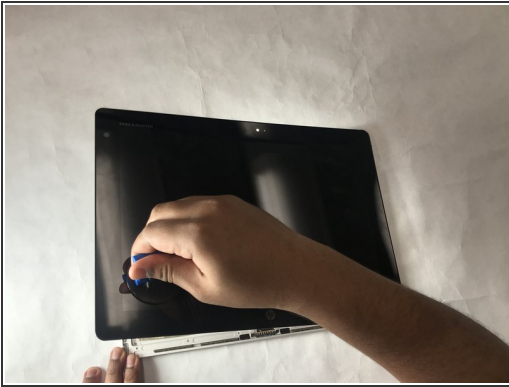


- While the screen is facing down, remove six 3.0 mm Torx T5 screws under the stand.

ⓘ The screws were not available when we received our device.

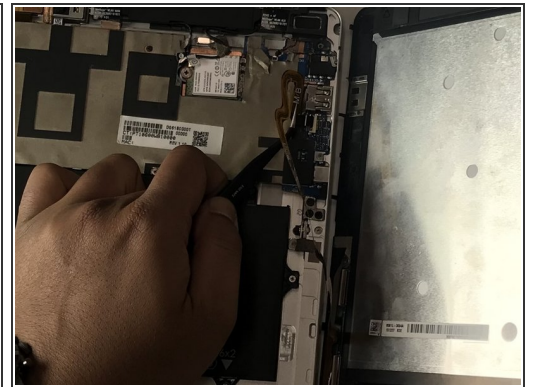
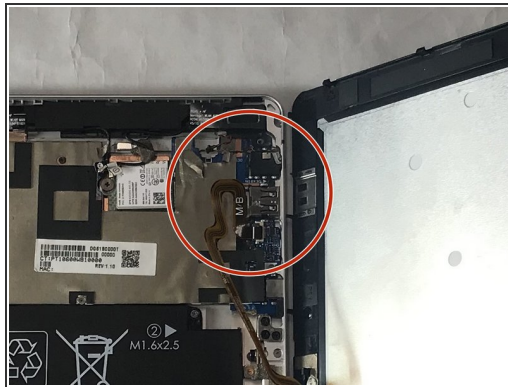


## Step 3



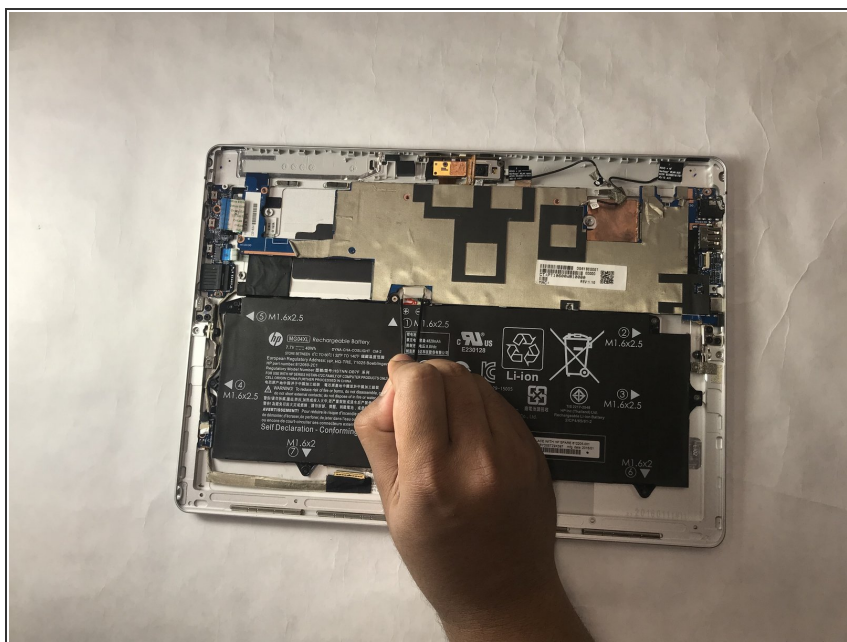
- Use a suction cup to remove the screen panel.

## Step 4



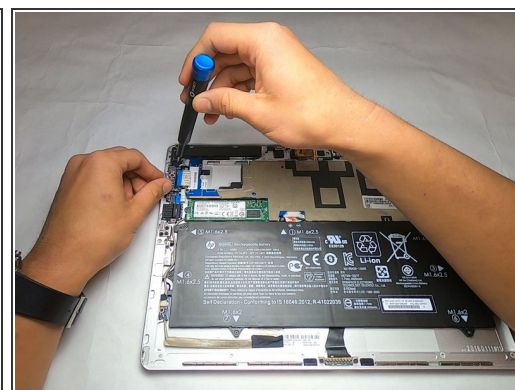
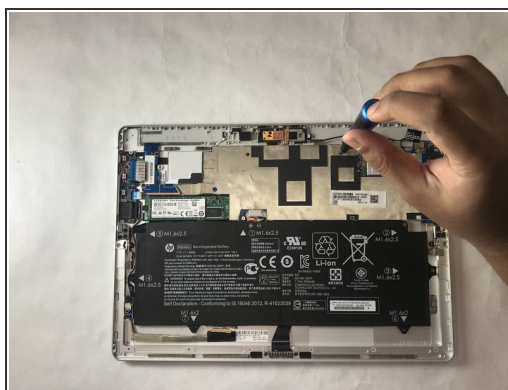
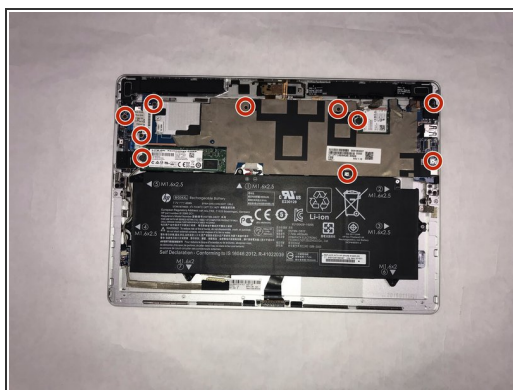
- Detach flex cable from motherboard using tweezers.

## Step 5



- Unplug the battery wire attached to the motherboard using tweezers.

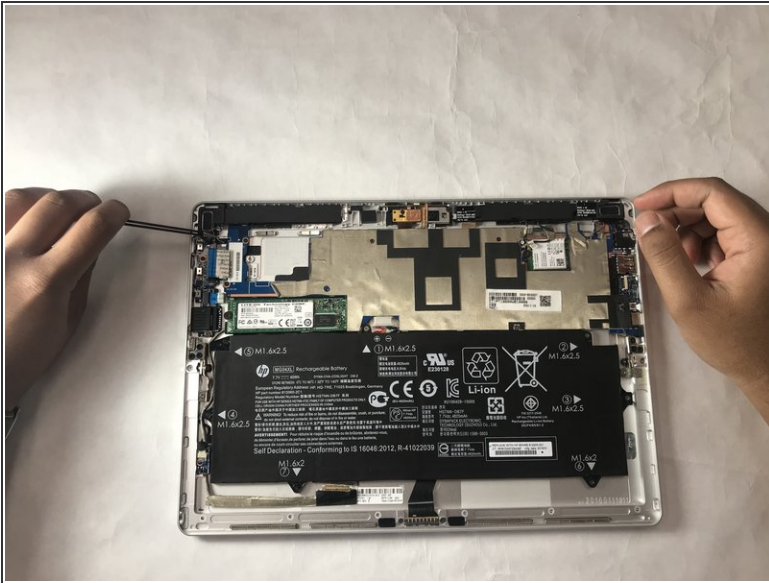
## Step 6



- Remove ten 2.7mm screws using the Phillips #0 screwdriver.

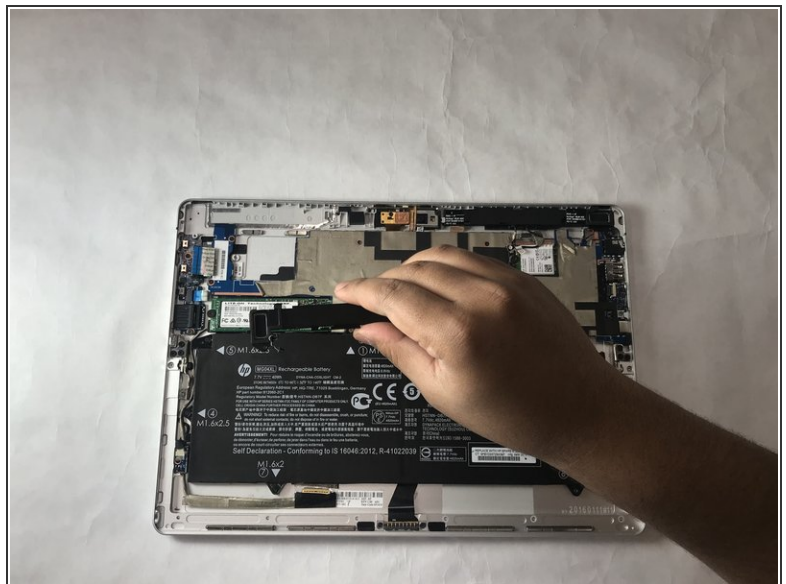
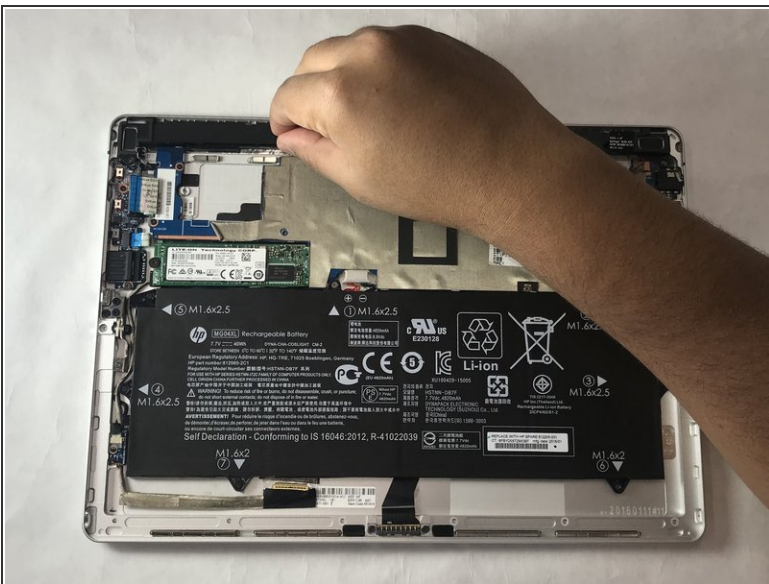


## Step 7



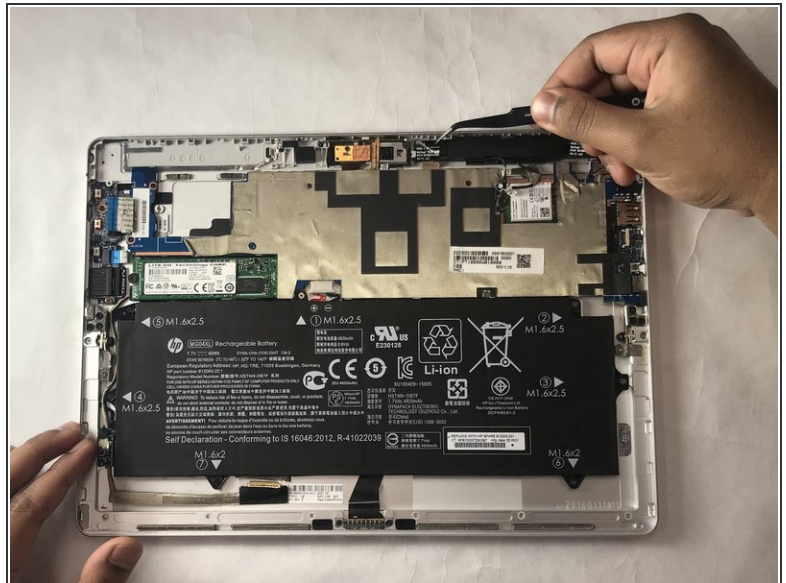
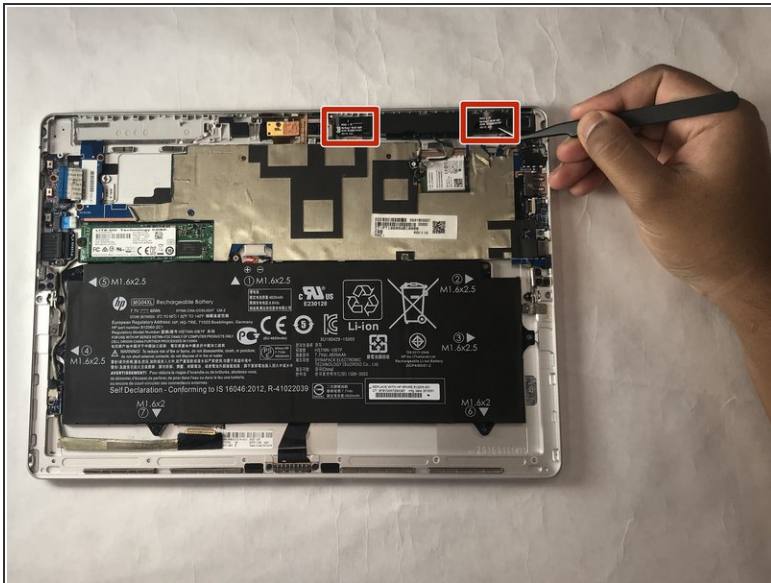
- Unplug the speaker wire attached to the motherboard.

## Step 8



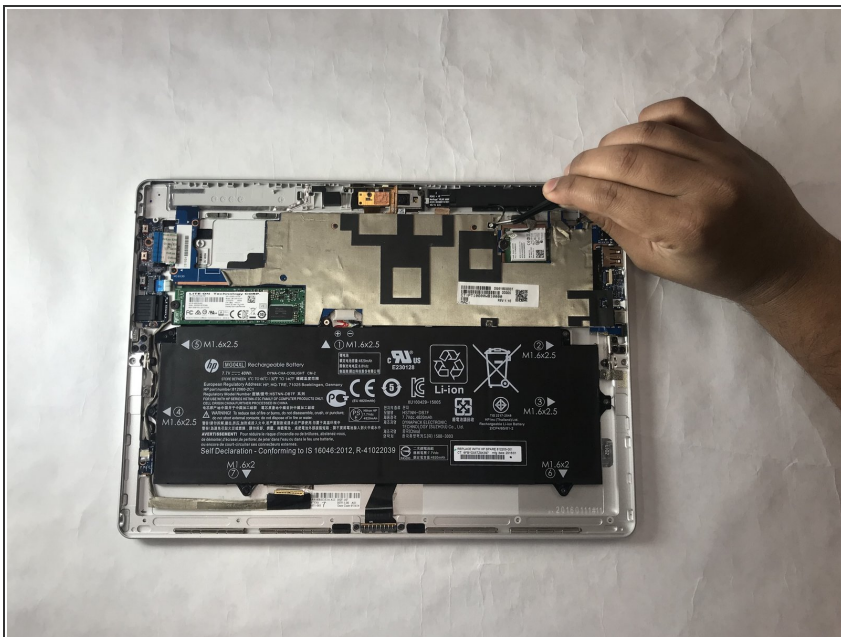
- Detach the left speaker.

## Step 9



- Detach the two stickers highlighted from the right speaker.

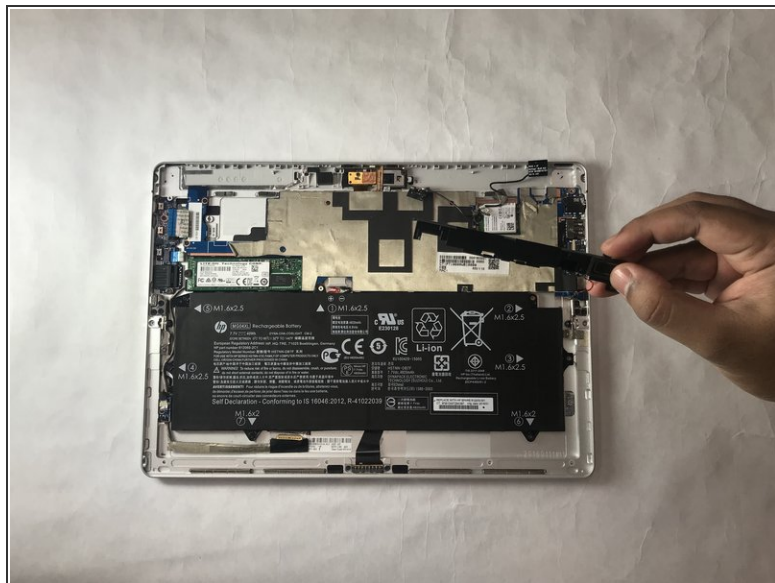
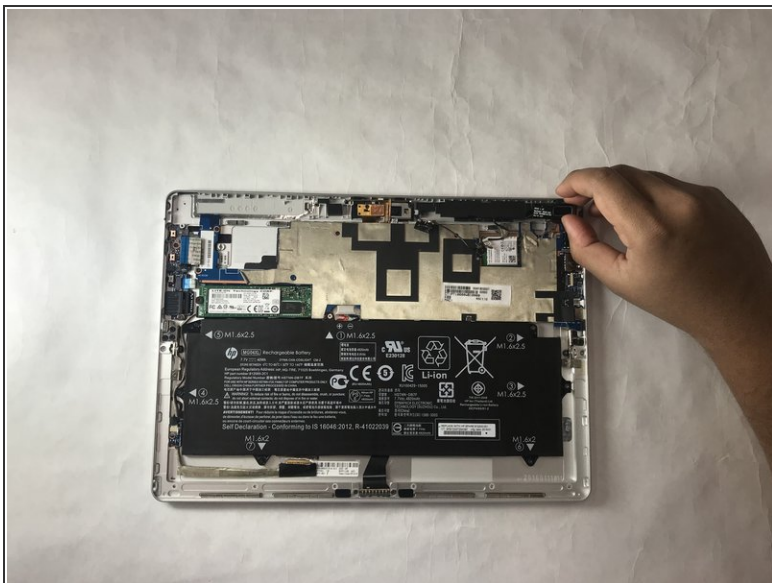
## Step 10



- Detach the right speaker cables from the motherboard using tweezers.

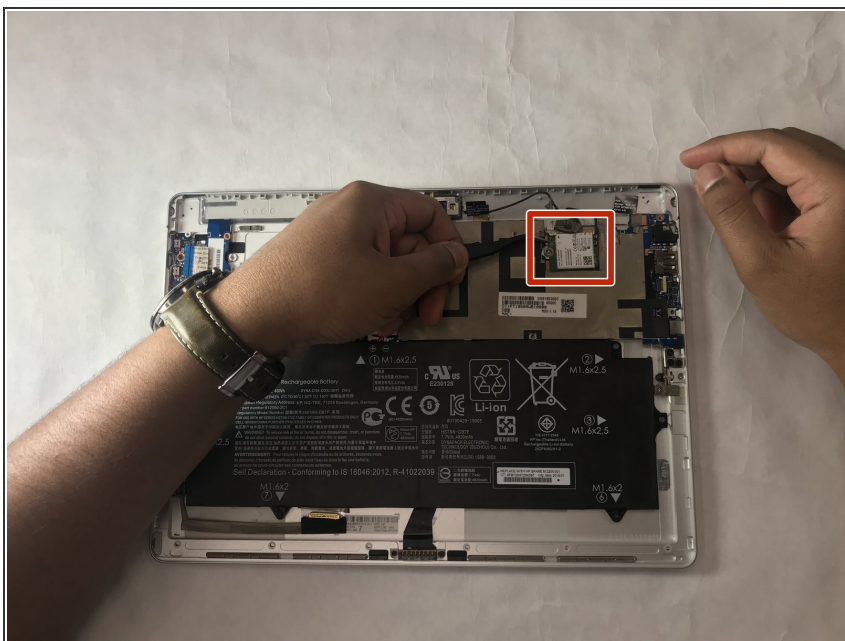


## Step 11



- Detach the right speaker.

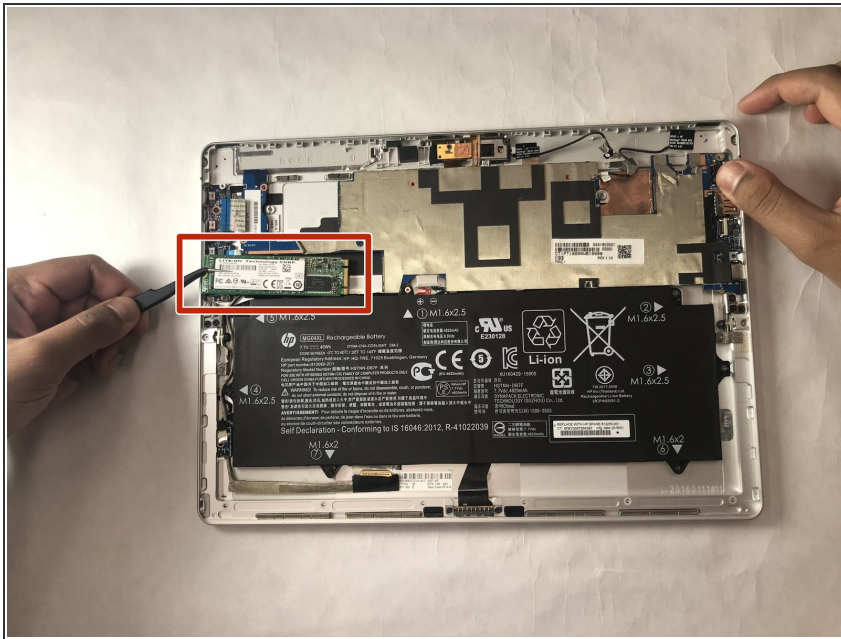
## Step 12



- Detach the WWAN card from the motherboard by pulling it to the left using tweezers.

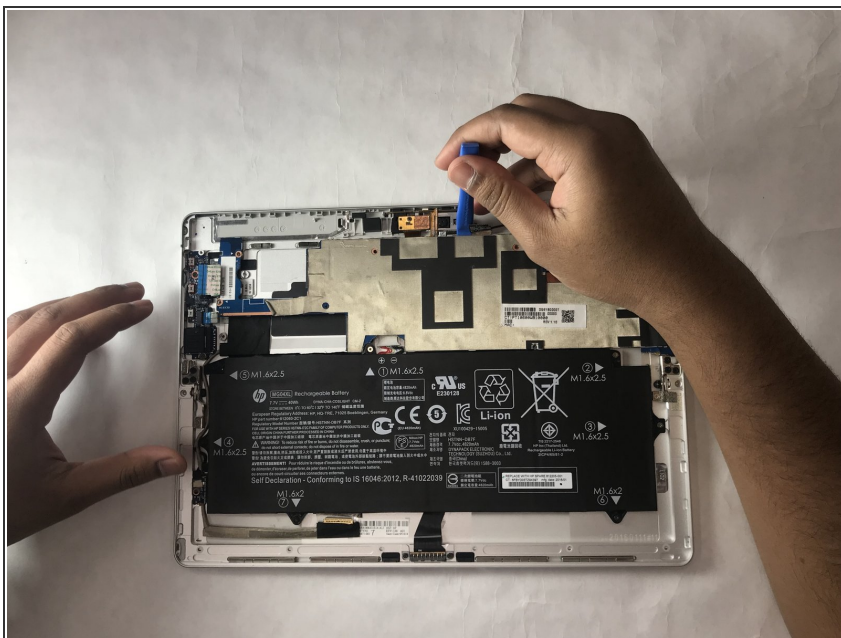


## Step 13



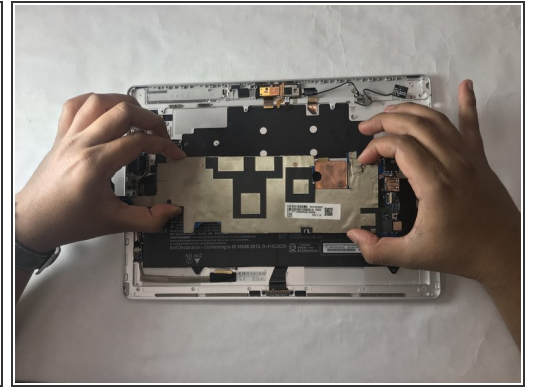
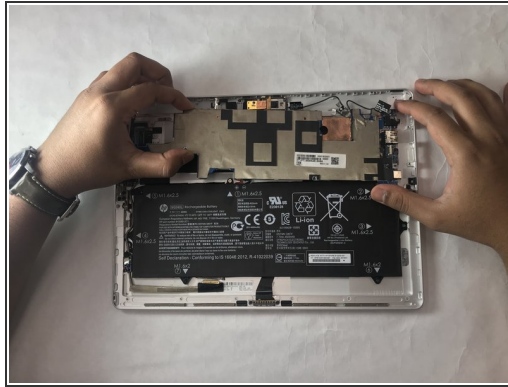
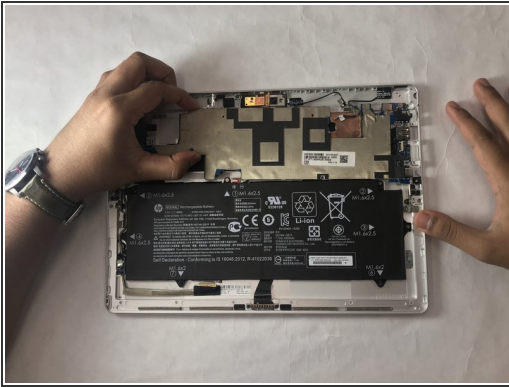
- Detach the SSD from motherboard by pulling it to the left using tweezers.

## Step 14



- Use the plastic opening tool to loosen the motherboard.

## Step 15



- Detach the motherboard from the casing.
- ⓘ Apply pulling force to the left to pull out the ports from the casing safely.

To reassemble your device, follow these instructions in reverse order.