



Google Pixel Slate Screen Replacement

How to remove and replace the screen from Google Pixel Slate.

Written By: Spencer Alonge



INTRODUCTION

This guide will show you how to remove and replace the screen from Google Pixel Slate.

A screen replacement is necessary if your screen display is cracked or damaged that can inhibit the view and touchscreen functionality of the device.

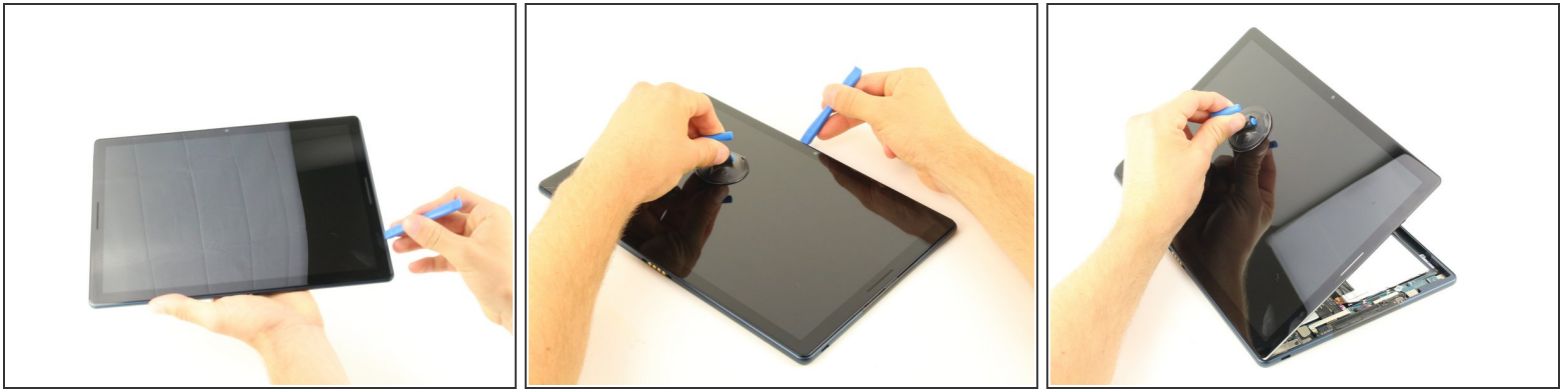
Before you start, make sure to completely turn off the power of the phone and disconnect all external power sources.

Please be aware that the replacement of the screen must be done with great care, as you can potentially damage other parts of the device.

TOOLS:

- [Suction Handle](#) (1)
 - [iFixit Opening Tool](#) (1)
-

Step 1 — Screen



- Orient the Google Pixel Slate so that the screen is facing upwards.
- Use the iFixit opening tool to separate screen from main body.
- Use the suction cup to remove the screen from the body of the device.

Step 2



- Gently disconnect the three flat-wires from the screen.
- Carefully separate and remove the screen from the body of the device.

To reassemble your device, follow these instructions in reverse order.