



BLU Studio G Motherboard Replacement

This guide will show you how to replace the motherboard in your BLU Studio G smartphone.

Written By: Christian Perez



INTRODUCTION

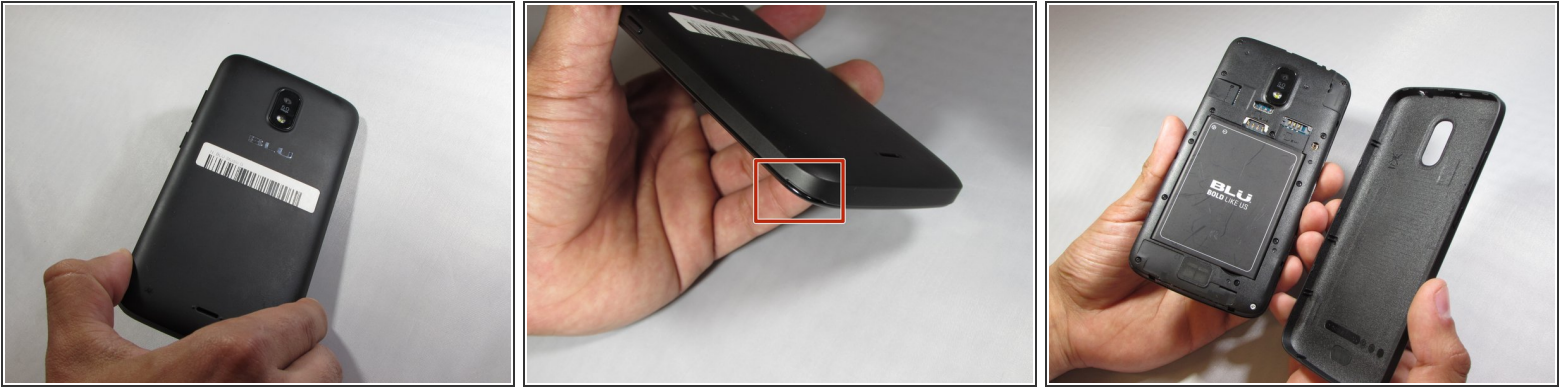
The motherboard of the BLU Studio G also contains the headphone jack, antenna, and charging port. If any of these components were to break, you may need to do a full motherboard replacement to fix the problem.



TOOLS:

- [Phillips #0 Screwdriver](#) (1)
 - [Metal Spudger](#) (1)
 - [Screwdriver](#) (1)
 - [Precision Tweezers Set](#) (1)
 - [Spudger](#) (1)
-

Step 1 — Motherboard Prerequisite



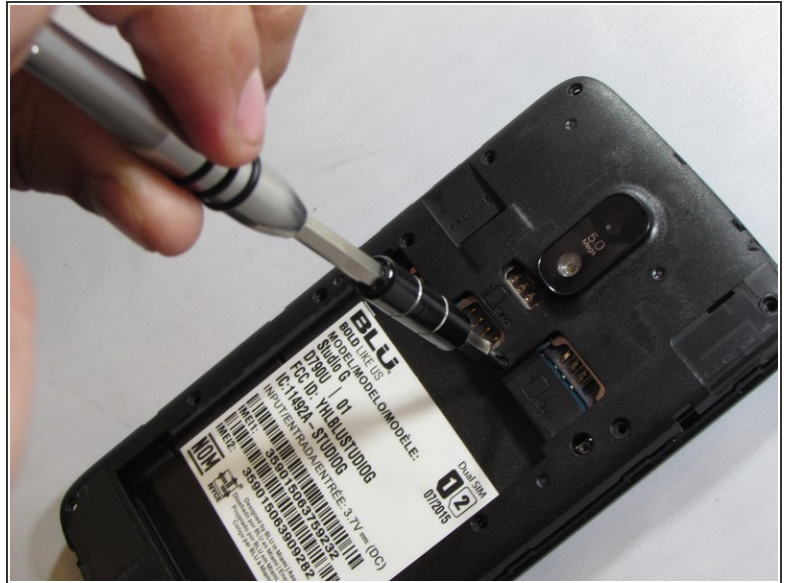
- To remove the back cover, turn the device over, locate the safety indented notch on the bottom left corner as the screen is facing down.
- Using your finger (or spudger), prop upwards to detach the back cover properly from the rest of the device.

Step 2



- Locate the notch at the bottom of the battery for safe removal.
- Carefully lift battery from the notch making sure not to puncture the battery rubber casting.

Step 3



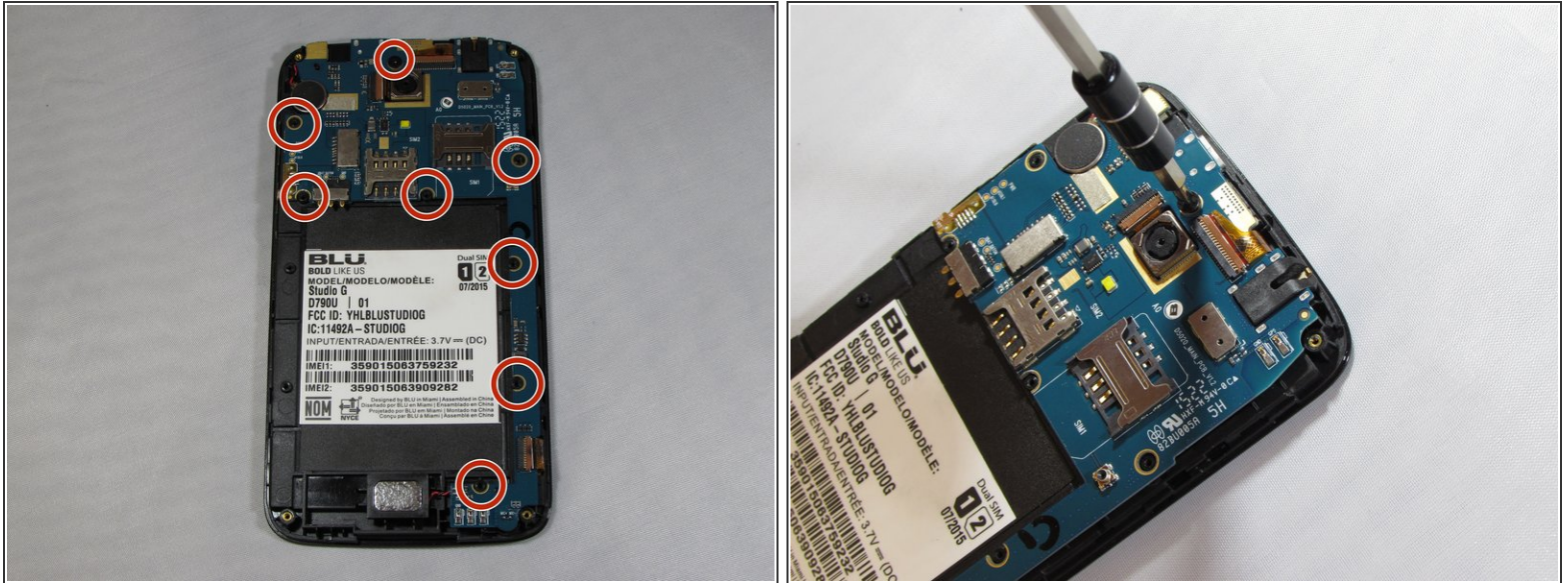
- Unscrew the 13 Phillips #0 screws from the back of the phone.

Step 4



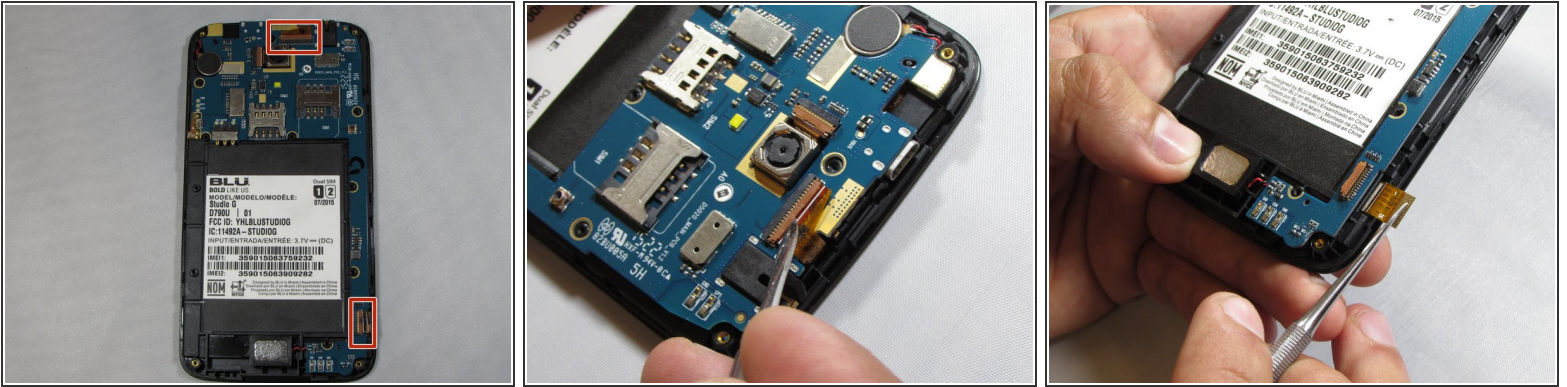
- To remove the back panel, slide the metal spudger into 3 notches on left and right side outside edges of the device.
- With some slow but strong pressure insert and dislodge the panel from the rest of the device. These are tough but small clips that hold together the back panel.

Step 5



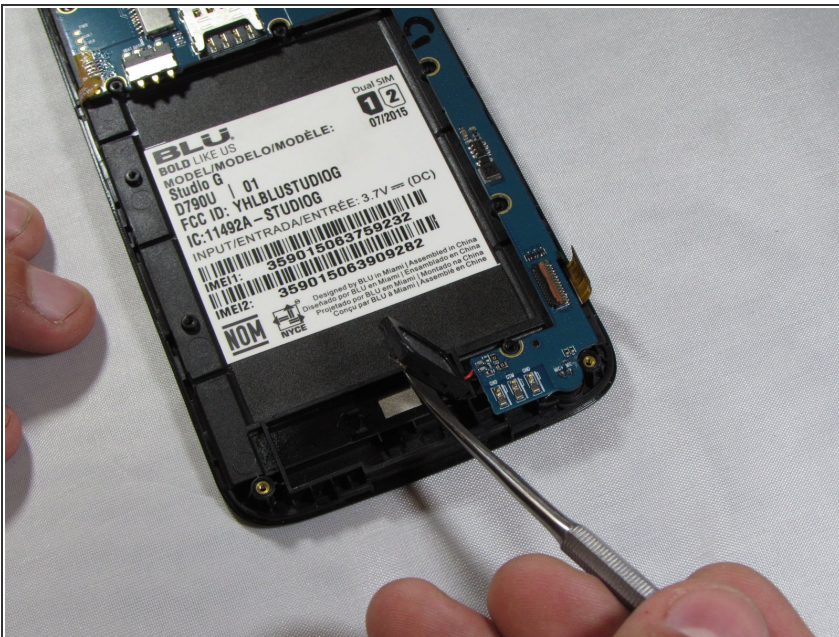
- Remove all 8 3.175 mm screws that secure the motherboard in place.
- Remove by turning counter clockwise using a Phillips #0 bit with the correct screwdriver using medium/ firm pressure, assuring that you don't strip the screws.
- Set aside

Step 6



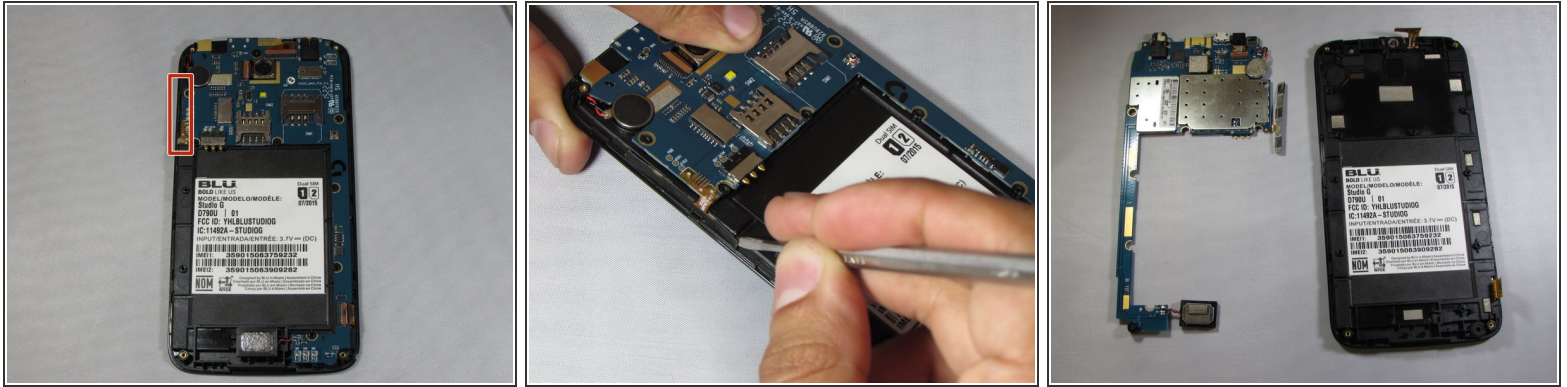
- Locate the two connector clamps on the motherboard.
- Carefully place the tip of a precision tweezer or metal spudger under the short light brown plastic clamp. This will release the connectors.
- Gently pull out the connectors from the clamp inserts by pulling slowly away from of device using precision tweezers.

Step 7



- Locate the speaker on the bottom of the device and slowly pry upwards and to the right as its wired to the motherboard.

Step 8



- Locate the volume button strip on the left side of the device and slowly pry outwards from one end to the other from the device.
- Carefully pull over the motherboard.

To reassemble your device, follow these instructions in reverse order.