



Lenovo IdeaPad 100s-14IBR WiFi/ Bluetooth Card Replacement

Welcome to this comprehensive guide on...

Written By: Bin Feng



INTRODUCTION

Welcome to this comprehensive guide on replacing the WiFi/Bluetooth card in your Lenovo IdeaPad 100s-14IBR laptop. Over time, technology advances, and upgrading certain components, such as the wireless card, can significantly enhance your laptop's connectivity and performance.

Before you begin, ensure you have the replacement card compatible with your laptop model and have the necessary tools at hand, specified in the "What You Need" section. Additionally, take the time to back up your data and follow all safety precautions to avoid any damage during the process.

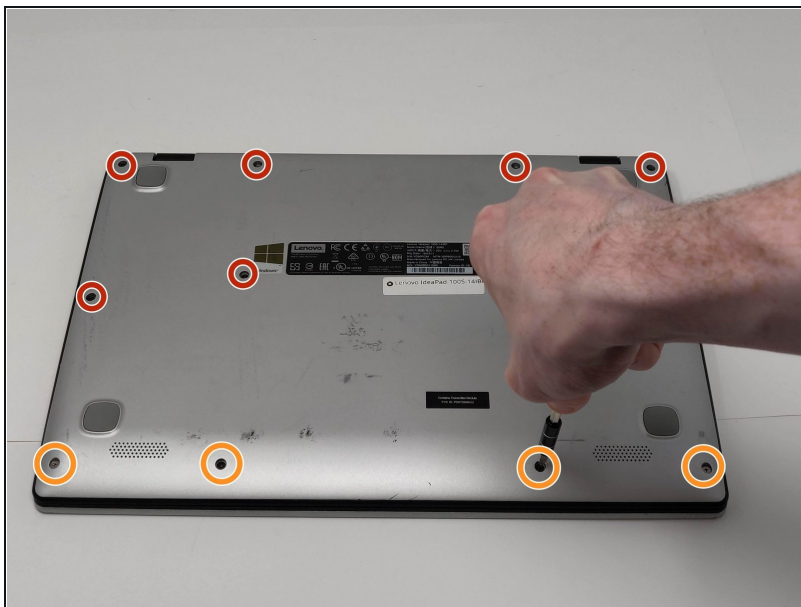
Follow along closely as we guide you through each step, making the WiFi/Bluetooth card replacement a straightforward experience!

TOOLS:

Phillips #00 Screwdriver (1)

Spudger (1)

Step 1 — WiFi/ Bluetooth Card



- Remove the eight 4mm PH00 screws.
- Remove the four 2mm PH00 screws.

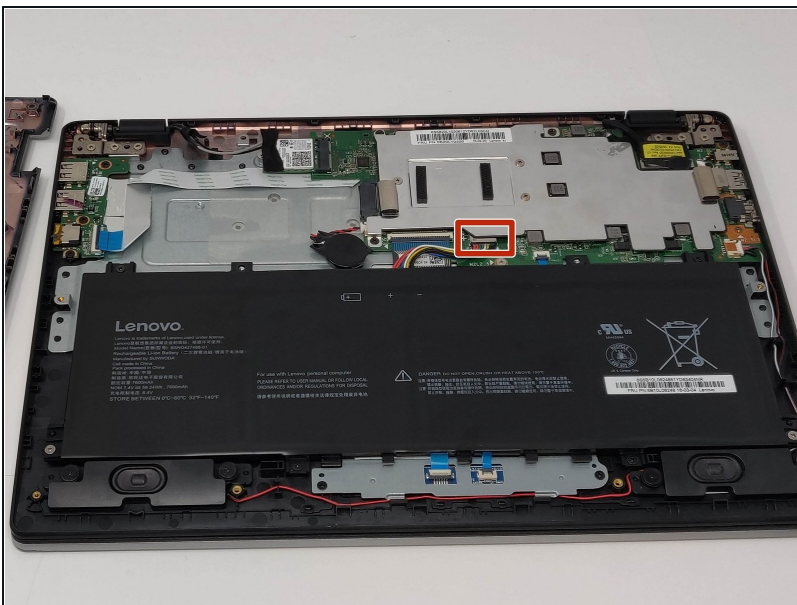
Step 2



- Use the nylon spudger to loosen the back cover from the back of the device.

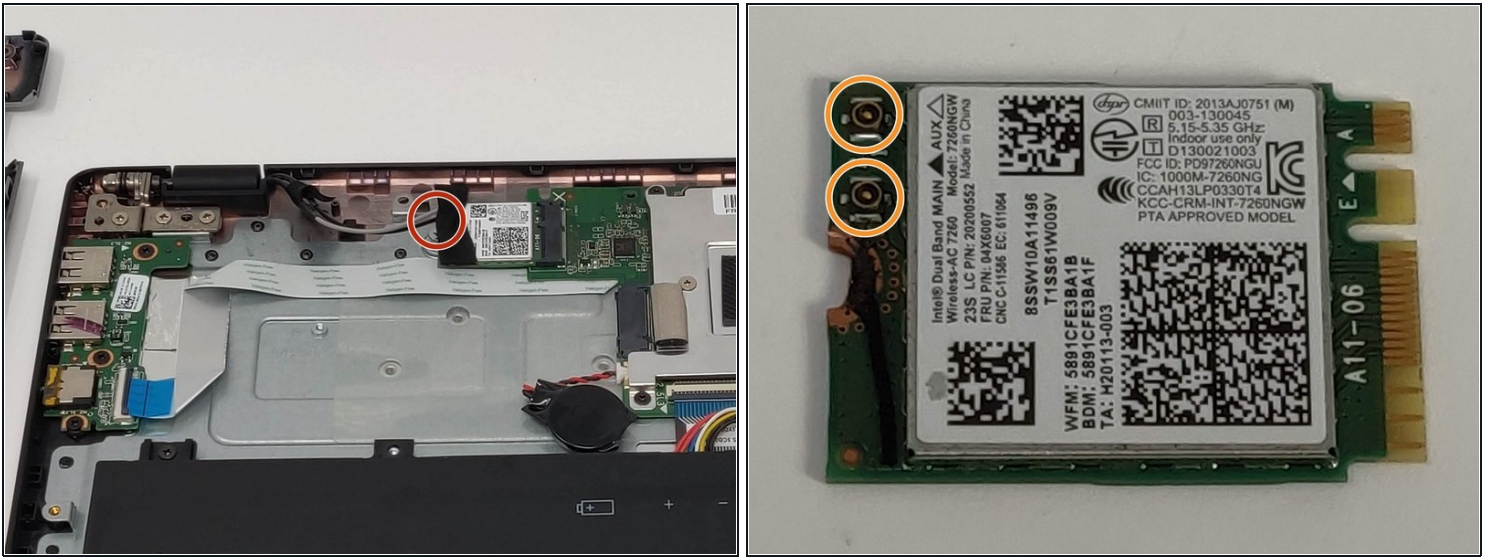
⚠ You may hear a bit of a snapping sound, but this is normal.

Step 3



- For safety reasons, disconnect the wires connecting the battery to the motherboard with the nylon spudger.

Step 4



- Remove the tape and unscrew the single 2mm PH00 screw.
- Pull out the current WiFi/Bluetooth card, unplugging the two wires connected to it.

Follow the guide in reverse to reassemble your device.

Congratulations on successfully completing the WiFi/Bluetooth card replacement for your Lenovo IdeaPad 100s-14IBR laptop! By following this guide, you've taken a proactive step towards improving your device's wireless capabilities, ensuring a more seamless and reliable connectivity experience.

Remember to power on your laptop and test the new card to ensure it functions correctly. If you encounter any issues, double-check your connections and revisit the steps to ensure everything is in place. Feel free to revisit this guide or seek additional assistance if needed.