



Asus Chromebook C300SA-DS02 Trackpad Replacement

This guide will explain the process of replacing your broken or stuck trackpad in the Asus Chromebook C300SA-DS02.

Written By: Austin Blakely



INTRODUCTION

Use this guide to replace a trackpad on your Asus Chromebook C300SA-DS02 that has stopped registering input or registers incorrect input. The trackpad is a part of the keyboard assembly and is fairly easy to access.



TOOLS:

- [iFixit Opening Tools](#) (1)
 - [Phillips #0 Screwdriver](#) (1)
 - [Spudger](#) (1)
-

Step 1 — Keyboard




i Power the laptop off and make sure the charger is unplugged before starting.

- Remove the eight 8.0mm Phillips #0 screws on the bottom of the laptop.
- Remove the three 6.0mm Phillips #0 screws.

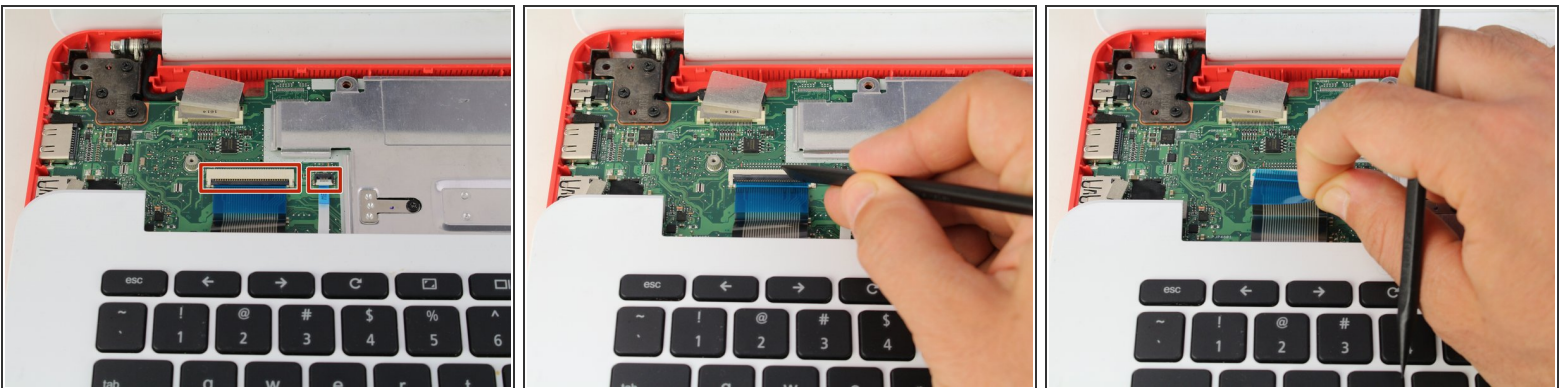
Step 2



- Open the laptop.
- Using an iFixit opening tool, pry along the edges of the keyboard.
- Lift the keyboard and slide it gently towards you.

 Do not completely remove the keyboard. It is still connected to the back panel by a pair of ribbon cables.

Step 3



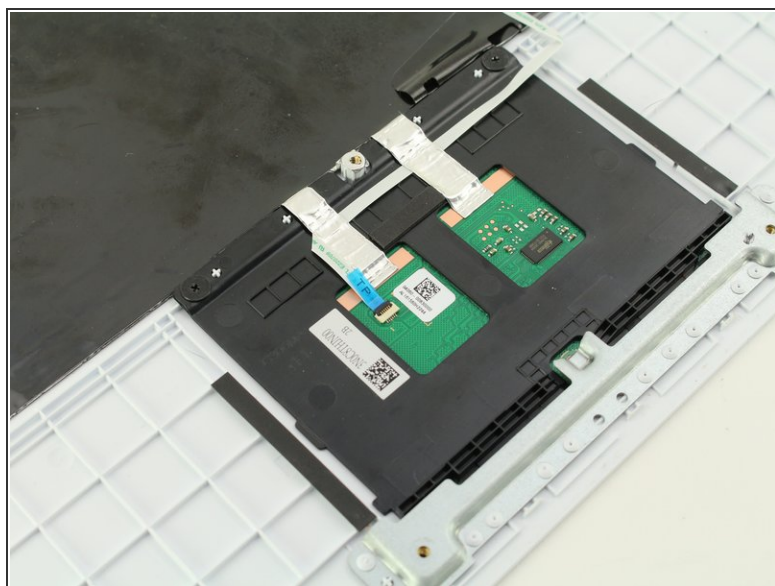
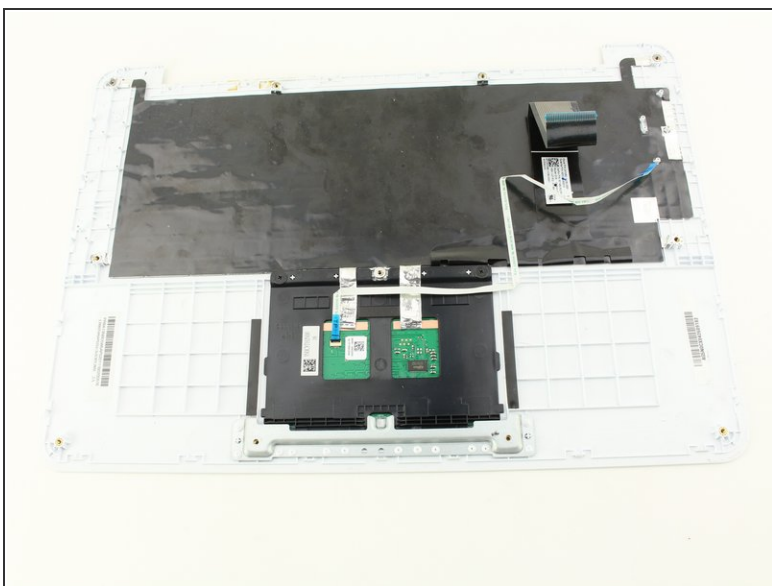
- Disconnect the two ZIF connectors by prying up the locking bar with a spudger and removing the ribbon cable.

Step 4



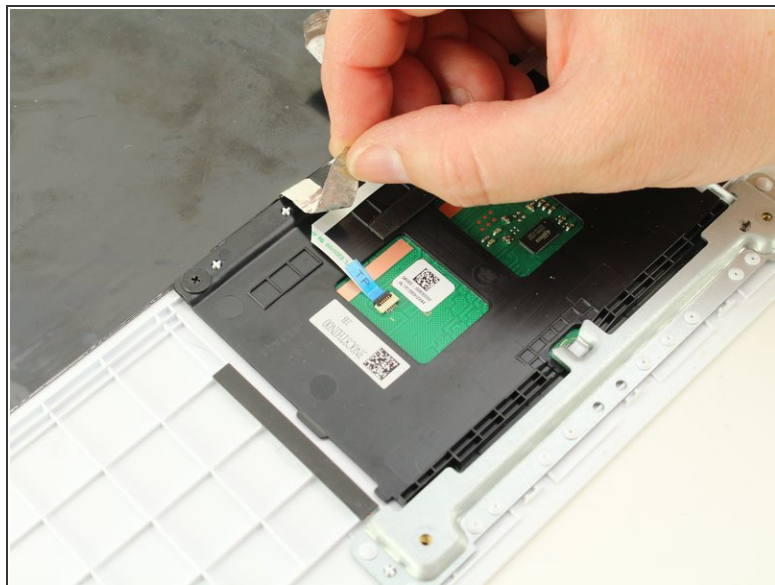
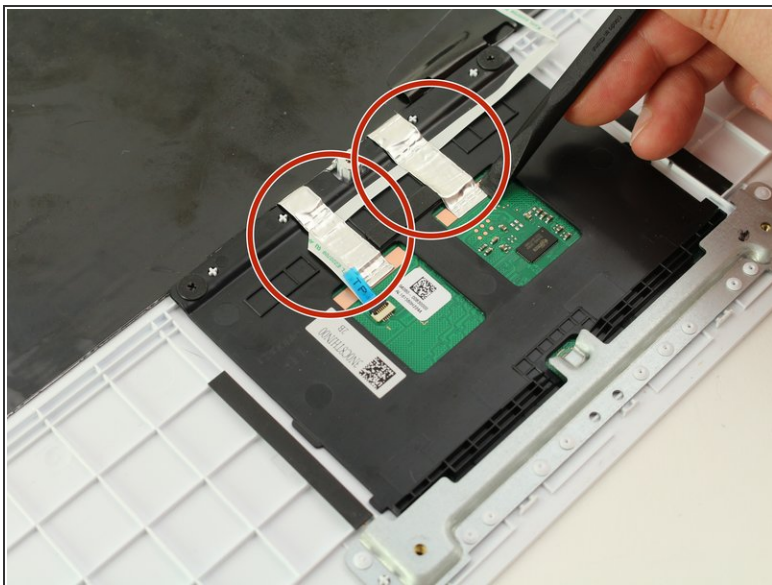
- Remove the keyboard from the laptop.

Step 5 — Trackpad



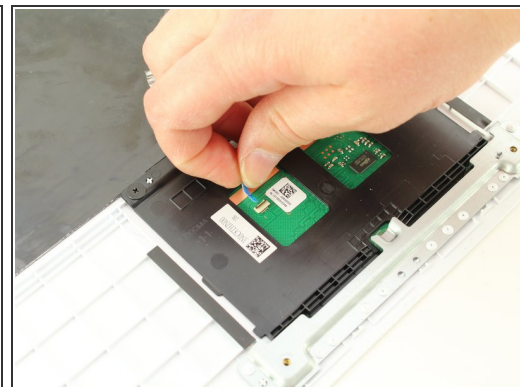
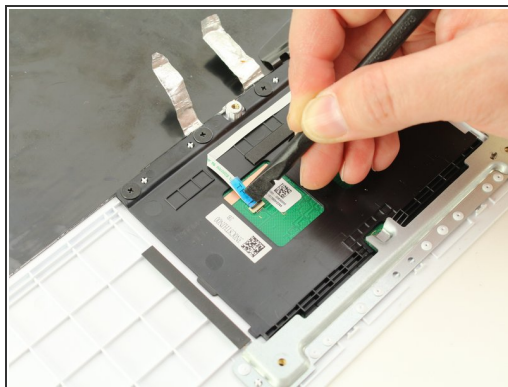
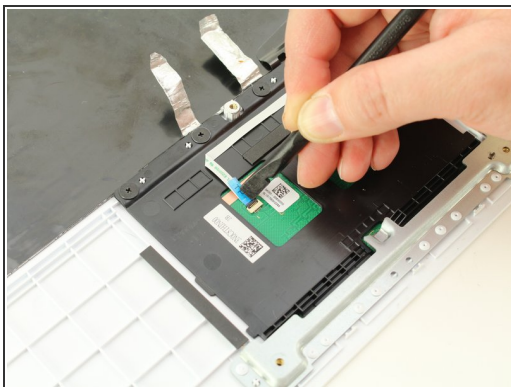
- Flip over the keyboard assembly to reveal the trackpad beneath.

Step 6



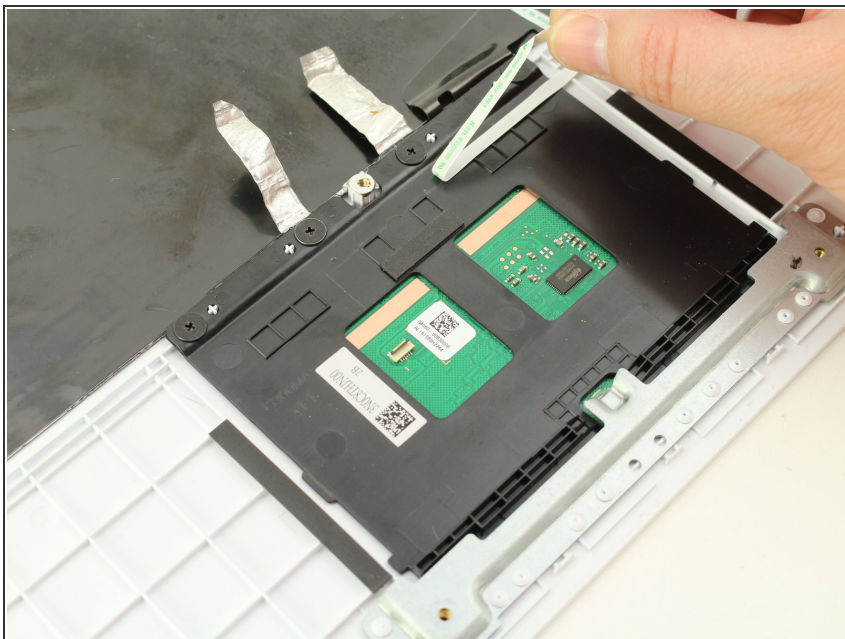
- Peel up the two pieces of foil tape holding down the trackpad.

Step 7



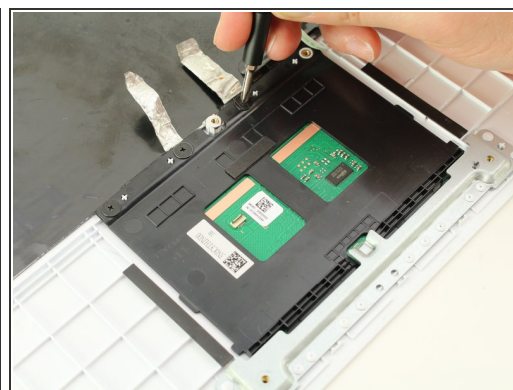
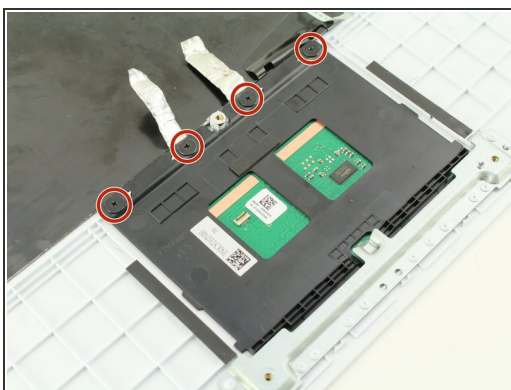
- Use a spudger to release the locking bar of the ZIF connector near the center of the trackpad.
- Slide the cable ribbon from the connector.

Step 8



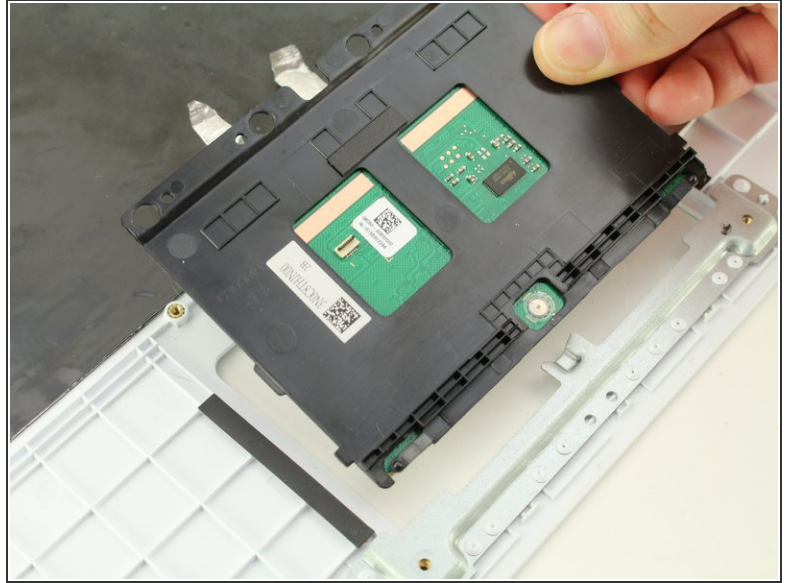
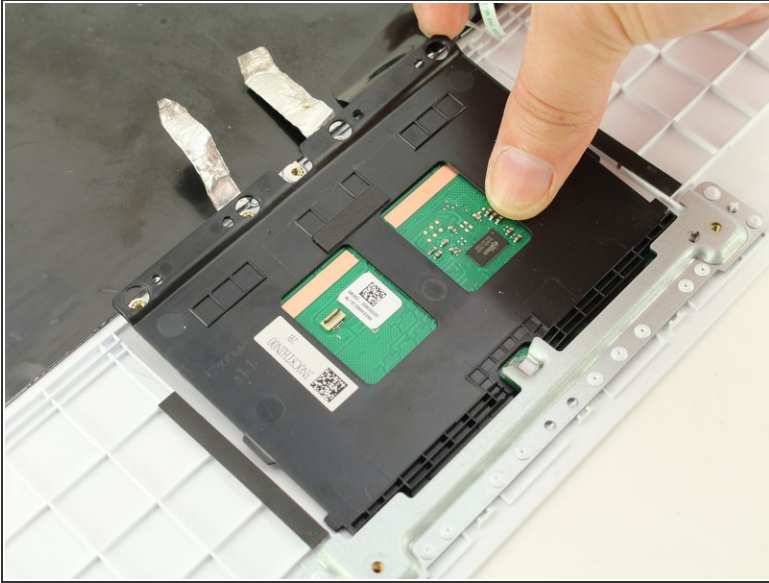
- Peel back the ribbon cable, which is adhered to the trackpad.

Step 9



- Remove the four 2.5mm Phillips #0 screws along the top edge of the trackpad.

Step 10



- Pry the trackpad from the top edge with a finger or spudger.
- Lift the trackpad up and away from the keyboard assembly.

To reassemble your device, follow these instructions in reverse order.