



Acer Nitro 5 AN515-53-55G9 Touchpad Replacement

Use this guide to replace the TouchPad in the...

Written By: Rheo Bruer



INTRODUCTION

Use this guide to replace the TouchPad in the Acer Nitro 5 Acer Nitro 5 AN515-53-55G9. This laptop has a track pad that can be replaced if damaged or broken.



TOOLS:

- [Metal Spudger](#) (1)
- [Phillips #0 Screwdriver](#) (1)
- [Spudger](#) (1)

Plastic

Step 1 — Battery



⚠ Make sure laptop is off and unplugged before beginning replacement.

- Flip the laptop upside down so that the bottom is facing up.
- Identify the RAM tray on the bottom of the laptop.

Step 2



- Use the Phillips #0 screwdriver to remove the 9mm screw in the bottom left corner of the RAM tray covering.
- Remove the RAM tray cover by prying up with a spudger.

Step 3



- Identify the Hard Drive tray to the left side of the laptop.
- Remove screw with a #0 Philips screwdriver.
- Lift up the Slot covering using a spunger.

Step 4



- Use the Phillips #0 screwdriver to remove the 9mm screws holding the back cover in place.
- Remove the screws from the hard drive and remove it from the device.

Step 5

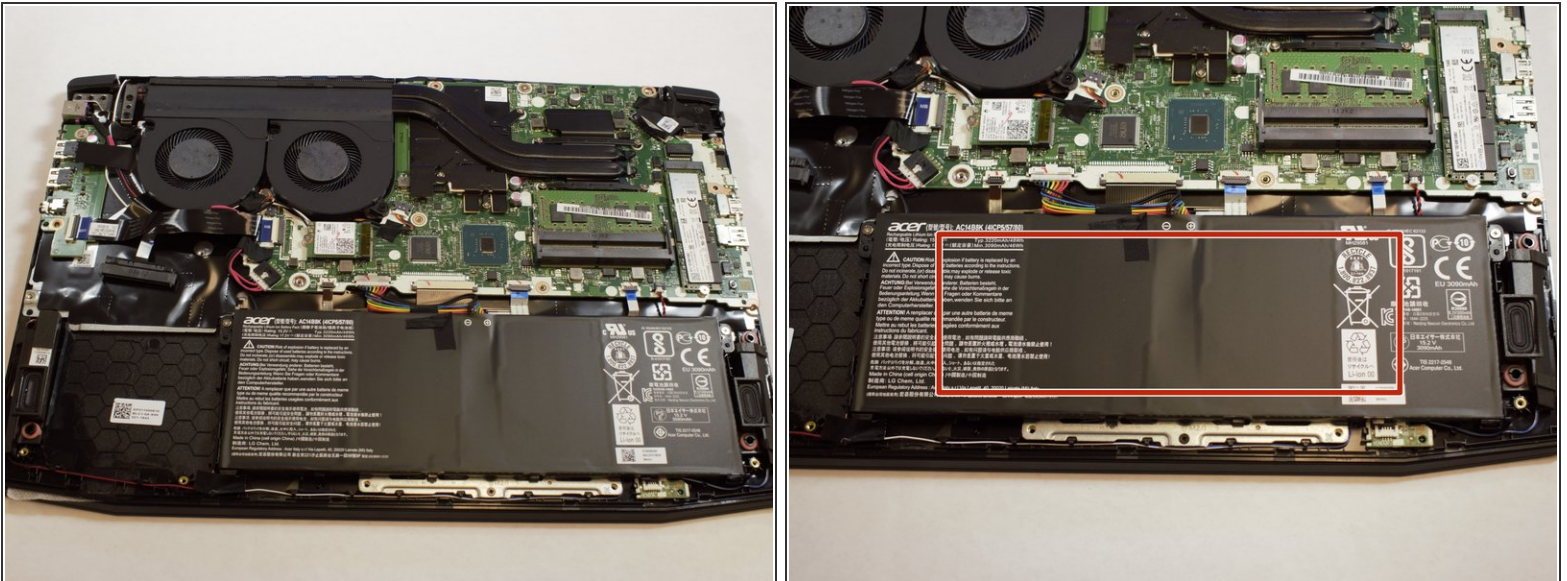


⚠ Be sure you removed the hard drive. when you open the back shell and hard drive is built in this may cause damage to cable and other components.

- Carefully remove the back shell from the device working your way around all the edges.

⚠ Do not forcefully try to separate the shell as you may cause harm to the shell.

Step 6



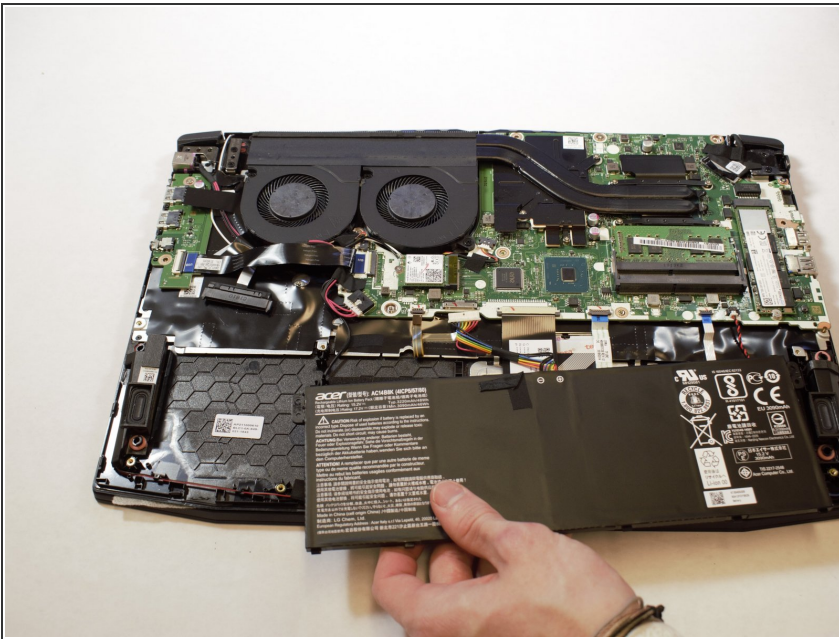
- Removing the back shell of the computer and it will look like this.
- The battery for the device is located at the bottom middle of the laptop at this orientation.

Step 7



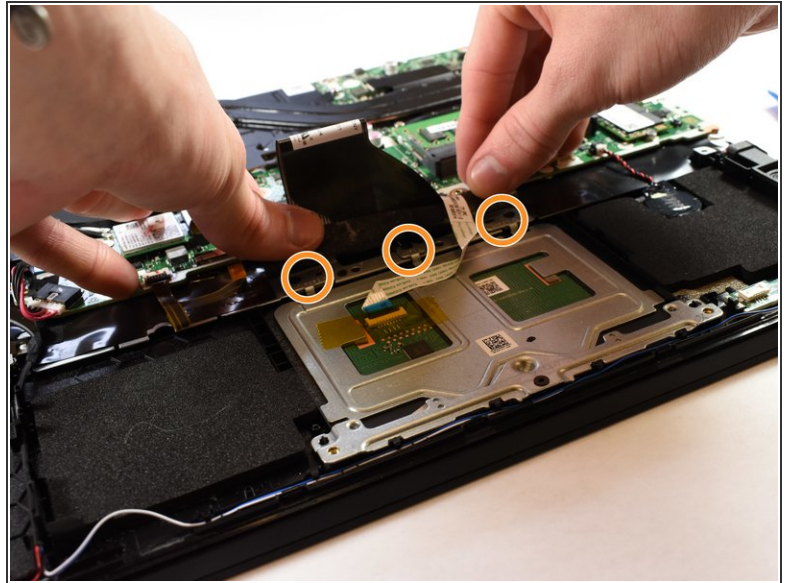
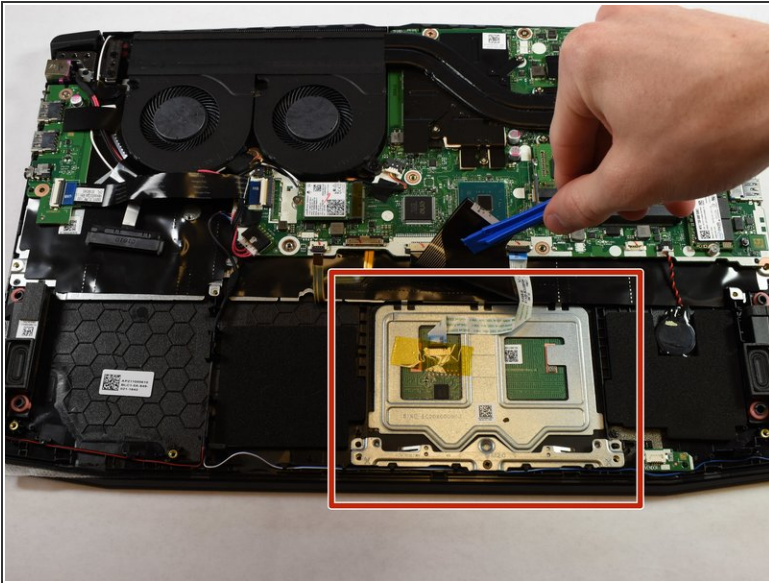
- Locate the connector of the battery to the motherboard.
- Using your fingers, slide out the connector.

Step 8



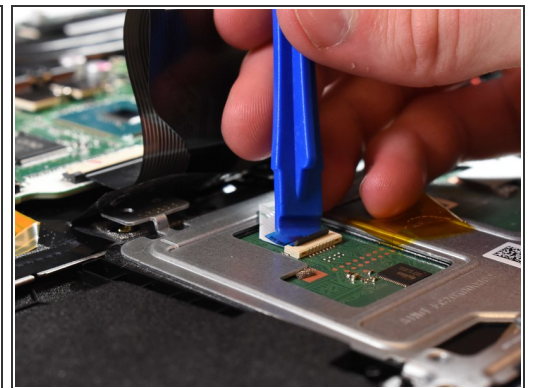
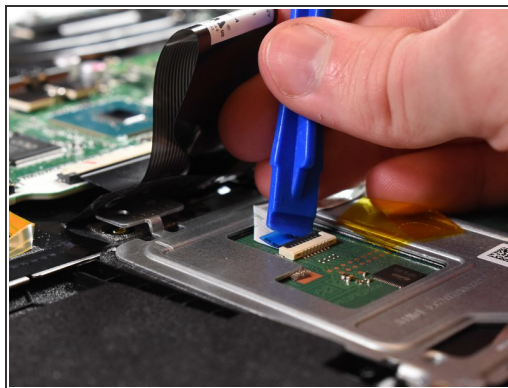
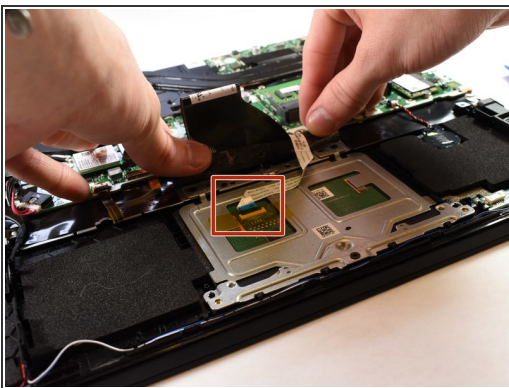
- Remove battery from device.

Step 9 — Touchpad



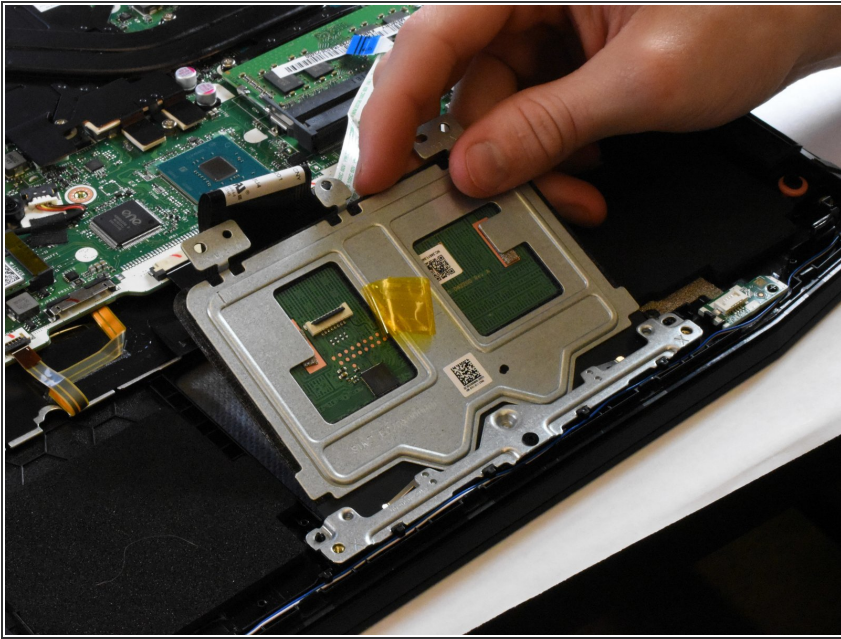
- Locate the Touchpad in the lower middle of the device.
- Locate and remove the 4mm screws that hold the Touchpad in place.

Step 10



- Locate the Touchpad's connector.
- Use a plastic spudger to pry up the small plastic clip on the connector port.
- Gently pull the cable out of the port.

Step 11



- Lift up the Touchpad and remove it from the device.

To reassemble your device, follow these instructions in reverse order.