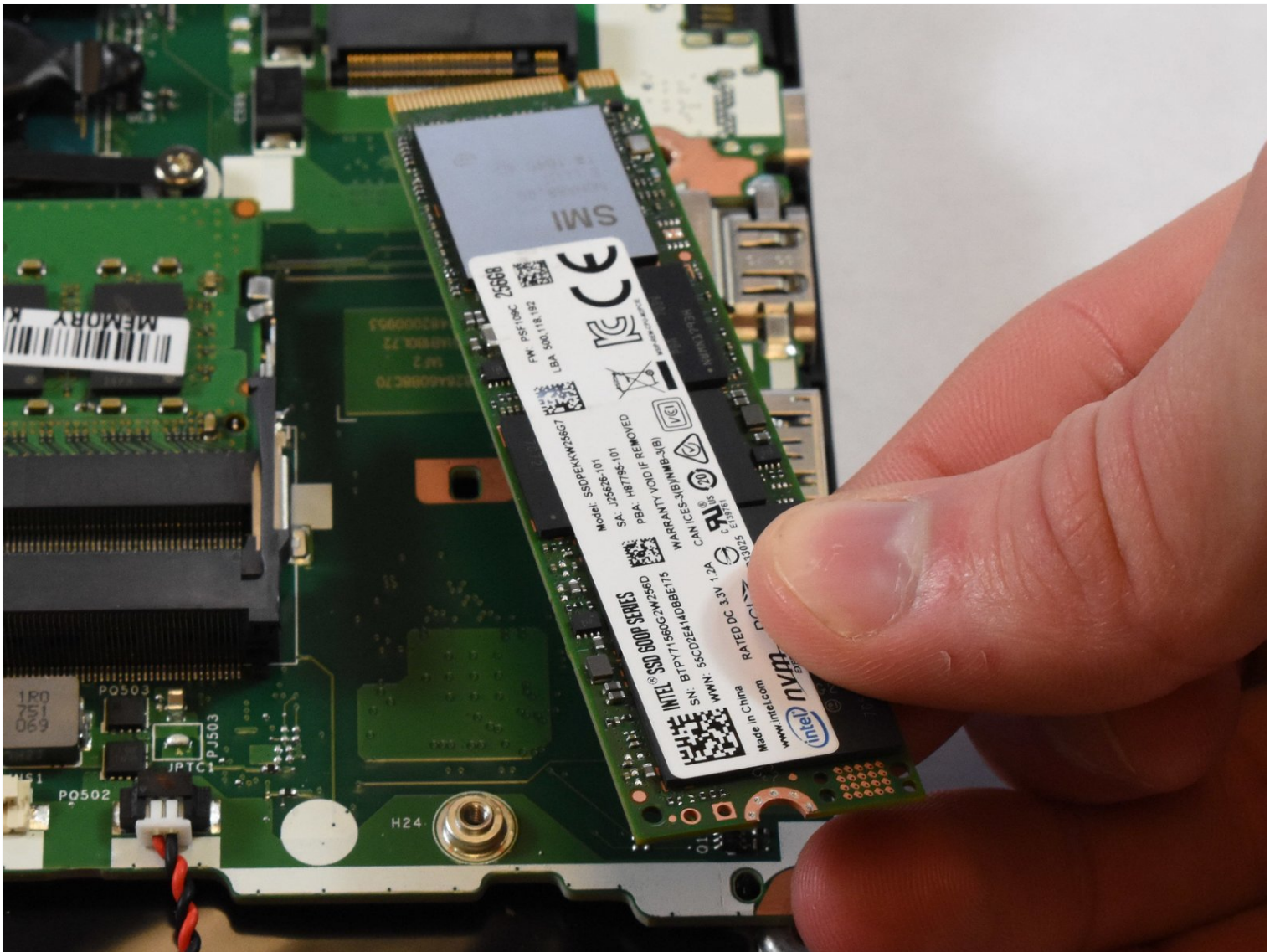




Acer Nitro 5 AN515-53-55G9 SSD Replacement

Use this guide to replace the SSD in the Acer...

Written By: Rheo Bruer



INTRODUCTION

Use this guide to replace the SSD in the Acer Nitro 5 Acer Nitro 5 AN515-53-55G9. This laptop comes with a SSD installed, this guide will show how to replace an new SSD.

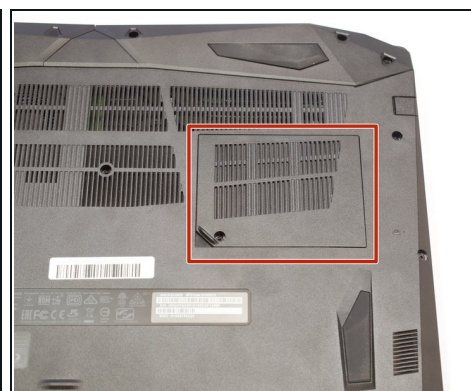
TOOLS:

Metal Spudger (1)
Spudger (1)
Phillips #0 Screwdriver (1)

PARTS:

Crucial P3 NVMe PCIe M.2 2280SS SSD (1)
Crucial P3 Plus NVMe PCIe M.2 2280SS SSD (1)
Crucial P5 Plus PCIe M.2 2280SS SSD (1)

Step 1 — Battery



 Make sure laptop is off and unplugged before beginning replacement.

- Flip the laptop upside down so that the bottom is facing up.
- Identify the RAM tray on the bottom of the laptop.

Step 2



- Use the Phillips #0 screwdriver to remove the 9mm screw in the bottom left corner of the RAM tray covering.
- Remove the RAM tray cover by prying up with a spudger.

Step 3



- Identify the Hard Drive tray to the left side of the laptop.
- Remove screw with a #0 Philips screwdriver.
- Lift up the Slot covering using a spunger.

Step 4



- Use the Phillips #0 screwdriver to remove the 9mm screws holding the back cover in place.
- Remove the screws from the hard drive and remove it from the device.

Step 5

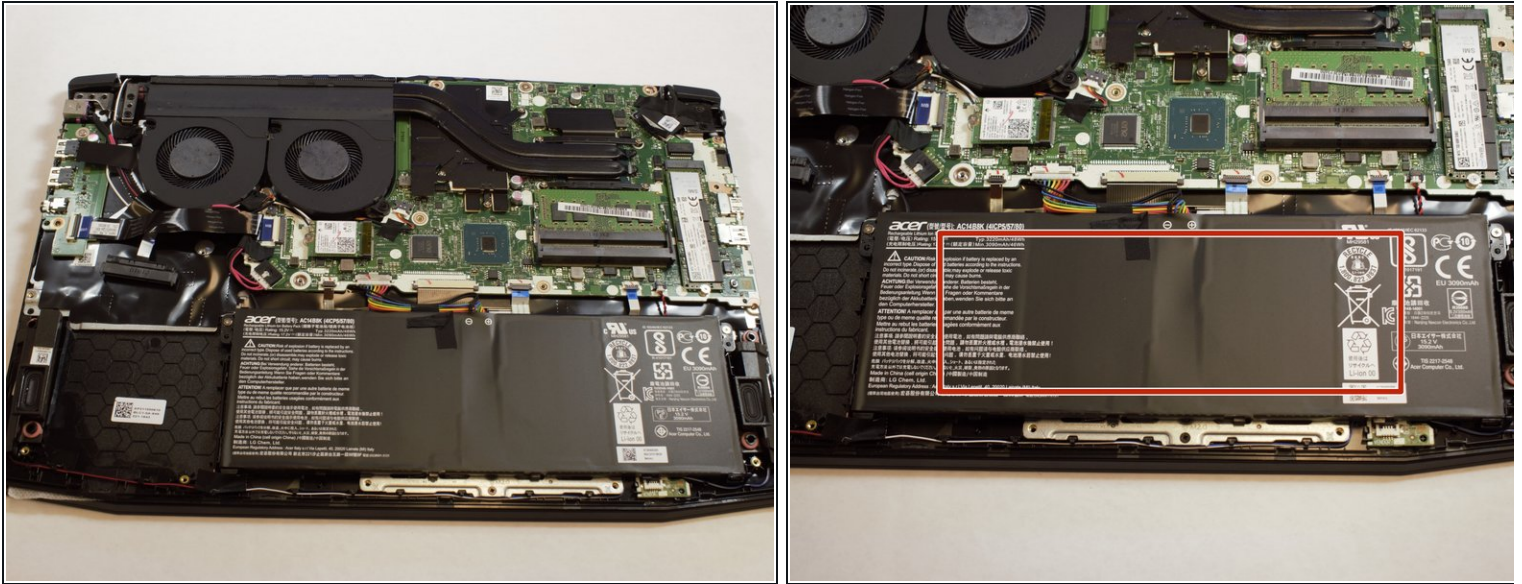


⚠ Be sure you removed the hard drive. when you open the back shell and hard drive is built in this may cause damage to cable and other components.

- Carefully remove the back shell from the device working your way around all the edges.

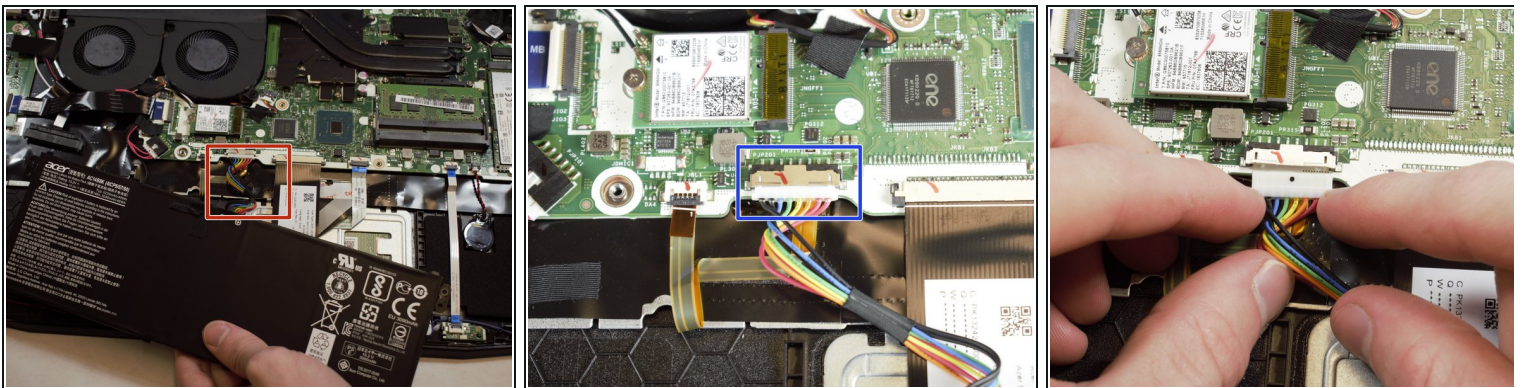
⚠ Do not forcefully try to separate the shell as you may cause harm to the shell.

Step 6



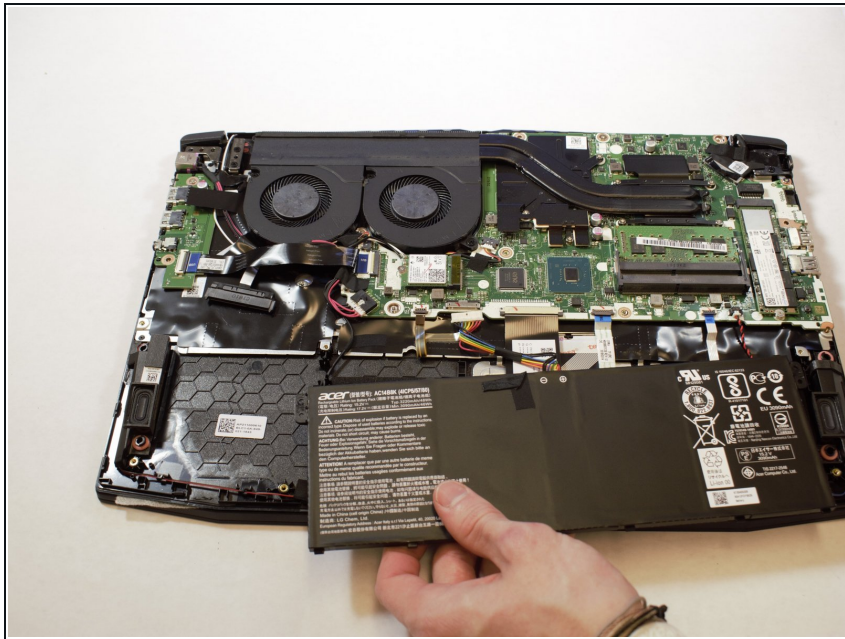
- Removing the back shell of the computer and it will look like this.
- The battery for the device is located at the bottom middle of the laptop at this orientation.

Step 7



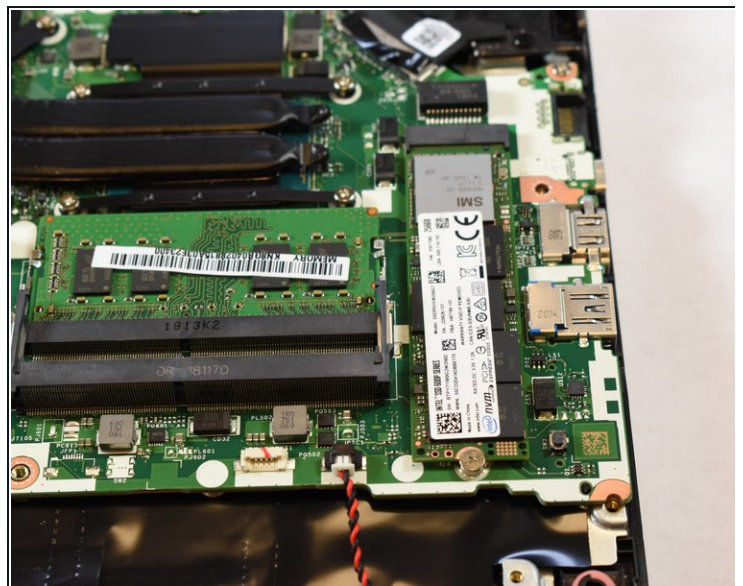
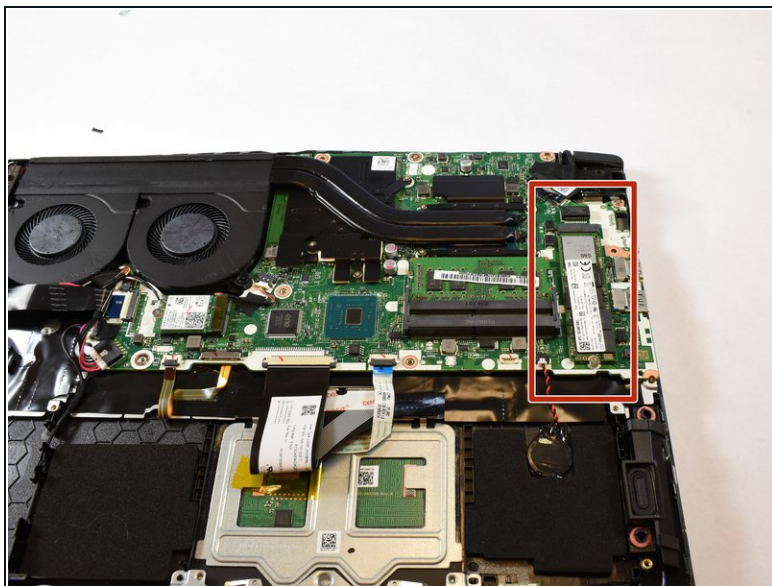
- Locate the connector of the battery to the motherboard.
- Using your fingers, slide out the connector.

Step 8



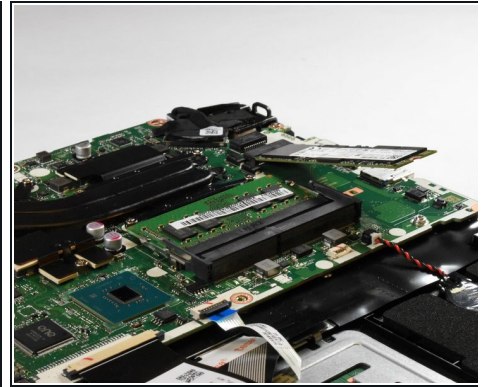
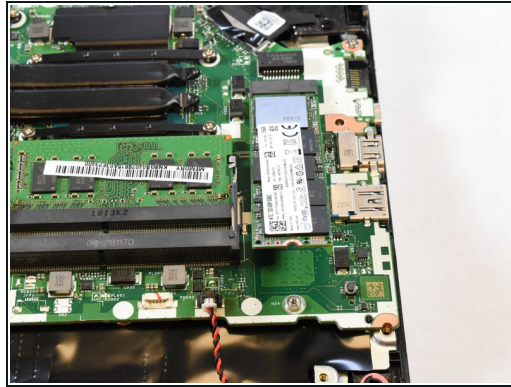
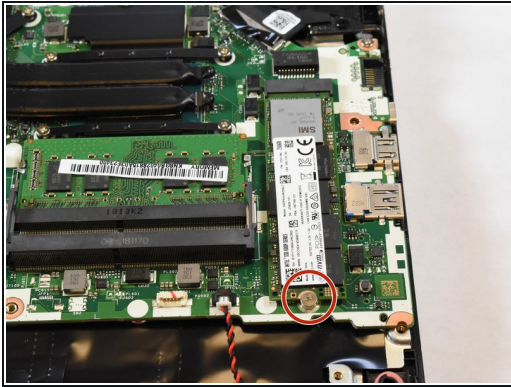
- Remove battery from device.

Step 9 — SSD



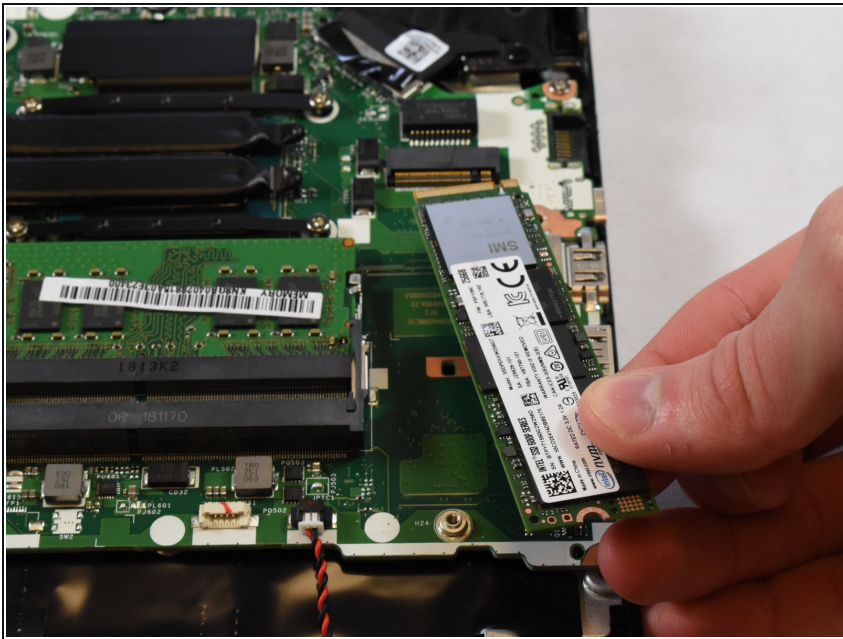
- Locate the SSD in the top right corner of the laptop.

Step 10



- Use the Phillips #0 screwdriver to remove the 3mm screw holding the SSD card in place.
- ⓘ The SSD will pop up at an angle when the screw is removed.

Step 11



- Slide the SSD out of its slot.

To reassemble your device, follow these instructions in reverse order.