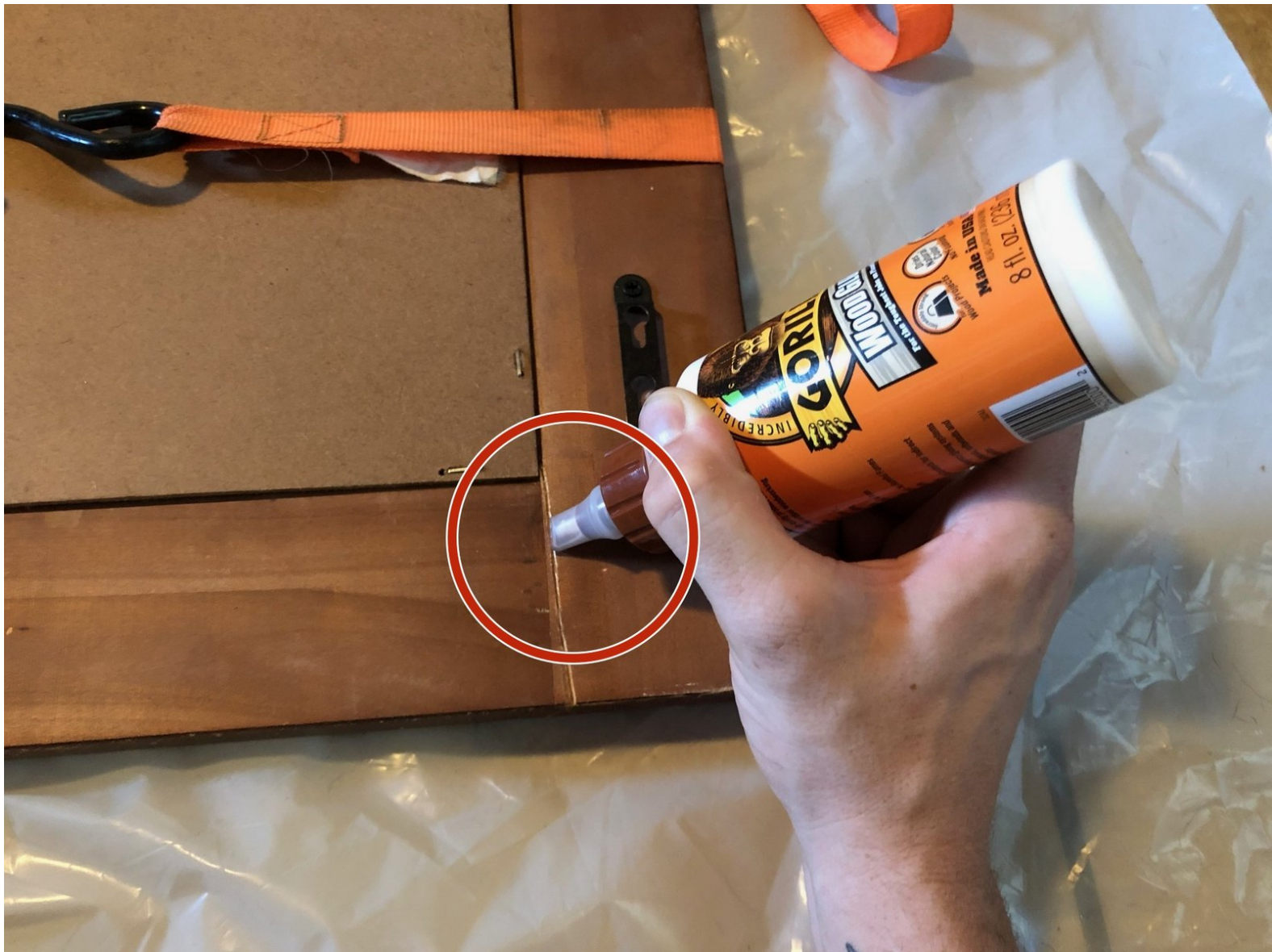




# How to Fix a Broken Wooden Frame

A quick easy guide to fixing a cracked wood framed mirror.

Written By: Tyler Turner



## INTRODUCTION

Wooden frames and mirrors are often broken then tossed into the garbage where they slowly deteriorate over time. This has negative effects on the globe. With this guide, you can repair your cracked wooden framed mirror with wood glue and ratchet straps. Instructions for securing it to the wall are also included, an anchoring kit can be purchased from your local hardware store.



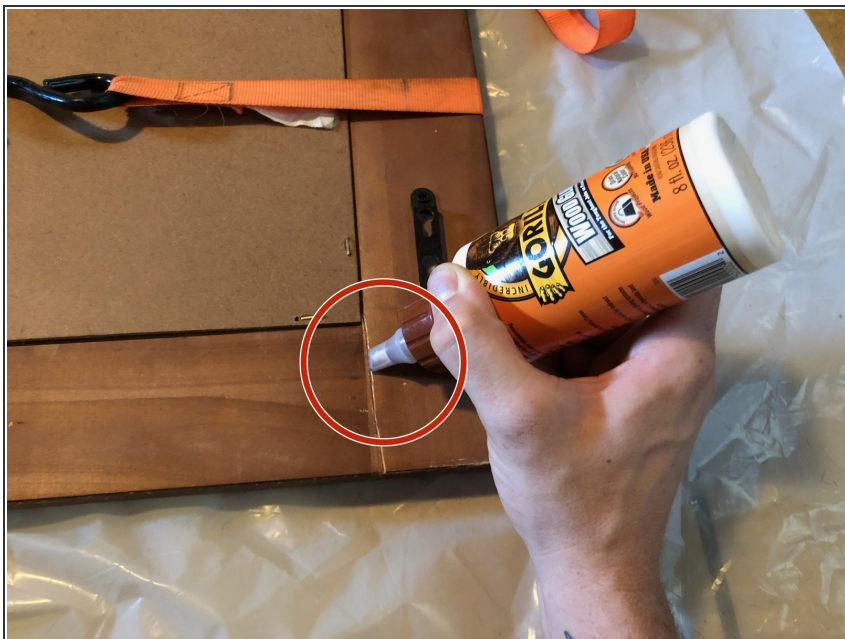
### TOOLS:

- [1" Plastic Putty Knife](#) (1)
- [Wood Glue](#) (1)  
Gorilla wood glue
- [Ratchet straps](#) (2)
- [Plastic sheeting](#) (1)
- [Mirror anchoring kit](#) (1)
- [Wire cutters/side cutters](#) (1)
- [Measuring Tape](#) (1)
- [Power Drill](#) (1)

*Needed: Philip's head attachment and 1/4" drill bit (approx.)*

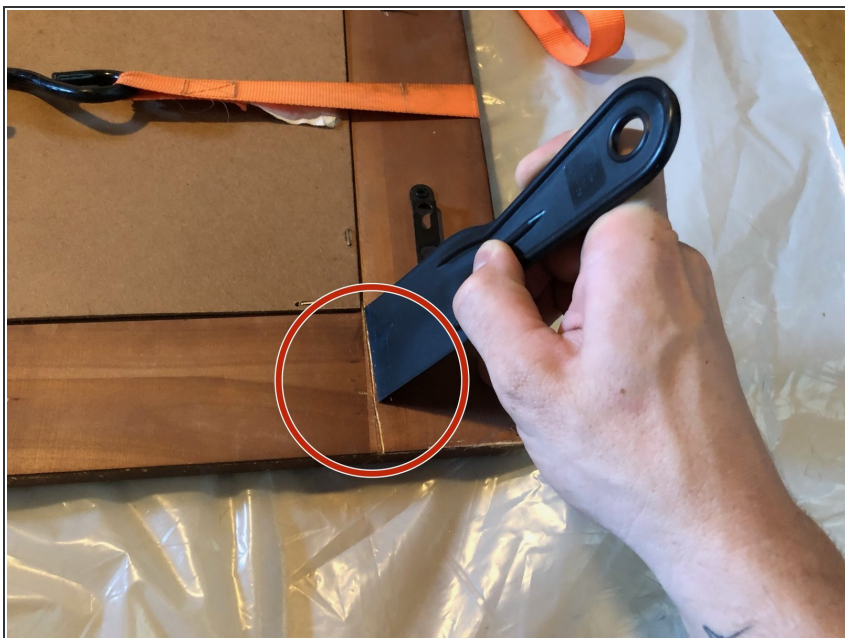
- [Hammer](#) (1)

## Step 1 — How to Fix a Broken Wooden Frame



- Place the plastic sheet on the ground. Place ratchet straps on the sheeting. Lay the frame face down on top of the plastic sheeting. Dust off the area that is damaged.
- Add glue to the crack.

## Step 2



- Push the glue in as far as you can.
- ① Reapply if needed.

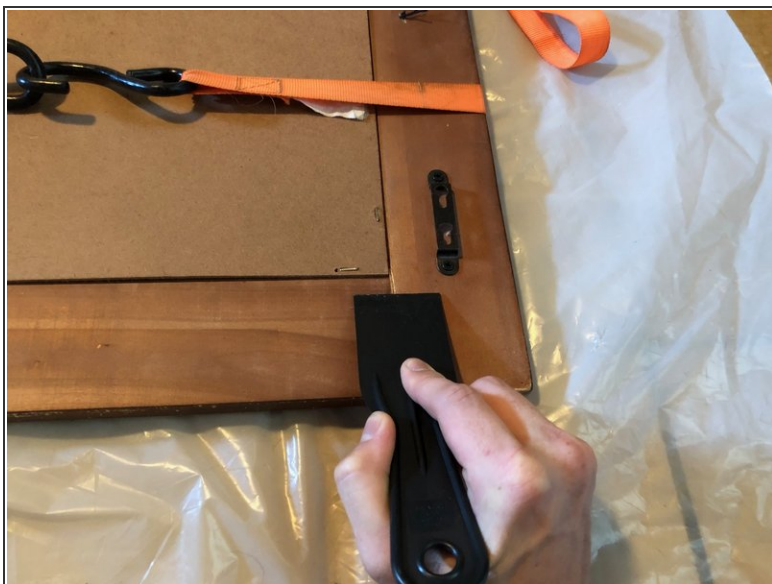


## Step 3



- Tighten the ratchet straps.

## Step 4



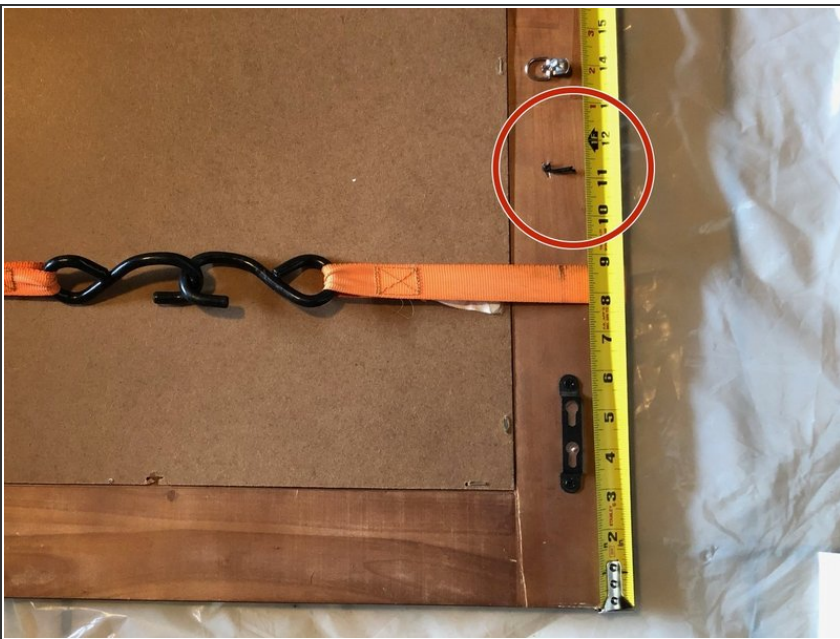
- Smooth out the glue.

## Step 5



- Wipe off any excess glue.
- ⓘ Allow to dry for 24 hours before undoing the ratchet straps.

## Step 6



- Measure 14 inches down from the top of the mirror to place the screw and loop found in the anchor kit.

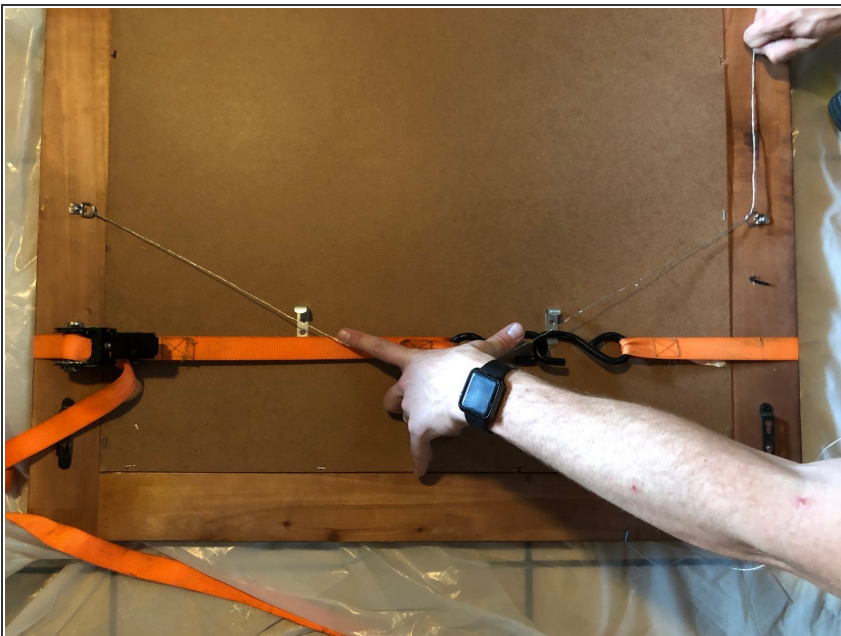


## Step 7



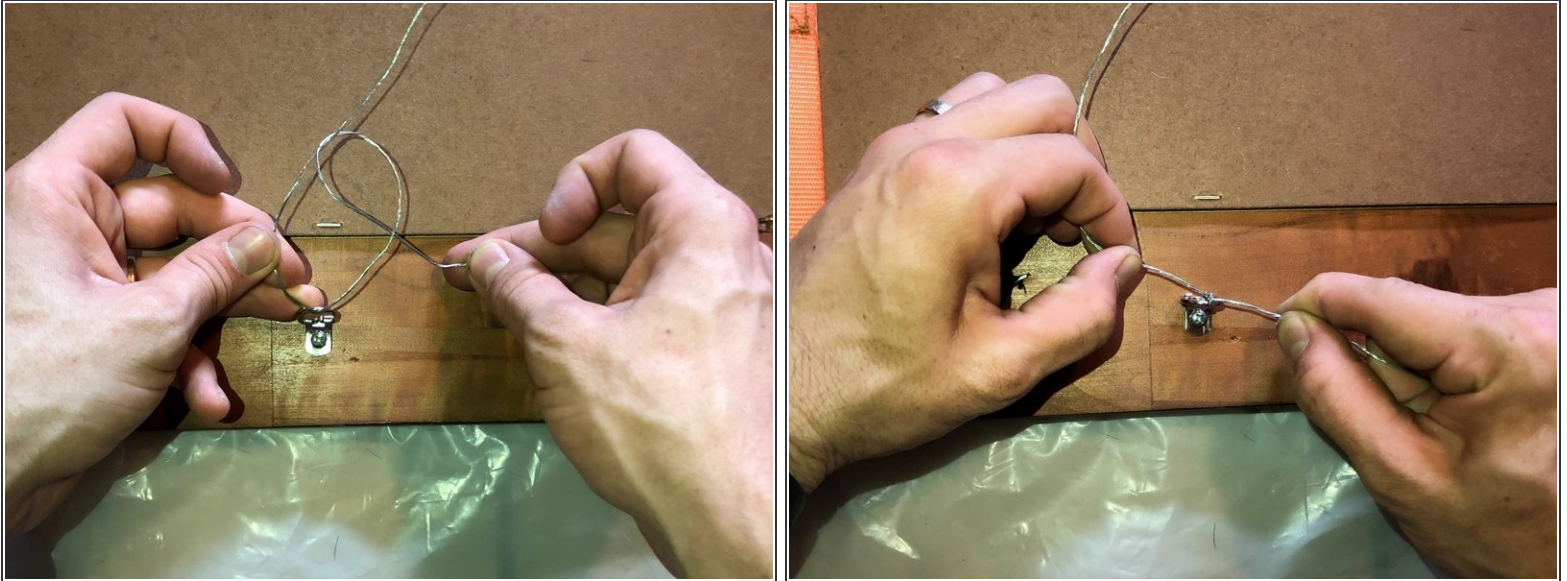
- Use a power drill to screw in the screw and loop combo on both sides of the frame.

## Step 8



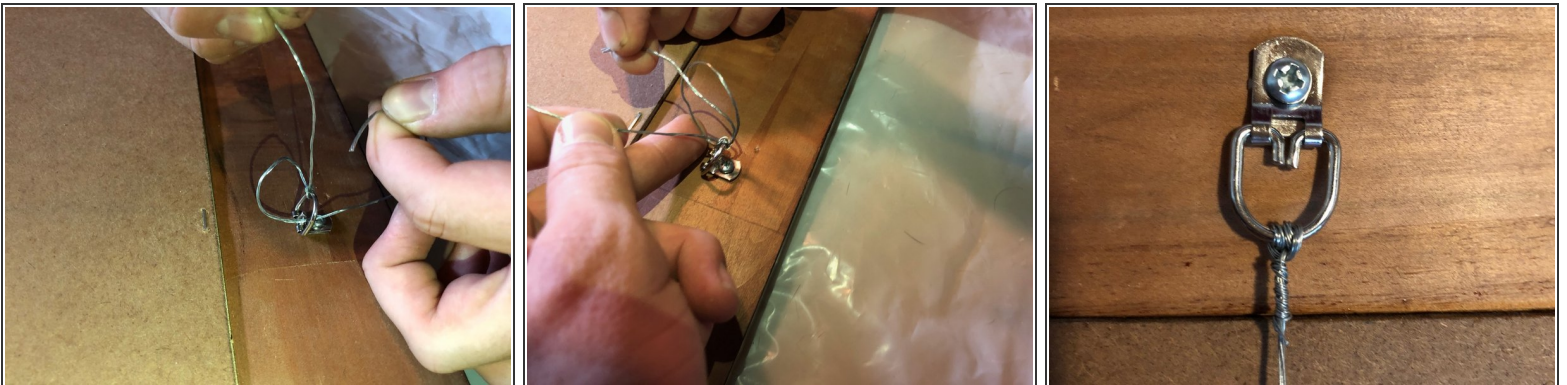
- Once both of the loops have been tightly screwed in, get an approximation of how much wire you will be using.
- Put the wire through the loop with about 6" excess.
- Place the anchors for the wall a few inches above the screws and slightly centered.
- Pull taut on the wire where the anchors are and put the opposite end of the wire through the loop.

## Step 9



- With the wire through the loop, tie like a regular knot and give it a good tug.

## Step 10



- Feed the short end through the loop on the left side of the interior wire and pull tight.
- Feed the short end through the loop but this time on the right side of the interior wire and pull tight. You are creating a slipknot.
- Once the slipknot is tight, spin the excess wire around the interior wire like a coil for 1/2". Remove any excess with wire cutters.



## Step 11



- Measure 8" down to determine where the anchors will be placed on the wall.
- Remove the ratchet straps.

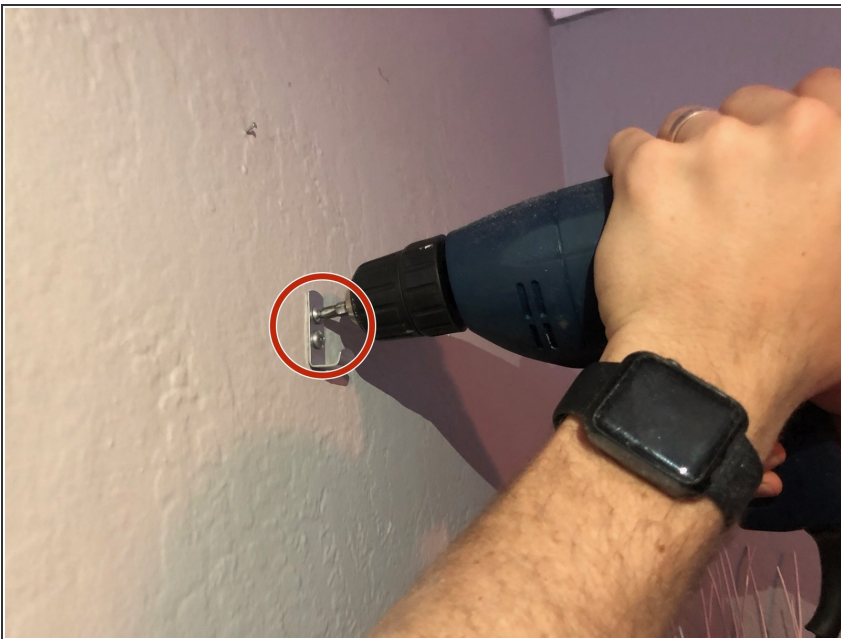


## Step 12



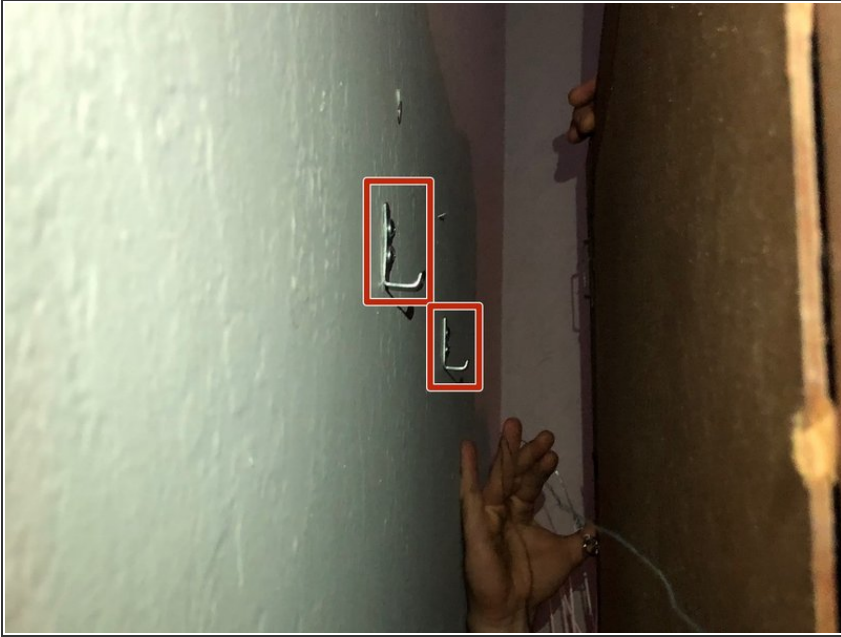
- Drill one hole in the wall, and about 1/2" underneath that hole, drill another hole. It should be the same size and distance as the metal anchors.

## Step 13



- Insert the plastic anchors into each hole using a hammer.
- Place the screw through the first hole in the metal anchor. Screw in the screw using the power drill.
- Repeat for all four holes. Each hole should contain a plastic anchor and a screw.

## Step 14



- Align the mirror to the center of the metal anchor and hook the wire on.

To unhook the mirror from the wall, follow these steps in reverse.