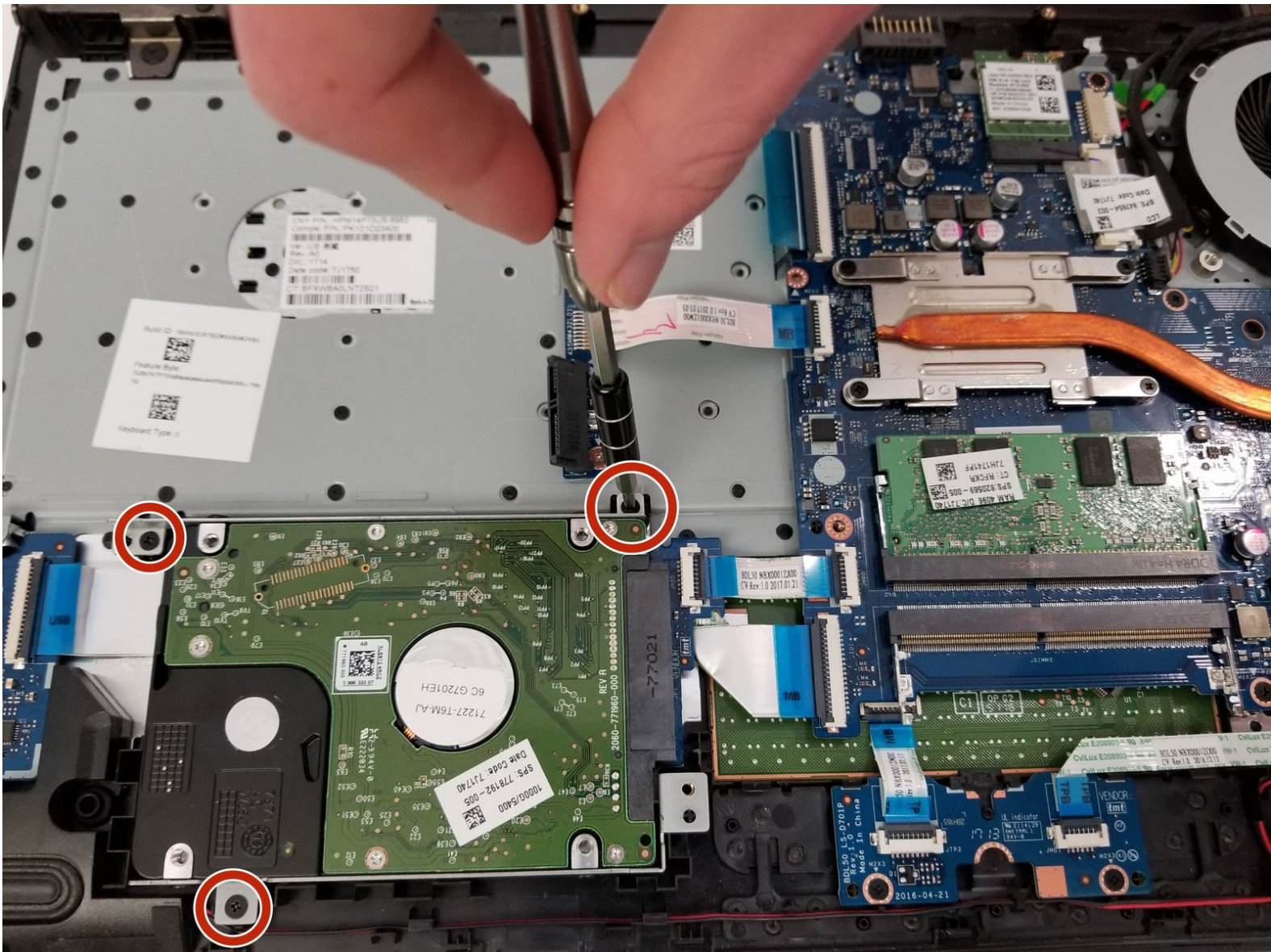




# HP 15-ay052nr Hard Disk Drive Replacement

How to replace an HP 15-ay052nr hard disk drive.

Written By: Gabriel Zeller



## INTRODUCTION

This leads the reader through removing the hard drive for replacement. The hard drive may need replacing if it is too slow or makes odd noises while running. If you are not encountering these specific issues with your computer, check the [HP 15-ay052nr troubleshooting page](#) to direct yourself towards the guide most beneficial towards your issue.



### TOOLS:

- [JIS #0 Screwdriver](#) (1)
- [iFixit Opening Tools](#) (1)



### PARTS:

- [HP Inc. HDD 1TB 5400RPM SATA RAW H, 731999-005](#) (1)

## Step 1 — Battery



**⚠** To protect the device and yourself, make sure your device is completely powered down before disassembling. Disconnect all external devices before starting any tear down process.

- Turn the device and lay it upside-down on a flat surface so the base of the computer is facing upwards.

## Step 2



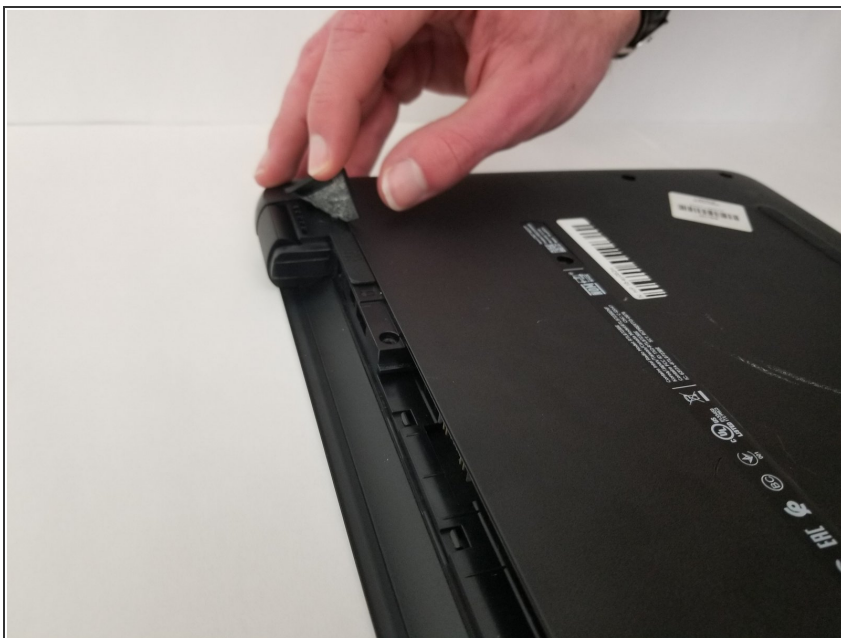
- Identify the two (2) sliding lock mechanisms on either side of the battery and slide them towards the center.
- i** The sliders are located at the back of the device on the side where the display hinges are.
- i** The slider closest to the optical drive (CD reader) clicks open but the opposite slider has a spring.

## Step 3



- Pull the battery slightly up and out to remove.
- ⓘ If the battery doesn't pop out, the sliders weren't pushed in far enough. Push the sliders towards the center until the battery pops out.

## Step 4 — Bottom Cover



- Remove the rubber feet on the bottom of the device to access all the screws.
- ⓘ There are two rubber feet, one on each side of the battery compartment.

## Step 5



- Unscrew the twelve 9 mm JIS #0 screws on the back of the device.
- Gently remove the optical drive (CD reader) to more easily separate the base.

## Step 6



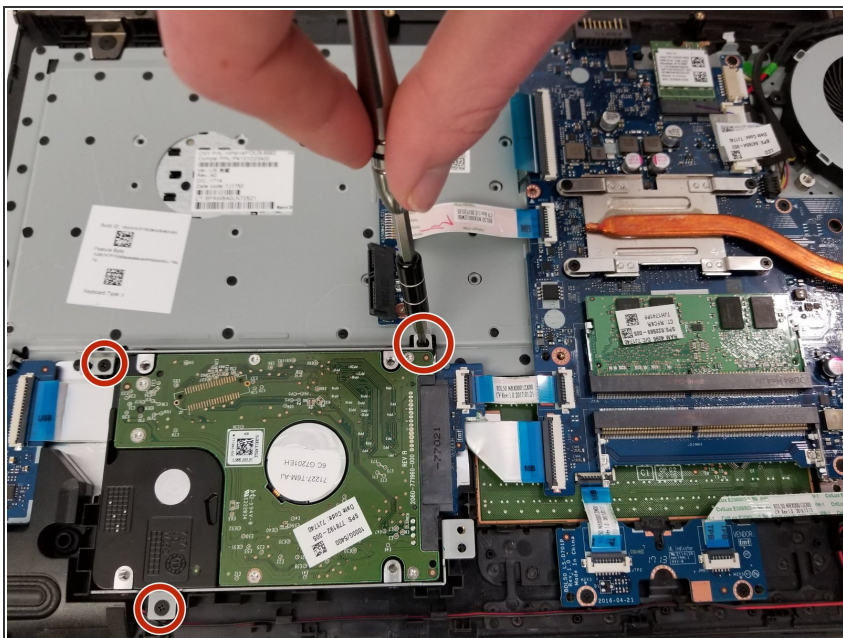
- Unclip the keyboard surface from the base using an iFixit opening tool around the entire border.

## Step 7



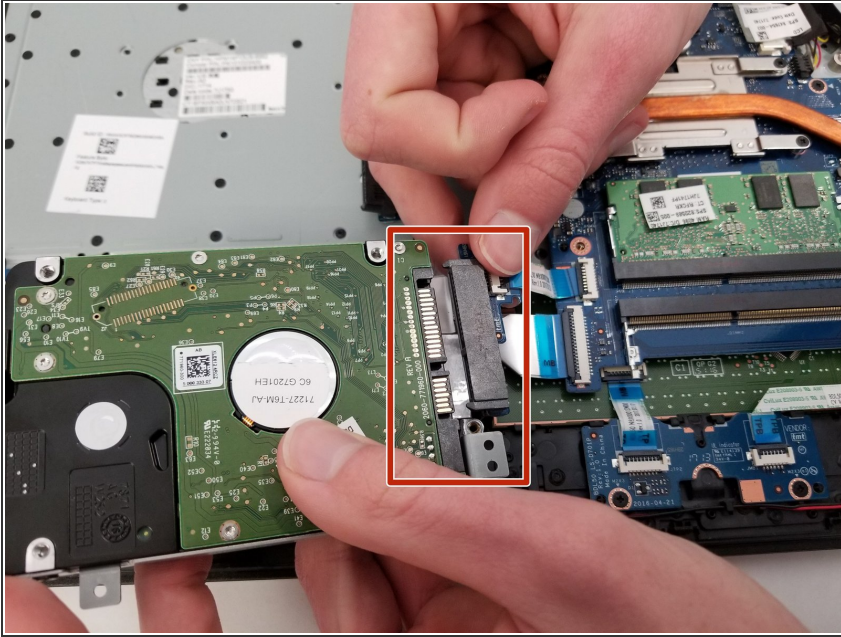
- Separate the base of the computer from the component assembly.
- ⓘ The optical drive can be placed in the base where it corresponds to prevent misplacing it.

## Step 8 — Hard Disk Drive



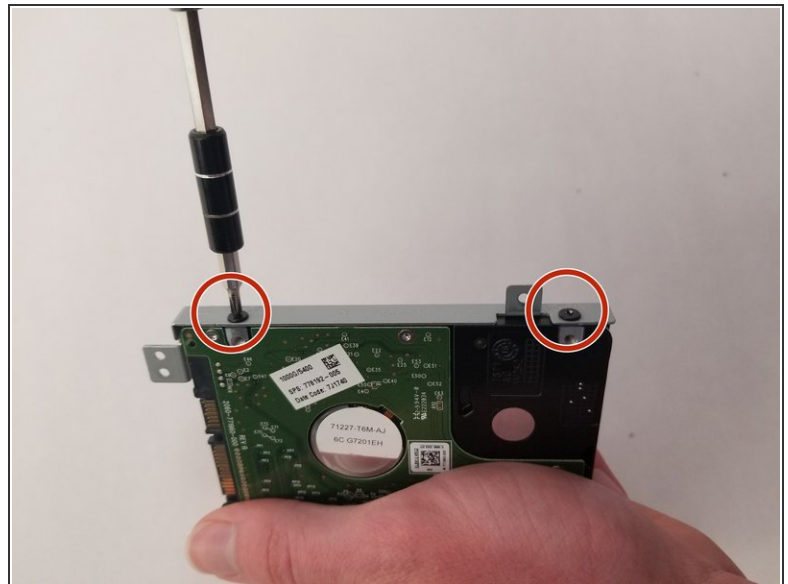
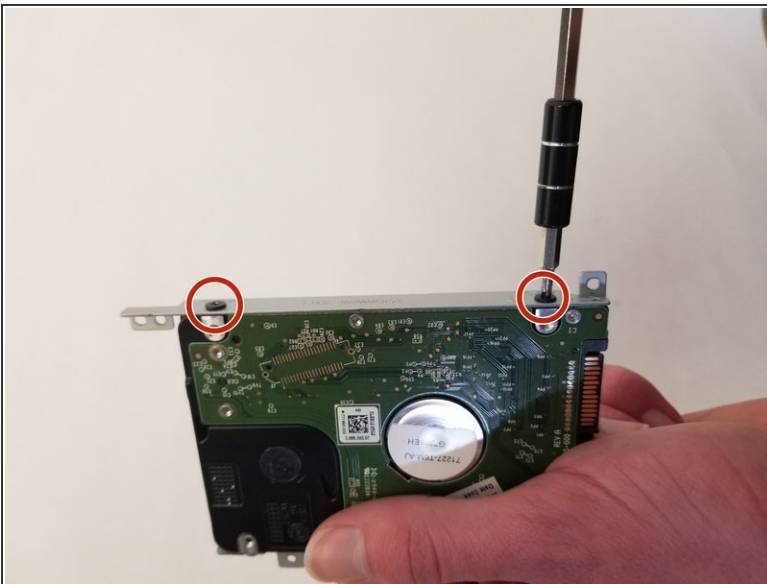
- Remove the three 3 mm screws that mount the hard drive to the computer.

## Step 9



- Remove the connector from the hard drive by pulling it away from the drive.

## Step 10



- Lift the hard drive from the computer and remove the two 3-mm screws that connect each mounting bracket to the hard drive.

To reassemble your device, follow these instructions in reverse order.

This document was generated on 2020-11-27 07:56:39 PM (MST).

