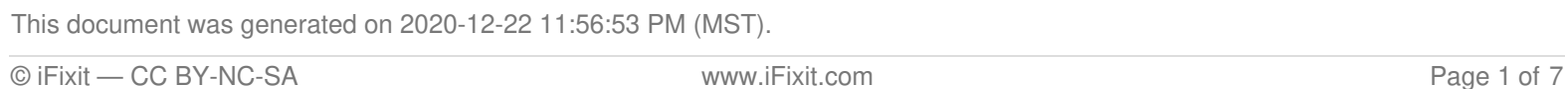




Written By: Doug



INTRODUCTION

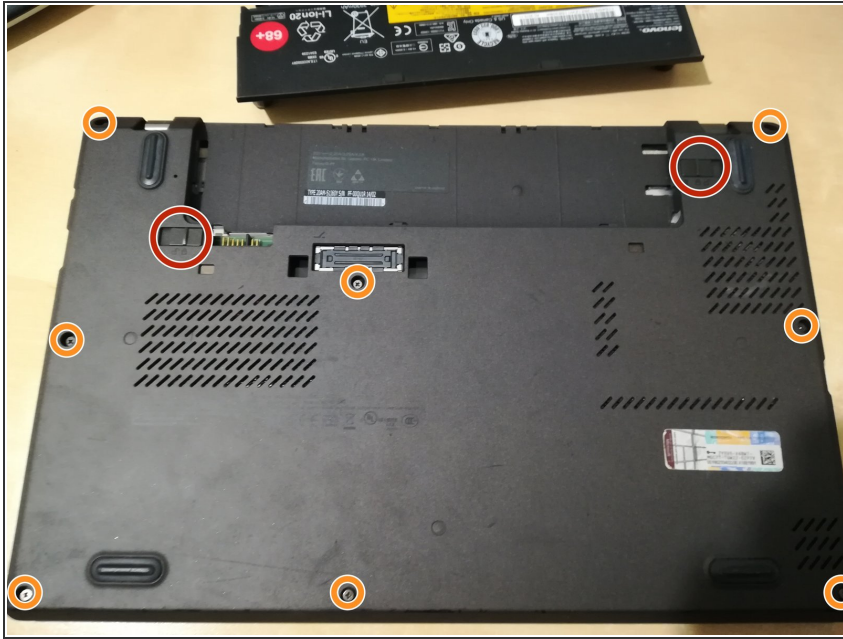
Prepare the internal components of a X240 for replacement



TOOLS:

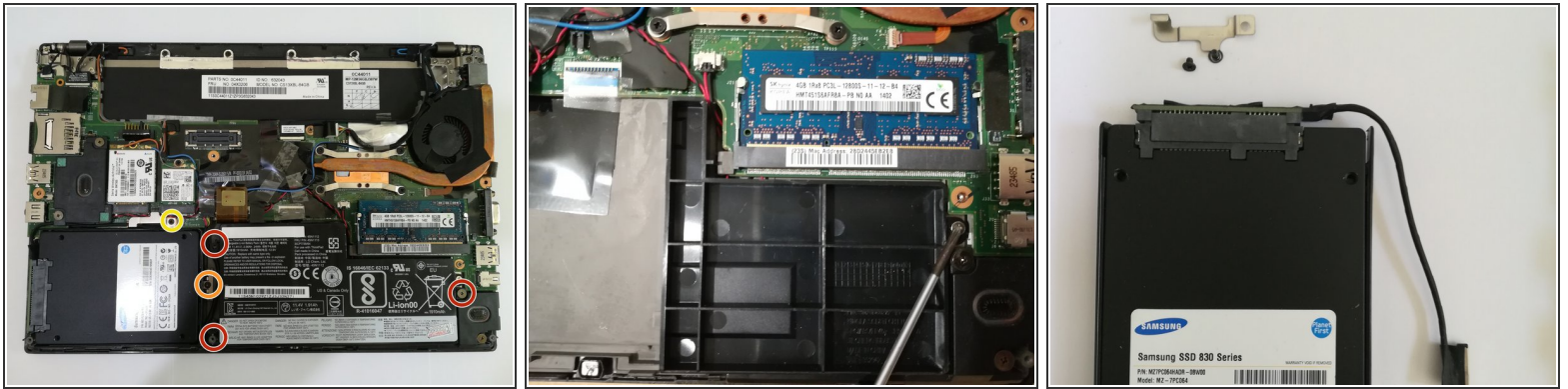
- [Phillips #0 Screwdriver](#) (1)
 - [iFixit Opening Tools](#) (1)
 - [Tweezers](#) (1)
-

Step 1 — Remove back cover



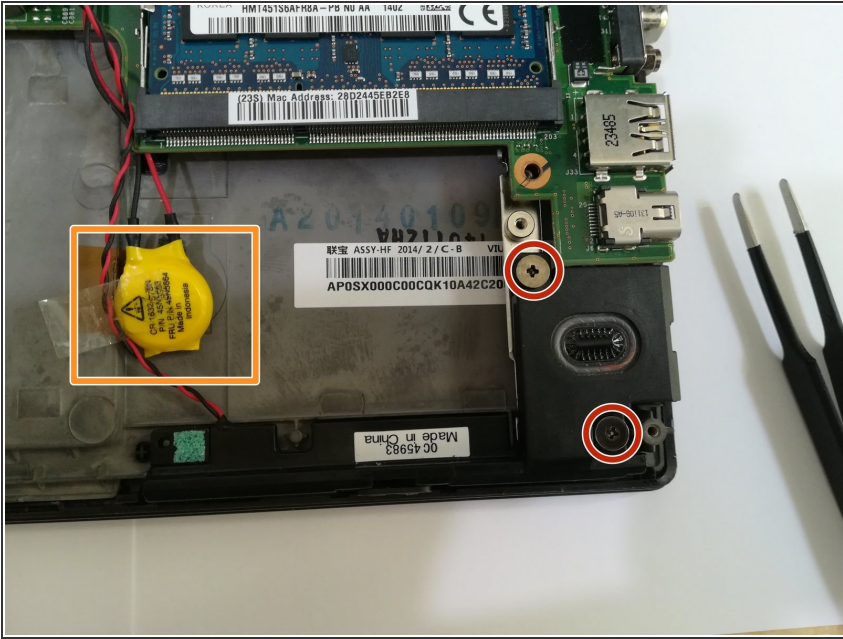
- Ensure that any internal batteries are powered down in the BIOS.
- Remove external battery using the two finger clips on the underside.
- Loosen all eight (8) screws on the underside of the laptop. These screws have retention clips so should not be removed completely from the back plate.
- Remove back plate of laptop and set aside.

Step 2 — Remove internal battery and HDD



- Identify and remove the internal battery.
 - The internal battery is held in by up to three screws, circled in red in the photo.
 - If there is no internal battery then remove the spacer shown in the second photo. This is held in by one screw.
- Remove the internal HDD or SSD.
 - This is held in a carrier tray which is attached to the frame by a single screw circled in orange.
 - The data connection to the motherboard has a silver shield which is held in place by a single screw, circled in yellow in the photo.
- Set the HDD and internal battery aside.

Step 3 — Remove speakers and BIOS battery



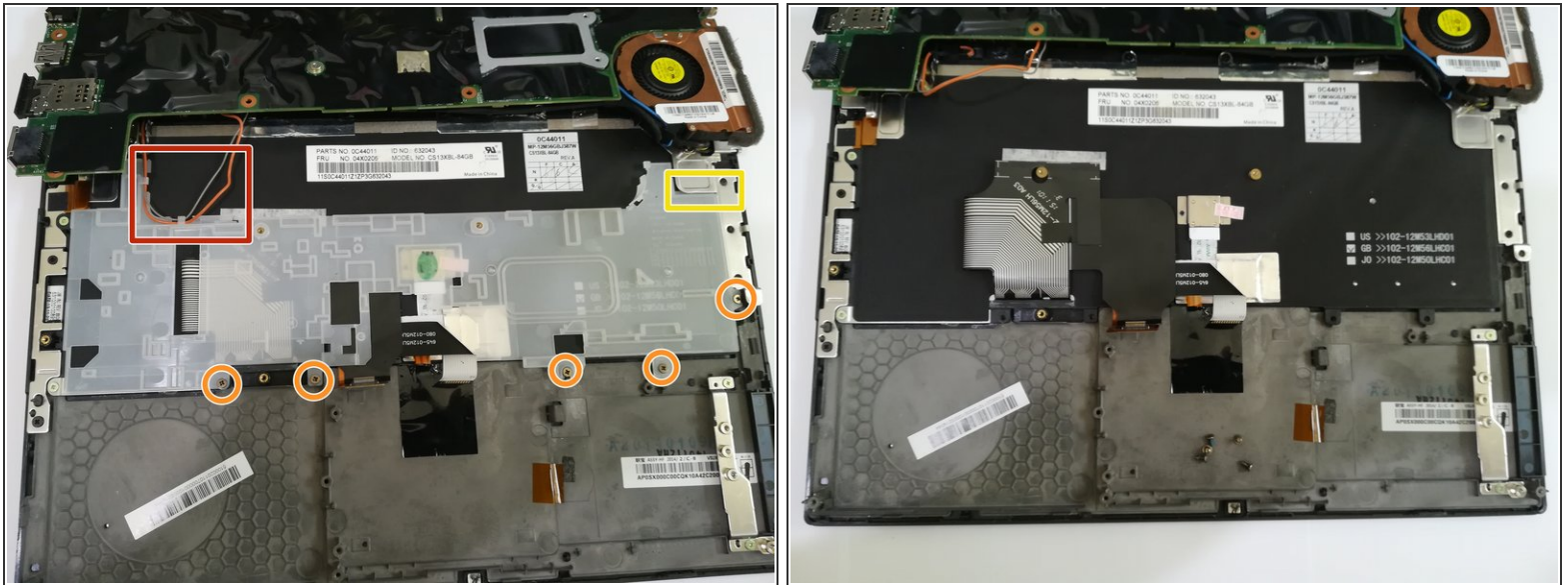
- Remove right speaker by taking out the screws marked in red.
- Remove tape holding BIOS battery marked in orange.

Step 4 — Remove motherboard



- Remove connectors
 - Start with the large connector in the middle at the bottom of the motherboard. Here it is marked in red.
 - Then ease up the two connectors, one underneath the large connector just removed. These are done by raising the black tab on the connector to vertical then pulling gently on the ribbon cable. These are marked in orange in the photo.
 - Also lift the connector on the upper left of the keyboard, marked in orange. Just unplug it by lifting it up with your nails or with a small screw driver
- Ease the antenna cables for the wifi and 3G out of their black holder, and pull the holder off the motherboard towards the top side of the laptop. This is marked in yellow.
- Underneath you will find one screw, which you should remove.
- Another two motherboard screws are marked in green, these should be removed.
- Remove the motherboard by easing it to the right from under a tab marked in blue near the BIOS battery, and gently placing it back towards the top of the laptop.

Step 5 — Keyboard tray



- Remove keyboard tray, starting by moving the antenna wires out of their clips, shown in red on the photo.
- Then remove the 5 screws holding the keyboard tray to the frame. These are marked in orange.
- Finally ease the tray away by pulling it downwards and from under the top tab, marked in yellow.
- The keyboard and touchpad connectors should be visible.

To reassemble your device, follow these instructions in reverse order.