



# Bosch mfq 1901, suddenly does not start fix

If the device suddenly does not react when turning on, this guide might help. The speed regulator plastic was old and brittle and broke, some tape fixed it!

Written By: Endorph





## TOOLS:

- [flat head philips screw driver](#) (1)



## PARTS:

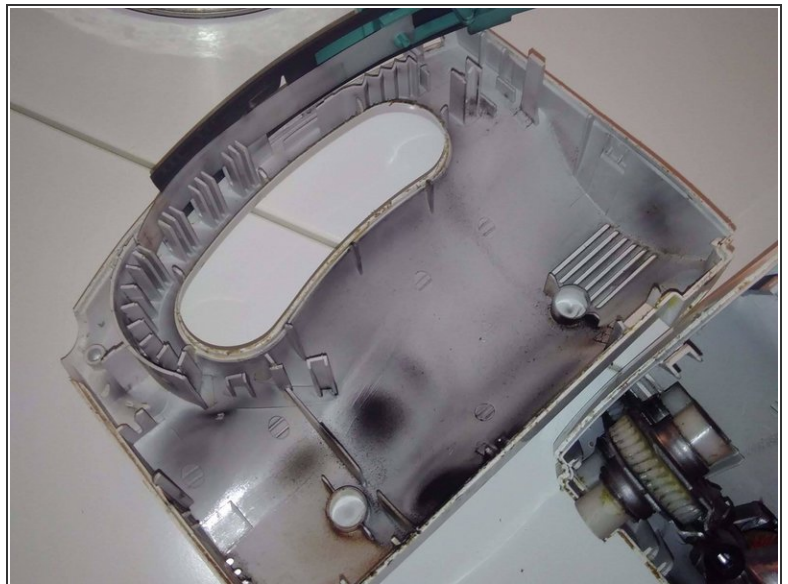
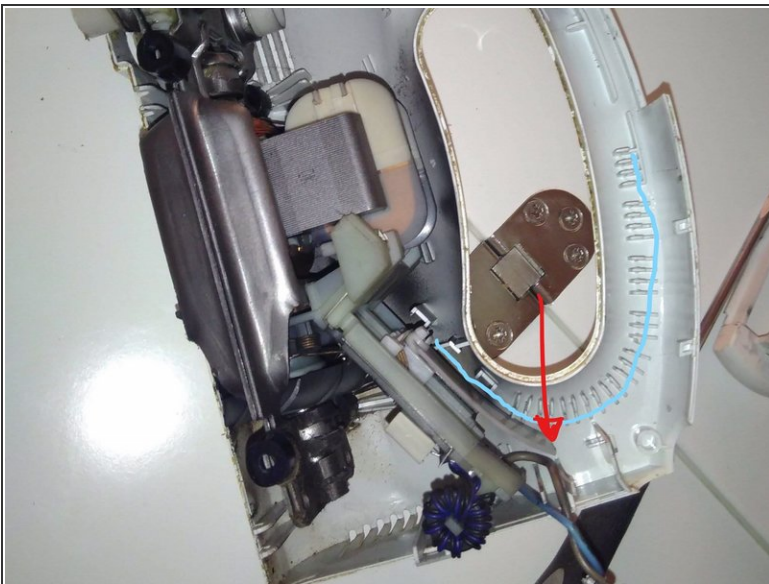
- [Kapton Tape](#) (1)

## Step 1 — Dissassembly



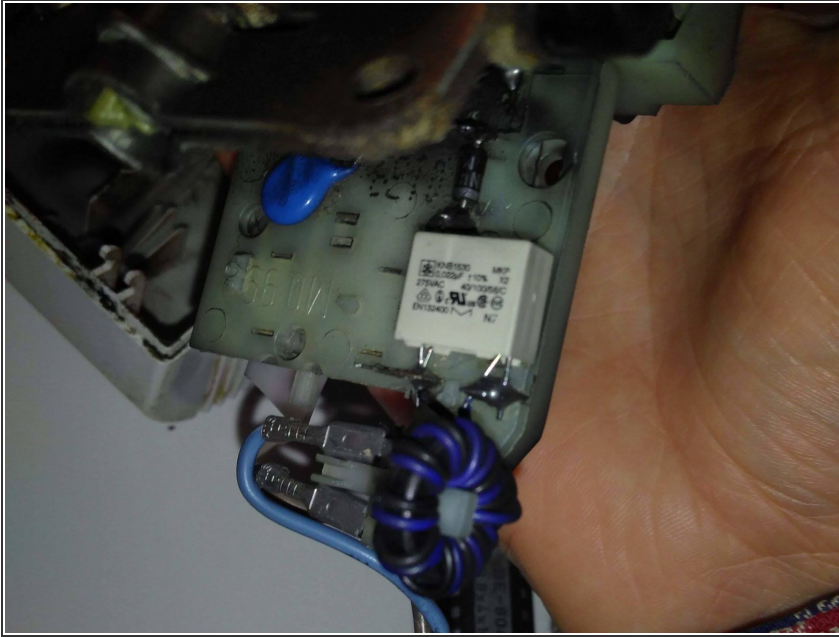
- Using a flat head screwdriver carefully push the gray bar backwards.
- Open it like a suitcase case as there where hinges aligning with the flat underside.
- It should pop up fairly easy

## Step 2 — Locate the broken plastic piece



- The blue line corresponds to how the plastic should align
- The red arrow shows where it has broken.
- Picture 2 shows the remainder of the plastic speed regulator


### Step 3 — (Bonus) observe the electronics



- There is a diode(black), a safety capacitor(white), another capacitor(blue) and a coil
- The white capacitor is an KNB1530 MKP-X2, 0,022uF, rated for 275VAC

### Step 4 — Merge the two pieces together



- Use kapton tape or some other, thin heat resistant, low friction and electrically isolating tape.
- By merging the two broken pieces and putting one piece of tape(I used 8 cm to make sure other parts will hold) on each side of the broken area.
- Apologies of no picture of the result.
-  You can also replace the part with a new one: Part# Bosch 640243 from <https://www.bosch-home.com/de/supportdet...>



## Step 5 — Reassembly



- Make sure the spherical cable holder is in place (obviously not like in the picture)
- Use the same methodology as for disassembly, let all parts stay in the left shell-piece
- Align the two shell-parts with an 90-degree at the flat bottom as there where an hinge there
- Do not use much force, this procedure should be smooth, so be patient
- Lastly, push the gray speed-dial area back with a small flat screwdriver to let the last gap disappear

## Step 6 — Testdrive!



- I did put it on a heat resistant non flammable surface, set the speed controller to zero.
- Plug it out
- Repeat the first step but with the speed controller set to something else
- Mine spins better than ever! (Or maybe I was just excited)