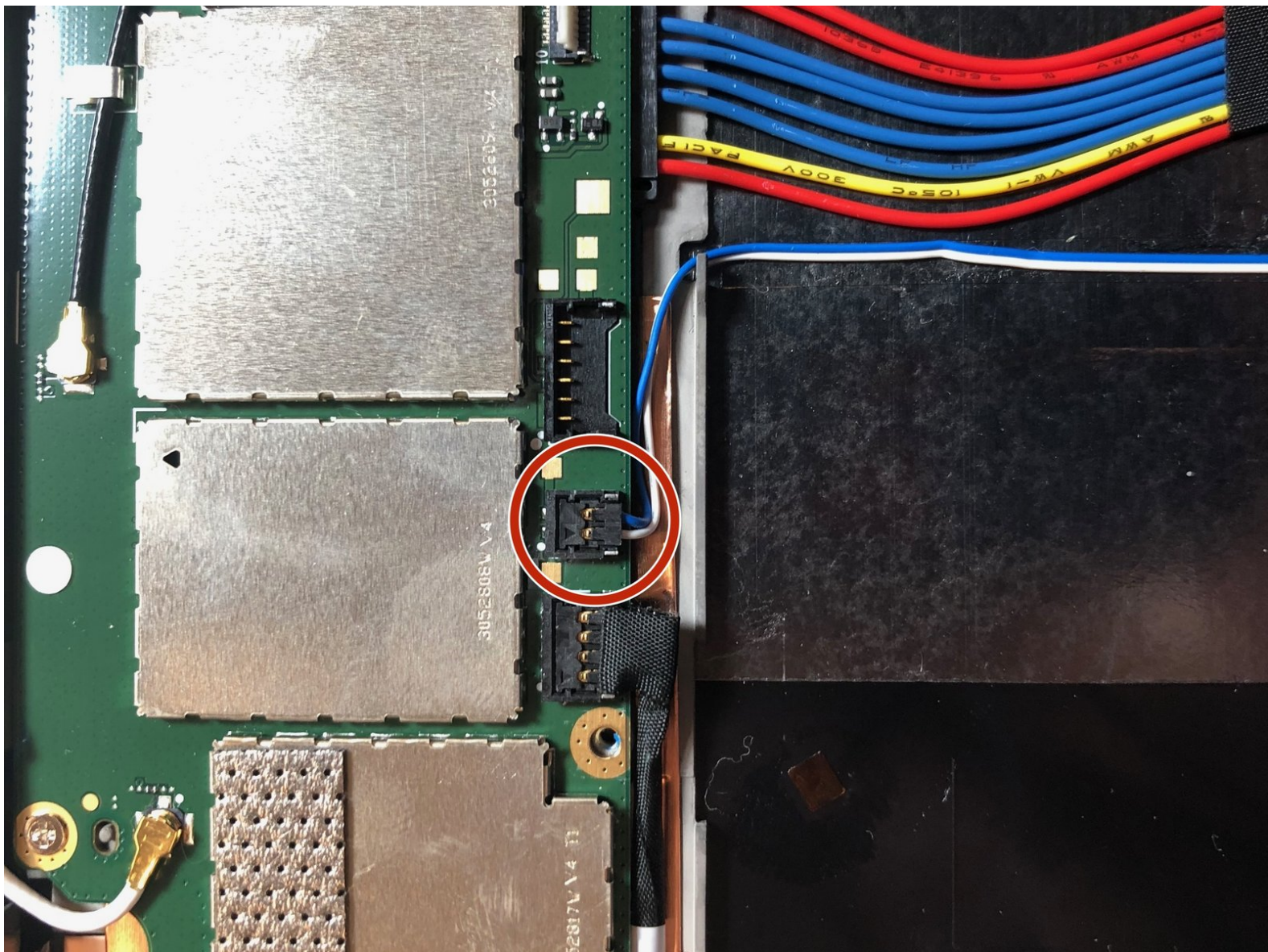




# Nokia Lumia 2520 Speaker Replacement

The Nokia Lumia 2520 has two speakers left and right. Which are receiving power from the logic board.

Written By: Degan Berhe





## TOOLS:

- [iFixit Pro Tech Toolkit](#) (1)
- [Heat Pad](#) (1)
- [iFixit Opening Picks set of 6](#) (1)
- [Spudger](#) (1)

## Step 1 — Display Assembly

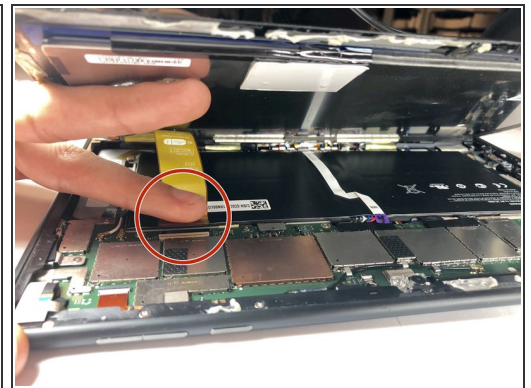


- Apply heat pad to each side of the device.

⚠ When using any heat pad please use some form of padded gloves so you don't burn your fingers.

ⓘ Microwave the pad for 30 seconds so an ample amount of heat is given on all four sides. Do not microwave more than once every two minutes.

## Step 2



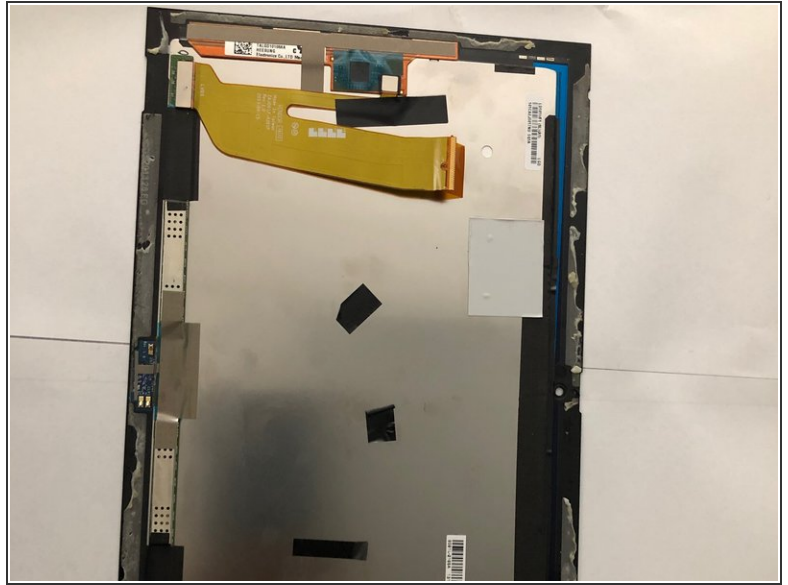
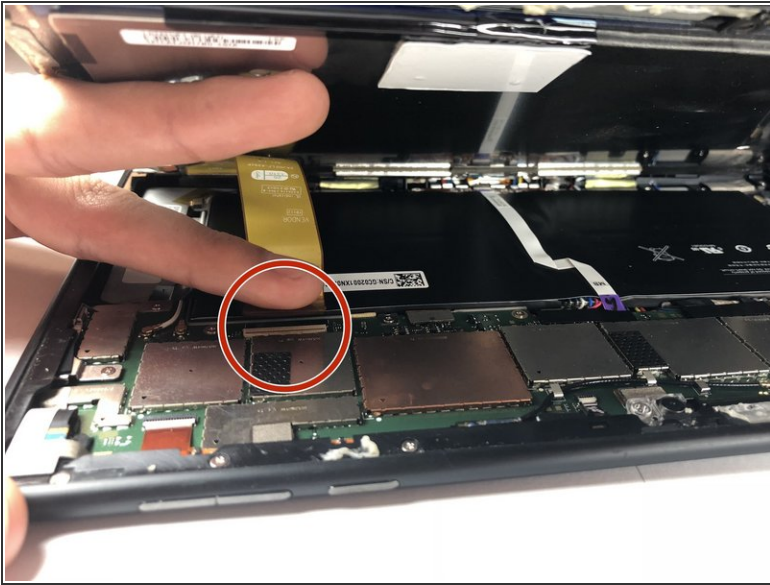
- Insert the pick between the glass to separate the glass from the device. You can also use the suction cups to help lift the glass.

⚠ When pulling the screen off the chassis, be careful not to cut the ribbon cable that connects the screen to the logic board.

★ Take your time to pry open the screen from the chassis as you can easily break the screen or crack it.

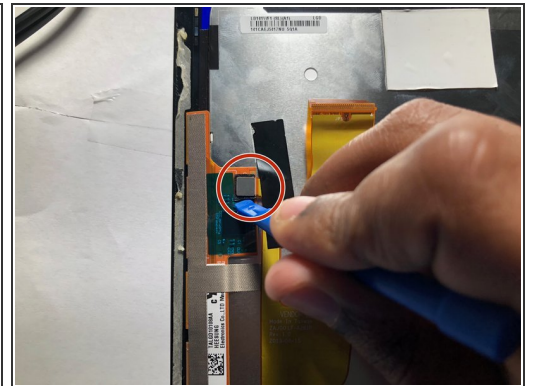
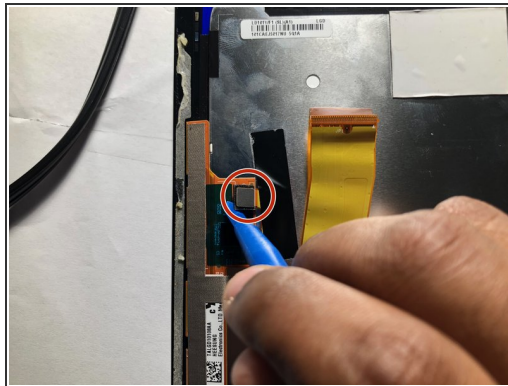
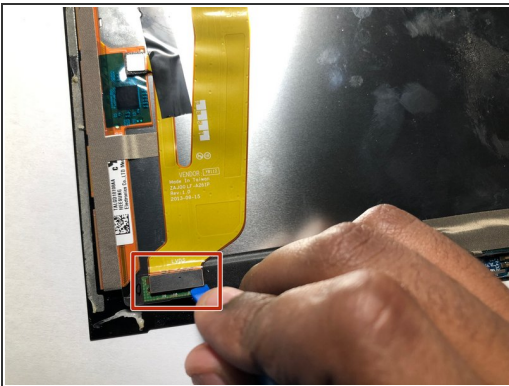


## Step 3



- Pull the ribbon cable out from the connection port on the board.
- Move on the step 4 to remove the ribbon connection from the screen.

## Step 4



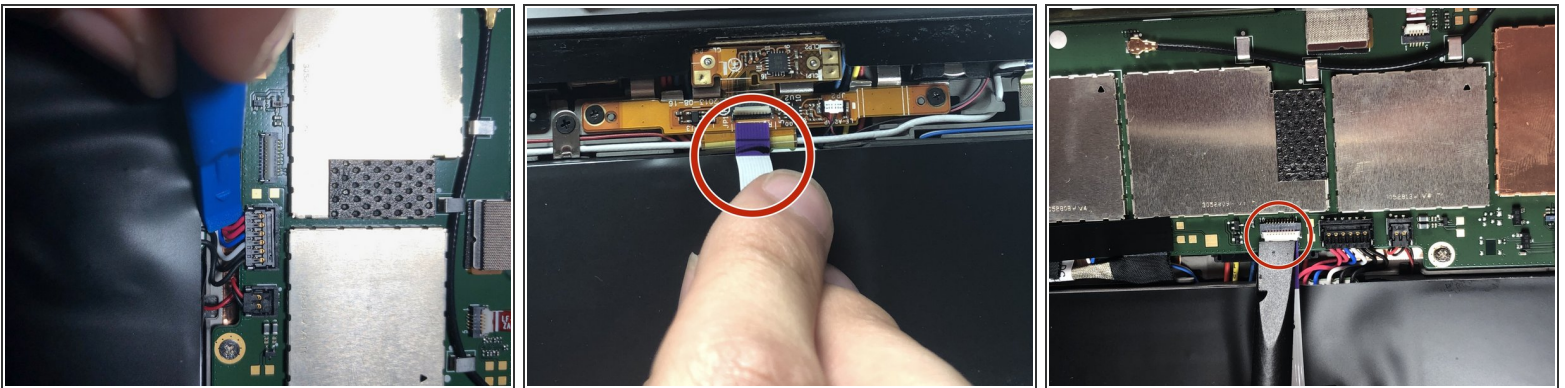
- Use the plastic pry tool to remove both of the connections.

## Step 5



- Set aside the screen and the display assembly for repair.

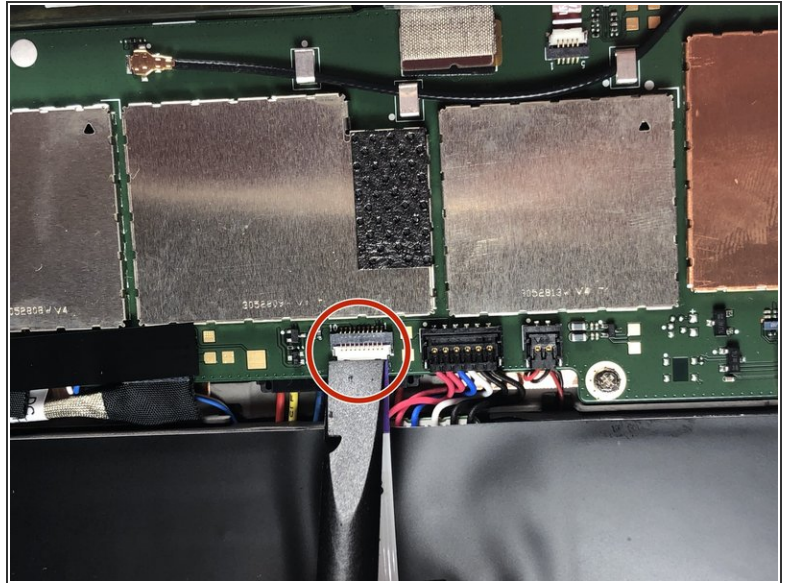
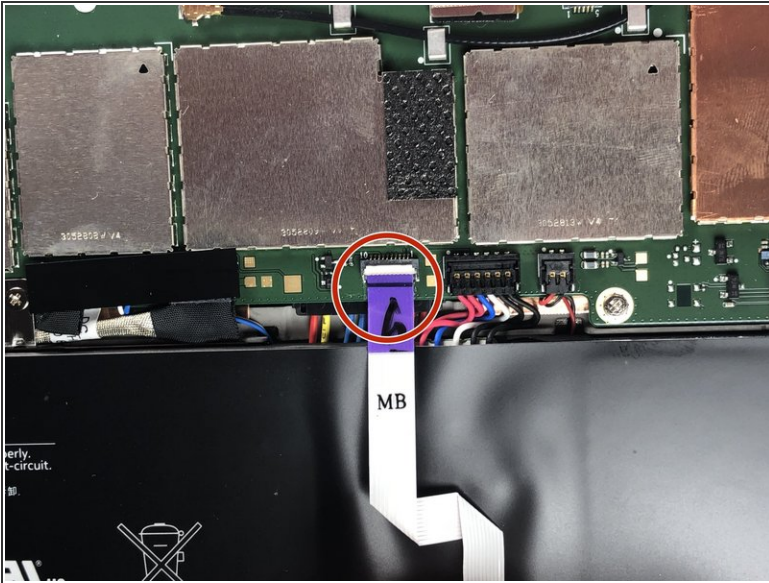
## Step 6 — Battery



- ⚠ Before removing the battery from the device be sure not to puncture the battery. Since the battery is a form of acid.
- ℹ Using a plastic pry tool is better than a metal tool when working with wire and soft case battery case.
- Use a plastic pry tool to remove the battery connector from the logic board.

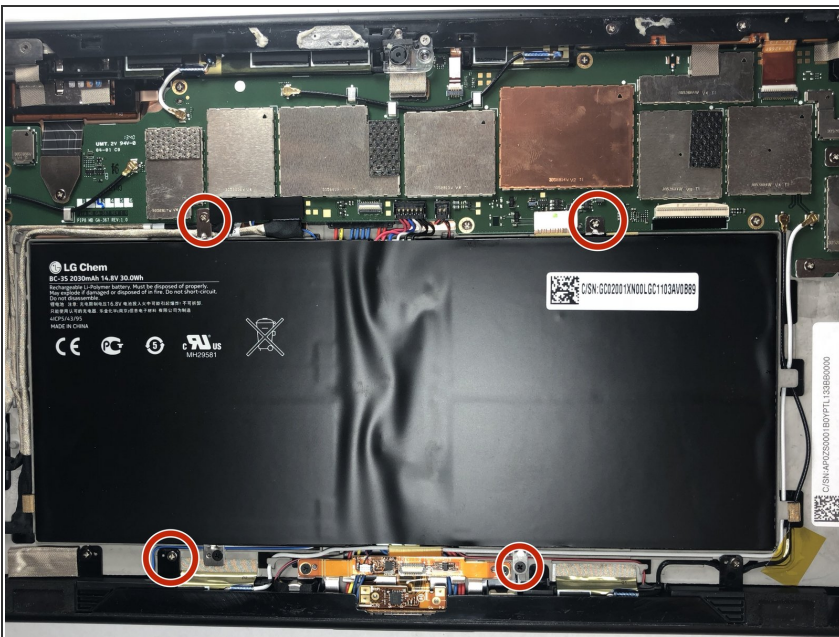


## Step 7



- Remove the ribbon located over the battery.

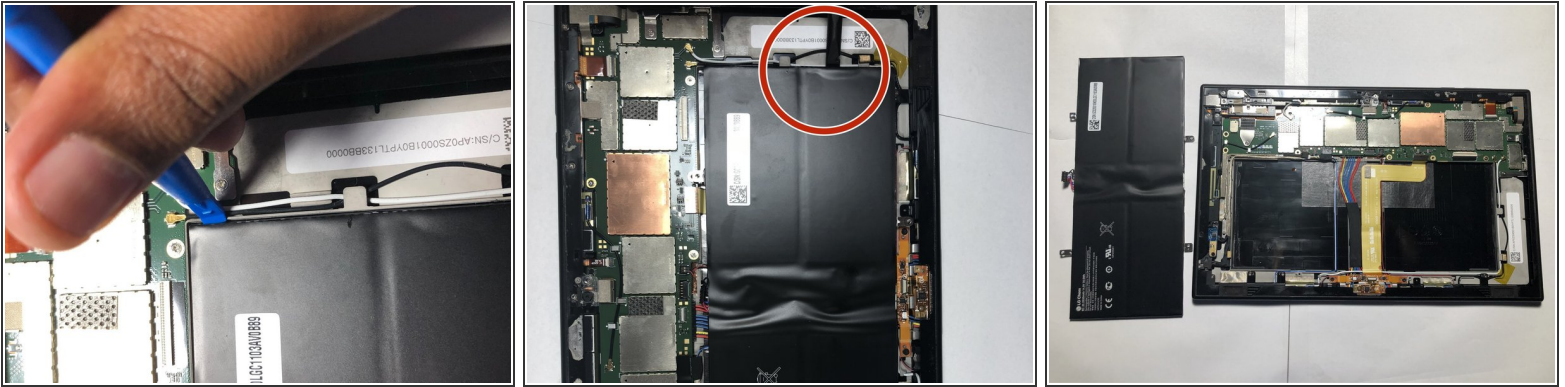
## Step 8



- There are four screws that attach the battery to the chassis. Use a PH0 Phillips head screwdriver to loosen the screw.
- ⚠ Since the tool using is sharp please use with caution, so that you don't puncture the battery.

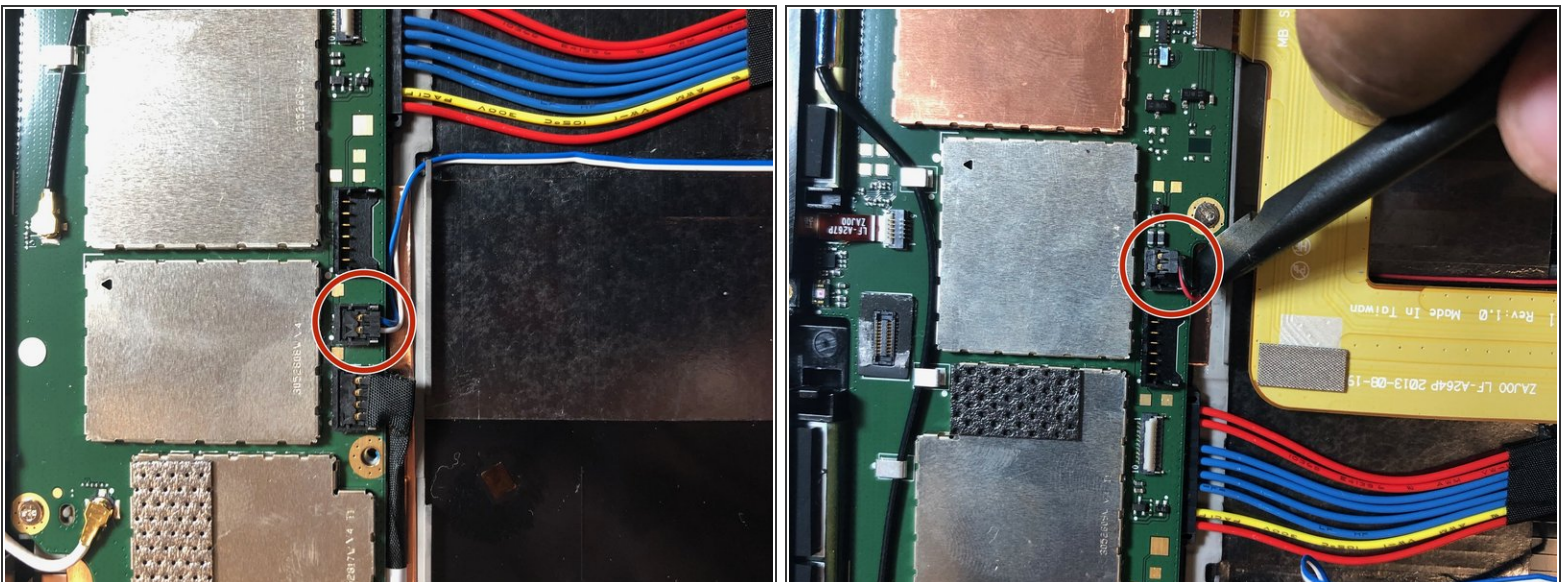


## Step 9



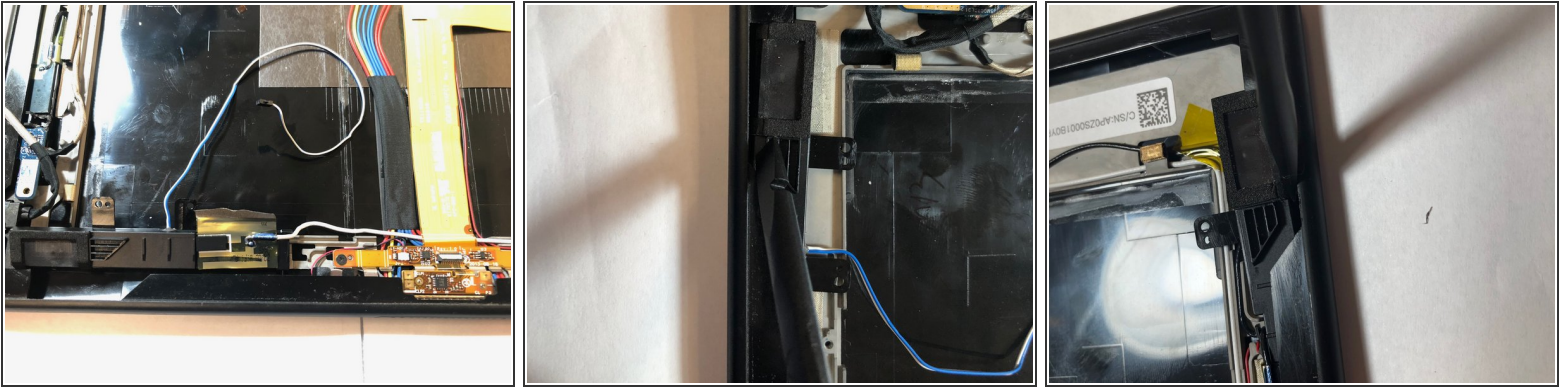
- Take a plastic pry to to pry out the battery from its casing.
- ⓘ The bottom of the battery has adhesive to hold the battery in place. So using enough pressure to pry the battery is ok .
- Using two tool different plastic pry to can help give you leverage on areas that are hard to get up.

## Step 10 — Speaker



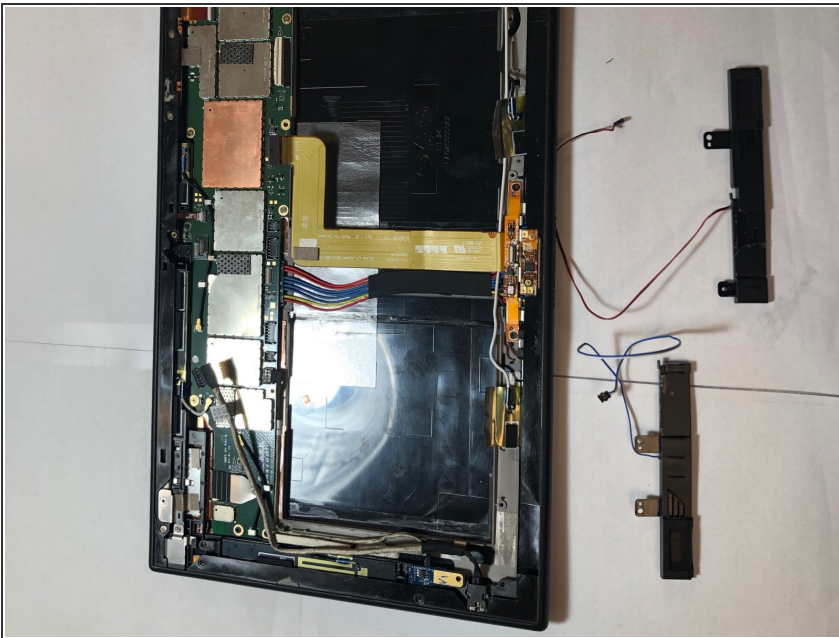
- Disconnect the speaker connection.

## Step 11



- Pry the speaker out of its housing.

## Step 12



- Once done you are complete.

To reassemble your device, follow these instructions in reverse order.