



# HP ProBook 440 G1 Wifi Card Replacement

Written By: Ethan A Courtney



---

# INTRODUCTION

How to remove and replace the Wifi card on an HP ProBook 440 G1.



## TOOLS:

- [Phillips #00 Screwdriver](#) (1)
-

## Step 1 — Battery



⚠ Make sure the laptop is turned off before you start.

- Push and hold the release tab on the right and left toward the center.

## Step 2



- Pull the battery out.

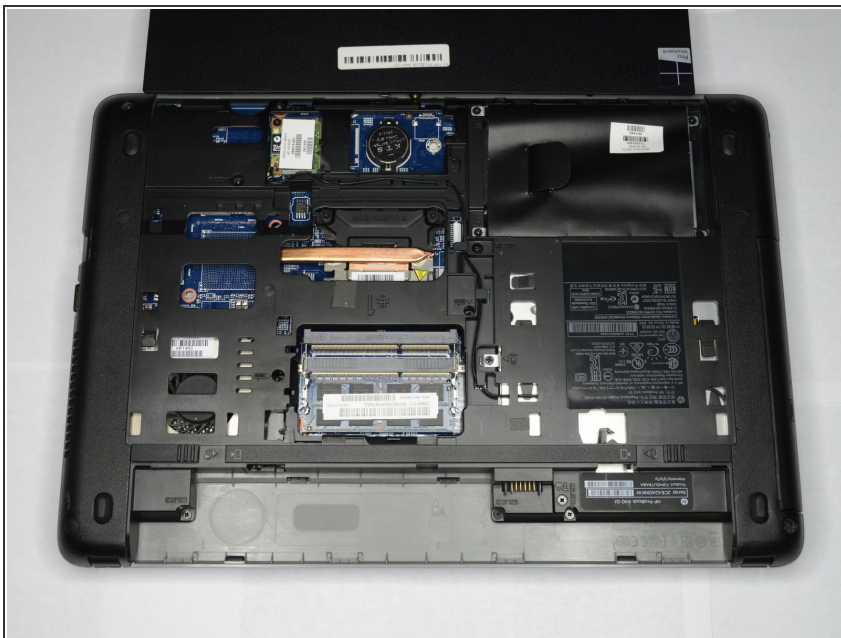


## Step 3 — Backplate



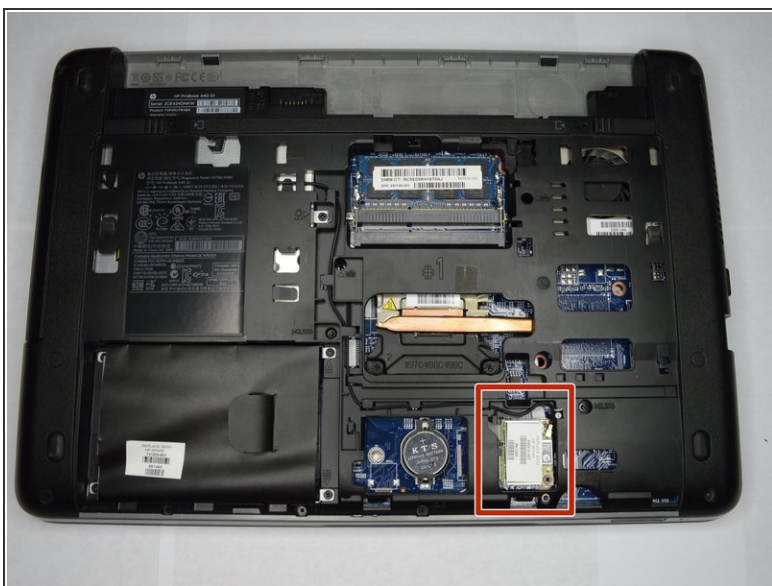
- Push and hold the release tabs on the right and left toward the center again.

## Step 4



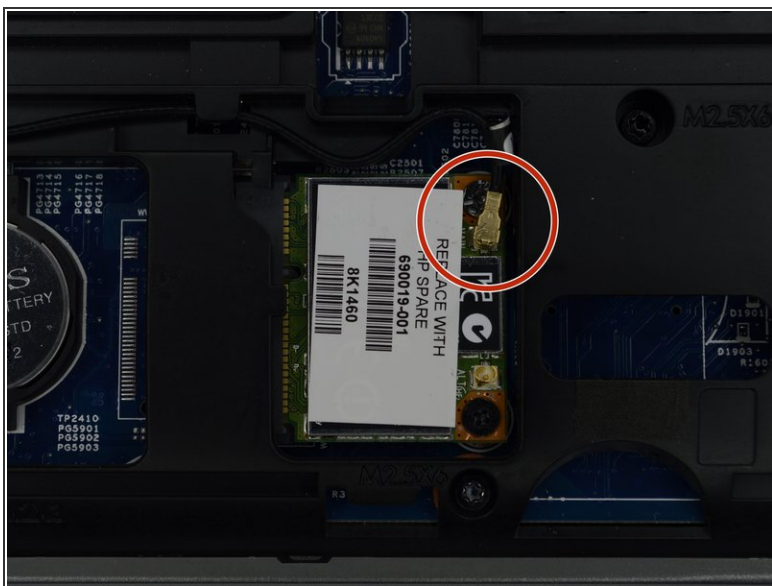
- Slide the backplate off.

## Step 5 — Wifi Card



- Locate the Wifi card, found opposite the battery and across from the hard drive.

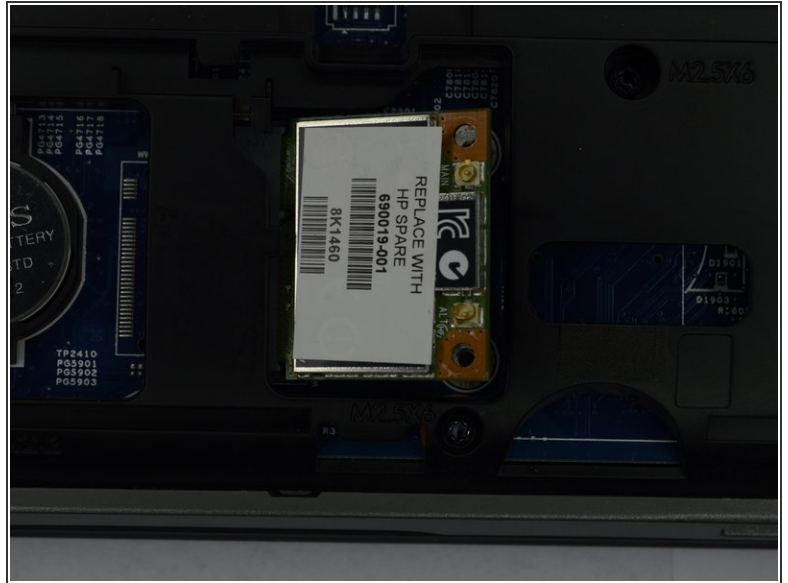
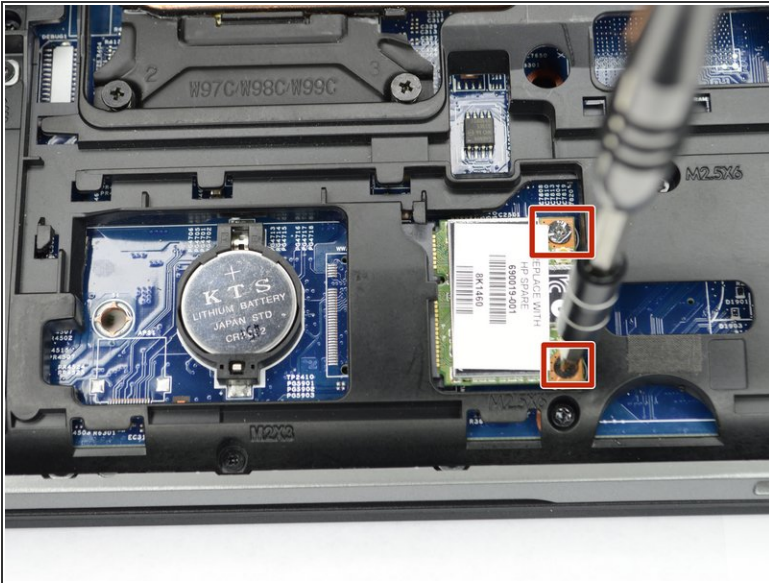
## Step 6



- Remove the wire located near the screws on the wifi card.



## Step 7



- Remove the two Phillips #00 screws holding the wifi card in place.

## Step 8



- Remove the wifi card.

To reassemble your device, follow these instructions in reverse order.