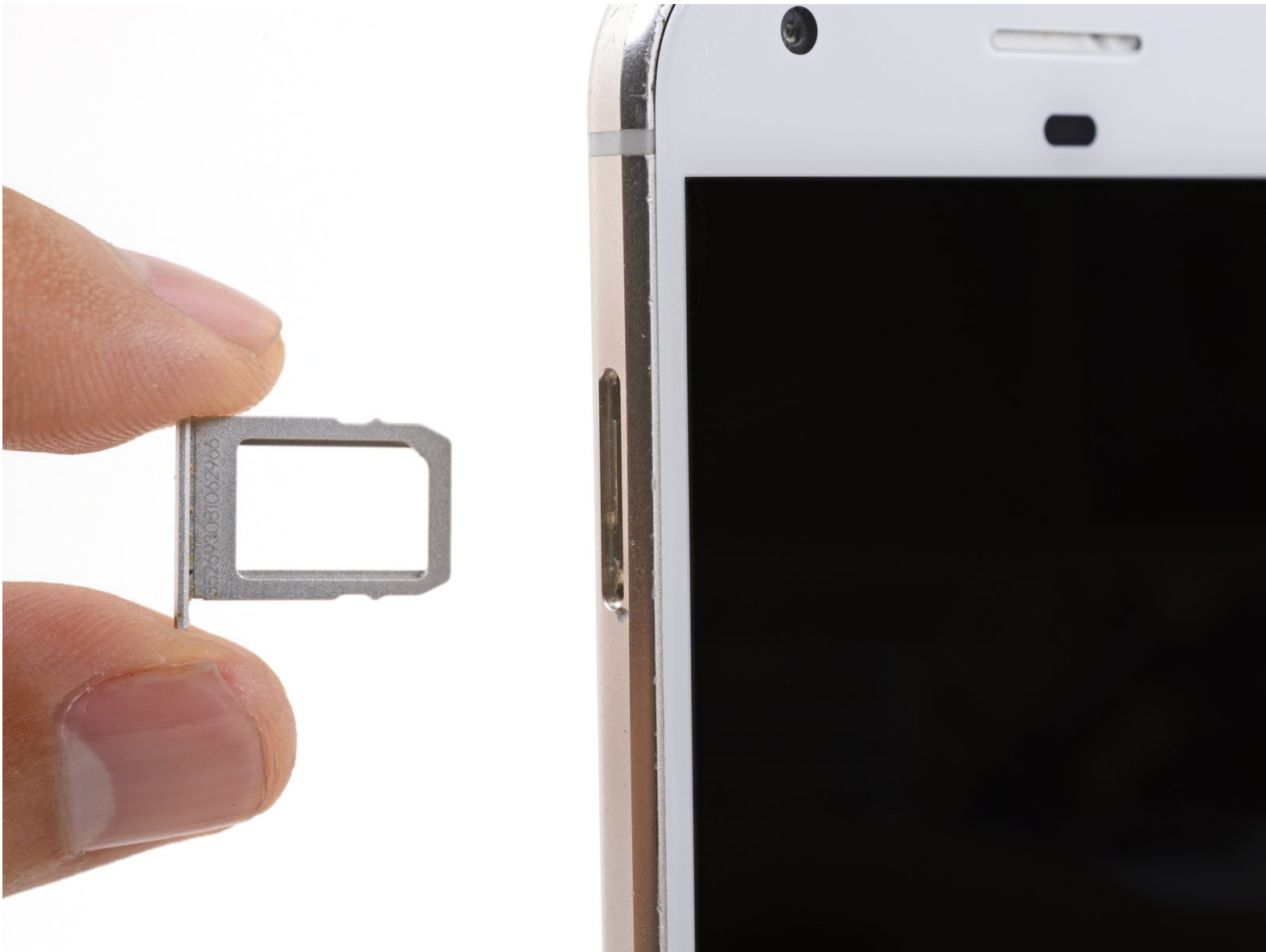




Google Pixel XL SIM Card Tray Replacement

Remove and replace the SIM card tray for the Google Pixel XL.

Written By: Arthur Shi



INTRODUCTION

This repair guide was authored by the iFixit staff and hasn't been endorsed by Google. Learn more about our repair guides [here](#).

Remove and replace the SIM card tray for the Google Pixel XL.



TOOLS:

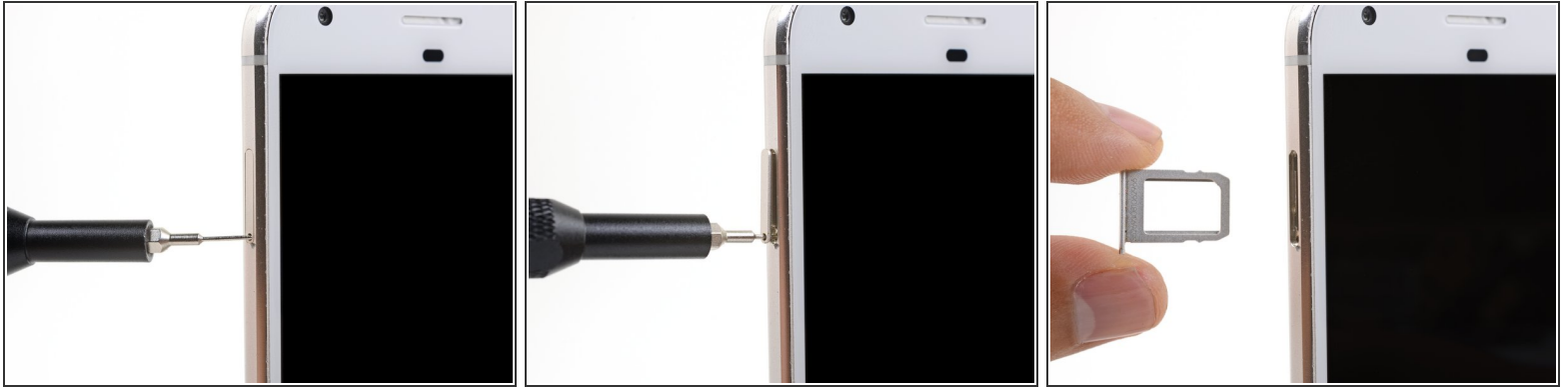
- [SIM Card Eject Tool](#) (1)



PARTS:

- [Google Pixel/Pixel XL SIM Card Tray](#) (1)

Step 1 — SIM Card Tray



- Insert a SIM eject tool, SIM eject bit, or a paperclip into the small hole on the left edge of the phone, near the top.
- Press to eject the tray.

To reassemble your device, follow these instructions in reverse order.