



LG Phoenix 2 Outer Trim Replacement

Replace the outer trim on your LG Phoenix 2 if it is damaged.

Written By: Sarah Popp



INTRODUCTION

If you need to install a new outside trim on your LG Phoenix 2, use this guide to disassemble and replace the damaged outer trim. For this guide you will need a plastic opening tool and a Phillips #000 screwdriver head. These steps will be straightforward and easy to follow, but the pieces should be handled with care, so as to not damage or misplace any needed components.



TOOLS:

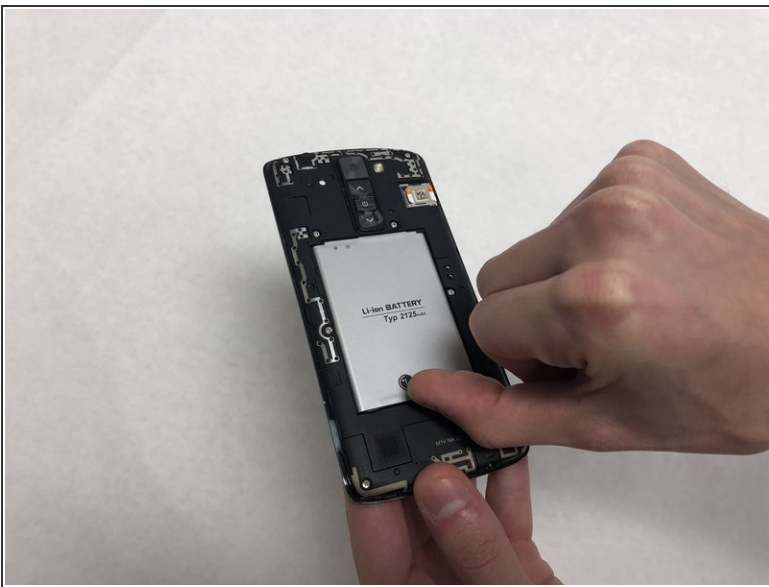
- [iFixit Opening Tools](#) (1)
 - [Phillips #0 Screwdriver](#) (1)
-

Step 1 — Outer Trim Casing



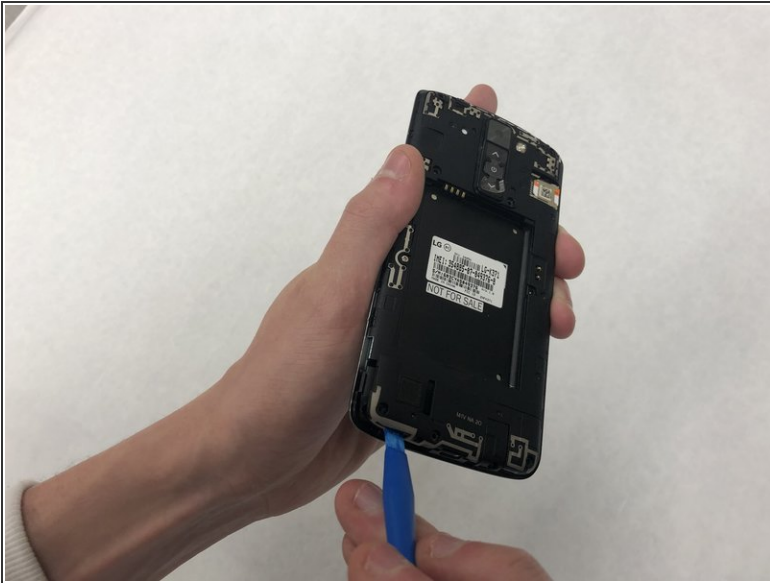
- Insert a fingernail in the notch on the bottom right corner of the phone.
- Pop off the back cover off of your device.

Step 2



- Insert a fingernail in the notch under the battery.
- Remove the battery.

Step 3



- Insert the opening tool under the bottom cover.
- Pop out the bottom cover.

Step 4



- Remove eight 3mm screws using a Phillips #0 screwdriver.

Step 5



- Insert the opening tool in between the silver trim and the screen.
- Pop off the trim.

To reassemble your device, follow these instructions in reverse order.